

## PETNF D2303

# PETNF D2303 Dog House Heater with Thermostat and Wi-Fi Control User Manual

Model: D2303 | Brand: PETNF

## INTRODUCTION

The PETNF D2303 Dog House Heater is designed to provide a warm and comfortable environment for your pets in outdoor shelters such as doghouses, chicken coops, and rabbit cages. This heater features a thermostat, Wi-Fi control via a smart app, and multiple safety mechanisms to ensure reliable and efficient operation.

## SAFETY INFORMATION

- **External Temperature Probe:** The heater utilizes an external temperature probe for accurate temperature measurement, preventing overheating or chilling.
- **Overheat Protection:** Built-in safety features automatically shut off the heater if it detects overheating.
- **Internal Heat Shield:** Safeguards internal components without requiring extra ventilation.
- **Durable Anti-Bite Cord:** Equipped with a 1.97FT metal anti-bite cord to protect against pet damage.
- **Rounded Corners:** Designed with rounded corners for enhanced pet safety.
- **IPX5 Waterproof Controller:** The controller is designed to withstand outdoor conditions.
- **Child Lock:** The controller features a child lock to prevent accidental changes to settings.

## SETUP AND INSTALLATION

Proper installation is crucial for the safe and effective operation of your PETNF D2303 Dog House Heater. Please follow these steps carefully.

### Mounting the Heater

1. **Choose Location:** Select a suitable location inside the pet shelter, ensuring it is at least 2 inches from the bottom and 8 inches from the ceiling for proper ventilation.
2. **Secure Bracket:** Use the provided screws to secure the fall prevention bracket to the wall of the pet shelter.
3. **Mount Heater:** Attach the heater unit to the secured bracket.
4. **Connect Power:** Plug the power cable into a suitable outdoor-rated power outlet.

## Easy to Link APP & Achieve Remote Control

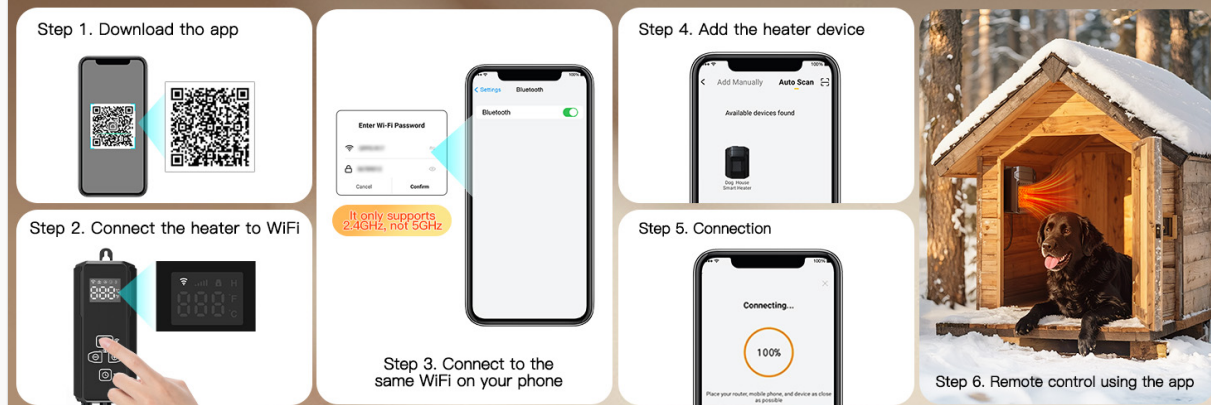


Image: Visual guide for the easy installation process of the heater.

### Controller Installation Options

The controller can be installed in several ways for convenience and accessibility:

- **Direct Attachment:** Use the included 3M stickers to attach the controller directly to the dog house without drilling.
- **Under Eaves:** Hang the controller under the eaves of the doghouse using the provided screws.
- **Near Door:** For rainy or snowy weather, hang the controller near the door for easy operation.

### App Connectivity

1. **Download App:** Scan the QR code or visit [petnf.com/pages/download-ios-android-app-by-petnf-lesotc](https://petnf.com/pages/download-ios-android-app-by-petnf-lesotc) to download the PETNF app.
2. **Connect to Wi-Fi:** Ensure your phone is connected to a 2.4GHz Wi-Fi network.
3. **Pair Device:** Follow the in-app instructions to add and pair your heater device.
4. **Remote Control:** Once connected, you can control the heater remotely via the app.



Image: Step-by-step guide for connecting the heater to the smart app for remote control.

### Installation Video

Video: A detailed guide on how to install the PETNF Dog House Heater, demonstrating the mounting process and setup.

## OPERATING INSTRUCTIONS

The PETNF D2303 heater offers flexible control options to maintain optimal warmth for your pet.

## Temperature Control

- **Adjustable Range:** Set the desired temperature between 41°F and 113°F using the thermostat controls or the smart app.
- **External Probe:** The external temperature probe ensures accurate temperature readings within the pet's environment.

## Timer Functions

- **Heating Duration:** Set heating durations from 0 to 24 hours.
- **Smart Scheduling:** Use the app to schedule daily heating times, similar to setting alarms, to match your pet's needs and weather conditions.

## ECO Mode for Energy Saving

- **Automatic Operation:** In ECO mode, the heater automatically stops when the set temperature is reached and resumes when the temperature drops 2°C/4°F below the set point.
- **Consistent Warmth:** This mode ensures consistent warmth while minimizing energy consumption.

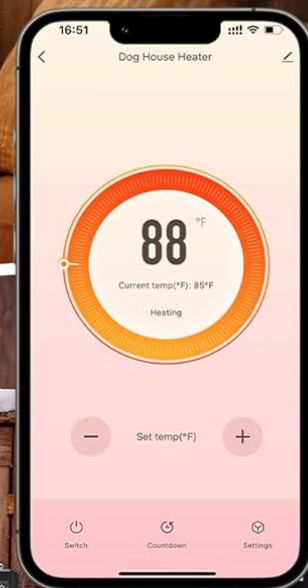


# APP-Controlled Warmth and Safety for Your Dog

Convenient Temp & Timer Control at Your Fingertips



Timer:0-24H



Temperature:41°F-134°F

Image: Overview of app-controlled temperature and timer settings for convenient pet care.

# Warmth, Down to the Minute

Tailor every heating cycle with pinpoint timing

**Personalized Schedule**

16:50 Add Schedule Save

On	Off
06	58
07	59
08	00
09	01
09	02

Time variance is ±30s

08:00  
Every day  
Switch ON

16:49 Add Schedule Save

On	Off
18	58
19	59
20	00
21	01
21	02

Time variance is ±30s

20:00  
Every day  
Switch ON

OFF: 8:00

ON: 20:00

Image: Illustration of personalized heating schedules that can be set for the pet heater.

## MAINTENANCE

Regular maintenance ensures the longevity and optimal performance of your heater.

- **Cleaning:** Periodically wipe the exterior of the heater with a soft, dry cloth. Ensure the unit is unplugged before cleaning.
- **Ventilation:** Keep the air intake and exhaust vents clear of any obstructions to maintain proper airflow.
- **Cord Inspection:** Regularly inspect the power cord and external temperature probe for any signs of damage. Do not use the heater if any part is damaged.

## TROUBLESHOOTING

If you encounter any issues with your PETNF D2303 heater, refer to the following common troubleshooting steps:

- **Heater Not Turning On:**
  - Check if the power cord is securely plugged into a working outlet.
  - Ensure the main power switch on the unit is in the 'ON' position.
  - Verify that the thermostat is set to a temperature higher than the current ambient temperature.
- **No Heat Output:**
  - Confirm the heater is not in ECO mode if immediate heating is desired, or check if the set temperature has already been reached.
  - Inspect the external temperature probe for proper placement and connection.
- **App Connectivity Issues:**
  - Ensure your smartphone is connected to a 2.4GHz Wi-Fi network.
  - Restart the heater and your smartphone, then attempt to re-pair the device through the app.
  - Check for any app updates.
- **Overheating:**
  - If the heater repeatedly shuts off due to overheating, ensure there are no obstructions around the air vents.
  - Verify that the heater is installed with adequate clearance from the bottom and ceiling of the pet shelter.





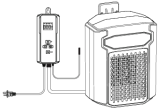
SPECIFICATIONS

Feature	Detail
Brand	PETNF
Model Number	D2303
Power	500W
Special Features	3-Second Rapid Heating, Accurate Temperature Control, ECO Mode & Energy Saving, Overheat Protection, Wi-Fi Enabled
Color	Black
Indoor/Outdoor Usage	Indoor, Outdoor
Product Dimensions	3"D x 4"W x 4.5"H
Recommended Uses	Chicken Coop, Dog House, Greenhouse
Mounting Type	Wall Mount
Heating Coverage	Up to 125-150 Cubic Feet
Fuel Type	Electric



Feature	Detail
Min Temperature Setting	41°F
Max Temperature Setting	113°F
Item Weight	1.5 pounds

## Related Documents - D2303

 <p>Operation Instruction for Tuya App</p>  <p>Download and install APP</p> <p>ver: 1.0.0</p>	<p><a href="#">PETNF Tuya App Operation Manual: Setup, Connection, and Usage Guide</a></p> <p>Comprehensive guide to operating PETNF smart devices using the Tuya App. Covers sign-up, login, network connection (automatic and manual), device sharing, renaming, and troubleshooting.</p>
	<p><a href="#">PETNF Dog House Heater User Manual - Model PF2021006</a></p> <p>Comprehensive user manual for the PETNF Dog House Heater (Model PF2021006), covering setup, operation, safety warnings, product specifications, installation, and app control via Amazon Alexa and Google Assistant.</p>
 <p>PETNF PET WATER FOUNTAIN INSTRUCTION MANUAL</p> <p>support@petnf.com</p>	<p><a href="#">PETNF Pet Water Fountain Instruction Manual   Setup, Cleaning &amp; Features</a></p> <p>Comprehensive instruction manual for the PETNF Pet Water Fountain. Learn about setup, usage, cleaning, troubleshooting, and features like dual flow modes and ultra-quiet pump.</p>
<p>User Manual DOG HOUSE HEATER</p>  <p>©2023 LesoRocity Inc. All rights reserved. This document is for reference only. The actual product may vary from the image. The information in this document is subject to change without notice.</p>	<p><a href="#">Dog House Heater User Manual - Model D2303</a></p> <p>Comprehensive user manual for the LesoRocity D2303 Dog House Heater. Includes installation instructions, features, operation guide, safety warnings, and FCC compliance information.</p>