

VILTROX AF 35mm f/1.2 LAB Z

VILTROX AF 35mm f/1.2 LAB Z Lens for Nikon Z-Mount User Manual

Model: AF 35mm f/1.2 LAB Z

Brand: VILTROX

1. INTRODUCTION AND OVERVIEW

The VILTROX AF 35mm f/1.2 LAB Z is a high-performance, full-frame autofocus lens designed for Nikon Z-Mount cameras. It features an ultra-large f/1.2 aperture, providing exceptional depth of field control, beautiful bokeh, and superior low-light performance. This lens is engineered with advanced optical elements and a rapid autofocus system to deliver outstanding image quality and reliable operation.



Figure 1.1: Front view of the VILTROX AF 35mm f/1.2 LAB Z Lens.

Key Features:

- **Ultra-Large f/1.2 Aperture:** Achieve stunning depth of field with beautiful bokeh and excellent low-light performance. Even wide open, expect exceptional image quality and clarity.
- **Advanced Optical Construction:** Built with 15 elements across 10 groups, including 5 ultra-low dispersion elements, 3 high-refractive index elements, and 2 large-diameter aspherical elements for enhanced optical performance.
- **Rapid Autofocus Speed:** Equipped with a HyperVCM motor, this lens offers a 150% improvement in focusing speed compared to traditional STM motors, providing swift and smooth focus transitions for both photography and videography.
- **Excellent Control:** Features an LCD screen, 2 customizable focus hold buttons, a focus range limiter, and a customizable aperture ring with click stops.
- **Exceptional Close-Up Quality:** With a minimum focusing distance of 0.34m and a magnification ratio of 0.17x, this lens delivers outstanding image quality even in close-up photography.
- **Durable and Lightweight Construction:** Crafted from a magnesium-aluminum alloy, the lens body is both lightweight and robust, offering high impact resistance and advanced dust and splash protection for reliable performance in various environments.

2. WHAT'S IN THE BOX

Upon opening the package, please verify that all the following items are included:

- VILTROX AF 35mm f/1.2 LAB Z Lens
- Front Lens Cap
- Rear Lens Cap
- Lens Pouch
- Lens Hood
- User Manual (this document)
- Warranty Card



Figure 2.1: The VILTROX AF 35mm f/1.2 LAB Z lens and its included accessories.

Video 2.1: An unboxing demonstration of the VILTROX AF 35mm f/1.2 LAB Z lens, showing the contents of the package.

3. SETUP AND INSTALLATION

Attaching the Lens to Your Camera:

1. Ensure your camera is powered off before attaching or detaching the lens.
2. Remove the rear lens cap from the VILTROX AF 35mm f/1.2 LAB Z lens and the body cap from your Nikon Z-Mount camera.
3. Align the red dot on the lens barrel with the red dot on your camera's lens mount.
4. Insert the lens into the camera's mount and rotate it clockwise until it clicks into place. Do not force the lens.
5. Once securely attached, you can power on your camera.

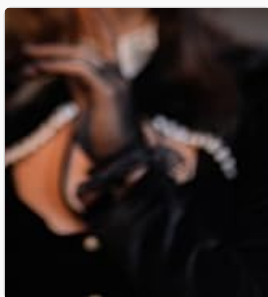


Figure 3.1: The robust metal lens mount of the VILTROX AF 35mm f/1.2 LAB Z lens.



Figure 3.2: Rear view of the lens, highlighting the Nikon Z-Mount interface.

Detaching the Lens:

1. Power off your camera.
2. While pressing the lens release button on your camera body, rotate the lens counter-clockwise until it detaches.
3. Immediately attach the front and rear lens caps to protect the lens elements and mount.

Attaching the Lens Hood:

Align the lens hood with the front of the lens and rotate it clockwise until it locks into place. The lens hood helps to prevent flare and protects the front element from minor impacts.



Figure 3.3: The VILTROX AF 35mm f/1.2 LAB Z lens properly mounted on a Nikon Z-Mount camera with the lens hood attached.

4. OPERATING THE LENS

Autofocus (AF) / Manual Focus (MF) Switch:

Located on the side of the lens, this switch allows you to select between autofocus and manual focus modes. Ensure your camera's focus mode is also set accordingly.



Figure 4.1: The AF/MF switch and customizable Fn buttons for quick control.

Customizable Fn Buttons:

The lens features two customizable Fn (Function) buttons. These buttons can be assigned various functions through your camera's menu, such as AF-ON, depth-of-field preview, or other frequently used settings.

Aperture Ring:

The lens includes a dedicated aperture ring with click stops, allowing for tactile and precise aperture control. This can be customized via the camera settings.

LCD Screen:

An integrated LCD screen displays key information such as focus distance and aperture settings, providing quick visual confirmation of your current parameters.



Figure 4.2: The lens mounted on a camera, showcasing the LCD screen with displayed information.

Video 4.1: A demonstration of mounting and operating the VILTROX AF 35mm f/1.2 LAB Z lens on a Nikon Z-Mount camera.

Video 4.2: This video highlights the fast focusing capabilities of the VILTROX AF 35mm f/1.2 LAB Z lens.

Video 4.3: Sample images and a starry sky timelapse captured with the VILTROX AF 35mm f/1.2 LAB Z lens, demonstrating its optical performance.

5. MAINTENANCE AND CARE

Proper maintenance ensures the longevity and optimal performance of your lens.

- **Cleaning the Lens:** Use a soft, lint-free cloth or a lens brush to remove dust from the lens surfaces. For smudges or fingerprints, use a specialized lens cleaning solution and a microfiber cloth. Avoid touching the glass elements directly with your fingers.
- **Storage:** When not in use, always attach both front and rear lens caps. Store the lens in its pouch in a cool, dry place away from direct sunlight and extreme temperatures. Avoid areas with high humidity to prevent mold growth.
- **Handling:** Handle the lens with care. Avoid dropping it or subjecting it to strong impacts. The magnesium-aluminum alloy construction provides durability, but excessive force can still cause damage.
- **Dust and Splash Protection:** While the lens offers advanced dust and splash protection, it is not fully waterproof. Avoid exposing it to heavy rain or submerging it in water.

6. TROUBLESHOOTING

If you encounter issues with your VILTROX AF 35mm f/1.2 LAB Z lens, please refer to the following common troubleshooting steps:

- **Lens Not Attaching Securely:** Ensure the red dots on the lens and camera body are aligned correctly and that the lens is rotated clockwise until it clicks. Check for any obstructions on the mount.
- **Autofocus Not Working:** Verify that the AF/MF switch on the lens is set to AF. Check your camera's focus mode settings to ensure autofocus is enabled. Clean the electrical contacts on both the lens and camera body with a clean, dry cloth.
- **Image Quality Issues (e.g., blurry images):** Ensure the lens elements are clean and free from smudges. Check that the lens is securely mounted. If using manual focus, ensure accurate focusing. For autofocus, ensure sufficient light and contrast for the camera's AF system.
- **LCD Screen Not Displaying Information:** Power cycle the camera. Ensure the lens is properly mounted and communicating with the camera body.
- **Lens Not Recognized by Camera:** Power off the camera, detach and reattach the lens, then power on. Ensure your camera's firmware is up to date.

If these steps do not resolve the issue, please contact VILTROX customer support for further assistance.

7. SPECIFICATIONS

Detailed technical specifications for the VILTROX AF 35mm f/1.2 LAB Z Lens:

Feature	Detail
---------	--------

Feature	Detail
Product Dimensions	4.8 x 3.5 x 3.5 inches
Item Weight	2.14 pounds
ASIN	B0G2RJZP6H
Date First Available	November 18, 2025
Manufacturer	Shenzhen Jueying Technology Co., Ltd.
Brand	VILTROX
Focal Length Description	35mm Fixed Focal Length
Lens Type	Wide Angle
Compatible Mountings	Nikon Z
Camera Lens Description	Viltrox 35mm F1.2 Autofocus Large Aperture Lens For Nikon Z-mount Cameras



Figure 7.1: Optical construction diagram of the lens, showing 15 elements in 10 groups.

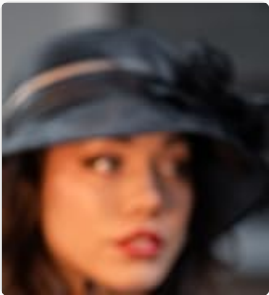


Figure 7.2: MTF (Modulation Transfer Function) chart illustrating the lens's resolution and contrast performance at different apertures.

8. WARRANTY AND SUPPORT

Your VILTROX AF 35mm f/1.2 LAB Z lens comes with a manufacturer's warranty. Please refer to the included warranty card for specific terms and conditions, including the warranty period and coverage details.

For technical support, service, or any inquiries regarding your product, please visit the official VILTROX website or contact their customer service department. Keep your purchase receipt and warranty card handy when seeking support.

Official VILTROX Store: [VILTROX Official Store on Amazon](#)

