



[Manuals.plus](#) /

> [DUMOS](#) /

> DUMOS L-Shaped Desk 50-Inch (Grey) Instruction Manual

## DUMOS DUVMHJ3-FH-LXZ02JB-49WGY

# DUMOS L-Shaped Desk 50-Inch (Grey) Instruction Manual

Model: DUVMHJ3-FH-LXZ02JB-49WGY

## INTRODUCTION

---

Thank you for choosing the DUMOS L-Shaped Desk. This manual provides essential information for the safe and efficient assembly, operation, and maintenance of your new desk. Please read these instructions carefully before beginning assembly and retain them for future reference.

## SAFETY INFORMATION

---

- Always follow the assembly instructions carefully to ensure the desk is stable and secure.
- Tighten all bolts and screws as instructed to prevent wobbling or tipping.
- Do not overload the desk. The maximum weight recommendation is 264 pounds (120 kg).
- Keep small parts and packaging materials away from children to prevent choking hazards.
- Ensure the desk is placed on a level surface to maintain stability.

## PACKAGE CONTENTS

---

Before assembly, verify that all components are present and undamaged. Refer to the parts list provided in your packaging. If any parts are missing or damaged, please contact customer support.

# Product Dimension



Image: Product dimensions and components overview.

## SETUP AND ASSEMBLY

Assembly of the DUMOS L-Shaped Desk is designed to be straightforward and tool-free, with all necessary tools included. We recommend two people for assembly to ensure ease and safety.

### Assembly Steps:

1. Unpack all components and lay them out on a clean, soft surface to prevent scratches.
2. Identify all numbered parts according to the included parts list.
3. Assemble the metal frames using the provided screws and Allen wrench. Ensure all connections are secure.
4. Attach the X-brace structures to the metal frames for enhanced stability.
5. Place the desktop panels onto the assembled frames. Align the pre-drilled holes and secure them with the provided fasteners.
6. Install the CPU stand. This stand is reversible and can be mounted on either the left or right side of the desk to suit your setup.

7. Once fully assembled, gently lift and place the desk in its desired location. Double-check all connections for tightness.

Your browser does not support the video tag.

*Video: Detailed assembly guide for the DUMOS L-Shaped Desk. This video demonstrates step-by-step instructions for putting together the desk components, including frame assembly, tabletop attachment, and CPU stand installation.*



*Image: Reversible CPU stand for flexible setup.*

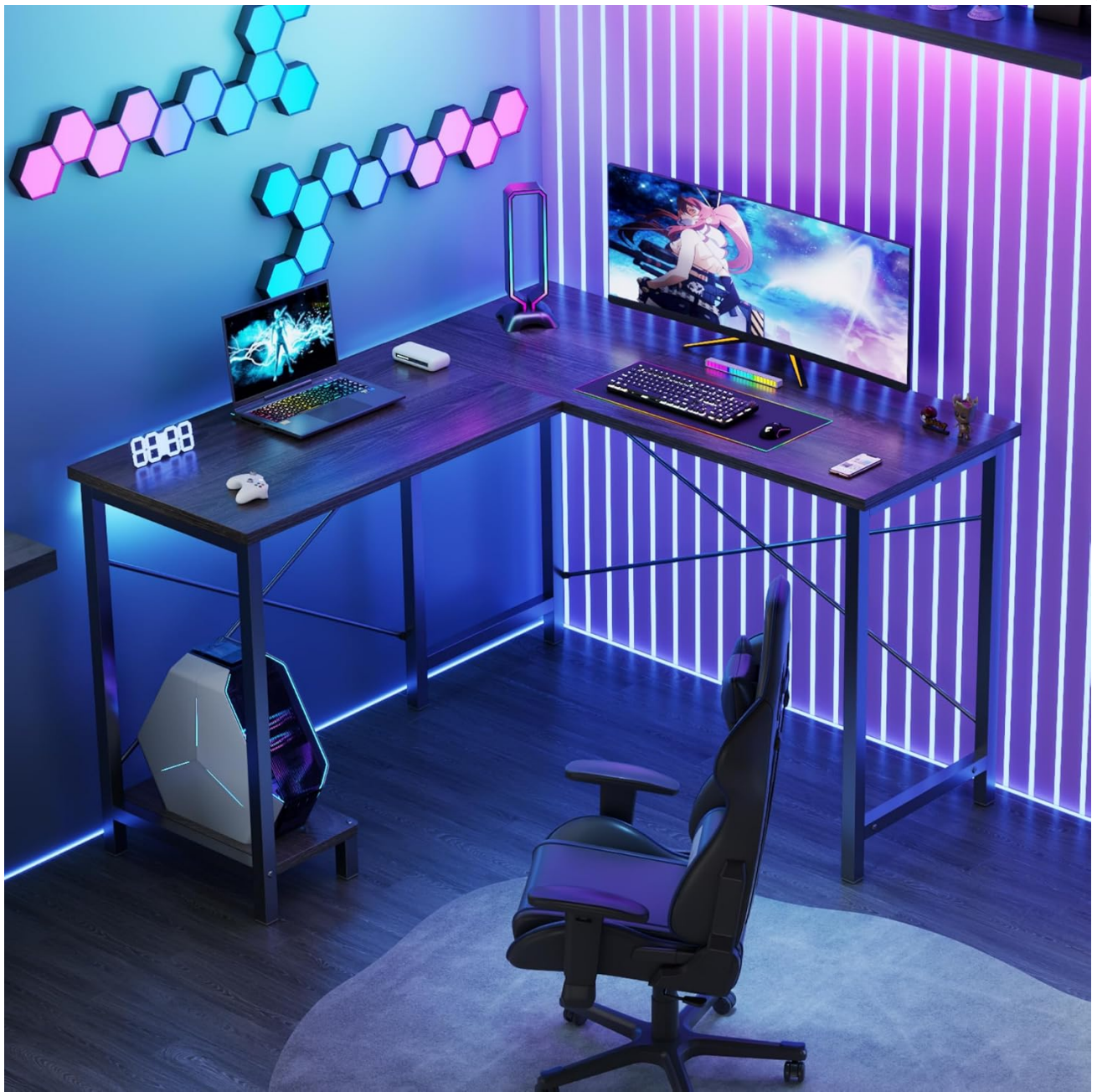
## OPERATING INSTRUCTIONS

The DUMOS L-Shaped Desk is designed for versatile use in various environments, including gaming setups, home offices, and study areas. Its L-shape maximizes corner space, providing ample surface area for multiple monitors, peripherals, and work materials.

### Key Features for Use:

- **Spacious Work Surface:** Utilize the expansive L-shaped desktop to organize your computer, monitors, and other equipment efficiently.
- **CPU Stand:** Place your computer tower on the dedicated CPU stand to keep it off the floor, protecting it from dust and improving airflow. The stand can be positioned on either side of the desk.

- **Cable Management:** The open design and CPU stand assist in managing cables, contributing to a tidy and organized workspace.
- **Ergonomic Legroom:** The desk's structure provides generous legroom, allowing for comfortable seating during extended periods of use.



*Image: Desk configured as a gaming command center.*

# From Chaos to Clarity



*Image: Effective cable management for a clean workspace.*

## MAINTENANCE

Proper maintenance will extend the lifespan and preserve the appearance of your DUMOS L-Shaped Desk.

- **Cleaning:** Wipe the desk surface with a damp cloth. Avoid harsh chemicals or abrasive cleaners that may damage the laminated finish.
- **Spill Resistance:** The waterproof tabletop resists damage from spills. Promptly wipe up any liquids to prevent potential staining or damage over time.
- **Tighten Fasteners:** Periodically check and tighten all bolts and screws to ensure the desk remains stable and secure.
- **Avoid Excessive Weight:** Do not exceed the maximum weight recommendation of 264 pounds (120 kg) to prevent structural damage.



Image: Desk surface demonstrating waterproof and easy-to-clean features.

## TROUBLESHOOTING

If you encounter any issues with your DUMOS L-Shaped Desk, refer to the following common problems and solutions:

Problem	Possible Cause	Solution
Desk is wobbly or unstable.	Loose fasteners or uneven placement.	Ensure all screws and bolts are securely tightened. Adjust the desk's position on a level surface.
Parts do not align during assembly.	Incorrect orientation of components.	Review the assembly instructions carefully, paying close attention to part numbers and orientation. Disassemble and re-align if necessary.
Missing components.	Packaging error.	Check all packaging materials thoroughly. If parts are still missing, contact DUMOS customer support with your model number and purchase details.

## SPECIFICATIONS

<b>Brand</b>	DUMOS
<b>Model Number</b>	DUYMHJ3-FH-LXZ02JB-49WGY
<b>UPC</b>	751074086468
<b>Shape</b>	L-Shape
<b>Product Dimensions (D x W x H)</b>	43.3"D x 50"W x 29.52"H (110cm D x 127cm W x 75cm H)
<b>Color</b>	Grey
<b>Style</b>	Modern
<b>Base Material</b>	Metal
<b>Top Material Type</b>	Laminated Wood
<b>Item Weight</b>	28.22 Pounds (12.8 kg)
<b>Maximum Weight Recommendation</b>	264 Pounds (120 kg)

<b>Number Of Shelves</b>	1 (CPU Stand)
<b>Required Assembly</b>	Yes
<b>Recommended Number of People for Assembly</b>	2
<b>Includes All Assembly Tools</b>	Yes
<b>Product Care Instructions</b>	Wipe with Damp Cloth
<b>Special Features</b>	Compact, Ergonomic, Lightweight, Monitor Stand (implied by design), Reversible CPU Stand

## WARRANTY INFORMATION

---

Specific warranty details for the DUMOS L-Shaped Desk are typically provided at the point of purchase or within the product packaging. Please refer to your purchase receipt or contact the retailer/manufacturer directly for comprehensive warranty terms and conditions.

## CUSTOMER SUPPORT

---

For further assistance, missing parts, or any questions regarding your DUMOS L-Shaped Desk, please contact the retailer from whom you purchased the product. Have your model number (DUYMHJ3-FH-LXZ02JB-49WGY) and proof of purchase ready.