

## MAXLANDER ML-DCS16

# MAXLANDER ML-DCS16 4.2 Gallon Battery Powered Backpack Sprayer Instruction Manual

Model: ML-DCS16

## 1. INTRODUCTION

---

Thank you for choosing the MAXLANDER ML-DCS16 4.2 Gallon Battery Powered Backpack Sprayer. This electric sprayer is designed for efficient and comfortable application of various liquids for lawn and garden care, cleaning, and other tasks. It features a powerful motor, adjustable pressure, and a comfortable backpack design for extended use.

## 2. SAFETY INFORMATION

---

Read all instructions carefully before operating the sprayer. Failure to follow these instructions may result in electric shock, fire, and/or serious injury.

- Always wear appropriate personal protective equipment (PPE) such as gloves, eye protection, and a mask when operating the sprayer, especially when handling chemicals.
- Do not spray flammable liquids, strong acids, or highly corrosive substances.
- Ensure the battery is fully charged before use and stored in a dry, cool place.
- Keep children and pets away from the spraying area.
- Never point the spray wand at people or animals.
- Disconnect the battery before performing any maintenance or cleaning.
- Do not immerse the sprayer or battery in water.

## 3. PACKAGE CONTENTS

---

Verify that all items are present in your package. If any parts are missing or damaged, contact MAXLANDER customer support.

- 4.2 Gallon Sprayer Tank (16L)

- Pressure Handle
- Telescopic Stainless Steel Spray Wand (up to 39.3 inches)
- High Pressure Hose
- 6 Spray Nozzles (Windproof, F-Type Double, Adjustable Four-Hole, Three-Head, Fan-Shaped, Two Head Long Copper)
- 2 x 20V 2.0Ah Batteries
- Battery Charger
- Waist Support
- Wide Cushioned Shoulder Straps
- Soft Back Padding
- Sealing Gaskets
- Lance Clamp
- Measuring Cup

## Widely Applied Scenarios



**Figure 3.1:** A comprehensive diagram labeling each part of the sprayer package, including the tank, wand, nozzles, batteries, charger, and comfort accessories.

## 4. SETUP

### 4.1 Attaching Straps and Waist Support

1. Attach the wide cushioned shoulder straps to the designated loops on the top and bottom of the sprayer tank.
2. Secure the soft back padding to the back of the tank.
3. Connect the waist support for added comfort and stability during use.



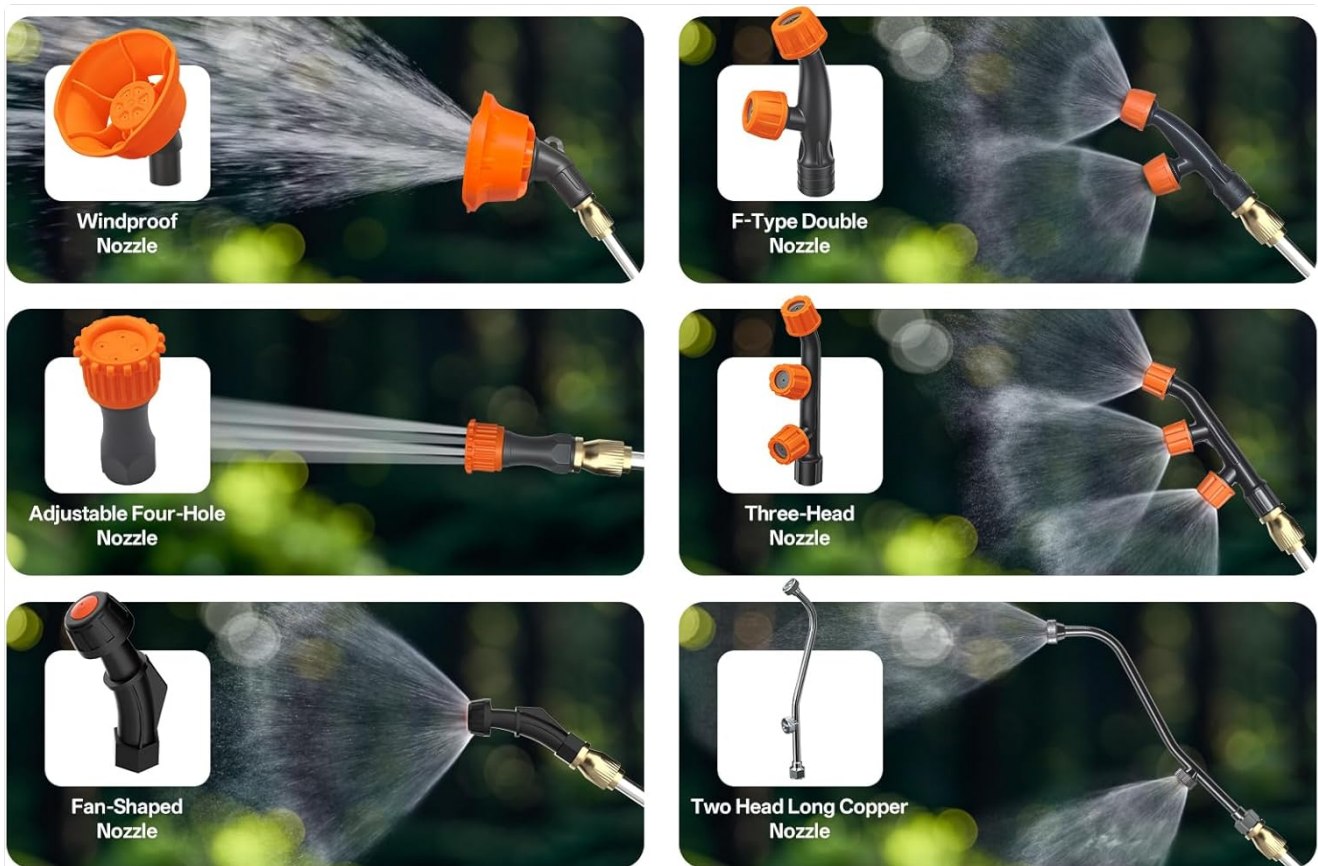
**Figure 4.1:** A view of the sprayer's back panel, showcasing the breathable shoulder straps, supporting backrest, and engineering support belt designed for user comfort.

### 4.2 Charging and Installing Batteries

1. Before first use, fully charge both 20V 2.0Ah batteries using the provided charger. The charger indicator light will change when charging is complete.
2. Insert a charged battery into the battery compartment on the side of the sprayer until it clicks into place.

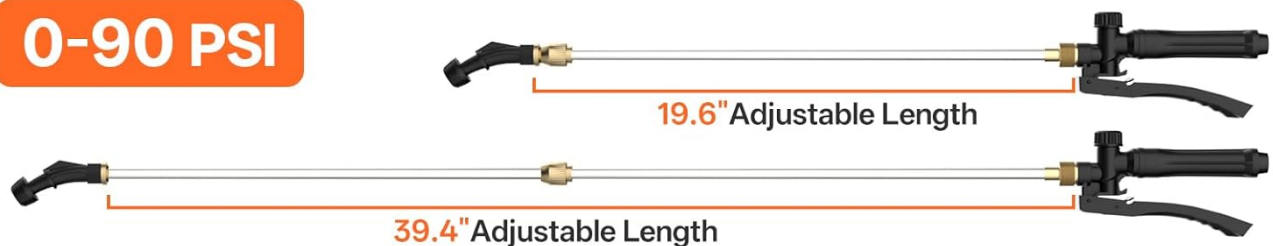
### 4.3 Assembling the Spray Wand and Nozzle

1. Connect the high-pressure hose to the sprayer tank outlet and the pressure handle. Ensure connections are tight to prevent leaks.
2. Attach the telescopic stainless steel wand to the pressure handle.
3. Select the desired nozzle from the 6 included options and securely screw it onto the end of the spray wand.



## 6 NOZZLES FOR ALL YOUR SPRAYING NEEDS

**0-90 PSI**



**Figure 4.2:** This image displays the six distinct nozzles included with the sprayer, each designed for different spray patterns and applications, from fine mist to powerful jet.

### 4.4 Filling the Tank

1. Ensure the sprayer is on a level surface.
2. Unscrew the tank lid and remove the filter screen.
3. Carefully pour the desired liquid into the tank, observing the clear gallon-marked tank for accurate measurement. Do not overfill beyond the 4.2-gallon capacity.
4. Replace the filter screen and securely tighten the tank lid.



Figure 4.3: Close-up views of the sprayer's design, including the wide fill opening with filter, clear tank with water level markings, and the digital voltage display.

## 5. OPERATING INSTRUCTIONS

### 5.1 Powering On and Spraying

1. Once the tank is filled and the battery is installed, put on the backpack sprayer, adjusting the straps and waist support for a comfortable fit.
2. Locate the power switch (usually near the battery compartment) and turn the sprayer ON.
3. Point the nozzle towards the target area and press the trigger on the pressure handle to begin spraying.
4. For continuous spraying, engage the lock button on the pressure handle. Release the lock to stop spraying.



Figure 5.1: A user demonstrates the Maxlander backpack sprayer, applying liquid to garden plants. The sprayer is worn comfortably on the back.

## 5.2 Adjusting Pressure and Spray Pattern

1. The sprayer features an adjustable knob to control the pressure, allowing for a range up to 90 PSI. Turn the knob clockwise for higher pressure and a more powerful jet, and counter-clockwise for lower pressure and a gentler mist.
2. Change nozzles as needed to achieve different spray patterns for various applications (e.g., wide coverage, targeted stream).

# ADJUSTABLE SPRAY INTENSITY



Figure 5.2: Illustrates the sprayer's ability to adjust spray intensity from a gentle mist for delicate plants to a powerful stream for broader coverage.

## 5.3 Monitoring Battery Life

The sprayer is equipped with a digital display to show the battery's condition. Monitor this display to ensure sufficient power for your task. The auto-shutoff protection feature helps prevent battery damage from over-discharge.

## 6. MAINTENANCE

---

### 6.1 Cleaning the Sprayer

1. After each use, especially when spraying chemicals, thoroughly rinse the tank with clean water.
2. Spray clean water through the wand and nozzles to flush out any residue.
3. Remove and clean the filter screen regularly to prevent clogging.
4. Wipe down the exterior of the sprayer with a damp cloth. Do not use abrasive cleaners.

## 6.2 Battery Care and Storage

- Always remove the battery from the sprayer when not in use or during cleaning.
- Store batteries in a cool, dry place, away from direct sunlight and extreme temperatures.
- Charge batteries fully before long-term storage and recharge every 3-6 months to maintain battery health.

## 6.3 Checking for Leaks

Periodically inspect all connections (hose to tank, hose to handle, wand to handle, nozzle to wand) for tightness. Replace any worn sealing gaskets to prevent leaks.

## 7. TROUBLESHOOTING

Problem	Possible Cause	Solution
Sprayer does not turn on	Battery not installed correctly; Battery discharged; Power switch off	Ensure battery is fully inserted; Charge battery; Turn power switch ON
No spray or weak spray	Tank empty; Nozzle clogged; Low battery; Pressure knob set too low	Refill tank; Clean nozzle; Charge battery; Adjust pressure knob
Liquid leaking from connections	Connections loose; Worn sealing gaskets	Tighten all connections; Inspect and replace sealing gaskets if necessary
Sprayer runs but no liquid comes out	Hose kinked; Filter clogged; Air in system	Straighten hose; Clean filter; Prime pump by spraying water until consistent flow

## 8. SPECIFICATIONS

Feature	Specification
Model Number	ML-DCS16
Tank Volume	4.2 Gallons (16 Liters)
Maximum Pressure	90 PSI
Power Source	Battery Powered
Battery Type	2 x 20V 2.0Ah Lithium-Ion
Runtime	Up to 2 hours (approx. 19 full tanks per charge)
Wand Length	Telescopic, up to 39.3 inches
Number of Nozzles	6
Product Dimensions	38.2 x 20.5 x 48.3 cm
Item Weight	3.6 Kilograms
Material	Plastic, Rubber, Silicone, Stainless Steel

## 9. WARRANTY AND SUPPORT

---

MAXLANDER products are designed for reliability and performance. For warranty information, please refer to the documentation included with your purchase or contact MAXLANDER customer support directly. The manufacturer's warranty status is indicated as 'no\_warning\_applicable' in product specifications, suggesting that warranty details should be obtained from the manufacturer at the time of purchase or through their official channels.

For technical assistance, troubleshooting, or to inquire about replacement parts, please contact MAXLANDER customer service. Manufacturer contact information: Maxlander.