

[Manuals.plus](#) /

› [LVSOMT](#) /

› LVSOMT 33-inch Sideboard Buffet Cabinet Instruction Manual

## LVSOMT B0G2KS8LS2

# LVSOMT 33-inch Sideboard Buffet Cabinet Instruction Manual

Model: B0G2KS8LS2 | Brand: LVSOMT

## 1. INTRODUCTION

This manual provides detailed instructions for the assembly, operation, and maintenance of your LVSOMT 33-inch Sideboard Buffet Cabinet. Designed for versatility, this modern accent credenza can enhance various spaces including your kitchen, dining room, entryway, living room, office, or study room. Please read these instructions carefully before assembly and use to ensure safe and proper functionality.

## 2. SAFETY INFORMATION

- **Weight Capacity:** Do not exceed a load limit of **60 lbs (27 kg)** on the tabletop. Each internal shelf has a maximum weight capacity of **25 lbs (11 kg)**. Overloading can cause instability and damage.
- **Assembly:** Assemble the cabinet strictly according to the provided step-by-step instructions. Incorrect assembly may lead to structural weakness and potential injury.
- **Stability:** Ensure the cabinet is placed on a flat, stable surface. If necessary, use wall anchor kits (not included) to prevent tipping, especially in households with children or pets.
- **Material:** This product is made from high-quality MDF and wood. Avoid exposing it to excessive moisture or direct heat sources to prevent warping or damage.

## 3. PACKAGE CONTENTS

Before beginning assembly, verify that all components and hardware are present and undamaged. Refer to the separate parts list included in your package. If any parts are missing or damaged, please contact LVSOMT customer support.

- Cabinet Panels (various sizes)
- Adjustable Shelves (2)
- Doors (2)
- Hinges and Fasteners
- Assembly Hardware (screws, dowels, etc.)

- Instruction Manual

## 4. ASSEMBLY INSTRUCTIONS

---

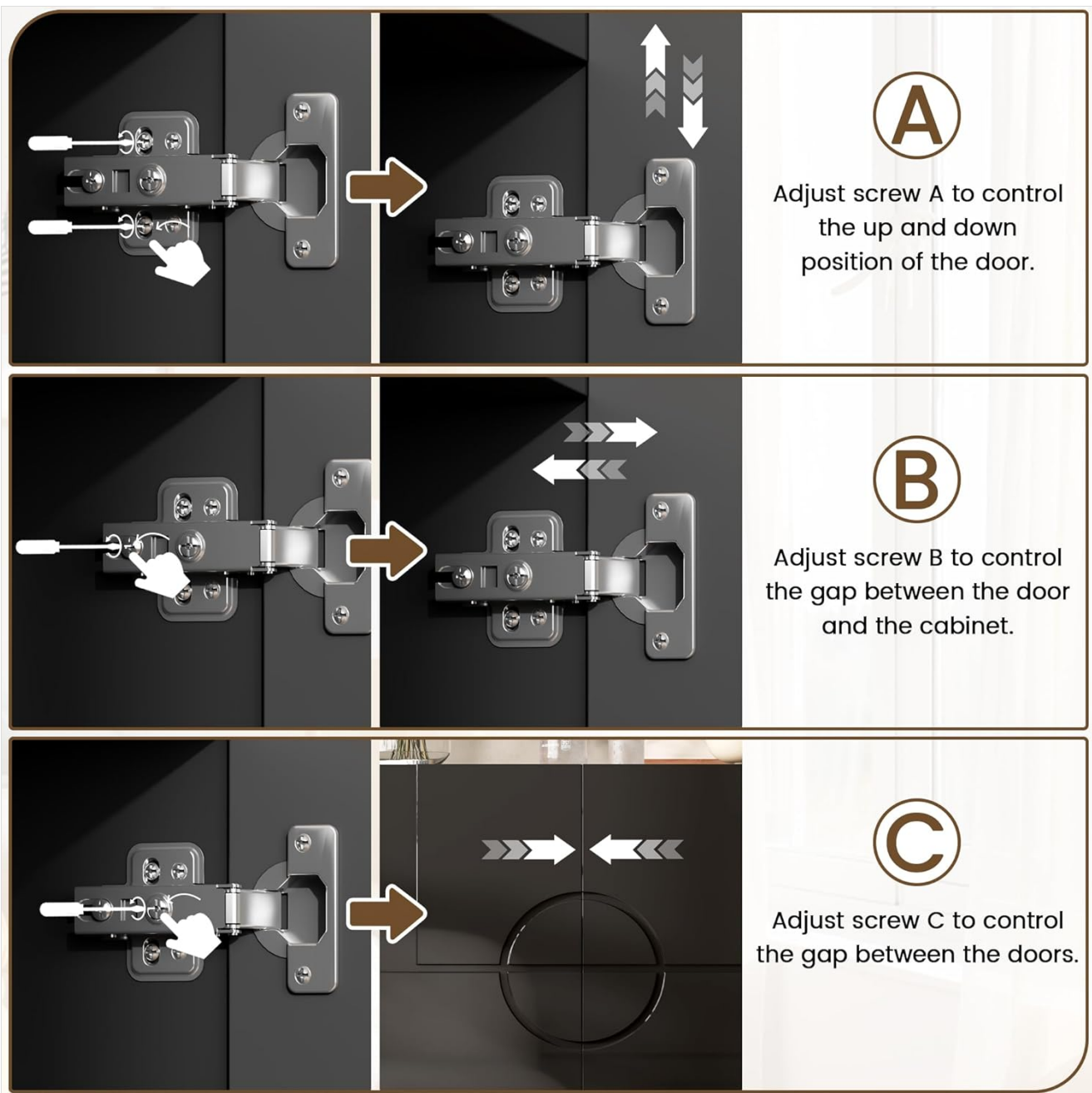
Assembly of the LVSOMT Sideboard Buffet Cabinet is designed to be straightforward. Please follow the step-by-step instruction manual provided in your package. All components are labeled for easy identification.

### 4.1 General Assembly Steps

1. **Unpack and Organize:** Carefully unpack all components and lay them out on a clean, soft surface to prevent scratches. Identify each part using the labels and the parts list.
2. **Follow the Manual:** Refer to the included step-by-step instruction manual for the precise order of assembly. Ensure all screws and fasteners are tightened securely, but do not overtighten.
3. **Door Installation:** Attach the two doors using the provided hinges. The hinges are adjustable to ensure proper alignment and gap between the doors and the cabinet frame.
4. **Shelf Installation:** Insert the adjustable internal partitions (shelves) into the desired positions. The shelves can be moved to accommodate items of various heights.

### 4.2 Hinge Adjustment

The cabinet features adjustable hinges to ensure the doors align perfectly. Use a screwdriver to adjust the screws on each hinge as follows:



**Image: Hinge Adjustment Guide.** This image illustrates the three adjustment screws on the hinges. Screw A controls the up and down position of the door. Screw B controls the gap between the door and the cabinet. Screw C controls the gap between the two doors.

## 5. OPERATING INSTRUCTIONS (USAGE)

Your LVSOMT Sideboard Buffet Cabinet is designed for versatile storage and display. Its compact size and elegant design make it suitable for various applications.

### 5.1 Versatile Placement

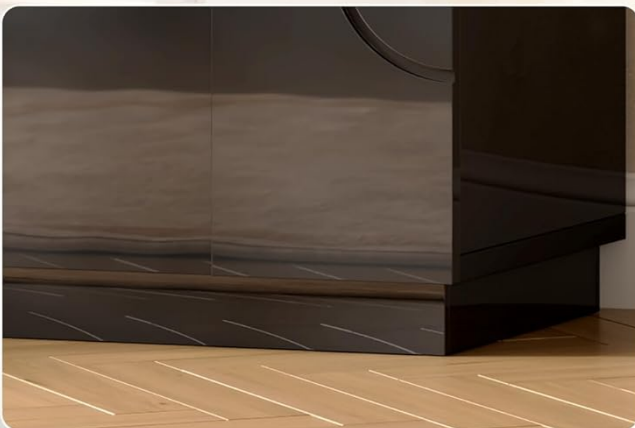
- **Dining Room:** Use as a buffet cabinet for serving dishes or storing dinnerware.
- **Kitchen:** Functions as a coffee or wine bar, or for general kitchen storage.
- **Entryway:** Ideal as a console cabinet for keys, mail, and decorative items.
- **Living Room/Office:** Provides accent storage for books, media, or office supplies.



◀ **Geometric Design**



**Adjustable Hinge** ▶



◀ **Reinforced Base**

**Image: Multipurpose Design.** This image displays the cabinet in different settings, highlighting its adaptability as a TV stand, credenza, sideboard, buffet cabinet, storage cabinet, or bar cabinet.

## 5.2 Adjustable Shelves

The cabinet includes two adjustable internal shelves. To adjust their height:

1. Empty the shelf of all contents.
2. Carefully lift the shelf and remove it from its current support pegs.
3. Relocate the support pegs to the desired height within the pre-drilled holes.
4. Place the shelf back onto the support pegs, ensuring it is level and secure.

## ■ LARGE SPACE & ADJUSTABLE SHELVES



**Image: Large Space & Adjustable Shelves.** This image shows the interior of the cabinet with items stored on the shelves, illustrating the adjustable height feature with arrows indicating movable space.

## 6. MAINTENANCE AND CARE

To maintain the appearance and longevity of your LVSOMT Sideboard Buffet Cabinet, follow these care guidelines:

- **Cleaning:** The high-gloss surface is easy to clean. Wipe regularly with a soft, damp cloth. Avoid abrasive cleaners or harsh chemicals that could damage the finish.
- **Spills:** The surface is waterproof. Promptly wipe up any spills to prevent watermarks or damage.
- **Scratch Resistance:** While the surface is scratch-resistant, avoid dragging sharp or heavy objects across it. Use coasters or placemats for items placed on the tabletop.
- **Sunlight:** Avoid prolonged exposure to direct sunlight to prevent fading or discoloration of the wood finish.



**Image: Spacious Tabletop Features.** This image visually represents the tabletop's key attributes: easy to clean, waterproof, and scratch-resistant, ensuring durability for everyday use.

## 7. TROUBLESHOOTING

If you encounter any issues with your LVSOMT Sideboard Buffet Cabinet, please refer to the following common solutions:

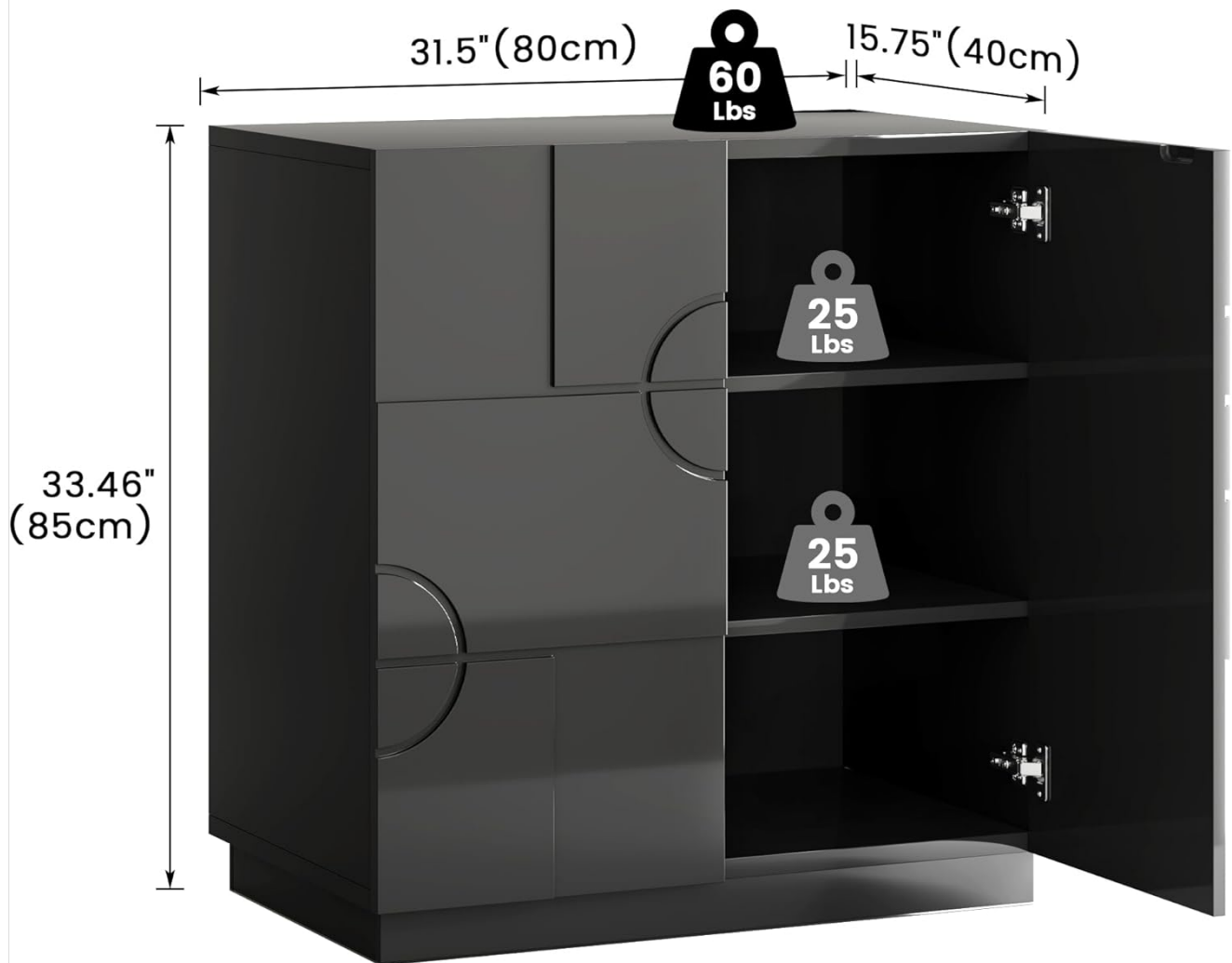
- **Wobbly Cabinet:** Ensure all screws and fasteners are securely tightened. Check that the cabinet is on a level surface. Adjust the feet if applicable (this model has a reinforced base, not adjustable feet).
- **Misaligned Doors:** Adjust the hinges using the instructions in Section 4.2. Small adjustments can correct gaps and alignment issues.
- **Difficulty Assembling:** Double-check the step-by-step manual. Ensure all parts are correctly oriented and that you are using the correct hardware for each step.

For further assistance, please contact LVSOMT customer support.

## 8. SPECIFICATIONS

Feature	Detail
Model Number	B0G2KS8LS2
Brand	LVSOMT
Product Dimensions (D x W x H)	15.75" x 31.5" x 33.46" (40cm x 80cm x 85cm)
Material	High-Quality MDF, Wood, Water-Based Low Odor Paint
Color	High Gloss Black
Tabletop Weight Capacity	60 lbs (27 kg)
Shelf Weight Capacity (each)	25 lbs (11 kg)
Number of Doors	2
Number of Shelves	2 (adjustable)
Assembly Required	Yes
Style	Modern

## ■ PRODUCT SIZE



**Image: Product Size.** This diagram illustrates the overall dimensions of the cabinet: 31.5 inches (80cm) width, 15.75 inches (40cm) depth, and 33.46 inches (85cm) height. It also shows the weight capacities for the tabletop (60 lbs) and internal shelves (25 lbs each).

## 9. WARRANTY AND SUPPORT

LVSOMT is committed to providing high-quality home furniture and customer satisfaction. While specific warranty details are not provided in this manual, please retain your proof of purchase for any warranty claims.

If you have any questions, require replacement parts, or need assistance with assembly or product issues, our professional support team is available to help. Please contact LVSOMT customer service, and we will endeavor to resolve any issues within 24 hours.

For contact information, please refer to the packaging or the official LVSOMT website.