



Manuals.plus /

› Elite Gourmet /

› Elite Gourmet SLIMTOAST ECT2517G 2-Slice Long Slot Toaster User Manual

## Elite Gourmet ECT2517G

# Elite Gourmet SLIMTOAST ECT2517G 2-Slice Long Slot Toaster User Manual

Model: ECT2517G

## INTRODUCTION

Thank you for choosing the Elite Gourmet SLIMTOAST 2-Slice Long Slot Toaster. This manual provides important information for the safe and efficient use of your appliance. Please read it thoroughly before operation and keep it for future reference.

## IMPORTANT SAFEGUARDS

When using electrical appliances, basic safety precautions should always be followed, including:

- Read all instructions before operating.
- Do not touch hot surfaces. Use handles or knobs.
- To protect against electrical shock, do not immerse cord, plugs, or toaster in water or other liquid.
- Close supervision is necessary when any appliance is used by or near children.
- Unplug from outlet when not in use and before cleaning. Allow to cool before putting on or taking off parts.
- Do not operate any appliance with a damaged cord or plug, or after the appliance malfunctions or has been damaged in any manner.
- The use of accessory attachments not recommended by the appliance manufacturer may cause injuries.
- Do not use outdoors.
- Do not let cord hang over edge of table or counter, or touch hot surfaces.
- Do not place on or near a hot gas or electric burner, or in a heated oven.
- Extreme caution must be used when moving an appliance containing hot oil or other hot liquids.
- Always attach plug to appliance first, then plug cord into the wall outlet. To disconnect, turn any control to "off", then remove plug from wall outlet.
- Do not use appliance for other than intended use.

- Oversize foods, metal foil packages, or utensils must not be inserted in a toaster as they may create a fire or risk of electric shock.
- A fire may occur if toasters are covered or touching flammable material, including curtains, draperies, walls, and the like, when in operation.
- Do not attempt to dislodge food when toaster is plugged in.
- To avoid the possibility of fire, do not leave toaster unattended during use.

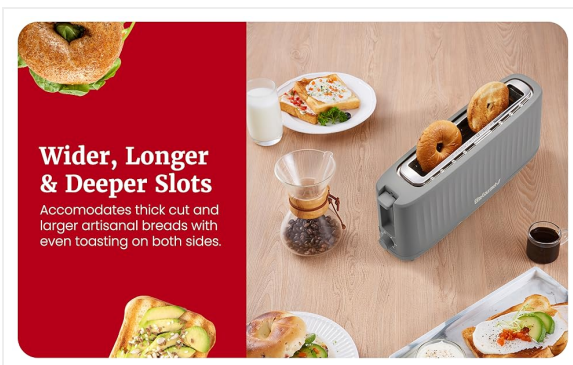
## PRODUCT FEATURES

---

The Elite Gourmet SLIMTOAST Toaster is designed for convenience and efficiency. Its slim profile saves counter space while offering versatile toasting capabilities.



**Sleek & Stylish Design:** The toaster features a modern, space-saving profile that complements any kitchen decor.



**Extra-Wide 1.5-inch Slots:** Designed to fit a variety of breads, including bagels, waffles, and artisan slices.



**6 Toasting Shades:** Adjustable browning levels from light to dark to suit individual preferences.



**Slide-Out Crumb Tray:** For easy cleaning and maintenance.

## SETUP

### Unpacking

1. Carefully remove the toaster and all packaging materials from the box.
2. Remove any promotional labels or stickers from the toaster.
3. Wipe the exterior of the toaster with a damp cloth to remove any dust.

### Placement

Place the toaster on a stable, flat, heat-resistant surface. Ensure there is adequate space around the toaster for ventilation, especially above the toasting slots. Do not place it near curtains, walls, or other flammable materials.

### First Use (Burn-Off)

Before toasting food for the first time, operate the toaster without bread for a few minutes on the highest setting. This will burn off any manufacturing residues and eliminate odors. It is normal for a slight odor or smoke to be present during this initial use.

## OPERATING INSTRUCTIONS

---

### Loading Bread

Insert up to two slices of bread, bagels, waffles, or other items into the extra-wide slots. The self-centering guides will automatically position the items for even toasting.

### Selecting Toast Setting

Turn the browning control dial to your desired toast shade. The toaster offers 6 settings:

- **Settings 1-2:** Lightly golden toast.
- **Settings 3-4:** Medium golden toast.
- **Settings 5-6:** Dark and crispy toast.



**Browning Levels:** Choose from 6 settings for your preferred toast shade.

### Starting the Toasting Cycle

Press the carriage lever down until it locks into place. The toasting cycle will begin. The lever will automatically pop up when the selected browning level is reached.

### Cancel Function

To stop the toasting cycle at any time, press the 'Eject/Cancel' button. The carriage lever will immediately pop up, and the toasting will stop.

## MAINTENANCE AND CLEANING

---

Always unplug the toaster and allow it to cool completely before cleaning.

### Crumb Tray Cleaning

1. Locate the slide-out crumb tray at the bottom of the toaster.
2. Pull the tray out to remove it.
3. Discard crumbs and wipe the tray with a damp cloth.
4. Ensure the tray is completely dry before reinserting it into the toaster.

### Exterior Cleaning

Wipe the exterior of the toaster with a soft, damp cloth. Do not use abrasive cleaners or scouring pads, as they may scratch the surface. Never immerse the toaster in water or any other liquid.

### Cord Storage

The toaster features under-body cord storage to keep your countertop tidy when the appliance is not in use.

## Slim 2-Slice Toaster with **FULL SIZE FEATURES**



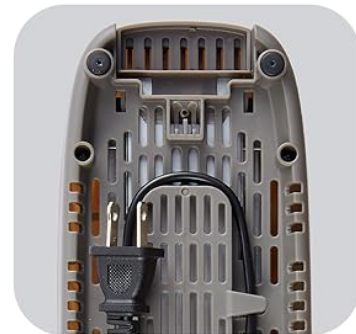
### Crumb Tray

Slide-out crumb tray makes cleanup quick and easy after every use.



### Extra-Lift Lever

Lifts breads higher so you can remove them comfortably and safely.



### Cord Storage

Under body cord storage for a mess free counter.

**Convenient Features:** Crumb tray, extra-lift lever, and cord storage for ease of use and maintenance.

## TROUBLESHOOTING

---

Problem	Possible Cause	Solution
Toaster does not turn on.	Not plugged in; power outlet not working.	Ensure the toaster is securely plugged into a working electrical outlet.
Bread is not toasting evenly.	Uneven bread thickness; crumb tray full.	Ensure bread slices are of similar thickness. Clean the crumb tray regularly.
Smoke coming from toaster.	Food lodged in slots; crumb tray full; setting too high.	Immediately press the Cancel button and unplug. Allow to cool, then remove any lodged food. Clean crumb tray. Adjust browning setting.
Carriage lever does not stay down.	Toaster not plugged in; internal mechanism issue.	Ensure the toaster is plugged in. If the issue persists, contact customer support.

## SPECIFICATIONS

- **Brand:** Elite Gourmet
- **Model:** ECT2517G
- **Color:** Grey
- **Material:** Plastic
- **Product Dimensions:** 15.67"D x 3.94"W x 7.28"H
- **Wattage:** 900 watts
- **Number of Slices:** 2
- **Special Features:** Cancel Function, Cool Touch Exterior
- **Voltage:** 120 Volts
- **Number of Settings:** 6
- **Item Weight:** 2.87 pounds

## WARRANTY AND SUPPORT

For warranty information or technical support, please refer to the warranty card included with your product or visit the official Elite Gourmet website. Do not attempt to repair the appliance yourself.