



[Manuals.plus](#) /

› [Makeid](#) /

› Makeid P31S Portable Industrial Label Maker User Manual

Makeid P31S

Makeid P31S Portable Industrial Label Maker User Manual

Model: P31S

1. INTRODUCTION

Thank you for choosing the Makeid P31S Portable Industrial Label Maker. This device is designed for efficient and high-quality labeling in various industrial and professional environments. It offers advanced features for creating durable and clear labels for wires, cables, equipment, and more. This manual provides essential information for the proper setup, operation, and maintenance of your label maker.

2. PRODUCT FEATURES

- **High-Resolution Printing:** Features a 1-inch print head with 300dpi resolution, providing 48% clearer prints compared to standard label makers. Supports a 25.4mm print width for up to 8 lines of text.
- **App-Enabled Customization:** Utilize the MakeID app for label creation, offering 48 templates, over 80 symbols, and 20 fonts. Supports barcodes, QR codes, and bulk data import for efficient on-site labeling.
- **Long-Lasting Battery & Fast Printing:** Equipped with a 2000mAh battery, providing up to 90 days of standby time. Achieves a print speed of 25.4mm/s for rapid label production.
- **Simple Tape Management:** Integrated tape cartridge system simplifies installation and replacement. The device automatically recognizes label types and matches templates, reducing waste.
- **Compact and Portable Design:** Weighing approximately 580g, the P31S is lightweight and easy to transport for use in various job sites.

Features Of The P31



Image: Key features of the Makeid P31S label maker, including one-click cutting, 300 dpi printhead, dust-proof cover, 576g weight, 2000mAh battery, and Bluetooth connectivity. Dimensions are also shown: 13.0 cm height, 10.4 cm width, and 6.1 cm depth.

3. SETUP GUIDE

3.1 Unpacking and Initial Charge

1. Carefully remove the label maker and all accessories from the packaging.
2. Connect the label maker to a power source using the provided charging cable. Allow the device to fully charge before first use. The battery indicator will show charging status.

3.2 Installing Label Tape

1. Open the tape compartment cover on the label maker.
2. Insert the label tape cartridge into the compartment, ensuring it clicks into place. The integrated system ensures correct positioning.
3. Close the tape compartment cover securely.

3.3 Connecting to Your Device

The Makeid P31S connects via Bluetooth to your smartphone or tablet (iOS/Android) and via USB to your computer (Windows/MacOS).

1. For Mobile Devices:

- Download the "MakeID" app from your device's app store.
- Turn on the label maker and enable Bluetooth on your mobile device.
- Open the MakeID app and follow the on-screen instructions to pair with your P31S label maker.

2. For Computers:

- Visit the official Makeid website to download the appropriate driver and software for Windows or MacOS.
- Install the software and connect the label maker to your computer via a USB cable.
- Follow the software instructions to set up the printer.



Image: The Makeid P31S label maker demonstrating versatile connectivity options, including Bluetooth, iOS, Android, Windows, and MacOS. The image shows the label maker connected to a smartphone running the MakeID app and a laptop with the desktop software.

4. OPERATING INSTRUCTIONS

4.1 Creating Labels with the MakeID App

1. Ensure your P31S is connected to your device via Bluetooth or USB.
2. Open the MakeID app or software.
3. Select a template or start a new label design. The app offers 48 templates, 80+ symbols, and 20 fonts.
4. Enter your desired text, numbers, or symbols. You can also generate barcodes and QR codes.
5. Adjust font size, style, alignment, and other formatting options as needed.
6. For bulk labeling, use the data import function within the app.

4.2 Printing Labels

1. After designing your label, preview it on the app/software screen.
2. Confirm the label tape type is correctly recognized by the device.
3. Press the "Print" button in the app/software.
4. The label maker will print the label at a speed of 25.4mm/s.

4.3 Cutting Labels

The P31S features a one-click cutting mechanism. After printing, simply press the designated cutting button or activate the cutting function via the app/software to cleanly separate the label.

4.4 Optimizing Print Margins

The Makeid P31S is designed to print with minimal margins (approximately 1mm), reducing label waste. Ensure your label design fits within the printable area to maximize efficiency.

Print With Less Margin

Eliminate The Waste Of Labels

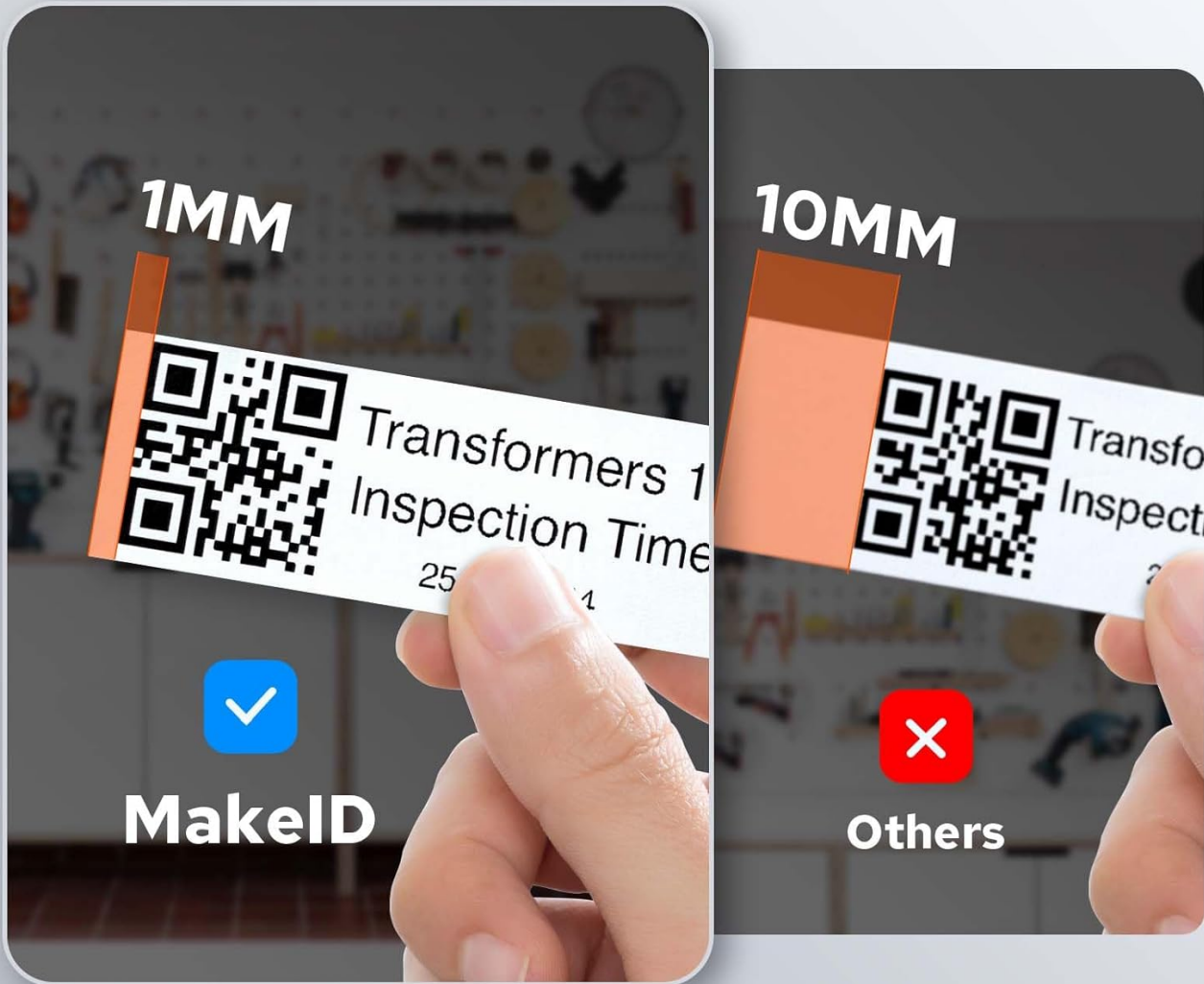


Image: A comparison showing the Makeid P31S printing with a minimal 1mm margin, effectively reducing label waste compared to other label makers that may have larger margins (e.g., 10mm).

5. APPLICATIONS

The Makeid P31S is suitable for a wide range of industrial and professional labeling tasks, including:

- **Wire and Cable Labeling:** Create durable labels for identifying network cables, electrical wires, and other conduits.
- **Facility Identification:** Label assets, equipment, and locations within industrial facilities.
- **Electrical & DataCom Labeling:** Organize and identify components in electrical panels, data racks, and communication systems.
- **Lean and 5S Labeling:** Support workplace organization and standardization initiatives.

Suitable For Various Scenarios



Wire and Cable Labeling



Facility Identification



Electrical & DataCom



Lean and 5S Labeling

Image: The Makeid P31S label maker is suitable for various scenarios, including wire and cable labeling, facility identification, electrical and data communication labeling, and Lean and 5S labeling.

Tear-resistant

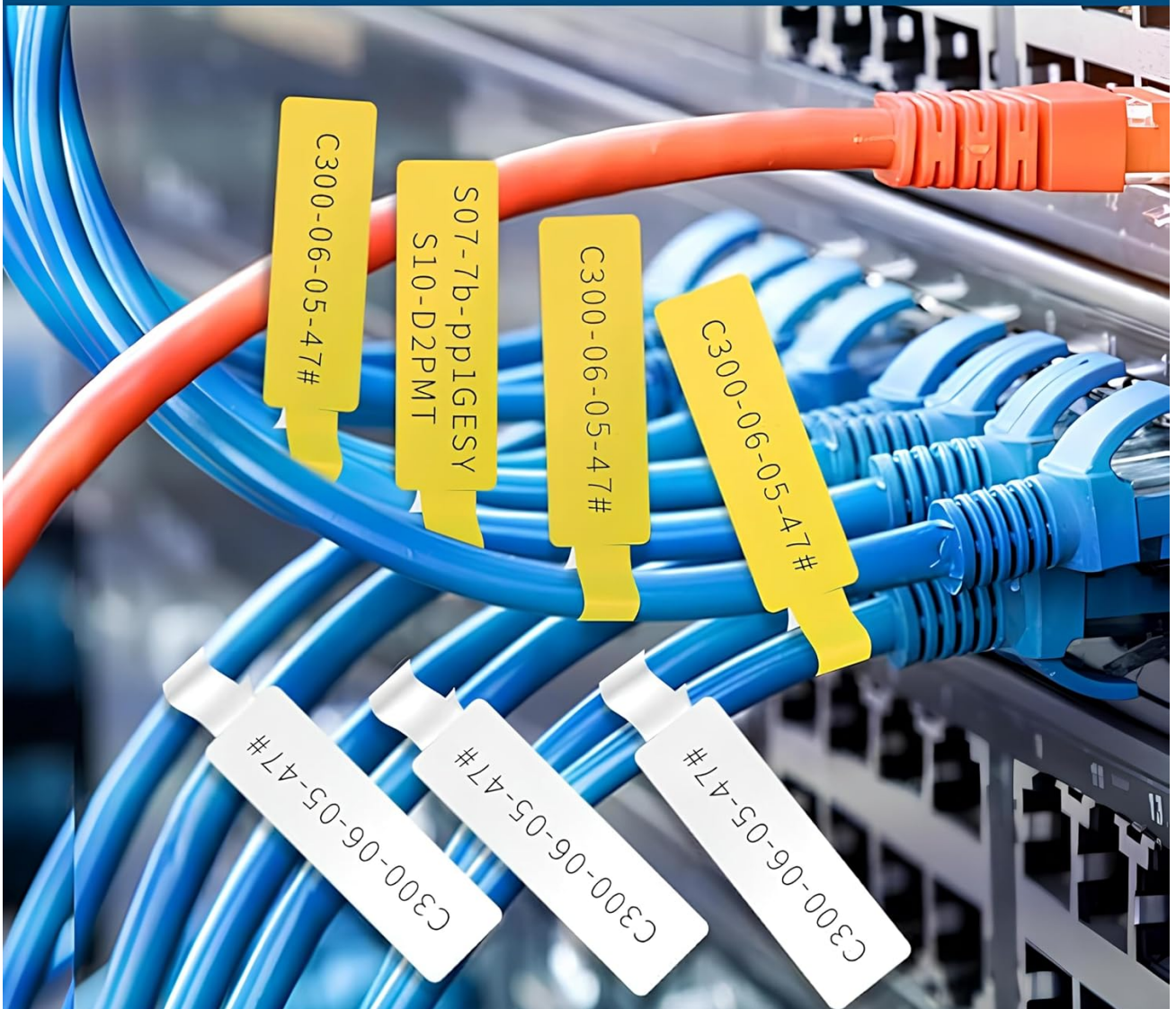
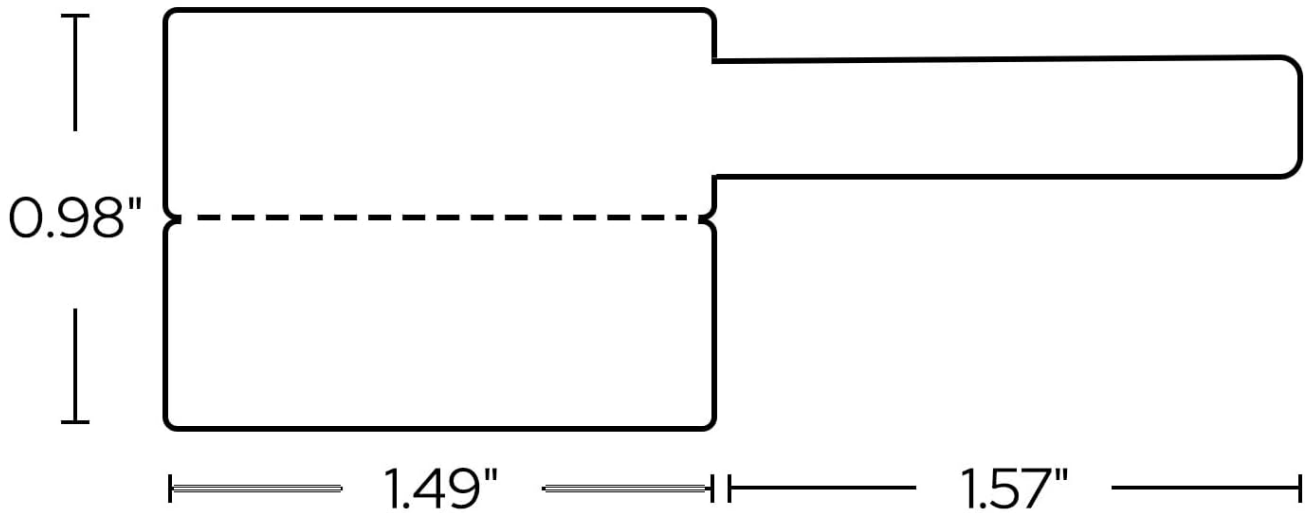


Image: Example of tear-resistant labels applied to various network cables, demonstrating their use for identification in a server rack or similar environment.

Flag Labels for Wire and Cable



100pcs / roll

Image: Diagram illustrating the dimensions of flag labels designed for wire and cable identification, showing a width of 1.49 inches for the main body and 1.57 inches for the flag extension, with a height of 0.98 inches.

6. MAINTENANCE

6.1 Cleaning the Print Head

To ensure optimal print quality, regularly clean the print head. Use a soft, lint-free cloth lightly dampened with isopropyl alcohol. Gently wipe the print head surface. Ensure the device is powered off before cleaning.

6.2 Battery Care

To prolong battery life, avoid fully discharging the battery frequently. Charge the device regularly, especially if it will be stored for an extended period. Store the device in a cool, dry place.

6.3 Dust-proof Cover

Keep the dust-proof cover closed when the label maker is not in use to protect internal components from dust and debris.

7. TROUBLESHOOTING

- **No Power:** Ensure the device is charged. Connect to a power source and check the charging indicator.

- **Poor Print Quality:** Clean the print head (refer to Section 6.1). Ensure the label tape is correctly installed and not damaged. Check print density settings in the app/software.
- **Device Not Connecting:** For Bluetooth, ensure Bluetooth is enabled on both devices and the label maker is discoverable. For USB, ensure drivers are installed and the cable is securely connected. Try restarting both devices.
- **Label Jam:** Power off the device, open the tape compartment, and carefully remove any jammed tape. Ensure the tape is installed correctly.
- **App/Software Issues:** Ensure your app/software is updated to the latest version. Restart the app/software or reinstall if problems persist.

8. SPECIFICATIONS

Model	P31S
Brand	Makeid
Print Resolution	300 dpi
Print Width	25.4 mm (1 inch)
Print Speed	25.4 mm/s
Connectivity	Bluetooth (iOS, Android), USB (Windows, MacOS)
Battery Capacity	2000mAh
Weight	Approx. 580g
Dimensions (approx.)	13.0 cm (H) x 10.4 cm (W) x 6.1 cm (D)



MakeID

**48% Higher
Clarity Than
Others**

VS



Others



Image: A visual comparison highlighting the superior print clarity of the Makeid P31S with its 300dpi resolution, showing a significantly sharper output compared to a 203dpi printer.



Compact and Portable

Image: A person carrying the Makeid P31S label maker in an outdoor setting, emphasizing its compact and portable design suitable for job sites.

9. WARRANTY AND SUPPORT

9.1 Warranty Information

The Makeid P31S Portable Industrial Label Maker comes with a 3-year promise, prioritizing replacements for eligible issues. Please retain your proof of purchase for warranty claims.

9.2 Technical Support

For any technical assistance, troubleshooting, or inquiries, Makeid offers 24/7 technical support. Please refer to the contact information provided with your product packaging or visit the official Makeid website for support details.