

Square Soft Close Quick Release Toilet Seat

Generic Square Soft Close Quick Release Toilet Seat User Manual

1. PRODUCT OVERVIEW

This manual provides comprehensive instructions for the installation, operation, and maintenance of your new Generic Square Soft Close Quick Release Toilet Seat. Designed for comfort and hygiene, this seat features a durable polypropylene construction, a quiet soft-close mechanism, and a convenient quick-release function for easy cleaning.

2. KEY FEATURES

- **High-Quality Material:** Constructed from durable polypropylene for long-lasting use and comfortable seating.
- **Soft Close Mechanism:** The lid and seat close gently and quietly, preventing slamming and extending product lifespan.
- **Quick Release Function:** Allows for easy removal of the seat for thorough cleaning and improved hygiene.
- **Adjustable Hinges:** The installation hinges are adjustable, ensuring universal applicability to most standard square toilets.

3. COMPATIBILITY AND DIMENSIONS

This toilet seat is specifically designed for square-shaped toilets. Please verify your toilet's dimensions against the specifications below to ensure proper fit.



Image 1: Dimensions of the toilet seat. The seat measures 45cm (17.7 inches) in length and 35cm (13.8 inches) in width. The hole spacing is adjustable from 10cm to 22cm, and the adjustable length ranges from 42cm to 48cm.



Image 2: Compatibility diagram. This seat is designed for square-shaped toilets. It shows the required width of 35cm (13.8 inches), length of 42-48cm (16.53-18.89 inches), and fitting hole spacing of 10-22cm (3.93-8.66 inches). It also visually contrasts with incompatible V-shape and O-shape toilets.

Hole Spacing: 10-22 cm (adjustable)

Adjustable Length: 42-48 cm

Width: 35 cm

4. INSTALLATION (SETUP)

All necessary hardware for installation is included. The seat features a top-fixing installation method for ease of assembly.

4.1. Components

Before starting, ensure you have all components: the toilet seat, lid, and the included installation accessories (hinges, screws, washers).



Image 3: Toilet seat and hinges. This image displays the white square toilet seat with its lid closed, alongside the metal hinges and mounting hardware required for installation.

4.2. Installation Steps

1. Position the adjustable hinges into the mounting holes on your toilet bowl.
2. Place the toilet seat onto the hinges, ensuring proper alignment.
3. Secure the hinges from the top using the provided screws and tighten them until the seat is firmly in place. The 360-degree adjustable hinges allow for precise positioning.
4. Test the seat for stability and adjust as needed.



Image 4: Adjustable hinges. This image shows the underside of the toilet seat, highlighting the 360-degree adjustable hinges and the non-slip buffers that provide stability.

5. OPERATION

5.1. Soft Close Function

To operate the soft close feature, simply push the lid or seat down gently. The hydraulic mechanism will engage, allowing the lid and seat to close slowly and silently without manual guidance.



Image 5: Soft close demonstration. This image illustrates the soft close functionality, with the toilet seat lid gently descending towards the bowl.

5.2. Quick Release Function

The quick release mechanism allows for easy removal of the seat for cleaning. Depending on your specific model, the release method may vary:

- **Double-Press Release:** Press the two buttons located near the hinges simultaneously and pull the seat upwards.

- **Square Bottom Release:** Push the lever at the bottom of the seat and pull the seat upwards.

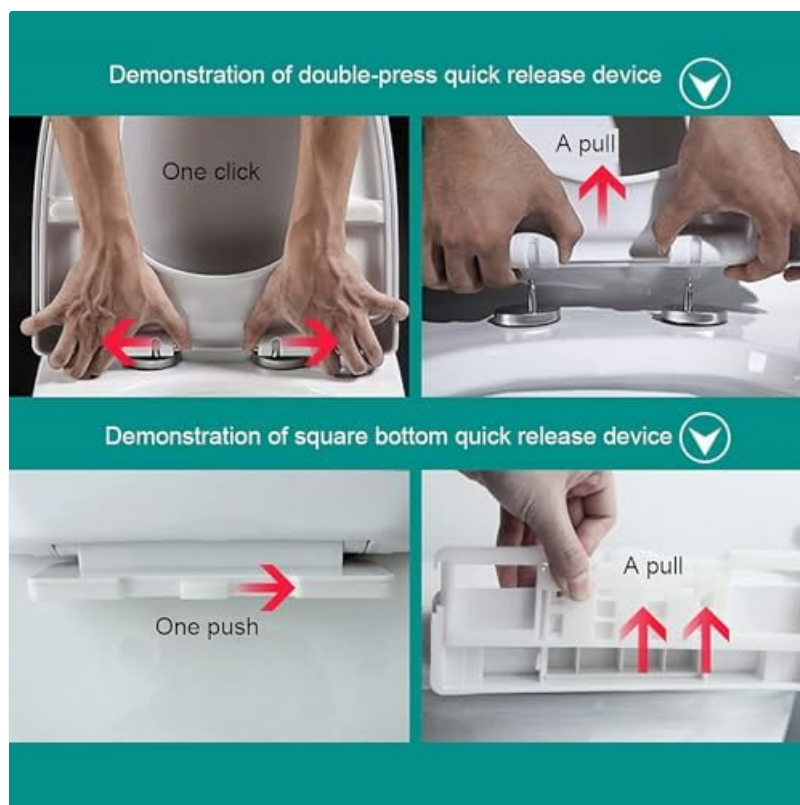


Image 6: Quick release demonstration. This image provides two visual guides for the quick release mechanism: one showing how to detach the seat by pressing two buttons, and another demonstrating a push-and-pull method for a square bottom release.

6. MAINTENANCE

Regular cleaning will help maintain the appearance and hygiene of your toilet seat.

- Clean the toilet seat with a damp cloth and mild soap.
- Avoid using abrasive cleaners, harsh chemicals, or scouring pads, as these can damage the finish.
- Utilize the quick release function to easily remove the seat for thorough cleaning of both the seat and the toilet bowl area.

7. TROUBLESHOOTING

If you encounter any issues with your toilet seat, please refer to the following common solutions:

- **Seat is loose:** Ensure the installation hinges are securely tightened. Re-adjust if necessary.
- **Soft close not working properly:** Check for any obstructions around the hinges. Ensure the seat is correctly aligned on the mounting posts.
- **Difficulty with quick release:** Ensure you are pressing the release buttons or levers firmly and correctly as shown in the operation section.

For persistent issues, please contact customer support.

8. SPECIFICATIONS

Material	Polypropylene (PP)
Shape	Square
Installation Method	Top Fixing
Item Weight	2 kg
ASIN	B0G25QDSFT

9. WARRANTY AND SUPPORT

This product comes with a **3-month warranty** from the date of purchase, covering manufacturing defects. Please retain your proof of purchase for warranty claims.

For technical support, warranty inquiries, or any other questions, please contact the seller or manufacturer through your purchase platform.