



[Manuals.plus](#) /

> [nuphy](#) /

> nuphy Node75 Wireless Mechanical Keyboard User Manual

## nuphy Node75

# nuphy Node75 Wireless Mechanical Keyboard User Manual

Model: Node75

## INTRODUCTION

---

The nuphy Node75 is a 75% wireless mechanical keyboard designed for versatile use across various devices and operating systems. It features hot-swappable switches, PBT keycaps, and multiple connectivity options including Bluetooth, 2.4GHz wireless, and USB-C wired mode. This manual provides detailed instructions for setting up, operating, maintaining, and troubleshooting your Node75 keyboard.



Image: The nuphy Node75 Wireless Mechanical Keyboard in Gray Low Profile, showcasing its compact 75% layout.

## SETUP

---

### Package Contents

Before proceeding, ensure all items are present in the package:

- 1 x Node75 Keyboard (Low-Profile)
- 1 x 2.4G Receiver
- 1 x USB-C to USB-A adapter
- 1 x USB Cable (USB-C to USB-A)
- Quick Start Guide
- Other accessories (e.g., extra keycaps for Windows/Mac)

### Initial Connection and Charging

For initial setup or charging, connect the keyboard to your computer using the provided USB-C cable. The keyboard will automatically enter wired mode and begin charging. A full charge provides up to 1000 hours of runtime.

## OPERATING INSTRUCTIONS

### Connectivity Modes

The Node75 supports three connectivity modes: USB-C wired, Bluetooth, and 2.4GHz wireless. A switch on the keyboard allows you to select the desired mode.



**Three Connection Modes**  
BT/2.4GHz/USB-C Wired  
support multiple devices and system

**USB-C**  
Slide to wired mode  
Plug and Play  
Connection Mode1

**Bluetooth**  
Slide to wireless mode  
FN + 1 / 2 / 3  
Connection Mode2

**2.4GHz**  
Slide to wireless mode  
FN + 4  
Connection Mode3

Image: Diagram illustrating the three connection modes: USB-C (wired), Bluetooth, and 2.4GHz wireless, along with their activation key combinations.

- **USB-C Wired Mode:** Connect the USB-C cable to the keyboard and your device. The keyboard will function immediately.
- **Bluetooth Mode:** Slide the switch to wireless mode. Press **Fn + 1 / 2 / 3** to pair with up to three different Bluetooth devices. The keyboard supports simultaneous pairing with up to 5 devices.

- **2.4GHz Wireless Mode:** Slide the switch to wireless mode. Insert the 2.4G receiver into your device's USB port. Press **Fn + 4** to activate 2.4GHz mode.

## Gesture Control

The Node75 features a touch-sensitive surface for gesture control, located on the top right of the keyboard. This allows for intuitive adjustment of volume, screen brightness, or keyboard backlight via swipe gestures. These functions are configurable through the NuPhyIO software.

# Intuitive Interaction Efficient Experience

Using touch gestures, you can adjust the volume, screen brightness, and keyboard backlight.

(NuPhyIO enables more customizable operation settings)



Image: Close-up view of the top right section of the Node75 keyboard, highlighting the touch-sensitive area for gesture control.

## RGB Backlight Customization

Personalize the keyboard's RGB lighting effects and animations using the NuPhyIO software. This allows for a wide range of visual customizations that can respond to your keystrokes.



Image: The nuphy Node75 keyboard positioned in front of a monitor displaying the NuPhyIO software interface, demonstrating programmable software support.

## Adjustable Kickstand

The keyboard features a two-stage kickstand, allowing you to adjust the typing angle to 4°, 8°, or 10° for ergonomic comfort.

# Two-stage kickstand with adjustable height

3 angles, suitable for different scenes.

4° / 8° / 10°

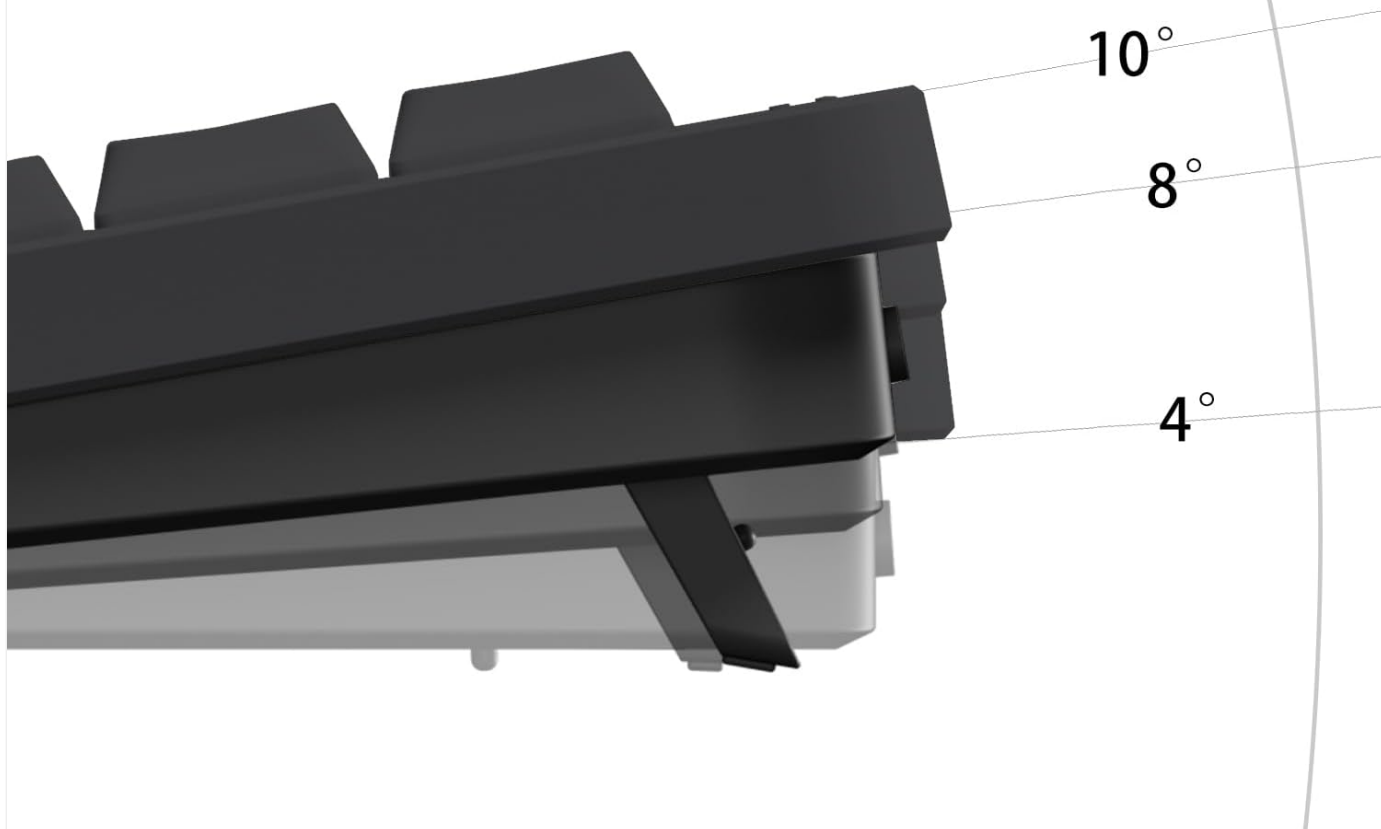


Image: Side view of the nuphy Node75 keyboard, illustrating the two-stage kickstand and its adjustable height options (4°, 8°, 10°).

## MAINTENANCE

---

### Cleaning the Keyboard

- Use a soft, lint-free cloth slightly dampened with water or a mild cleaning solution to wipe the keycaps and casing.
- Avoid spraying liquids directly onto the keyboard.
- For dust and debris between keycaps, use compressed air.
- To clean under the keycaps, carefully remove them using a keycap puller (not included) and clean the switches and plate.

### Keycap and Switch Care

The Node75 features durable PBT keycaps that are resistant to shine and fading. For hot-swappable switches, ensure proper alignment when inserting or removing them to prevent damage to the switch pins or PCB sockets.

# Gasket Structure

Delivers a softer, more consistent typing experience

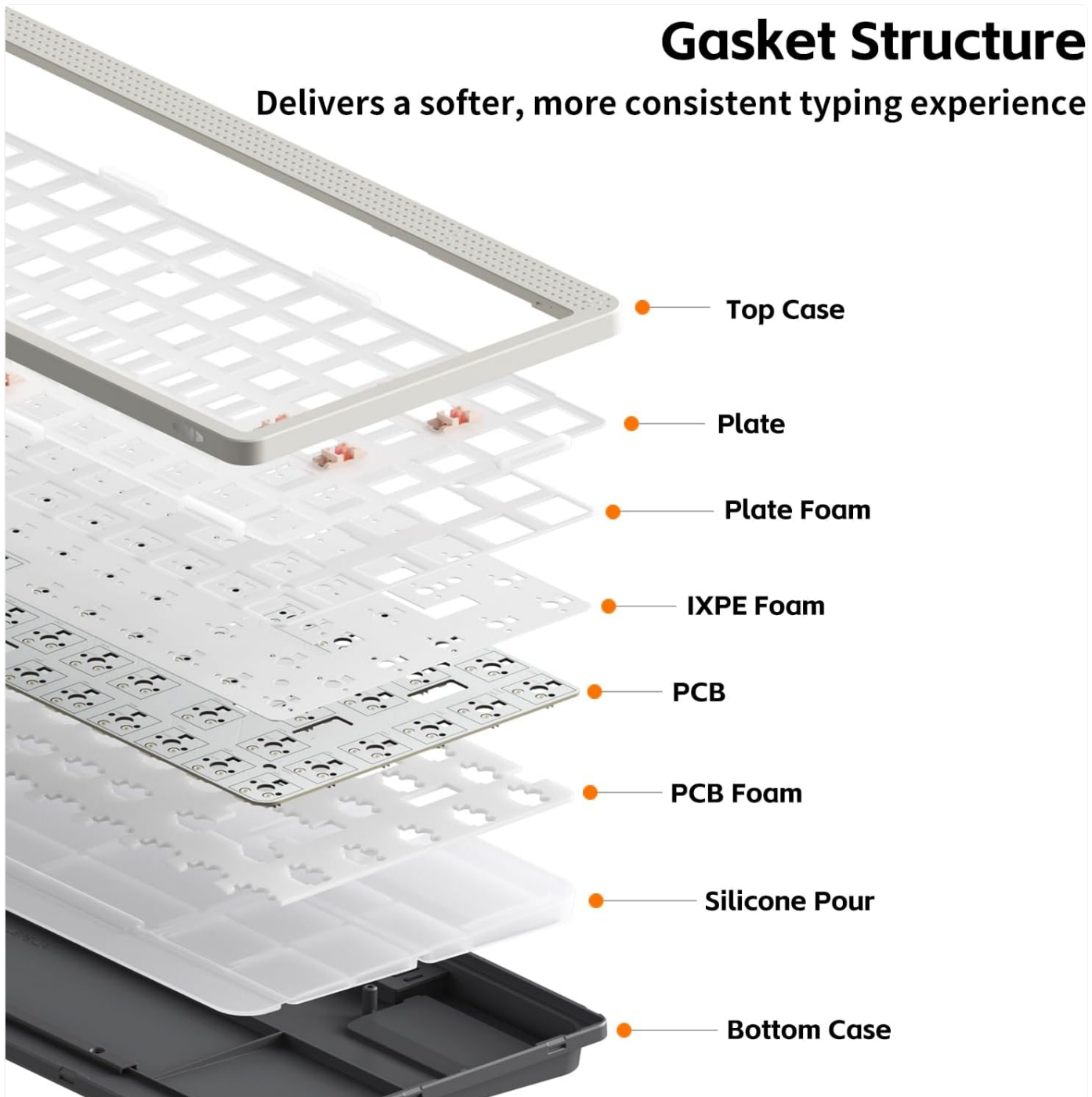


Image: Exploded diagram of the Node75's gasket structure, showing components like the top case, plate, various foam layers, PCB, and bottom case, which contribute to the typing experience.

## TROUBLESHOOTING

Issue	Possible Cause	Solution
Keyboard not responding in wireless mode.	Low battery, incorrect mode selected, pairing issue.	<ul style="list-style-type: none"><li>◦ Charge the keyboard via USB-C.</li><li>◦ Ensure the mode switch is set to wireless (Bluetooth or 2.4GHz).</li><li>◦ For Bluetooth, re-pair the device (Fn + 1/2/3).</li><li>◦ For 2.4GHz, ensure the receiver is properly inserted and re-activate (Fn + 4).</li><li>◦ Try wired mode to confirm keyboard functionality.</li></ul>

Issue	Possible Cause	Solution
Keys are not registering or double-typing.	Loose switch, debris under keycap, software issue.	<ul style="list-style-type: none"> <li>Carefully remove the keycap and ensure the switch is fully seated.</li> <li>Clean any debris around the switch.</li> <li>If hot-swappable, try replacing the switch with a spare.</li> <li>Check NuPhyIO for any firmware updates or key remapping issues.</li> </ul>
RGB lighting not working or incorrect.	Software settings, low battery.	<ul style="list-style-type: none"> <li>Ensure the keyboard is sufficiently charged.</li> <li>Use NuPhyIO software to adjust RGB settings and effects.</li> <li>Perform a factory reset if issues persist (refer to NuPhyIO or quick start guide for specific instructions).</li> </ul>

## SPECIFICATIONS

---

<b>Brand</b>	nuphy
<b>Model Name</b>	Node75
<b>Model Number</b>	Node75 keyboard (Mfr Part Number: Node75-LOW-GY-RD)
<b>Connectivity Technology</b>	Bluetooth, USB-C, 2.4GHz
<b>Compatible Devices</b>	Laptop, PC, Tablet (Supports Windows/Mac OS system)
<b>Number of Keys</b>	84
<b>Special Features</b>	Gesture Touch, Tri-Mode Connectivity, Multi-Device Support, Hot-Swappable Switches, PBT Keycaps, RGB Backlight
<b>Recommended Product Uses</b>	Gaming, Office
<b>Keyboard Plate Material</b>	Polycarbonate
<b>Item Weight</b>	659 Grams
<b>Battery Capacity</b>	3000mAh (up to 1000 hours runtime)
<b>Sampling Rate</b>	1000Hz (in 2.4GHz and wired mode)

## WARRANTY INFORMATION

---

The nuphy Node75 keyboard typically comes with a manufacturer's warranty covering defects in materials and workmanship. Please refer to the warranty card included in your product packaging or visit the official nuphy website for specific warranty terms, duration, and claim procedures. Keep your proof of purchase for warranty service.

## CUSTOMER SUPPORT

---

For further assistance, technical support, or inquiries regarding your nuphy Node75 keyboard, please visit the official nuphy support website. You may find FAQs, driver downloads, and contact information for customer service there.

