

Manuals.plus /

› Dryhsip /

› Dryhsip 5-in-1 Hair Styler Curler & Air Dryer Brush (Model WT-638) - Instruction Manual

Dryhsip WT-638

Dryhsip 5-in-1 Hair Styler Curler & Air Dryer Brush

Model: WT-638

Brand: Dryhsip

PRODUCT OVERVIEW

The Dryhsip 5-in-1 Hair Styler Curler & Air Dryer Brush is a versatile hair styling tool designed to dry, curl, straighten, and volumize hair. It features advanced negative ion technology to reduce static and frizz, leaving hair smooth and shiny. Equipped with an 800W motor, it generates strong yet gentle airflow for efficient styling. Its compact and lightweight design makes it suitable for travel.

This multi-functional device combines a hot air brush, curling wand, straightening brush, and volumizing brush to meet various hairstyle needs at home.

IMPORTANT SAFETY INFORMATION

Please read all safety warnings and instructions provided in the product's packaging and documentation before use. Ensure the device is used only as intended and keep it away from water. Do not use if the cord or plug is damaged. Always unplug the device when not in use.

PACKAGE CONTENTS

Your Dryhsip 5-in-1 Hair Styler includes the following components:

- Main Styler Unit
- Air Curling Wrap Styler (Left)
- Air Curling Wrap Styler (Right)
- Blow Dryer Brush (Drying Nozzle)
- Curling Brush Iron (Round Brush)
- Detachable Hot Air Brush (Smoothing Brush)

Blow dry your hair quickly

Action of negative ions



 | Wind Speed
20M/s

 | Air Flow
10L/s

 | 110,000
RPM

Image: The Dryhsip 5-in-1 Hair Styler main unit and its various attachments laid out.

SETUP

Attaching Accessories

1. Ensure the main styler unit is unplugged and cool.
2. Align the desired attachment with the top of the main unit.
3. Twist the attachment clockwise until it clicks securely into place.

Detaching Accessories

1. Ensure the main styler unit is unplugged and cool.
2. Locate the release button on the side of the main unit.
3. Press and hold the release button while twisting the attachment counter-clockwise to remove it.

OPERATING INSTRUCTIONS

Power On/Off and Settings

1. Plug the device into a standard 110V electrical outlet.
2. Rotate the knob switch at the bottom of the main unit to turn it ON.
3. Select your desired temperature setting (Low, Medium, High) and speed setting using the controls on the unit. The maximum temperature is 100 Degrees Celsius.
4. To turn OFF, rotate the knob switch back to the OFF position.

Using the Attachments

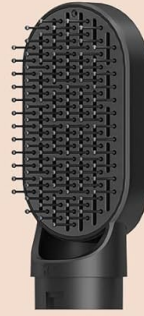
Always ensure hair is towel-dried or slightly damp for best results, unless using the straightening brush on dry hair.

- **Drying Nozzle:** Attach the drying nozzle for quick hair drying. Direct the airflow towards your hair, moving the styler continuously to avoid concentrating heat in one area.
- **Smoothing Brush:** For straightening and smoothing, attach the smoothing brush. Work on small sections of hair, gliding the brush from roots to ends.
- **Round Curling Brush:** To add volume and soft curls, use the round curling brush. Wrap sections of hair around the brush and apply heat, then gently release.
- **Air Curling Wrap Styler:** For automatic curling, attach the appropriate air curling barrel (left or right, depending on the side of your head). Hold a small section of hair near the barrel, and the Coanda effect will automatically wrap the hair around it. Hold for 5-10 seconds, then release. For thicker hair, a longer hold may be needed.



DRYING NOZZLE

Change the direction and increase the air



SMOOTHING BRUSH

Detangling and smoothing hair.



Air curling barrel

Natural curling through airflow, automatic wrapping



ROUND CURLING BRUSH

Easy to create a high skull top with fluffy bangs

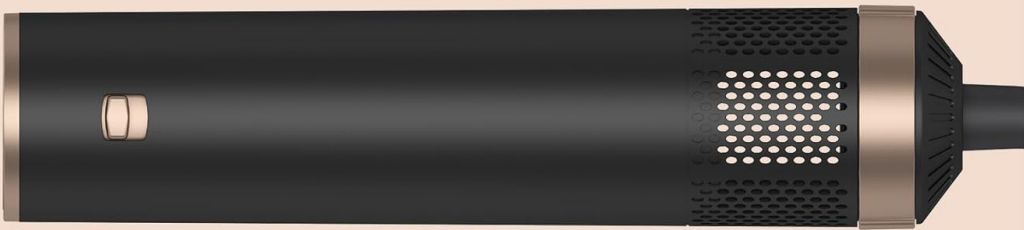


Image: Visual guide to the different attachments including the drying nozzle, smoothing brush, air curling barrel, and round curling brush.



Image: Illustration of the 3-level adjustable temperature settings (Low, Middle, High) on the Dryhsip 5-in-1 Hair Styler.

your browser does not support the video tag.

Video: Official demonstration of the Dryhsip 5-in-1 Hair Styler and Hair Dryer Brush in use, showcasing its various functions.

your browser does not support the video tag.

Video: Official overview of the Dryhsip 5-in-1 Hair Styler, highlighting its features and ease of use.

MAINTENANCE

Cleaning the Styler

1. Always unplug the device and allow it to cool completely before cleaning.
2. Wipe the main unit and attachments with a soft, damp cloth. Do not use abrasive cleaners or harsh chemicals.
3. For brushes, gently remove any tangled hair.
4. Ensure all parts are completely dry before storing or next use.

TROUBLESHOOTING

- **Device not turning on:** Ensure the device is securely plugged into a working electrical outlet. Check the power switch is in the ON position.
- **Attachments not staying in place:** Ensure the attachment is properly aligned and twisted clockwise until it clicks. Press the release button to ensure it's not stuck.
- **Hair not curling/straightening effectively:** Ensure hair is clean and free of excessive product. Use on small sections of hair. Adjust temperature and speed settings according to your hair type. For curling, ensure hair is wrapped correctly around the barrel and held for the recommended time.
- **Excessive frizz:** The negative ion technology is designed to reduce frizz. Ensure hair is not overly wet when styling. Apply a small amount of anti-frizz product if necessary.

SPECIFICATIONS

Feature	Detail
Model Number	WT-638
Product Dimensions	3 x 3 x 11 inches
Item Weight	1.8 Pounds
Wattage	800 watts
Voltage	110 Volts
Power Source	Corded Electric
Hair Type Compatibility	All
Number of Speeds	3
Number of Settings	3 (Temperature)
Maximum Temperature	100 Degrees Celsius
Special Features	Detachable Attachments, Multiple Heat/Speed Settings, Negative Ion Technology
Material Type	Plastic

PARAMETER TABLE



Image: Detailed parameter table showing the dimensions of the main unit and each attachment.

WARRANTY AND SUPPORT

For warranty information or product support, please refer to the documentation included in your product packaging or contact Dryhsip customer service directly. Contact details can typically be found on the manufacturer's website or through your retailer.