

## Manuals+

[Q & A](#) | [Deep Search](#) | [Upload](#)

Manuals.plus /

› [Marcree](#) /

› Marcree 2-3 Gun Safe Instruction Manual (Model: gun safe-1)

## Marcree gun safe-1

# Marcree 2-3 Gun Safe Instruction Manual

Model: gun safe-1

Brand: Marcree

## IMPORTANT SAFETY INFORMATION

---

Please read all instructions carefully before operating your Marcree 2-3 Gun Safe. Failure to follow these instructions may result in injury or damage to the product.

- **Do not move the safe once loaded.** The safe's weight and stability may cause injury if moved improperly.
- Be aware that the **alarm mode may disturb others** or attract attention.
- Always keep emergency keys and passcodes in a secure location, *away from unauthorized individuals and children.*
- Ensure the safe is **securely mounted** to a wall or floor to prevent tipping and unauthorized removal.

## PRODUCT OVERVIEW

---

The Marcree 2-3 Gun Safe is designed to provide secure storage for firearms and valuables. It features multiple access methods and robust construction for enhanced security.



Image: Marcee 2-3 Gun Safe in a home environment.

## Key Features

- **Three Access Methods:** Digital keypad, backup physical keys, and an emergency battery box for power failure.
- **Silent & Alarm Modes:** Choose silent mode for discreet access or alarm mode for a loud alert upon tampering.
- **No Assembly Required:** The safe arrives ready for immediate use.
- **Durable Construction:** Made from 100% metal with a 60mm thick door and 4x20mm solid anti-pry bolts.
- **Removable Storage Shelf:** Customize interior space for various items.
- **Pistol Pouches:** Convenient storage for handguns on the inside of the door.
- **Internal LED Light:** Illuminates the interior for easy visibility in low-light conditions.
- **Mounting Capability:** Includes bolts for securing the safe to a floor or wall.

# Gun Safe **Major Upgrade** Enhanced Experience



Image: Detailed view of the safe's interior features.

## Included Components

- Marcree 2-3 Gun Safe Unit
- 4 x Bolts for mounting
- 2 x Emergency Keys
- 1 x Emergency Battery Box
- 1 x Instruction Manual



Image: Dimensions and included accessories.

## SETUP INSTRUCTIONS

---

### Unpacking

Carefully remove the safe from its packaging. Inspect for any damage. It is recommended to keep all packaging materials for 30 days in case of return or warranty claims.

### Battery Installation

Locate the battery compartment on the inside of the safe door. Install 4 AA alkaline batteries (not included) according to the polarity markings.

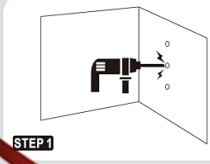
### Setting Your PIN Code

Follow these steps to set your personal PIN code for the digital keypad:

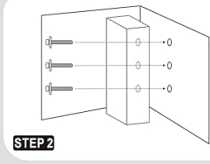
1. Open the gun safe door.
2. Press the red "SETTING BUTTON" located on the inside of the door (usually near the battery compartment).
3. When the keypad lights up, enter your new 3-8 digit PIN code.
4. Press '#' to confirm. A beep and light off confirms your PIN is set.



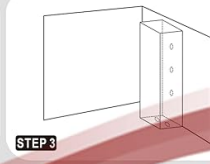
## Tip-Over Resistant for Enhanced Safety



STEP 1



STEP 2



STEP 3



To prevent the cabinet from tipping over or being stolen, we recommend securing the gun cabinet to the wall or floor



Image: Guide for securing the safe to a wall.

## OPERATING INSTRUCTIONS

### Opening with PIN Code

1. Touch the keypad to activate it.
2. Enter your programmed PIN code.
3. Press '#' to confirm.
4. Turn the handle to open the door within a few seconds.

### Opening with Emergency Key

In case of forgotten PIN or battery failure, use the emergency key.

1. Locate the keyhole cover (usually a small, removable plate) on the front of the safe.
2. Remove the cover.
3. Insert the emergency key and turn it to unlock.
4. Turn the handle to open the door.

### Using the Emergency Battery Box

If the internal batteries are dead and you don't have the emergency key readily available, you can use the external emergency battery box.

1. Insert 4 AA batteries into the emergency battery box.
2. Plug the emergency battery box cable into the external power port on the keypad (USB-C or similar).
3. The keypad will power on, allowing you to enter your PIN code.
4. Enter your PIN code and open the safe. Replace the internal batteries immediately.

### Silent & Alarm Modes

The safe features both silent and alarm modes for versatile security.

- **Silent Mode:** For discreet access, hold down the '#' key until the sound turns off. The keypad will still function, but without audible feedback.
- **Alarm Mode:** If an incorrect PIN is entered 3 consecutive times, a loud alarm (70dB) will sound. The alarm will also activate if the safe is tampered with or shaken (vibration sensor). To deactivate the alarm, enter the correct PIN code.

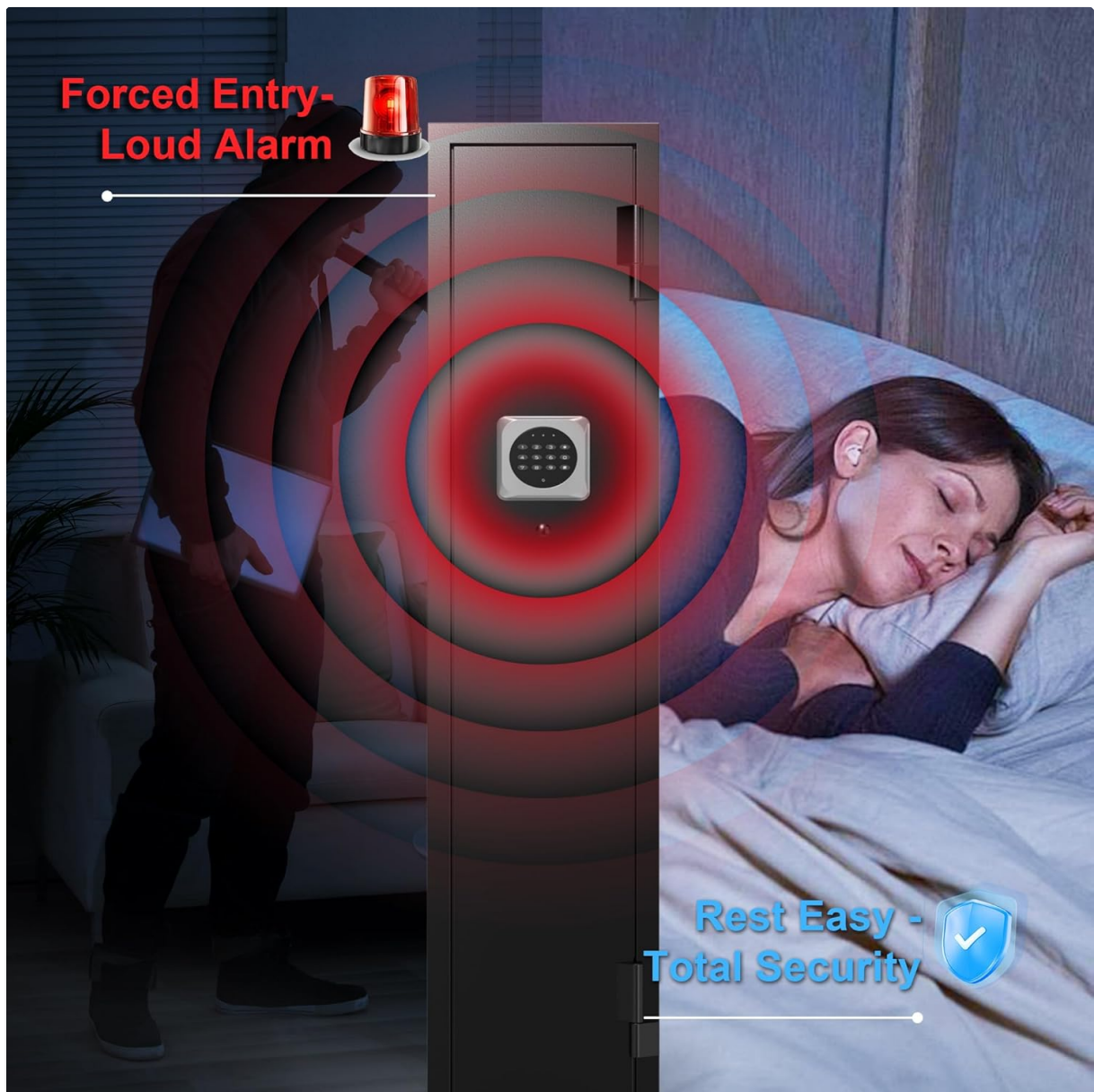


Image: Alarm system activation during a forced entry attempt.

## Adjusting Interior Racks and Shelves

The safe's interior is customizable. The rifle racks can be adjusted to accommodate different firearm lengths. The removable shelf can be positioned at various heights or removed entirely.

Your browser does not support the video tag.

Video: Demonstration of the gun safe's keypad and interior features.

## MAINTENANCE

- **Battery Replacement:** Replace the internal AA batteries every 6-12 months, or immediately if the low battery indicator appears.
- **Cleaning:** Wipe the exterior with a soft, damp cloth. Avoid abrasive cleaners.
- **Lock Mechanism:** Periodically check the locking bolts and hinges for smooth operation. Do not lubricate the lock mechanism unless specifically instructed by the manufacturer.
- **Key Storage:** Store emergency keys in a secure location outside the safe.

## TROUBLESHOOTING

### Keypad Not Responding

- Check if the internal batteries are dead. Replace them or use the emergency battery box.
- Ensure the battery compartment is closed properly.

### Cannot Open with PIN Code

- Verify you are entering the correct PIN code.
- Ensure the batteries are not dead.
- Try using the emergency key or emergency battery box.

### Alarm Sounds Unexpectedly

- An incorrect PIN may have been entered multiple times. Enter the correct PIN to disarm.
- The safe may have been shaken or tampered with.
- Check for loose items inside the safe that might cause vibrations.

### Door Does Not Close Properly

- Ensure no items are obstructing the door or locking bolts.
- Check if the safe is on a level surface.

## SPECIFICATIONS

Brand	Marcree
Model Name	gun safe-1
Product Dimensions	8.66"D x 9.84"W x 47.22"H
Material	100% Metal
Finish Type	Powder Coated
Lock Type	Electronic Combination Lock, Key
Special Features	Alarm System, Anti-Theft, Removable Shelf, Scratch Resistant, Silent mode
Mounting Type	Floor Mount
Number of Shelves	1 (removable)
Assembly Required	No

### Storage Capacity

Designed to hold 2-3 rifles and pistols, with adjustable racks and door pouches.

**ALL-STEEL CONSTRUCTION**  
**3 ANTI-PRY BOLTS**

**Built for Ultimate Security**

- 60mm Thick Door
- 4 x 20mm Solid Bolts
- 100% Steel Structure

60mm

20mm

*This gun safe is engineered to last.  
Your rifle safe is protected by superior strength.*

Image: All-steel construction and anti-pry bolts.

Your browser does not support the video tag.

Video: Overview of gun safe features and storage capacity.

## WARRANTY AND CUSTOMER SUPPORT

Marcree provides reliable US-based customer support. For any questions or technical assistance, please contact us. We aim to provide a detailed response within 24 hours.

Please refer to your purchase documentation for specific warranty details.

# SECURE YOUR HOME



## High-Strength Bolt

The gun safe's heavy-duty, tamper-resistant bolts are designed to withstand extreme loads and harsh conditions, effectively preventing unauthorized access.



## 24/7 Rapid Response

Our technical support team provides 24/7 rapid response to all emergencies.



## Dual Alarm System

Three wrong passwords or strong vibration trigger a 70dB alarm, audible all over the house for security.

## Mute Function

In an emergency, long-press "1" to mute the safe for silent, discreet opening.



## Your Flexibility: Silence or Alert Customer 5-Star Rated Product

We only carry highly-rated products by customers.

Image: Customer support and security features.