

GODOX IT32

Godox IT32 iFlash Camera Flash with X5C Trigger for Canon

Instruction Manual

1. INTRODUCTION

Thank you for choosing the Godox IT32 iFlash Camera Flash and X5C TTL Wireless Flash Trigger. This compact and versatile flash system is designed to enhance your photography with flexible on-camera and off-camera lighting solutions, especially for Canon cameras. This manual provides detailed instructions for setup, operation, and maintenance to ensure optimal performance.

2. PRODUCT OVERVIEW

The Godox IT32 is a powerful and portable camera flash that integrates seamlessly with the X5C TTL Wireless Flash Trigger. Its innovative design allows for quick transitions between on-camera and off-camera setups.

Key Components:

- **IT32 Flash Unit:** The main flash unit with a rotatable head, LED modeling light, and touchscreen interface.
- **X5C TTL Wireless Flash Trigger:** A detachable hot shoe trigger that enables wireless control and communication with the IT32 and other Godox X System flashes.
- **Magnetic Mounting:** Allows for quick and secure attachment/detachment of the IT32 from the X5C trigger.
- **Integrated Diffuser and Reflector:** Built-in tools for light modification.
- **USB-C Charging:** Convenient charging for the high-performance lithium battery.

COMPACT AND PORTABLE

iT32 is compact and portable, fitting easily into any camera bag or pocket. Its sleek design packs powerful features, effortlessly handling all kinds of shooting scenarios.

WHAT'S IN THE BOX



Image: The Godox iT32 iFlash Camera Flash and its included accessories, such as the X5C trigger, diffuser, color filters, charging cord, and storage bag.

3. SETUP

3.1 Attaching the X5C Trigger to the Camera

1. Slide the X5C TTL Wireless Flash Trigger onto your camera's hot shoe.
2. Lock the trigger in place using its locking mechanism.

3.2 Attaching the iT32 Flash Unit

1. Align the magnetic base of the iT32 flash unit with the top of the X5C trigger.
2. The units will magnetically connect, ensuring a secure attachment.

MAGNETIC MOUNTING, FAST AND SECURE



The magnetic interface between iT32 and X5 ensures a stable, one-click connection that's firm yet quick to detach. Compared with traditional locking mechanisms, it greatly speeds up setup while maintaining reliability, allowing photographers to switch modes fluidly and capture every moment with ease



DUAL IDENTITY: HOTSHOE & TRIGGER IN ONE



Image: Demonstrates the magnetic mounting system, showing the iT32 flash unit attaching to the X5C trigger on a camera hot shoe.

3.3 Powering On

Long-press the power button on the iT32 unit until the instruction appears. Swipe the screen or rotate the dial clockwise to power on the device.

Your browser does not support the video tag.

Video: A detailed operation tutorial for the Godox iT32 iFlash Camera Flash, covering power-on, touchscreen navigation, and basic settings.

4. OPERATING INSTRUCTIONS

4.1 Flash Operation (General)

The iT32 features a color touchscreen and a dial with buttons for intuitive control.

- **Touchscreen:** Swipe down to open the function menu, swipe up to go back.
- **Dial & Buttons:** Use the dial to rotate and select options. Press the SET button to confirm. The

power/flash button triggers a test flash.

4.2 On-Camera Mode

When the IT32 is mounted on the X5C trigger, it operates in on-camera mode.

- **M Mode (Manual):** Adjust flash power from 1/1 to 1/256. Tap the "+" or "-" icons for 0.3 increments, slide the bar for rapid changes, or turn the dial for fine-tuning.
- **TTL Mode:** Swipe down to switch to TTL mode. Drag the yellow slider to adjust flash exposure compensation.
- **Exposure Distance Indicator:** Adjust camera settings to display the correct flash distance range on the screen.

4.3 Off-Camera Mode

Separate the IT32 from the X5C to seamlessly switch to off-camera flash mode. The X5C remains on the camera to act as a transmitter.

- **Button Control on X5C:** Use the "+/M" and "-/D" buttons on the X5C trigger to increase/decrease exposure. Long-press "M" to switch between M and TTL modes. Long-press "-" to check the X5C's battery status (1 flash = low battery, 4 flashes = fully charged).

Your browser does not support the video tag.

Video: This video demonstrates the seamless transition between on-camera and off-camera flash modes, highlighting the IT32's detachable design and the X5C trigger's controls.

4.4 Godox 2.4GHz Wireless X System

The IT32 and X5C are part of the Godox 2.4GHz Wireless X System, allowing for versatile multi-flash setups.

- **Sender Mode:** Swipe down on the IT32 screen to enter Sender mode. Pair with other Godox 2.4GHz wireless flashes.
- **Receiver Mode:** Syncs wirelessly with XPro / X3 triggers. Tap to sync channel & ID quickly.
- **Wireless Settings:** Manually set the channel or ID for wireless communication.

EFFORTLESS MULTI-LIGHT SYNC

Equipped with a built-in 2.4GHz receiver in the iT32 and a 2.4GHz sender in the X5, the system ensures instant wireless communication without manual pairing. When used together, iT32 and X5 act as a master unit to trigger multiple Godox flashes simultaneously. When separated, the X5 can still control the iT32 and other flashes within the Godox 2.4GHz wireless X system.



Image: Illustrates the effortless multi-light sync capability of the iT32 and X5C within the Godox 2.4GHz Wireless X System, showing how they can trigger multiple flashes simultaneously.

4.5 Other Functions (Menu)

Access additional settings and features by navigating the menu.

- **Trigger Dist:** Adjust trigger distance (0-30m or 1-100m).
- **Sender Flash (Photocell):** S1 mode fires in sync with the master's first flash. S2 mode fires in sync with the master's second flash (only available in M mode).
- **TCM:** Convert TTL metering parameters to M mode.
- **Standby / Auto Off / Screen Standby:** Configure power-saving and display settings.
- **Screen Brightness Adjustment:** Adjust the display brightness.
- **Bootup Settings:** Customize startup behavior (e.g., unlock method).
- **Language:** Select your preferred language.
- **Factory Reset:** Restore default settings.
- **Device Info:** View device information.

4.6 Modeling Light

The iT32 features a built-in LED modeling light with stepless adjustable brightness. This allows you to preview lighting effects before shooting, provides auxiliary lighting for video, and assists with focusing in low-light conditions.

LED MODELING LAMP

The iT32 features a built-in LED modeling light, enabling preview of lighting effects before shooting, providing auxiliary lighting for video, and facilitating focusing in low-light environments





USB-C FAST CHARGING

The iT32 features a built-in high-performance lithium battery with a USB-C port, delivering efficient energy management for effortless extended shooting sessions

900mAh	100mAh
iT32: 7.4V/900mAh	X5: 3.8V/100mAh

Image: The iT32's LED modeling lamp in operation, demonstrating its adjustable brightness for previewing lighting effects and assisting in low-light focusing.

4.7 Sync Mode

The iT32 supports various sync modes for creative control:

- **Front-curtain Sync:** Standard flash synchronization.
- **High-speed Sync (HSS):** Allows flash synchronization at shutter speeds faster than the camera's native sync speed.
- **Rear-curtain Sync:** Flash fires just before the second curtain closes, creating motion trails behind the subject.

4.8 Flash Mode

The iT32 offers multiple flash modes:

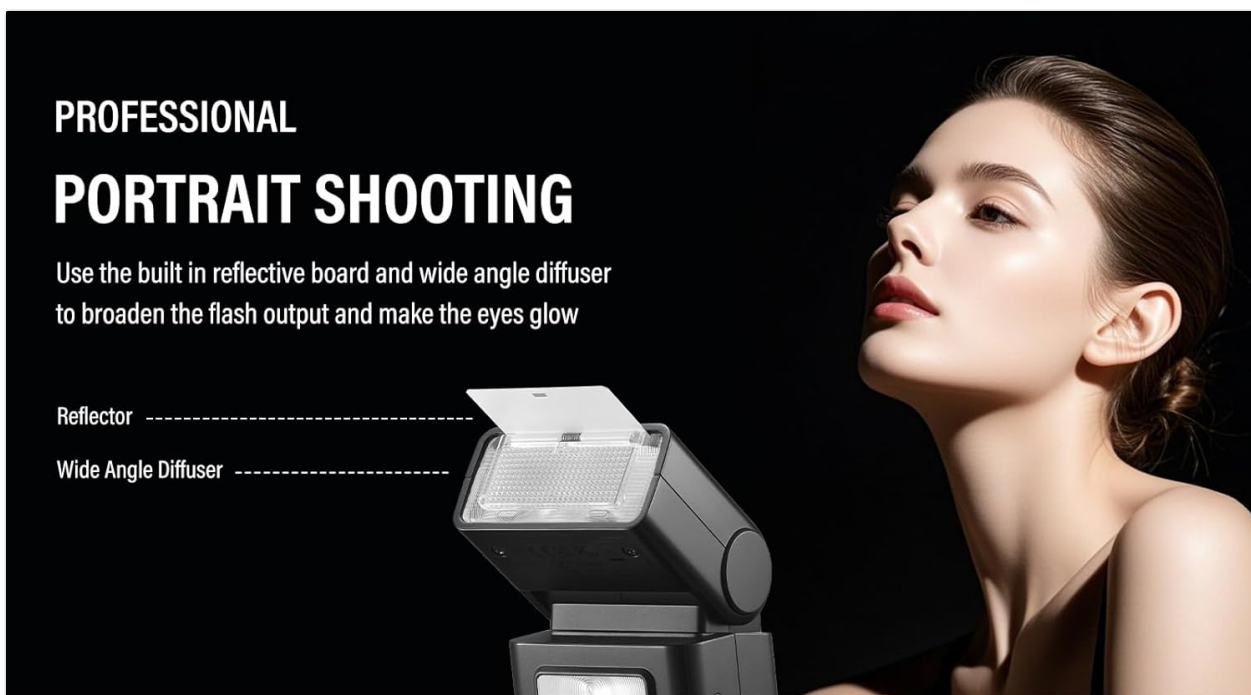
- **M (Manual):** Manually set flash power.

- **TTL (Through-The-Lens):** Automatic flash exposure based on camera metering.
- **Multi (Stroboscopic Flash):** Fires a series of rapid flashes during a single exposure to capture multiple movements of a subject. Adjust the number of flashes and frequency.

4.9 Magnetic Accessories

The IT32's magnetic head allows for instant attachment of various light modifiers.

- **Reflector & Diffuser:** The built-in reflector and wide-angle diffuser can be pulled out to soften light and broaden flash output.
- **Color Filters (MA02):** Magnetic color filters can be attached to achieve different creative lighting effects.



PROFESSIONAL PORTRAIT SHOOTING

Use the built in reflective board and wide angle diffuser to broaden the flash output and make the eyes glow

Reflector -----

Wide Angle Diffuser -----

SOFT LIGHT DIFFUSER

Use the diffuser to achieve a soft, even, and balanced light effect

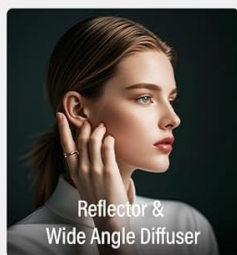
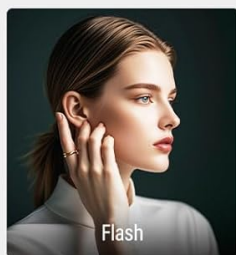


Image: The IT32 flash unit demonstrating the use of its built-in reflective board and wide-angle diffuser for soft, even lighting in portrait photography.

4.10 Type-C Charging

The IT32 incorporates a high-performance lithium battery with a USB-C port for efficient charging. The X5C trigger also has its own battery, and its status can be checked via the IT32 unit.

5. MAINTENANCE

- Keep the flash unit and trigger dry. Do not handle with wet hands.
- Clean the device with a soft, dry cloth. Avoid using harsh chemicals or abrasive materials.
- Store the device in a cool, dry place away from direct sunlight and extreme temperatures.
- Regularly check the battery and charging port for any signs of damage.

6. TROUBLESHOOTING

- **Flash not firing:** Ensure the unit is powered on, battery is charged, and it's securely mounted or properly synced in wireless mode. Check camera flash settings.
- **Incorrect exposure:** Adjust flash power in M mode or exposure compensation in TTL mode. Verify camera ISO, aperture, and shutter speed settings.
- **Wireless sync issues:** Confirm that the IT32 and X5C (or other triggers) are on the same channel and ID. Ensure no obstructions are blocking the wireless signal.
- **Screen unresponsive:** Try restarting the device. If the issue persists, perform a factory reset.

7. SPECIFICATIONS

Feature	Description
Brand	GODOX
Compatible Mounts	Compatible with Canon 80D, 90D, 7D, 6D, 70D, 750D, 760D, 5DMarkIV, EOS 1DX, 6DMarkII, 77D, 800D, 5DMarkIII, 5DMarkII, 60D, 7D MarkII, 600D, 50D, 30D, 40D, 500D, M5, M3, M50, R, RP, M6II, R5, 1500D, 3000D, R7, R6II, R50, R8, R5C, R10, R100, R5II, R3, 200DII and more.
Camera Flash Type	Hotshoe
Flash Sync Speed	1/8000s
Included Components	GD-ITCX1349 (IT32 Flash, X5C Trigger, Diffuser, Magnetic Base, Charging Cord, Color Filters, Storage Bag)

8. WARRANTY AND SUPPORT

This Godox product is covered by a manufacturer's warranty. For detailed warranty information, please refer to the warranty card included with your product or visit the official Godox website. For technical support, troubleshooting assistance, or service inquiries, please contact Godox customer service through their official channels.