

[Manuals.plus](#) /

> [HOGOKIDS](#) /

> HOGOKIDS HG1005 City Floatable Arctic Explorer Ship Building Set with LED Light - Instruction Manual

## HOGOKIDS HG1005

# HOGOKIDS HG1005 City Floatable Arctic Explorer Ship Building Set

Instruction Manual

## INTRODUCTION

---

Welcome to the HOGOKIDS HG1005 City Floatable Arctic Explorer Ship Building Set. This manual provides detailed instructions for assembling, operating, and maintaining your 542-piece building block kit. Please read through these instructions carefully to ensure a smooth and enjoyable building experience and to maximize the play value of your new set.

## PRODUCT OVERVIEW

---

The HOGOKIDS HG1005 set allows you to construct a detailed Arctic exploration vessel, complete with a floatable hull, LED lighting, and various accessories for immersive play. The set includes:

- A floatable research vessel with a functional crane.
- Built-in LED lighting to illuminate the ship and underwater elements.
- A helicopter for aerial scouting.
- A submarine for underwater exploration.
- A shark cage for deep-sea missions.
- Various ocean elements including sharks, cuttlefish, coral reefs, and hidden treasures.

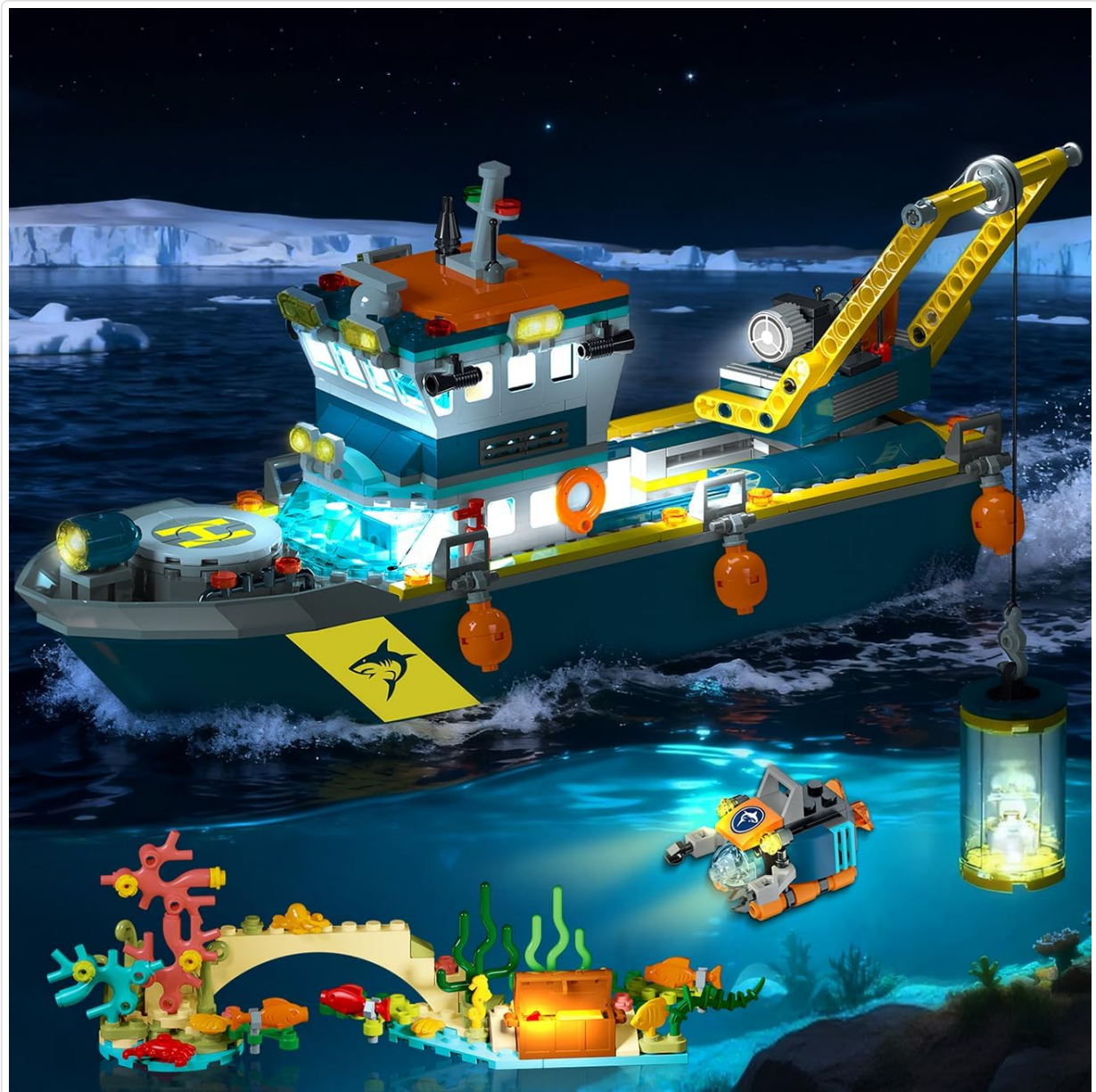


Figure 1: Fully assembled HOGOKIDS Arctic Explorer Ship with LED lighting and underwater accessories.

## SETUP AND ASSEMBLY

This building set contains 542 high-quality plastic bricks. A full-color instruction manual is included to guide you through each step of the assembly process. The main hull of the boat is a pre-formed, sealed plastic piece designed to float, significantly simplifying the initial build.

### Assembly Steps:

1. **Unpack Components:** Carefully open the packaging and sort the numbered bags of building bricks. Locate the instruction manual and the sheet of decorative stickers.
2. **Main Hull:** The large blue and grey hull is a single, solid piece. All subsequent building steps will attach to this base.
3. **Follow Instructions:** Refer to the included full-color instruction manual. Each step clearly indicates which pieces are needed and where they should be placed. New pieces for each step are highlighted for easy identification.
4. **Apply Stickers:** Use the provided decorative stickers to add details to the ship's control panels, radar, and other surfaces as indicated in the manual.
5. **LED Light Installation:** The LED light brick and associated wiring are included. Follow the manual's

specific instructions for integrating these into the ship's structure. The battery pack for the LED lights uses small watch batteries, which can be replaced by opening the screw compartment.



Figure 2: Children engaging in the assembly process, guided by the instruction manual.

## OPERATING INSTRUCTIONS

Once assembled, your HOGOKIDS Arctic Explorer Ship offers a variety of interactive features for imaginative play.

### Floating Feature:

The ship's hull is designed to float on water, allowing for realistic ocean adventures in a bathtub or shallow pool. Ensure all components are securely attached before placing the ship in water.



Figure 3: The Arctic Explorer Ship demonstrating its floatable design in water.

### **LED Lighting:**

Activate the built-in LED lights by pressing the switch on the battery pack. These lights illuminate the ship's interior and can be used to light up the underwater environment when the ship is floating, enhancing the exploration experience.

### **Functional Crane:**

The ship features a working crane. Use the crank to raise and lower the attached submarine or shark cage. This allows for simulated deployment and retrieval of exploration tools.



Figure 4: Illustrates the crane mechanism and modular design for quick play changes.

### Helicopter and Submarine:

The set includes a helicopter and a submarine. The helicopter can be placed on the ship's helipad for transport or used independently for aerial reconnaissance. The submarine can be deployed via the crane for underwater missions.



Figure 5: All expedition tools, including the helicopter and submarine, can be stowed on the ship.

### **Detailed Interior:**

The ship's cabin roof and upper deck are removable, revealing a detailed cockpit and an onboard science lab. These areas allow for imaginative role-playing scenarios, such as piloting the ship or conducting scientific experiments.

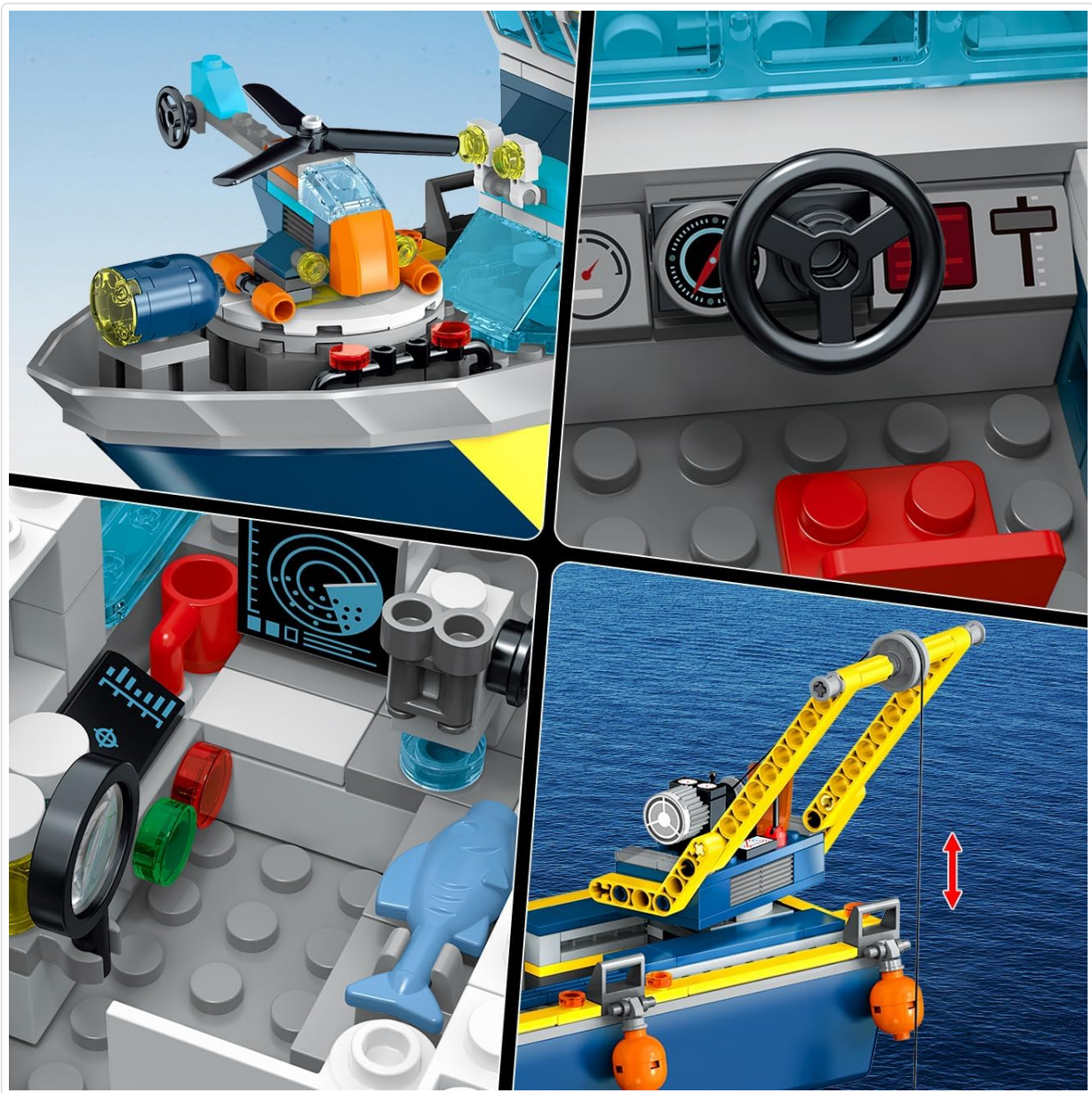


Figure 6: Detailed interior views of the ship's cockpit and science lab.

## MAINTENANCE

To ensure the longevity and cleanliness of your HOGOKIDS building set, follow these simple maintenance guidelines:

- **Cleaning:** Wipe down the plastic bricks and hull with a damp cloth. For stubborn dirt, use mild soap and water. Avoid harsh chemicals or abrasive cleaners.
- **Drying:** If the ship has been used in water, ensure all parts, especially the LED light components, are thoroughly dried before storage to prevent water damage.
- **Storage:** Store the building set in a cool, dry place away from direct sunlight to prevent discoloration or warping of plastic parts.
- **Battery Replacement:** If the LED lights dim or stop working, replace the watch batteries in the light brick's screw compartment.

## TROUBLESHOOTING

If you encounter any issues with your HOGOKIDS Arctic Explorer Ship, refer to the following common solutions:

- **Parts Not Fitting:** Ensure you are using the correct pieces for each step as indicated in the instruction manual. Apply firm, even pressure when connecting bricks.
- **LED Lights Not Working:** Check if the battery pack switch is in the 'ON' position. If lights are still off or dim, replace the watch batteries. Ensure the wires are securely connected.
- **Ship Not Floating Properly:** Verify that the hull is completely sealed and no water has entered the hollow compartment. Ensure all heavy components are evenly distributed.
- **Missing Pieces:** Double-check all packaging and bags. If a piece is genuinely missing, please contact HOGOKIDS customer support.

## SPECIFICATIONS

<b>Brand:</b>	HOGOKIDS
<b>Model Name:</b>	HG1005
<b>Number of Pieces:</b>	542
<b>Material:</b>	Plastic
<b>Boat Dimensions (L x W x H):</b>	13.6" (34.5 cm) x 3.8" (9.6 cm) x 6.5" (16.5 cm)
<b>Age Range:</b>	6+ Years Old
<b>Power Source (LED):</b>	Battery (replaceable watch batteries)
<b>Assembly Required:</b>	Yes



Figure 7: Key dimensions of the assembled Arctic Explorer Ship.

## SAFETY INFORMATION

**WARNING: CHOKING HAZARD - Small parts. Not for children under 3 years.**

This product contains small parts which may pose a choking hazard. Adult supervision is recommended during assembly and play, especially for younger children. Ensure all parts are securely connected to prevent detachment during play.

## WARRANTY AND SUPPORT

HOGOKIDS is committed to providing high-quality products. If you have any questions, concerns, or require assistance with your building set, please contact our customer service team. We strive to respond to all inquiries within 24 hours.

For support, please visit: [www.hogokidstoys.com](http://www.hogokidstoys.com)