



Manuals.plus /

› Heybly /

› Heybly HCT204SG Cat Tree Instruction Manual

## Heybly HCT204SG

# Heybly HCT204SG Cat Tree Instruction Manual

Model: HCT204SG

## 1. PRODUCT OVERVIEW

---

The Heybly HCT204SG Cat Tree is a multi-level cat tower designed to provide a comfortable and engaging environment for cats of all sizes. This 25.6-inch cat tree features a sturdy stair-style structure, offering various activity zones for your feline companions.

### Key Features:

- **Spacious Top Perch:** A roomy 19.7" × 15.7" top perch provides ample space for large cats to rest, sunbathe, or observe their surroundings.
- **Premium Dual-Level Condos:** Two soft, spacious compartments (11.8"L x 15.7"W x 11.8"H each) offer private retreats for cats to curl up and relax.
- **Sturdy Stair Structure:** Designed for easy climbing and enhanced stability, featuring an extended, widened base measuring approximately 19.6" × 22.8".
- **Multi-Use Design:** Includes a cozy cat basket, durable sisal scratching posts, and a dangling pom-pom toy to meet various needs for rest, play, and claw sharpening.
- **Materials:** Constructed from engineered wood, faux fur, and sisal for durability and comfort.



Image 1.1: The Heybly HCT204SG Cat Tree in Smoky Gray, showcasing its multi-level design and various features with cats utilizing the different areas.

## 2. SETUP AND ASSEMBLY

---

This cat tree is designed for quick and straightforward assembly. Please ensure all parts are present before beginning. A clear manual and simple tools are included to facilitate the process.

### Assembly Steps:

1. **Unpack and Verify:** Carefully unpack all components and compare them against the included parts list to ensure nothing is missing or damaged.
2. **Assemble Base:** Attach the main support posts to the base platform using the provided hardware. Ensure all connections are secure.
3. **Construct Condos:** Assemble the dual-layer condos according to the instructions, securing the walls and platforms.
4. **Attach Perches and Basket:** Secure the top perch and the cozy cat basket to their designated support posts.

5. **Install Scratching Posts:** Attach the sisal scratching posts to the structure.
6. **Final Touches:** Hang the pom-pom toy and ensure all screws are tightened.
7. **Wall Anchor (Optional but Recommended):** For enhanced stability, especially with energetic cats, use the included wall anchor kit to secure the cat tree to a nearby wall.



Image 2.1: A detailed dimensional drawing of the Heybly HCT204SG Cat Tree, illustrating its various components and overall measurements to aid in assembly.



## Tiered Design for Cats

Follows their natural climb-jump-lounge path for multi-level fun

Image 2.2: An illustration demonstrating the installation of the wall anchor for the cat tree, highlighting the wide base and wall attachment for improved stability.

### 3. OPERATING INSTRUCTIONS

The Heybly HCT204SG Cat Tree offers multiple areas for your cat's daily activities. Encourage your cat to explore and utilize the various features.

#### Usage Guidelines:

- **Top Perch:** Cats can use the elevated top perch for napping, observing their surroundings, or simply lounging in a high vantage point.
- **Condos:** The enclosed dual-level condos provide secure and private spaces for resting, sleeping, or hiding.
- **Sisal Scratching Posts:** Direct your cat to use the sisal-wrapped posts for scratching to maintain claw health and protect household furniture.
- **Cozy Basket:** The soft, suspended basket offers an additional comfortable spot for napping or relaxing.

- **Pom-Pom Toy:** The dangling pom-pom toy encourages playful interaction and exercise.



Image 3.1: Multiple cats engaging with different parts of the cat tree, including the top perch, condos, and scratching posts.



Image 3.2: A cat comfortably lounging on the spacious top perch, demonstrating the tiered design for multi-level fun.

## Scratch & Play Combo

Sisal for safety, toy for play  
ensuring your kitten's health and happiness

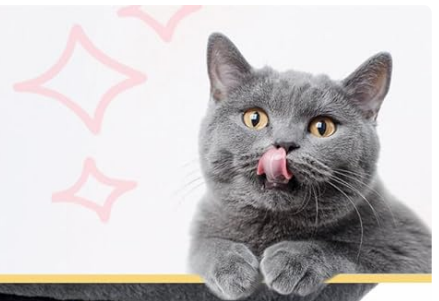
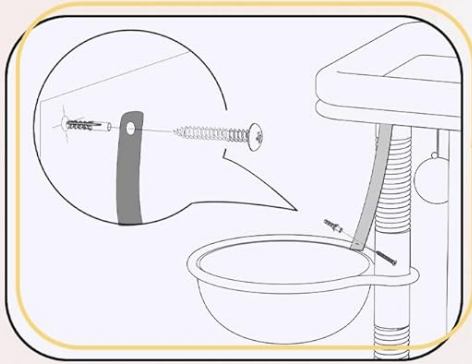


Image 3.3: Two cats utilizing the double-decker condos, highlighting the spacious hideaways for privacy and comfort.

## Stability & Safety

Wide base and included wall anchor prevent tipping, even with energetic cats



**50%**  
Larger Footprint  
for Enhanced Stability



Image 3.4: A kitten scratching a sisal post and playing with the dangling pom-pom toy, illustrating the scratch and play combo features.

## 4. MAINTENANCE

Regular maintenance will help prolong the life of your Heybly Cat Tree and keep it hygienic for your pets.

### Cleaning Instructions:

- **Product Care:** The faux fur material is recommended for **dry clean only**. Avoid using liquid cleaners or excessive moisture, which can damage the material and internal structure.
- **Spot Cleaning:** For small stains, gently blot with a damp cloth and mild pet-safe cleaner, then allow to air dry completely.
- **Vacuuming:** Regularly vacuum the cat tree to remove loose fur and dust.
- **Sisal Posts:** Inspect sisal posts for wear and tear. While durable, heavily used posts may fray over time.
- **Structural Check:** Periodically check all screws and connections to ensure they remain tight and secure. Tighten as needed.

## 5. TROUBLESHOOTING

---

If you encounter any issues with your Heybly Cat Tree, please refer to the following common solutions or contact customer support.

### Common Issues:

- **Instability:** Ensure all screws are fully tightened. If the tree still wobbles, verify that it is placed on a flat, even surface. Consider using the included wall anchor kit for added stability.
- **Missing Parts:** If any parts were missing upon delivery, please contact Heybly customer support immediately with your purchase details.
- **Damage During Assembly:** If a part is damaged during assembly, stop and contact customer support for assistance or replacement parts.
- **Cat Not Using Tree:** Place the cat tree in a preferred location for your cat (e.g., near a window). Use catnip or treats to encourage exploration.

## 6. SPECIFICATIONS

---

Feature	Detail
Model Number	HCT204SG
Product Dimensions (L x W x H)	19.69" x 22.83" x 25.59" (50cm x 58cm x 65cm)
Item Weight	7.9 Kilograms (17.42 Pounds)
Material	Engineered Wood, Faux Fur, Sisal
Color	Smoky Gray
Number of Levels	2
Breed Recommendation	All Breed Sizes
Specific Uses	Indoor
Mounting Type	Floor Mount (Wall anchor included for optional stability)
Special Features	Anti-Scratch (Sisal posts)

## 7. WARRANTY INFORMATION

---

Heybly products are manufactured to high-quality standards. For specific warranty details regarding your HCT204SG Cat Tree, please refer to the warranty card included with your purchase or visit the official Heybly website. Warranty coverage typically includes defects in materials and workmanship under normal use.

## 8. CUSTOMER SUPPORT

---

If you have any questions, require assistance with assembly, or need to report a missing or damaged part, please contact Heybly customer support:

- **Website:** Visit the official Heybly website for FAQs and contact forms.

- **Email:** Refer to your product packaging or warranty card for customer service email address.
- **Phone:** Check the Heybly website for available phone support options.

Please have your model number (HCT204SG) and purchase date ready when contacting support.