

## GODOX IT32+X5F

# Godox iT32 TTL HSS Flash for Fuji with X5-F Trigger Instruction Manual

Model: IT32+X5F

[Introduction](#)   [Safety Information](#)   [What's in the Box](#)   [Product Overview](#)   [Setup](#)   [Operating Modes](#)   [Wireless Operation](#)   [Features](#)   [Accessories](#)   [Firmware](#)  
[Upgrade](#)   [Specifications](#)   [Troubleshooting](#)   [Maintenance](#)   [Warranty & Support](#)

## 1. INTRODUCTION

Thank you for purchasing the Godox iT32 TTL HSS Flash with X5-F Trigger. This compact and versatile flash system is designed to provide advanced lighting solutions for Fuji camera users, offering features such as Ultra High-Speed Sync (HSS), Through-The-Lens (TTL) automatic exposure, a 2.4G wireless X system, and a magnetic modular design. This manual will guide you through the setup, operation, and maintenance of your new flash system to ensure optimal performance and creative control.

## 2. SAFETY INFORMATION

- Do not disassemble or modify this product. Repairs should only be performed by authorized service personnel.
- Keep this product dry. Do not handle with wet hands or immerse in water.
- Do not use the flash unit in the presence of flammable gases, chemicals, or other materials.
- The flash unit contains a built-in lithium battery. Do not expose to high temperatures or direct sunlight.
- Avoid direct eye exposure to the flash, especially at close range, as it may cause visual impairment.
- Keep out of reach of children.

## 3. WHAT'S IN THE BOX

Please check to ensure all items are included in your package:

- IT32 Light Unit x1
- X5-F Trigger x1

- USB-C Charging Cable x1
- Magnetic Mini Base x1
- Softbox x1
- Magnetic Color Filter (1/2 Orange) x1
- Magnetic Color Filter (1/1 Orange) x1
- Storage Pouch x1

## SYSTEM UPGRADE

To ensure optimal performance and compatibility between the iT32 and X5 systems, we recommend upgrading to the latest firmware if your version is below **V1.10**.

Before upgrading, download the G3 V1.1 or later upgrade software from the Godox official website. When upgrading the iT32, you can connect to a computer via the "Device Information" menu while powered on, or press and hold the SET button while powered off to enter upgrade mode. To upgrade the X5, assemble it onto the iT32 while the iT32 is powered off. Then, press and hold the iT32 power button to turn it on. The system will automatically detect and upgrade the X5 firmware.

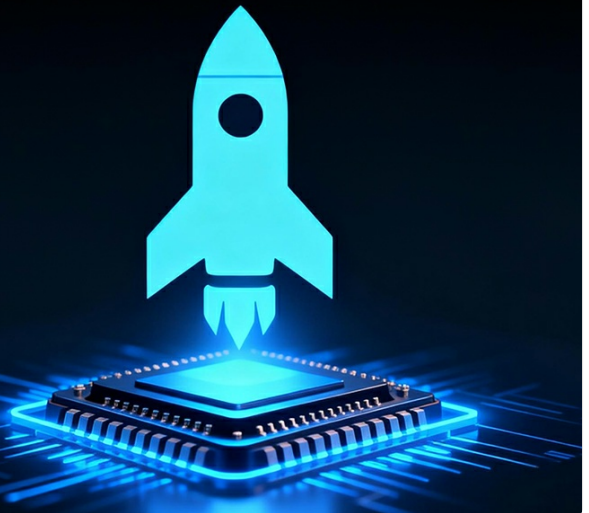


Image: All components included in the Godox iT32 and X5-F Flash Kit, laid out on a surface.

## 4. PRODUCT OVERVIEW

### 4.1. Godox iT32 Flash Unit

- **Flash Head:** Rotates 90° upward and 270° horizontally for flexible light direction.
- **Built-in Reflector and Diffuser:** Pull-out diffusion panel for soft light and catchlight reflector for eye highlights.
- **LED Modeling Lamp:** Adjustable brightness (1-10 levels) for previewing lighting effects and assisting focus.
- **Full-Color Touchscreen:** Intuitive interface for adjusting power settings, modes, and other functions.
- **USB-C Port:** For charging the built-in high-performance lithium battery.
- **Magnetic Attachment:** For quick connection to the X5 trigger and magnetic accessories.

# Godox



## iT32 & X5 F

### iFlash Camera Flash



Detachable



TTL & HSS



Rotating Head



Diffuser &  
Catchlight Panel



LED Modeling  
Lamp



Magnetic  
Attachment

Image: Front view of the Godox iT32 flash unit with icons indicating detachable design, TTL & HSS, rotating head, diffuser & catchlight panel, LED modeling lamp, and magnetic attachment.

## 4.2. Godox X5-F Trigger

- **Hot Shoe Mount:** Securely attaches to your Fuji camera's hot shoe.
- **2.4G Wireless Transmitter:** Enables wireless control of the iT32 flash and other Godox X System flashes.
- **Magnetic Connection:** Allows the iT32 flash unit to snap on and off quickly.
- **Control Buttons:** For adjusting exposure compensation and switching modes when used as an off-camera remote.

# Magnetic Split-Design

The iT32 and X5 connect via magnetic attachment, enabling quick detachment. No manual pairing is required to switch between on-camera and off-camera modes.



## One System, Built for All

The iT32 & X5 offer a universal solution for photographers working across different camera systems. Its interchangeable magnetic X5 hotshoe allows instant switching between brands by simply changing the X5 version.

Image: A photographer using the Godox iT32 flash attached to an X5 trigger on a camera, demonstrating the magnetic split-design.

## 5. SETUP

### 5.1. Charging the Battery

The Godox iT32 flash unit has a built-in lithium battery. Before first use, fully charge the battery using the provided USB-C cable.

1. Connect the USB-C cable to the USB-C port on the side of the iT32 flash unit.
2. Connect the other end of the USB-C cable to a USB power adapter (not included), power bank, or computer.
3. The battery indicator on the touchscreen will show charging status. A full charge typically takes approximately 1.5 hours.



Image: A close-up of the Godox iT32 flash unit connected to a USB-C charging cable, with the battery icon on the screen indicating charging.



## 5.2. Attaching the X5-F Trigger to Your Camera

1. Slide the X5-F trigger into your Fuji camera's hot shoe.
2. Rotate the locking wheel on the X5-F trigger clockwise to secure it in place.

## 5.3. Attaching the iT32 Flash Unit to the X5-F Trigger

The iT32 flash unit connects magnetically to the X5-F trigger.

1. Align the magnetic base of the iT32 flash unit with the top of the X5-F trigger.
2. The units will snap together magnetically. No manual pairing is required for on-camera use.



# TTL Smart Flash

The iT32 features TTL intelligent flash mode for effortless, accurate exposure, while also supporting precise manual exposure control within the range of 1/128 to 1/1.

☀ ±3 EV  
Flash Exposure Compensation



# Built-in reflector and diffuser

The iT32 comes with a diffusion panel that can be gently pulled out to soften light. It also features a built-in catchlight reflector to add eye highlights during bounce flash photography.



Image: A hand attaching the Godox iT32 flash unit to the X5-F trigger mounted on a Fuji camera, demonstrating the magnetic connection.

## 5.4. Powering On/Off

To power on the iT32 flash unit, long-press the power button until the screen activates. To power off, long-press the power button again.

Your browser does not support the video tag.

## 6. OPERATING MODES

The iT32 flash unit supports various operating modes for different lighting needs. You can switch between modes using the touchscreen or the dial/buttons.

### 6.1. TTL (Through-The-Lens) Mode

In TTL mode, the flash automatically adjusts its output to achieve correct exposure based on the camera's metering. This is ideal for fast-paced shooting where lighting conditions change frequently.

- To enter TTL mode, swipe down on the touchscreen and select the TTL icon.
- Adjust Flash Exposure Compensation (FEC) by dragging the yellow slider on the screen or using the dial.



Image: A woman sitting outdoors, with three example photos showing different flash exposure compensation settings in TTL mode.

### 6.2. Manual (M) Mode

In Manual mode, you manually set the flash output power from 1/1 (full power) to 1/256. This provides precise control over lighting for consistent results.

- To enter Manual mode, swipe down on the touchscreen and select the M icon.
- Adjust the flash power by tapping the "+" or "-" icons, sliding the power bar, or rotating the dial.

### 6.3. Multi (Stroboscopic) Mode

Multi mode allows the flash to fire a rapid series of flashes during a single exposure, creating stroboscopic effects.

- To enter Multi mode, swipe down on the touchscreen and select the Multi icon.
- Set the flash count (Times) and frequency (Hz) according to your desired effect.

## 7. WIRELESS OPERATION (2.4G WIRELESS X SYSTEM)

The Godox iT32 and X5-F trigger are part of the 2.4G Wireless X System, enabling seamless on-camera and off-



camera flash control.

## 7.1. On-Camera Mode

When the iT32 flash unit is magnetically attached to the X5-F trigger on your camera's hot shoe, it functions as an on-camera flash. All settings are controlled directly from the iT32's touchscreen.



Image: Diagram showing the Godox iT32 flash used both as an on-camera hot shoe flash and detached for wireless off-camera use with the X5 trigger.

## 7.2. Off-Camera Mode (Receiver & Sender)

When the iT32 flash unit is detached from the X5-F trigger, the X5-F automatically switches to sender mode, and the iT32 acts as a receiver. This allows for flexible off-camera lighting setups.

- **Sender Mode (X5-F Trigger):** Mount the X5-F trigger on your camera's hot shoe. It will transmit commands to the iT32 flash unit and other compatible Godox X System flashes.
- **Receiver Mode (iT32 Flash):** Place the iT32 flash unit off-camera, either on the magnetic mini base or a light stand. It will receive commands from the X5-F trigger.
- Ensure both the X5-F trigger and iT32 flash unit are set to the same channel and ID for proper communication.

# Effortless Multi-Light Sync

Equipped with a built-in 2.4GHz receiver in the iT32 and a 2.4GHz sender in the X5, the system ensures instant wireless communication without manual pairing. When used together, iT32 and X5 act as a master unit to trigger multiple Godox flashes simultaneously.

## 4 Groups

(M, A, B, C,)

## CH1-CH32

Channels

## OFF/01~99

ID

## 80m/262ft

Transmission Distance (approx.)  
(Max. 20m in separated triggering)

**Note:** The iT32 can trigger other flashes or be triggered by other flashes only when installed on the X5 trigger.



Image: A photographer using the Godox iT32 flash off-camera on a light stand, triggered wirelessly by an X5 trigger on the camera, demonstrating multi-light sync.

Your browser does not support the video tag.

Video: A demonstration of the Godox iT32 flash and X5 trigger in action, showcasing its detachable design and wireless capabilities for creative photography.

## 8. KEY FEATURES

### 8.1. Ultra HSS & TTL

The iT32 supports 1/80000s Ultra HSS and TTL auto exposure, allowing you to shoot with wide apertures in bright conditions without overexposure, perfect for portraits with shallow depth of field.

### 8.2. Magnetic Modular Design

The powerful magnetic connection snaps iT32 to X5-F instantly. Swap X5 trigger versions (Canon, Nikon, etc.) to use this flash across camera brands—save hundreds on extra flashes! This allows for instant switching between on-



camera and off-camera use. The interchangeable X5 trigger versions (e.g., X5-F for Fuji, X5-C for Canon, X5-N for Nikon) enable using the same iT32 flash across different camera brands by simply swapping the trigger.

## Magnetic Split-Design

The iT32 and X5 connect via magnetic attachment, enabling quick detachment. No manual pairing is required to switch between on-camera and off-camera modes.



## One System, Built for All

The iT32 & X5 offer a universal solution for photographers working across different camera systems. Its interchangeable magnetic X5 hotshoe allows instant switching between brands by simply changing the X5 version.

Image: A photographer using the Godox iT32 flash attached to an X5 trigger on a camera, demonstrating the magnetic split-design and interchangeable X5 versions for different camera brands.

### 8.3. All-Day Power & USB-C Rechargeable

Never miss a shot with 500 full-power flashes and a lightning-fast 1.5s recycle time. The USB-C port lets you recharge anywhere (power bank, laptop)—perfect for weddings, events, and on-the-go shoots. The iT32 features a high-performance built-in lithium battery, providing approximately 500 full-power flashes with a rapid 1.5s recycle time. The USB-C port allows convenient charging from various sources like power banks or laptops.

### 8.4. Rotating Head

90° upward/270° horizontal rotating head for perfect bounce angles. The flash head can rotate 90° upward and 270° horizontally, allowing you to bounce light off ceilings or walls for softer, more natural illumination.



Image: A diagram illustrating the vertical (90° upward) and horizontal (270° rotation) movement capabilities of the Godox iT32 flash head.

## 8.5. Built-in Reflector and Diffuser

The iT32 comes with a diffusion panel that can be gently pulled out to soften light. It also features a built-in catchlight reflector to add eye highlights during bounce flash photography. The iT32 includes a pull-out diffusion panel to soften harsh light and a catchlight reflector to add sparkle to subjects' eyes during bounce flash photography.



Image: A close-up of the Godox iT32 flash unit with its built-in diffusion panel and catchlight reflector extended.

## 8.6. LED Modeling Lamp

The iT32 features a built-in LED modeling light, enabling preview of lighting effects before shooting, providing auxiliary lighting for video, and facilitating focusing in low-light environments. A built-in LED modeling lamp with 1-10 adjustable brightness levels helps preview lighting effects before shooting and aids in focusing in low-light environments.



## LED Modeling Lamp

The iT32 features a built-in LED modeling light, enabling preview of lighting effects before shooting, providing auxiliary lighting for video, and facilitating focusing in low-light environments.

1-10  
Brightness Range



10% 100%



## Expand your accessories, unleash your creativity

The iT32 lamp head features a built-in magnetic plate, enabling quick replacement of magnetic color filters and other accessories for diverse creative applications.



1/1 CTO



1/2 CTO

Image: The Godox iT32 flash unit with its LED modeling lamp illuminated, showing different brightness levels and their effect on a subject.

## 8.7. Full-Color Touchscreen

The iT32 features a full-color touchscreen for intuitive operation, allowing you to effortlessly adjust power settings, select modes, and more. The iT32 features a responsive full-color touchscreen for intuitive control over settings, modes, and other functions.



## Intelligent Recognition and RealTime Display

The iT32 automatically identifies the attached X5 version, displaying key information such as model type, battery level, and charging status on its screen.



## Full-color touchscreen

The iT32 features a full-color touchscreen for intuitive operation, allowing you to effortlessly adjust power settings, select modes, and more.



Image: Close-up of the Godox iT32 flash's full-color touchscreen displaying various settings and controls, with a finger interacting with it.

## 9. ACCESSORIES

The iT32 flash system is compatible with a range of magnetic accessories to expand your creative lighting options.

- **Magnetic Color Filters:** Included CTO gels (1/2 and 1/1 orange) (for warm color correction) can be magnetically attached to the flash head for warm color correction. Other magnetic color filters (sold separately) are available.
- **Magnetic Softbox:** The included softbox (to soften harsh light) magnetically attaches to soften harsh light.
- **Magnetic Mini Base:** The included magnetic mini base (for stable off-camera mounting) provides a stable base for off-camera placement of the iT32 flash unit.

## Dual Identity: Hotshoe & Trigger in One

X5 serves both as a hotshoe mount and a wireless transmitter, enabling smooth transitions between on-camera and off-camera use. When attached to iT32, it functions as the hotshoe for on-camera shooting; once detached, it automatically switches to trigger mode, wirelessly controlling iT32 or other Godox Wireless X System flashes.

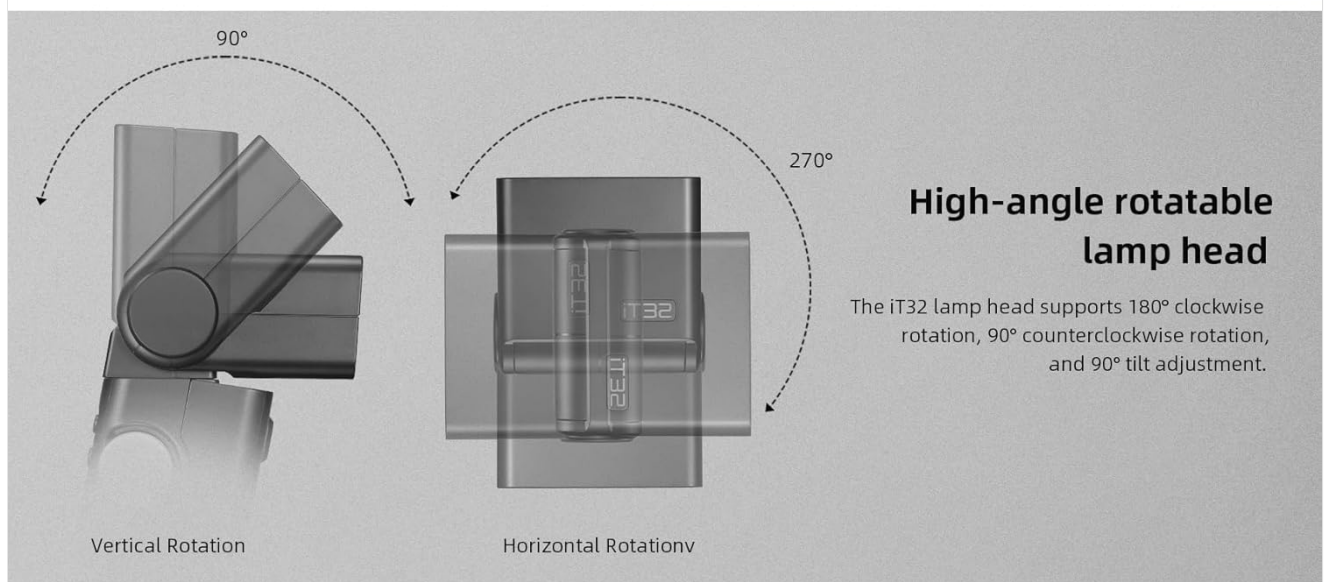


Image: The Godox iT32 flash unit with magnetic CTO gels (1/1 and 1/2 orange) being attached to the flash head, demonstrating quick accessory changes.

## 10. FIRMWARE UPGRADE

To ensure optimal performance and compatibility, it is recommended to upgrade your iT32 and X5 system to the latest firmware if your version is below V1.10.

1. Download the G3 V1.1 or later upgrade software from the official Godox website.
2. Connect the iT32 to a computer via the USB-C port.
3. While the iT32 is powered on, navigate to the "Device Information" menu. Alternatively, press and hold the SET button while powered off to enter upgrade mode.
4. To upgrade the X5 trigger, assemble it onto the iT32 while the iT32 is powered off. Then, press and hold the iT32 power button to turn it on. The system will automatically detect and upgrade the X5 firmware.



iFlash Camera Flash

# IT32 & X5 F

One System, Built for All



Image: A graphic illustrating the process of upgrading the firmware for the Godox iT32 and X5 system, showing a circuit board and a rocket icon.

## 11. SPECIFICATIONS

Brand	GODOX
Model Number	IT32+X5F
Package Dimensions	2.2 x 1.46 x 1.26 inches
Item Weight	6.8 ounces
Batteries	1 Nonstandard Battery (included)
Compatible Mountings	Fuji Camera
Camera Flash	Hotshoe
Flash Sync Speed	1/80000s (HSS)

## 12. TROUBLESHOOTING

- **Flash not firing:**
  - Ensure the flash unit and trigger are powered on and fully charged.
  - Verify the trigger is securely mounted on the camera's hot shoe.
  - Check that the flash and trigger are set to the same wireless channel and ID.
  - Confirm camera flash settings are enabled.
- **Inconsistent exposure:**
  - In TTL mode, check Flash Exposure Compensation (FEC) settings.
  - In Manual mode, adjust flash power output.
  - Ensure the flash head is correctly aimed or bounced.



- **Slow recycle time:**

- The battery may be low; recharge the flash unit.
- Reduce the flash power output for faster recycling.

- **Wireless connection issues:**

- Check for obstructions between the trigger and flash unit.
- Ensure both devices are within the 100m operating range.
- Scan for spare channels to avoid interference.

## 13. MAINTENANCE

---

- Clean the flash unit and trigger regularly with a soft, dry cloth.
- Avoid using harsh chemicals or abrasive cleaners.
- Store the unit in a cool, dry place away from direct sunlight and extreme temperatures.
- If not used for extended periods, charge the battery periodically to maintain its health.

## 14. WARRANTY AND SUPPORT

---

Godox products are covered by a limited warranty against defects in materials and workmanship. For specific warranty terms, technical support, or service inquiries, please refer to the warranty card included in your package or visit the official Godox website.

You can also visit the [GODOX Store on Amazon](#) for additional product information and support.