

DUMOS Conner Desk

DUMOS Conner Desk User Manual

Model: Conner Desk (B0G1B9SVCM)

Brand: DUMOS

1. INTRODUCTION

The DUMOS Conner Desk is designed to optimize small spaces, offering a functional and ergonomic workstation. This desk features a corner-fitting design, integrated LED lighting, a built-in power strip with AC outlets and USB ports, a monitor stand, and a sliding keyboard tray. This manual provides instructions for assembly, operation, maintenance, and troubleshooting to ensure proper use and longevity of your desk.



Image 1.1: The DUMOS Conner Desk in a typical setup, showcasing its corner design and LED lighting.

2. SAFETY INFORMATION

- This desk is designed for a maximum weight capacity of 132 lbs (60 kg). Do not exceed this limit to prevent damage or injury.
- Ensure the desk is properly assembled and all fasteners are securely tightened before use.
- Do not stand on the desk.
- Keep electrical components (power strip, LED lights) away from liquids.
- Periodically check all connections and fasteners to ensure they remain tight.

3. PACKAGE CONTENTS

Before assembly, verify that all components listed below are present and undamaged. If any parts are missing or damaged, please contact DUMOS customer support.

- Desk Panels (Main desktop, monitor stand, bottom shelf, keyboard tray)
 - Metal Frame Components (Legs, support bars)
 - LED Light Strip with Controller
 - Built-in Power Strip (2 AC outlets, 2 USB ports)
 - Hardware Kit (Screws, nuts, bolts, Allen wrench)
 - Headphone Hook
 - Adjustable Feet
-

4. SETUP AND ASSEMBLY INSTRUCTIONS

Assembly of the DUMOS Conner Desk typically requires two people. Follow the step-by-step instructions provided in the included assembly guide. Below are general guidelines:

1. **Unpack and Identify Parts:** Lay out all components on a clean, soft surface to prevent scratches. Refer to the parts list to ensure everything is present.
2. **Assemble the Frame:** Connect the metal frame components using the provided screws and Allen wrench. Do not fully tighten screws until the entire frame is assembled.
3. **Attach Desk Panels:** Secure the main desktop, monitor stand, and bottom shelf to the assembled frame. Ensure proper alignment before tightening all screws.
4. **Install Keyboard Tray:** Attach the sliding rails to the underside of the main desktop and then secure the keyboard tray.
5. **Install Power Strip:** Mount the built-in power strip into its designated slot on the desktop.
6. **Apply LED Light Strip:** Adhere the LED light strip to the underside of the monitor stand or main desktop as desired. Connect it to the controller.
7. **Attach Accessories:** Install the headphone hook and screw in the adjustable feet at the bottom of the desk legs.
8. **Final Tightening:** Once all components are in place and aligned, fully tighten all screws.



Image 4.1: The assembled DUMOS Conner Desk, ready for use in a home office environment.

5. OPERATING INSTRUCTIONS

5.1. Built-in Charging Station

The desk features a built-in power strip with 2 AC outlets (125V/12A) and 2 USB ports (5V/2.4A) for convenient device charging. Connect the desk's power cord to a wall outlet. You can then plug in your devices directly to the desk.



Image 5.1: Detail of the integrated charging station, showing AC and USB ports.

5.2. LED Lighting System

The integrated RGB LED light strip can be controlled via a button controller or a smartphone application. Refer to the LED light strip's specific instructions for pairing with the app. The system offers over 60,000 colors, various modes (music, mic, timing), and brightness adjustments to customize your workspace ambiance.



Image 5.2: The RGB LED light strip features, including control options and color variety.

5.3. Sliding Keyboard Tray

The retractable keyboard tray provides an ergonomic space for your keyboard and mouse, helping to maintain a comfortable posture during use. Simply slide the tray in or out as needed.



Sliding Keyboard Tray

SPACE-SAVING DESIGN



Extra Storage Shelf

Image 5.3: The sliding keyboard tray in use, providing space for a keyboard and mouse.

5.4. Ergonomic Monitor Stand

The elevated monitor stand helps raise your screen to eye level, promoting a healthy posture and reducing neck and shoulder strain. Utilize the space underneath for additional storage or to keep your desktop clear.

ERGONOMIC MONITOR STAND

Maintains healthy posture while providing additional storage space.

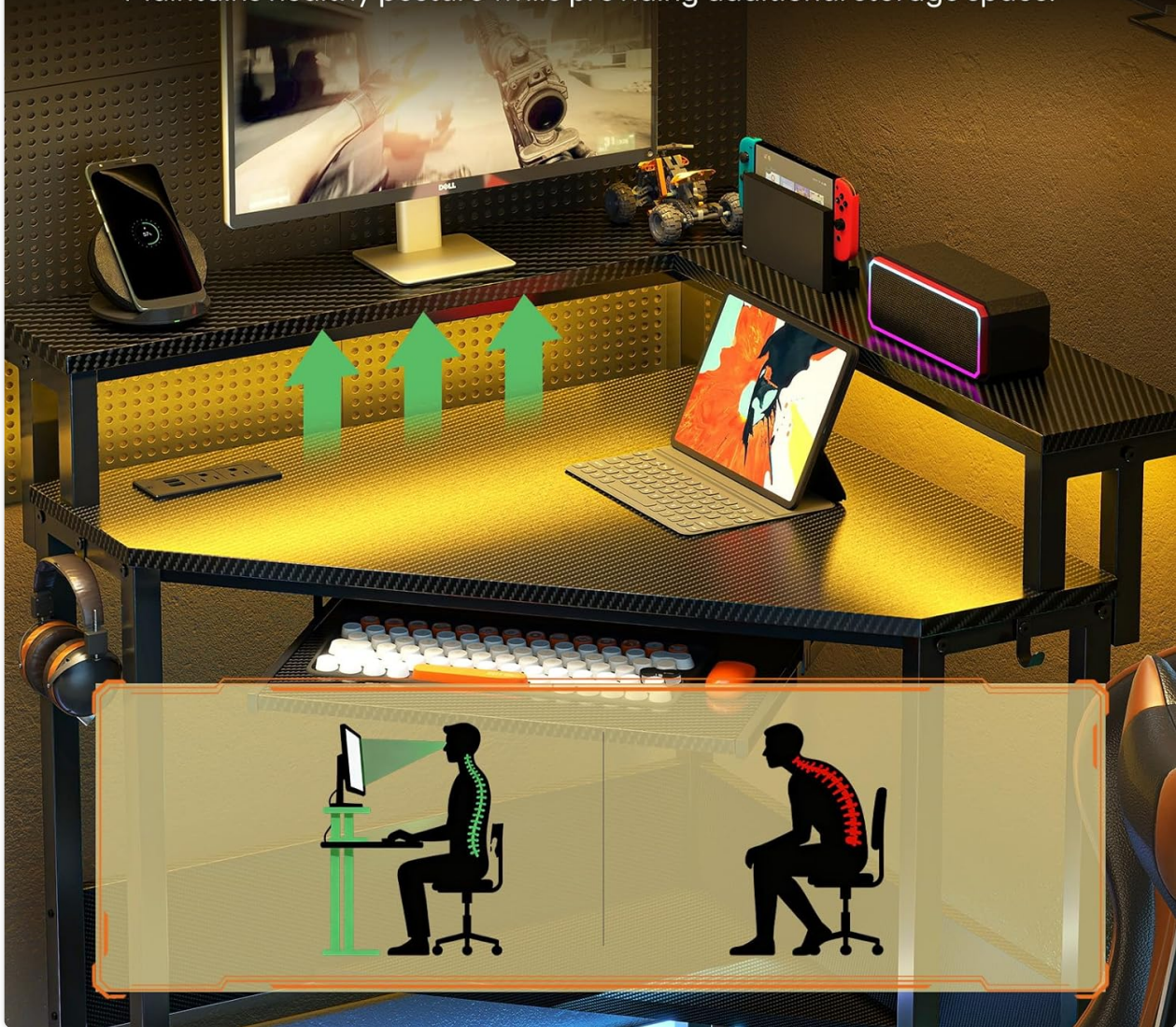


Image 5.4: The ergonomic monitor stand, illustrating its benefit for maintaining healthy posture.

5.5. Adjustable Feet and Headphone Hook

The desk is equipped with adjustable feet to ensure stability on uneven surfaces. Rotate the feet to level the desk. The convenient side hook provides a dedicated spot for headphones or other accessories.

PRODUCT DETAILS



Convenient Side Hook



Balance Adjustment Feet

Image 5.5: Details of the convenient side hook and balance adjustment feet.

6. MAINTENANCE

- **Cleaning:** Wipe the desk surfaces with a dry cloth. For stubborn marks, use a slightly damp cloth and mild cleaner, then dry immediately. Avoid abrasive cleaners or harsh chemicals.
- **Dusting:** Regularly dust the desk, especially around the power outlets and LED strip, to prevent accumulation.
- **Fastener Check:** Periodically inspect all screws and bolts to ensure they are tight. Re-tighten if necessary to maintain stability.
- **Cable Management:** Organize cables to prevent tangles and strain on connections.

7. TROUBLESHOOTING

- **Desk is Wobbly:**
 - Ensure all assembly screws are fully tightened.

- Adjust the leveling feet at the bottom of the desk legs to stabilize it on uneven floors.

• **LED Lights Not Working:**

- Check if the LED strip is properly connected to the controller and the power source.
- Ensure the power adapter for the LED lights is plugged into a working outlet.
- If using app control, ensure Bluetooth is enabled on your device and the app is correctly paired.

• **Power Outlets/USB Ports Not Functioning:**

- Verify that the desk's main power cord is securely plugged into a functional wall outlet.
- Check if the wall outlet itself is receiving power (test with another device).
- Avoid overloading the power strip with too many high-power devices.

• **Keyboard Tray Does Not Slide Smoothly:**

- Check for any obstructions in the sliding rails.
- Ensure the rails are properly installed and aligned.

• **Missing or Damaged Parts:**

- If you discover missing or damaged parts during assembly, do not proceed with assembly. Contact DUMOS customer support immediately for assistance.

8. SPECIFICATIONS

Feature	Detail
Product Name	DUMOS Conner Desk
Model Number	B0G1B9SVCM
Color	Carbon Black
Product Dimensions	80D x 80W x 87.6H Centimetres (31.5D x 31.5W x 34.6H Inches)
Item Weight	13.15 kg (29 lbs)
Weight Capacity	132 lbs (60 kg)
Material	Engineered Wood (Top), Metal (Base)
Finish Type	Laminated
Power Outlets	2 AC Outlets (125V/12A)
USB Ports	2 USB Ports (5V/2.4A)
LED Lights	RGB, Button & App Control, 60,000+ Colors
Included Components	Built-in Outlet, Built-in USB Port, Headphone Hook, Keyboard Tray, Monitor Stand
Assembly Required	Yes

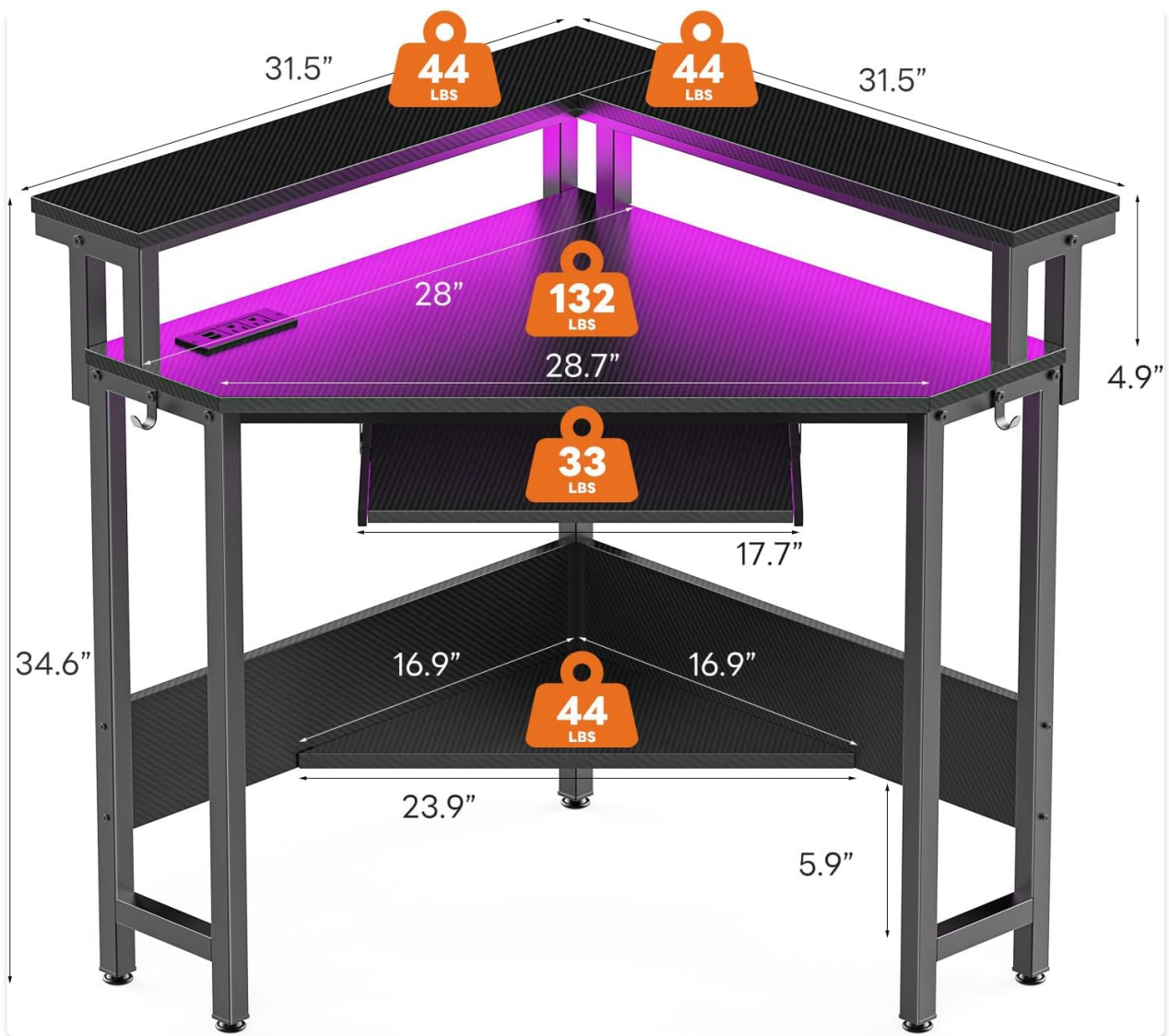


Image 8.1: Detailed dimensions and weight capacities of the DUMOS Conner Desk.

9. WARRANTY INFORMATION

DUMOS products are manufactured to high-quality standards. For specific warranty terms and conditions, please refer to the documentation included with your purchase or visit the official DUMOS website. Warranty coverage typically includes defects in materials and workmanship under normal use.

10. CUSTOMER SUPPORT

If you have any questions, require assistance with assembly, or need to report missing/damaged parts, please contact DUMOS customer support. Have your product model number (B0G1B9SVCM) and purchase information ready when contacting support.

Contact information can typically be found on the DUMOS official website or through your retailer's customer service portal.

