

## AUDERWIN 11042

# AUDERWIN 20-Inch Low Profile Fandelier Ceiling Fan with Light

MODEL: 11042

## 1. Introduction

Thank you for choosing the AUDERWIN 20-inch Low Profile Fandelier Ceiling Fan with Light. This manual provides essential information for the safe installation, operation, and maintenance of your new ceiling fan. Please read it thoroughly before installation and keep it for future reference.

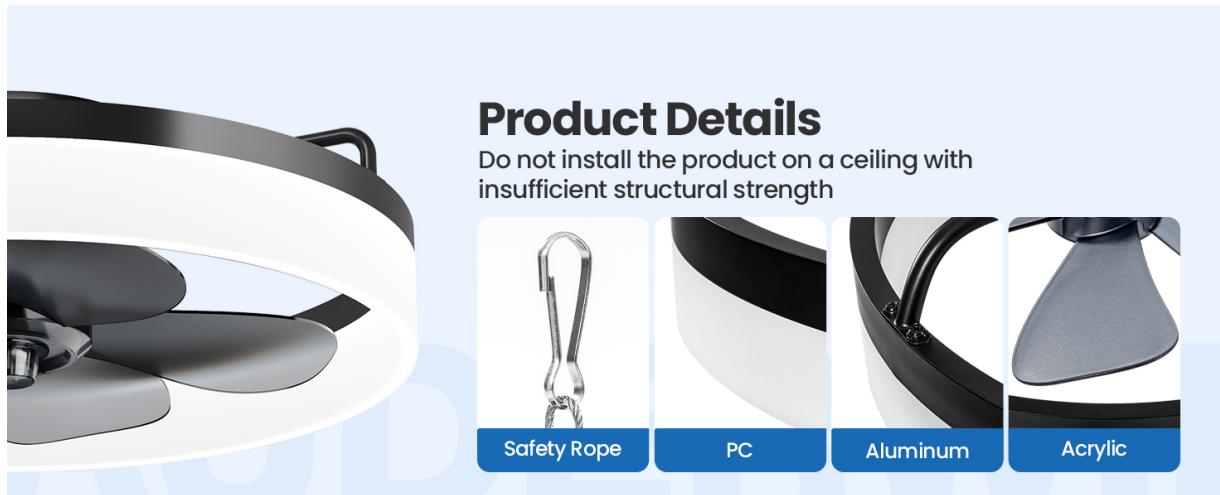


Image: The AUDERWIN fandelier ceiling fan seamlessly integrated into a contemporary living space with an open-plan kitchen.

## 2. Important Safety Information

To reduce the risk of electric shock, fire, or personal injury, always follow these basic safety precautions:

- Read all instructions carefully before beginning installation.
- Ensure the power is turned off at the circuit breaker before installation or maintenance.
- All wiring must be in accordance with national and local electrical codes. If you are unfamiliar with wiring, consult a qualified electrician.

- **WARNING:** Do not install the product on a ceiling with insufficient structural strength. The ceiling must be capable of supporting the fan's weight.
- Do not operate the fan with damaged wiring or if the fan is visibly damaged.
- Keep hands, hair, and clothing away from moving fan blades.

### 3. Package Contents

Carefully unpack your ceiling fan and inspect the contents to ensure all parts are present and undamaged. Refer to the list below and the accompanying image:

- Fandelier Ceiling Fan Unit
- Remote Controller
- Remote Controller Wall Plate
- Plastic Expansion Tubes (x4)
- Self-tapping Screws (x4)
- Screw (x1)
- Wire Nuts (x2)
- Glove (x1)
- Instruction Manual



Image: Detailed view of all components included in the package, along with a warning about ceiling structural strength.

## 4. Product Features

---

The AUDERWIN Fandelier Ceiling Fan is designed to provide optimal comfort and lighting with advanced features:

- **6 Speed Settings:** Offers 6 adjustable wind speeds for customized airflow.
- **Quiet Operation:** Equipped with a pure copper motor for smooth, powerful wind output with low noise levels, ensuring undisturbed sleep.
- **Adjustable LED & Memory Function:** 120V output voltage, 45W LED light with brightness adjustable from 10% to 100%. Features 3 adjustable color temperatures (3000K warm, 4500K natural, 6000K cool) and a memory function to recall your last setting.
- **Remote & App Control:** Control the fan and light independently via the included remote or a smart app (Bluetooth). Includes fan speeds, dimmable LED, and timer settings (1, 2, 4, or 8 hours).
- **Reversible Motor:** Two airflow modes for year-round comfort: downward airflow for summer cooling and upward airflow for circulating warm air in winter.
- **Optimal Coverage:** Recommended for rooms sized between 100 - 300 square feet.



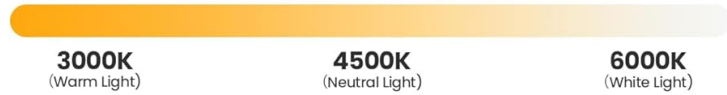
Image: Product dimensions and key features including wattage, memory function, fan speeds, and room coverage.

# 3 Color Temperatures

To Create Different Atmospheres



## Color temperature



## Brightness



Image: Demonstration of the three adjustable color temperatures (3000K, 4500K, 6000K) and stepless brightness adjustment.

**Soft Wind Whisper**  
**-Quiet for Undisturbed Sleep**  
Remote control mute < 30db

Speed Setting	Wind Type	Approximate Noise Level
1-2 SPEEDS	soft Wind	10db
3-4 SPEEDS	Natural Wind	25db
5-6 SPEEDS	Cool Wind	50db

**TIMER**  
2/4/8H

Image: Illustrates the quiet operation of the fan, with noise levels and different wind speed settings for various comfort levels.



Image: Visual explanation of the reversible motor function, providing forward airflow for summer and reverse for winter.

## 5. Installation Guide

The AUDERWIN Fandelier is designed for self-installation with detailed video instructions provided. Ensure you have all necessary tools and follow safety precautions.

### General Installation Steps:

1. **Turn off Power:** Before starting, ensure the power supply to the installation area is completely off at the circuit breaker.
2. **Mounting Bracket:** Securely attach the mounting bracket to the ceiling junction box. Ensure the ceiling can support the fan's weight.
3. **Wiring:** Connect the fan's electrical wires to the household wiring according to the provided wiring diagram in the full manual. Use the included wire nuts for secure connections.
4. **Attach Fan Body:** Carefully lift and attach the fan body to the mounting bracket.
5. **Secure Safety Rope:** Attach the safety rope to a secure structural point in the ceiling.
6. **Test Functionality:** Restore power and test the fan and light functions using the remote control.

For a detailed visual guide, please refer to the video instructions included with your purchase or available online.

Your browser does not support the video tag.

Video: An overview of the AUDERWIN fandelier, demonstrating its features and installation in a home setting. This video provides visual context for the product's operation and appearance.

## 6. Operating Instructions

Your AUDERWIN Fandelier can be controlled via the included remote or a dedicated smartphone app.

### Remote Control Functions:

- **Power ON/OFF:** Turns the fan and light on or off.
- **Fan Speed:** Adjusts between 6 wind speeds.
- **Light ON/OFF:** Controls the light independently.
- **Color Temperature:** Cycles through 3000K (warm), 4500K (natural), and 6000K (cool) light.
- **Brightness Adjustment:** Dims or brightens the light from 10% to 100%.
- **Timer:** Sets the fan to turn off after 1, 2, 4, or 8 hours.
- **Reverse Function:** Changes the direction of fan blade rotation for summer (downward) or winter (upward) airflow.

### App Control:

Download the "Fanlamp Pro" app from your smartphone's app store (Google Play or Apple Store). Follow the in-app instructions to pair your device and control all fan and light functions from your phone.

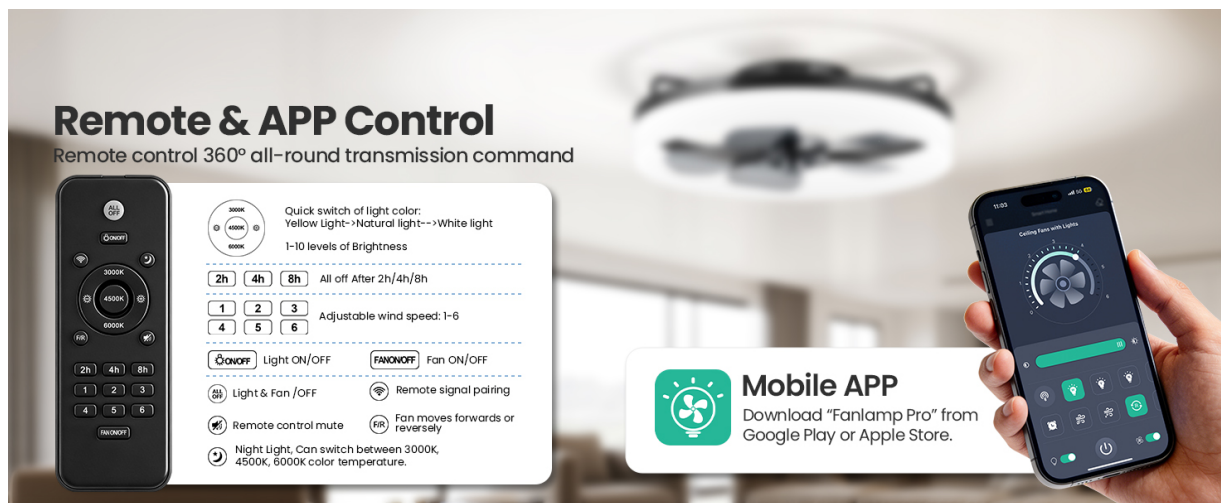


Image: Visual guide to the remote control and smartphone app interface for operating the fandelier.



Image: Demonstrates the timer settings and the different wind speed levels available for the fan.

## 7. Maintenance

---

Regular maintenance ensures optimal performance and longevity of your ceiling fan.

- **Cleaning:** Dust the fan blades and light fixture regularly with a soft, damp cloth. Do not use abrasive cleaners or solvents.
- **Blade Inspection:** Periodically check the fan blades for any cracks or damage.
- **Tighten Screws:** Over time, some screws may loosen. Periodically check and tighten all screws on the fan body and mounting bracket.
- **Light Source:** The LED light source is integrated and not user-replaceable. If the light fails, please contact customer support.

## 8. Troubleshooting

---

If you encounter any issues with your fan, refer to the following common problems and solutions:

Problem	Possible Cause	Solution
Fan does not start	No power supply; Loose wiring; Remote control battery low	Check circuit breaker; Verify wiring connections; Replace remote control battery.
Light does not work	No power supply; Loose wiring; LED failure	Check circuit breaker; Verify wiring connections; Contact customer support for LED failure.
Fan wobbles	Loose mounting screws; Unbalanced blades	Ensure all mounting screws are tight; Check for any debris on blades.
Remote control not working	Battery low/dead; Remote not paired	Replace battery; Refer to pairing instructions in the full manual.

If the problem persists after trying these solutions, please contact customer support.

## 9. Product Specifications

---

Feature	Specification
Brand	AUDERWIN
Model Number	11042
Size	20 inches
Electric Fan Design	Ceiling Fan (Fandelier)
Power Source	DC
Voltage	120 Volts
Wattage	45 watts
Number of Speeds	6

Feature	Specification
Light Color Temperatures	3000K (Warm), 4500K (Natural), 6000K (Cool)
Brightness	10% - 100% Dimmable
Controller Type	App Control, Remote Control
Motor Type	Brushless
Material	Acrylic, Acrylonitrile Butadiene Styrene, Aluminum
Room Type	Bedroom, Dining Room, Kitchen, Living Room, Study Room
Indoor/Outdoor Usage	Indoor
Installation Type	Self-Installation

## 10. Warranty and Support

---

AUDERWIN provides one year of technical support for this product. If you encounter any issues or have questions, please contact our customer service team. We are committed to responding within 24 hours.

### Contact Information:

- Email: [support@auderwin.com](mailto:support@auderwin.com) (Example)
- Phone: 1-800-XXX-XXXX (Example)
- Website: [www.auderwin.com](http://www.auderwin.com) (Example)