



[Manuals.plus](#) /

> [MELONFARM](#) /

> MELONFARM Small Grow Tent (MLFNGT212L) 24"x18"x28" Instruction Manual

MELONFARM MLFNGT212L

MELONFARM Small Grow Tent (MLFNGT212L) 24"x18"x28" Instruction Manual

Model: MLFNGT212L

INTRODUCTION

Thank you for choosing the MELONFARM Small Grow Tent. This manual provides essential information for the proper assembly, operation, and maintenance of your 24"x18"x28" grow tent. Designed for hydroponic indoor plant growing, this tent offers a controlled environment for optimal plant growth. Please read these instructions carefully before setup and retain them for future reference.

SETUP AND ASSEMBLY

The MELONFARM Small Grow Tent is designed for straightforward assembly without the need for specialized tools. Follow these steps to set up your grow tent:

1. **Unpack Components:** Carefully remove all parts from the packaging. Verify that all frame poles, connectors, and the tent fabric are present.
2. **Assemble Base Frame:** Connect the shortest poles to form the base rectangle using the corner connectors. Ensure all poles are pushed tightly into the connectors to prevent instability.
3. **Install Vertical Poles:** Attach the vertical poles to the base frame.
4. **Assemble Top Frame:** Connect the remaining shortest poles to form the top rectangle, then attach them to the vertical poles using the appropriate corner connectors.
5. **Drape Tent Fabric:** Carefully drape the tent fabric over the assembled frame. Ensure the zippers are aligned correctly with the front opening.
6. **Secure Fabric:** Pull the tent fabric down over the frame, ensuring a snug fit. Zip up the main door to fully enclose the frame.
7. **Install Support Bars:** Attach any included support bars across the top of the tent for hanging lights or other equipment.

Note: When stretching the tent fabric over the frame, ensure all poles are securely connected to avoid damaging the fabric.

24"X18"X28" Grow Tent

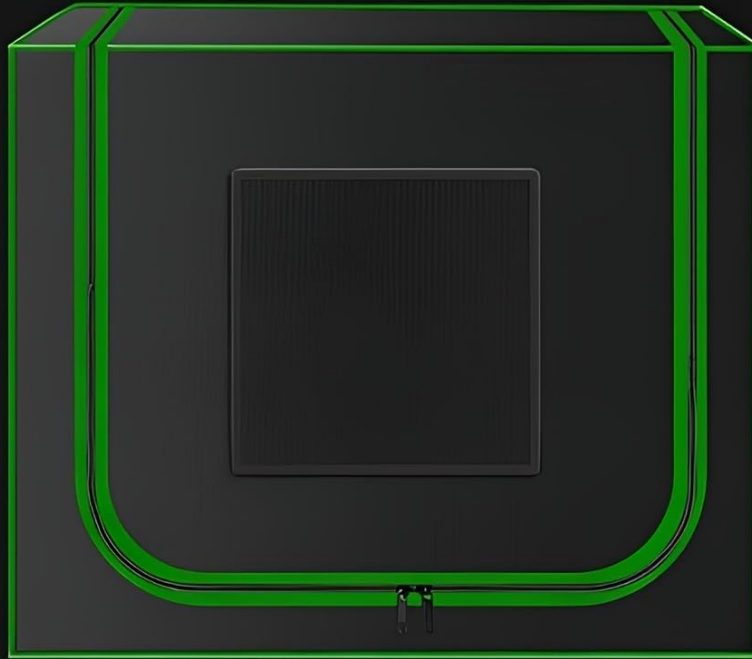
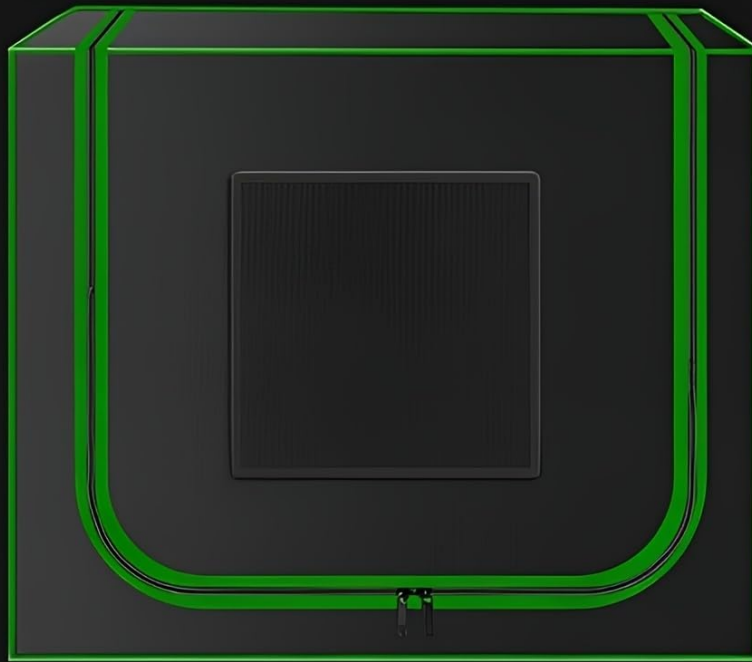


Image: Overview of MELONFARM Grow Tent components, highlighting dual cinching duct ports and heavy-duty zippers with double stitching for light protection.

24"X18"X28" Grow Tent



Mylar Floor Tray -Removable,
Easy to Clean



Ventilation Port - Built-in Mesh
Screen+Cloth to Shield Light

Image: MELONFARM Grow Tent features, including the removable Mylar floor tray and a ventilation port with a built-in mesh screen to shield light.

OPERATING YOUR GROW TENT

The MELONFARM Grow Tent provides an optimized environment for your plants. Proper operation involves managing light, temperature, and humidity.

Ventilation and Airflow

- Utilize the dual cinching duct ports for installing exhaust fans, carbon filters, and intake fans to manage airflow and odor.
- The ventilation window, equipped with a built-in mesh screen, allows for passive airflow while blocking unwanted light.
- Ensure adequate air circulation to maintain optimal temperature and humidity levels for plant health.

Light Management

- The highly reflective 600D diamond Mylar interior maximizes light efficiency, ensuring plants receive uniform illumination.
- The heavy-duty zippers and double-stitched canvas are designed to be light-proof, preventing light

leaks that can disrupt plant cycles.

- Use the transparent observation windows to monitor your plants without disturbing the internal environment.

Equipment Integration

The sturdy metal frame is designed to support various grow lights, fans, and other hydroponic equipment. Ensure that any suspended equipment is securely attached to the support bars.

MAINTENANCE

Regular maintenance ensures the longevity and optimal performance of your grow tent.

- **Cleaning the Interior:** The removable Mylar floor tray is easy to clean. Regularly remove and wipe it down to prevent accumulation of debris or spills. The Mylar interior can be gently wiped with a damp cloth and mild soap if necessary.
- **Zipper Care:** Periodically inspect zippers for smooth operation. If a zipper becomes stiff, apply a small amount of zipper lubricant or wax. Avoid forcing stuck zippers to prevent damage.
- **Frame Inspection:** Periodically check all frame connections to ensure they remain tight and secure.
- **Humidity Management:** While the tent is designed to withstand high humidity, prolonged exposure to excessive moisture can affect the reflective coating over time. Ensure proper ventilation to manage humidity levels.

TROUBLESHOOTING

This section addresses common issues you might encounter with your grow tent.

Problem	Possible Cause	Solution
Light leaks from zippers	Zipper not fully closed or fabric misalignment.	Ensure zippers are fully closed. Check for any fabric caught in the zipper path. The tent features double-stitched zippers for enhanced light protection.
Zipper gets stuck or comes off track	Lack of lubrication, excessive force, or minor misalignment.	Apply zipper lubricant. Gently work the zipper back onto the track. Avoid pulling forcefully.
Frame feels unstable or wobbly	Poles not fully inserted into connectors.	Disassemble and reassemble, ensuring all poles are pushed tightly into their respective connectors.
Reflective interior peeling or flaking	Prolonged high humidity or physical abrasion.	Ensure proper ventilation to control humidity. Avoid abrasive cleaning methods.

SPECIFICATIONS

Detailed specifications for the MELONFARM Small Grow Tent (MLFNGT212L):

Feature	Detail
---------	--------

Feature	Detail
Brand	MELONFARM
Model Number	MLFNGT212L
Product Dimensions	24"L x 18"W x 28"H
Outer Material	600D Oxford Cloth
Inner Material	Highly Reflective Diamond Mylar
Frame Material	Metal
Color	Black
Item Weight	6.14 pounds
Duct Openings	(x1) 4" Ducting Port
Mesh Vents	(x1) 5.9" x 14.1" (15x 36 cm)
Viewing Window	(x1) 11.8" x 11.8" (30 x 30 cm)

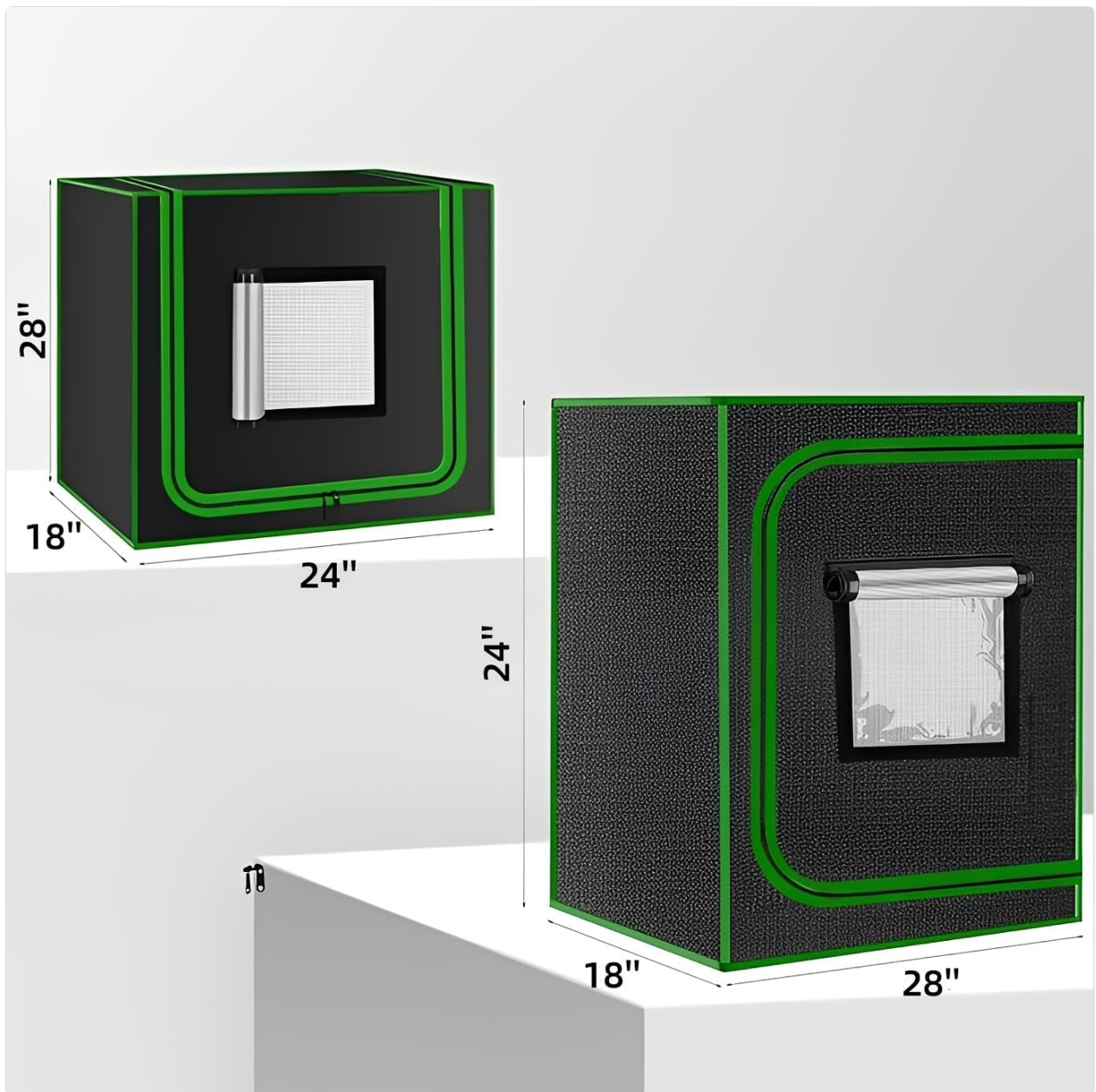


Image: Visual representation of the MELONFARM Grow Tent's dimensions: 24 inches long, 18 inches wide, and 28 inches high.

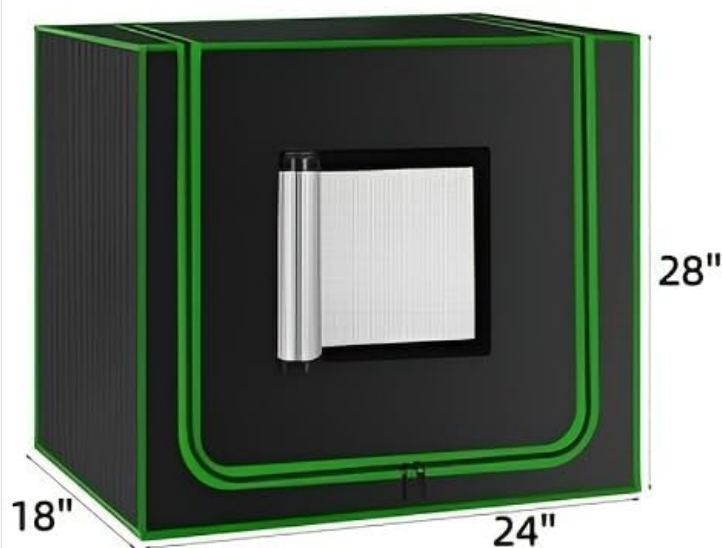
SPECIFICATIONS

MEASUREMENT | 24"x18"x28"

MATERIAL | 600D CANVAS

PLATE | ALUMINUM

INNER MATERIAL | MYLAR



DIMENSIONS

24"x18"x28"

DUCT OPENINGS

(x1)4" Ducting Ports

MESH VENTS

(x1)5.9"x 14.1"(15x 36 cm)

VIEWING WINDOW

(x1)11.8"x 11.8"(30 x 30 cm)

Image: Detailed specifications table for the MELONFARM Grow Tent, including measurements, materials, duct openings, mesh vents, and viewing window size.

WARRANTY INFORMATION

For specific warranty details regarding your MELONFARM Small Grow Tent, please refer to the warranty card included with your product or contact MELONFARM customer support directly. Warranty terms typically cover manufacturing defects and material flaws under normal use.

CUSTOMER SUPPORT

If you have any questions, require assistance with assembly, or encounter issues not covered in this manual, please contact MELONFARM customer support. Contact information can typically be found on the product packaging or the official MELONFARM website.

No official product videos were found for this model from the seller.