

## Amico DLT-E250E120L

# Amico 10-inch Shutter Exhaust Fan User Manual

Model: DLT-E250E120L

## 1. SAFETY INFORMATION

---

Please read all safety instructions carefully before installation and operation. Failure to follow these instructions may result in electric shock, fire, or serious injury.

- **Electrical Safety:** Ensure the power supply matches the fan's voltage (120V). Always disconnect power before installing, cleaning, or servicing the fan. Do not operate the fan with a damaged cord or plug.
- **Installation:** Install the fan in a location that provides adequate clearance for airflow and maintenance. Ensure the mounting surface is structurally sound to support the fan's weight. Keep hands and foreign objects away from moving fan blades.
- **Usage Environment:** This fan is designed for indoor and outdoor use in environments such as attics, garages, greenhouses, and chicken coops. Avoid exposing the control unit to direct water or extreme weather conditions.

## 2. PRODUCT OVERVIEW

---

The Amico 10-inch Shutter Exhaust Fan is designed for efficient ventilation with smart temperature and humidity control. It features an energy-efficient brushless DC motor and automatic gravity shutters.



Figure 2.1: Amico 10-inch Shutter Exhaust Fan with Remote Control.

### Key Features:

- **Smart Temperature & Humidity Control:** Automatically adjusts operation based on preset temperature and humidity levels.
- **8-Speed Auto Adjustment:** Fan speed intelligently increases with rising temperature or humidity.
- **High Airflow & Energy Efficiency:** Delivers 1068 CFM with a 13W Brushless DC motor.
- **Ultra-Quiet Operation:** Operates at a low noise level of 45 dB.
- **Draft-Blocking Gravity Shutters:** Automatic shutters open during operation and close tightly when off to prevent drafts, rain, and pests.
- **Easy Installation:** Plug-and-play design with a pre-wired 120V plug.



Efficient Brushless 13W DC Motor

# 13W

Saves **\$100+** Yearly

Up to 80% less energy than 60W AC fans.  
Based on US Avg. Electricity Rates

Figure 2.2: The fan is equipped with an efficient 13W Brushless DC Motor.



**Others** vs **Ours**

AC Motor	<b>Motor</b> ↑	<b>DC Brushless Motor</b>
60W High Cost	<b>Power</b> ↑	<b>13W Ultra-Saving</b>
Single Speed	<b>Speed</b> ↑	<b>8-Speed Control</b>

# 1068 CFM

Figure 2.3: Illustration of the fan's massive airflow, capable of refreshing a 2-car garage in under 4 minutes.



**Amico**

## Auto-Trigger Smart Ventilation

Auto-runs based on your custom temperature & humidity.

**13W** Brushless DC Motor

**1068CFM** Massive Airflow

**8** Speeds Smart Thermostat

**45 Db** Ultra-Quiet

Figure 2.4: The fan features heavy-duty aluminum blades and auto-closing gravity shutters to block rain, drafts, and pests.

### 3. INSTALLATION

The Amico Shutter Exhaust Fan is designed for quick and hassle-free installation. A paper template is included to

assist with cutting the correct opening size.

## Installation Steps:

1. **Mark & Cut:** Use the provided paper template to mark the desired installation location and cut the opening in the wall.
2. **Insert Fan Unit:** Carefully insert the fan unit into the prepared opening.
3. **Secure Fan:** Align the mounting holes and secure the fan to the wall using appropriate fasteners (not included).
4. **Plug & Play:** Connect the pre-wired 120V plug to a standard power outlet.

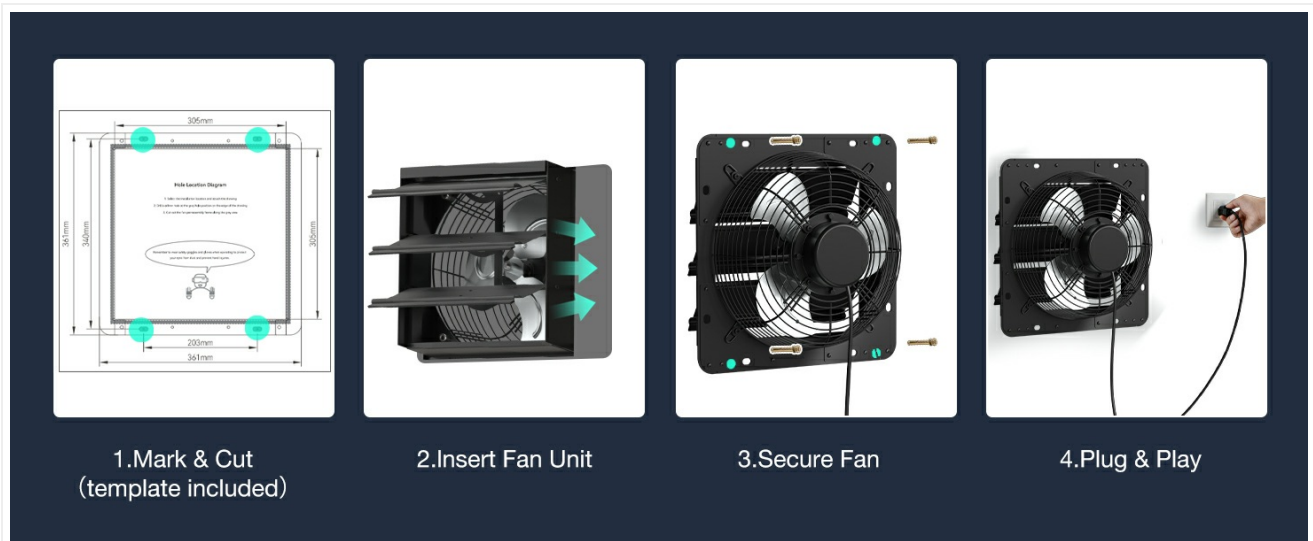


Figure 3.1: Visual guide for the four-step installation process: Mark & Cut, Insert Fan Unit, Secure Fan, and Plug & Play.

## Installation Video:

Video 3.1: This video demonstrates the installation process for the Amico Smart Shutter Exhaust Fan, providing a visual guide for setup.

## 4. OPERATION

The fan features a remote control for convenient operation and smart climate control capabilities.



Figure 4.1: The remote control unit for smart climate control, displaying temperature and humidity settings.

## Remote Control Functions:

- **Temperature & Humidity Settings:** Set desired high and low temperature and humidity thresholds. The fan will activate automatically when conditions exceed these settings.
- **Auto Mode:** In auto mode, the fan intelligently adjusts its speed. For every 1.8°F (1°C) temperature rise or 5% humidity increase, the fan speed increases by one level.
- **Manual Mode:** Switch to manual mode to select one of the 8 available fan speeds directly.
- **24-Hour Timer:** Program the fan to operate for specific durations within a 24-hour cycle.
- **Long-Range Control:** The remote operates up to 50 feet away and has a battery life of up to one year.

## Operation Videos:

Video 4.1: This video illustrates the automatic ventilation features with temperature and humidity control, showing how the fan responds to environmental changes.

Video 4.2: A detailed guide on how to use the control box, including setting thermostat and humidity parameters for optimal fan operation.

## 5. MAINTENANCE

---

Regular maintenance ensures optimal performance and longevity of your Amico exhaust fan.

- **Cleaning Fan Blades:** Periodically disconnect power and gently wipe the fan blades with a soft, damp cloth to remove dust and debris. Ensure blades are dry before restoring power.
- **Shutter Inspection:** Check the automatic gravity shutters for any obstructions or stiffness. Ensure they open and close smoothly. Clean any dirt or debris that may hinder their movement.
- **Power Cord Inspection:** Regularly inspect the power cord for any signs of damage, fraying, or wear. If damage is found, discontinue use and contact customer support.

## 6. TROUBLESHOOTING

---

If you encounter issues with your Amico exhaust fan, refer to the following common problems and solutions:

Problem	Possible Cause	Solution
Fan does not turn on.	No power supply; Remote control battery low or dead; Fan in off mode.	Check if the fan is plugged in and the outlet has power. Replace remote control batteries. Ensure the fan is set to an active mode (Auto or Manual).
Shutters do not open or close properly.	Obstruction in shutter mechanism; Dirt or debris; Damaged shutters.	Disconnect power and inspect shutters for obstructions. Clean any dirt or debris. If damaged, contact customer support.
Remote control is unresponsive.	Remote control battery low or dead; Out of range; Interference.	Replace remote control batteries. Ensure the remote is within the 50ft operating range. Reduce potential interference from other electronic devices.

Problem	Possible Cause	Solution
Fan speed does not adjust automatically.	Fan not in Auto mode; Temperature/humidity thresholds not met; Sensor probe issue.	Ensure the fan is set to Auto mode. Verify that the current temperature or humidity has exceeded the set thresholds. Check the sensor probe connection and placement.

## 7. SPECIFICATIONS

Detailed technical specifications for the Amico 10-inch Shutter Exhaust Fan.

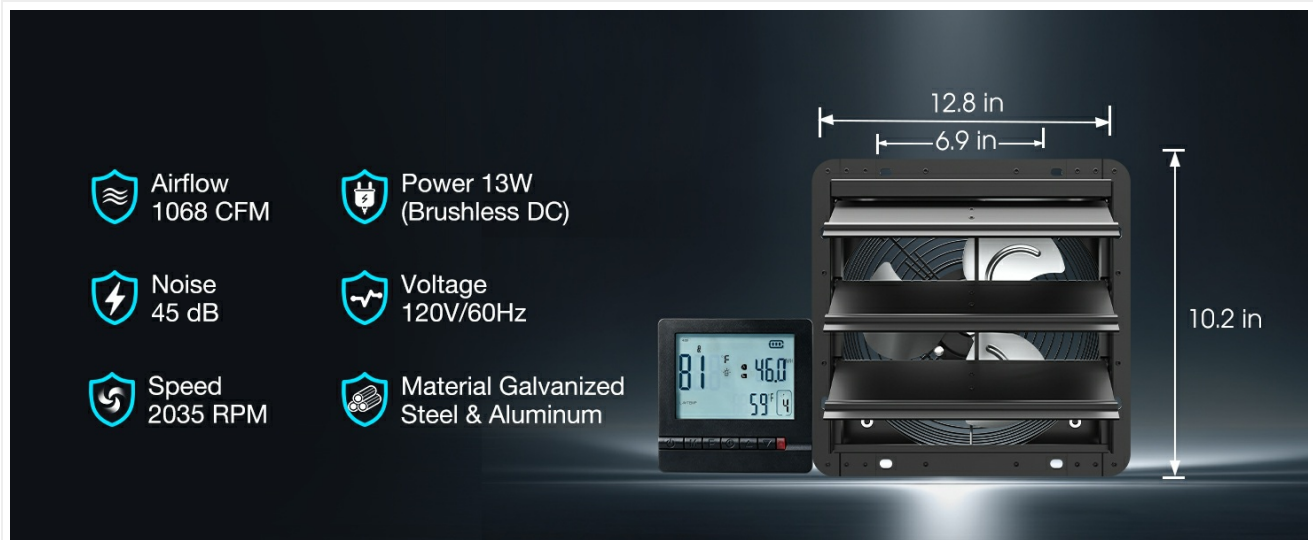


Figure 7.1: Product dimensions and key specifications of the Amico 10-inch Shutter Exhaust Fan.

Specification	Detail
Brand	Amico
Model Name	DLT-E250E120L
Size	10 inch
Product Dimensions	6.3"D x 10"W x 10"H
Air Flow Capacity	1068 Cubic Feet Per Minute (CFM)
Speed	2035 RPM
Number of Speeds	8
Wattage	13 watts
Voltage	120 Volts
Noise Level	45 Decibels (dB)
Motor Type	Brushless DC Motor

Specification	Detail
Control Method	Remote Control (Temperature & Humidity)
Material	Alloy Steel, Aluminum
Indoor/Outdoor Usage	Indoor, Outdoor
Certification	FCC Certified

## 8. WARRANTY AND SUPPORT

Amico stands behind the quality of its products.

- **3-Year Product Support:** This exhaust fan comes with a 3-year product support period, ensuring assistance with any manufacturing defects or performance issues.
- **Customer Support:** For installation assistance, setup guidance, or any other inquiries, please contact Amico customer support, available 24/7.



Figure 8.1: Amico offers a 3-year warranty, reflecting confidence in product durability and performance.