

[Manuals.plus](#) /

> [TROPOW](#) /

> TROPOW 40 Quart 12V Portable Refrigerator with Ice Maker (Model vcHG-5MNb8foiud4kl9wWQBJ2Q) User Manual

## TROPOW vcHG-5MNb8foiud4kl9wWQBJ2Q

# TROPOW 40 Quart 12V Portable Refrigerator with Ice Maker User Manual

Model: vcHG-5MNb8foiud4kl9wWQBJ2Q

## 1. IMPORTANT SAFETY INFORMATION

---

Please read all instructions carefully before using your TROPOW portable refrigerator. Retain this manual for future reference.

- Ensure the unit is placed on a stable, level surface to prevent tipping.
- Do not block ventilation openings. Maintain at least 10 cm (4 inches) of space around the unit for proper airflow.
- Avoid exposing the unit to direct sunlight or heat sources.
- Do not immerse the unit in water or expose it to rain.
- Use only the provided power cords and adapters. Ensure the power source matches the voltage requirements (12V/24V DC or 100-240V AC).
- Unplug the unit from the power source before cleaning or performing any maintenance.
- Do not operate the unit if the power cord is damaged. Contact customer support for assistance.
- Keep children away from the unit, especially during operation.
- Do not store explosive substances such as aerosol cans with a flammable propellant in this appliance.

## 2. PRODUCT OVERVIEW

---

The TROPOW 40 Quart (38L) Portable Refrigerator with Ice Maker is designed for versatile cooling and freezing needs, ideal for travel, camping, and home use. It features a powerful compressor for rapid cooling and a built-in ice maker for convenience.

### Key Features:

- **40 Quart (38L) Capacity:** Ample space for beverages, snacks, and perishables.
- **Dual-Zone Temperature Management:** Allows independent temperature settings for refrigeration and freezing.
- **Integrated Ice Maker:** Produces ice cubes quickly and efficiently.

- **Multi-Power Compatibility:** Operates on 12V/24V DC and 100-240V AC.
- **3-Stage Battery Protection:** Prevents vehicle battery drain.
- **Quiet Operation:** High-efficiency compressor runs at less than 45 dB.
- **Portable Design:** Equipped with wheels, a retractable handle, and a bottle opener.



**52 Cans**  
330ML Coal



**38 Bottles**  
550ML Water



**20 Bottles**  
750ML Red Wine

**40 QT**  
(38L) Refrigerator

**1.27QT**  
Can hold 1.2L of ice cubes

Image: The TROPOW portable refrigerator, highlighting its dimensions (18.9" H, 16.5" W, 28.7" L) and capacities: 40 QT (38L) refrigerator section and 1.27 QT (1.2L) ice cube capacity. It also shows storage for 52 cans, 38 bottles of water, or 20 bottles of red wine.



Image: An open view of the TROPOW portable refrigerator, clearly showing the main refrigerator compartment filled with fruits and bottled drinks, and the separate ice maker compartment with ice cubes. Labels indicate 'Refrigerator (Fridge/Freezer)' and 'Ice Maker (Ice Cubes)'.

### 3. SETUP INSTRUCTIONS

---

#### 3.1 Unpacking and Placement

- Carefully remove the refrigerator from its packaging.
- Place the unit on a firm, level surface. Ensure there is adequate ventilation around all sides of the refrigerator (at least 10 cm or 4 inches).
- Allow the unit to stand upright for at least 6 hours before connecting to power, especially if it was transported horizontally. This allows the compressor oil to settle.

#### 3.2 Power Connection

Your TROPOW portable refrigerator supports multiple power input options:



Image: A diagram illustrating five different power supply methods for the portable refrigerator: 1) 110-240V AC Home Power with AC Power Cord, 2) 12-24V DC Car Power with DC Power Cord, 3) Battery (not included), 4) Solar Panel (direct connection), and 5) Solar Panel to Power Station then to the refrigerator via AC or DC.

1. **AC Power (100-240V):** Connect the AC power cord to the refrigerator's AC input port, then plug it into a standard wall outlet.
2. **DC Power (12V/24V):** Connect the DC power cord to the refrigerator's DC input port, then plug it into your vehicle's cigarette lighter socket or a 12V/24V power outlet.
3. **Optional Battery Power:** If you have a compatible external battery (not included), insert it into the designated battery compartment. Ensure the battery is charged before use.
4. **Solar Panel (Optional):** The unit can be powered directly by a solar panel or indirectly via a power station charged by a solar panel. Ensure the solar panel output matches the refrigerator's input requirements.

### 3.3 Initial Cleaning

Before first use, wipe the interior and exterior surfaces with a damp cloth and mild detergent. Dry thoroughly. Do not use abrasive cleaners.

## 4. OPERATING INSTRUCTIONS

### 4.1 Control Panel Overview

The control panel is located on the top of the unit, providing access to all functions.



Image: A close-up view of the control panel with buttons for power, settings, temperature adjustment (+/-), and ice maker functions.

## 4.2 Power On/Off and Temperature Setting

- **Power On:** Press the **Power button** ( ) to turn the unit on. The display will show the current temperature.
- **Temperature Adjustment:** Use the **Plus (+)** and **Minus (-)** buttons to set the desired temperature for each zone. The temperature range is typically -4°F to 68°F (-20°C to 20°C).
- **Dual-Zone Mode:** The unit features a dual-zone design, allowing you to set different temperatures for the refrigerator and freezer compartments. Refer to the display for specific zone indicators.
- **Power Off:** Press and hold the **Power button** ( ) for a few seconds to turn the unit off.

## 4.3 Ice Maker Operation



Image: A close-up of the ice maker compartment, showing ice cubes being produced. Text indicates '10 PCS/6 MINS FAST & EASY', 'CAN PRODUCE TWO KINDS OF ICE CUBES' (Large Bullet and Small Bullet), 'VOLUMINOUS' (2 liters capacity, up to 120 ice cubes), and 'DETACHABLE' ice basket.

- **Fill Water Reservoir:** Open the ice maker lid and fill the water reservoir with clean drinking water up to the MAX fill line.
- **Activate Ice Making:** Press the dedicated **Ice Maker button** on the control panel. The unit will begin producing ice.
- **Ice Production:** The ice maker can produce approximately 10 pieces of ice in about 6 minutes. It can produce both large and small bullet-shaped ice cubes.
- **Ice Storage:** The ice basket has a capacity of up to 2 liters (approximately 120 ice cubes) and is detachable for easy access.
- **Ice Maker Priority:** When both the refrigerator and ice maker are operating simultaneously, the ice maker function takes priority. During this time, the refrigerator compartment will operate in an insulation (keep warm) mode to conserve power for ice production.



CAR REFRIGERATOR & ICE MAKER

REFRIGERATOR OPERATES IN

**INSULATION  
MODE**

ICE-MAKING MODE

**TAKES  
PRIORITY**

When the ice maker and refrigerator are operating at the same time, the ice maker mode takes priority and the refrigerator operates in the keep warm mode

Image: A diagram illustrating the operational priority: 'REFRIGERATOR OPERATES IN INSULATION MODE' and 'ICE-MAKING MODE TAKES PRIORITY'. The accompanying text explains that when both are active, the ice maker takes priority, and the refrigerator operates in keep warm mode.

#### 4.4 Battery Protection System

The unit is equipped with a 3-stage battery protection system to prevent your vehicle's battery from draining. You can select the protection level (Low, Medium, High) via the settings menu on the control panel. Choose a higher setting for sensitive batteries or when the unit is connected to a starter battery.

#### 4.5 Additional Features

# PORTABLE DESIGN

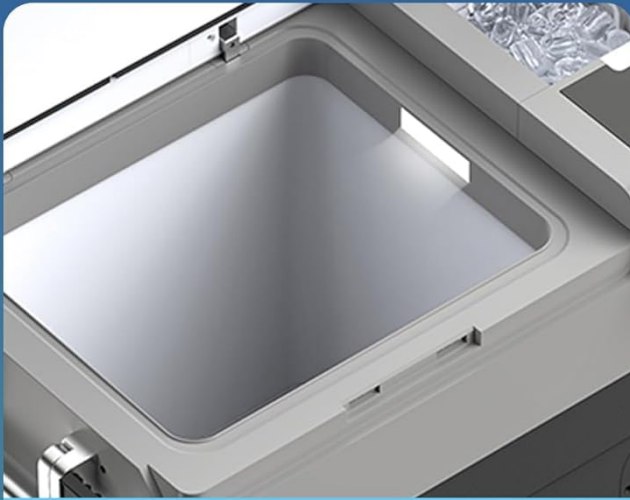
Make your camping easier



**Stainless Steel Bottle Opener**



**USB Plug to Charge Electronic Products**



**Internal LED Light**



**Easy Drainage the Ice Maker**

Image: A collage of four images showing portable design features: a stainless steel bottle opener, a USB plug for charging electronic products, an internal LED light, and an easy drainage port for the ice maker.

- **Stainless Steel Bottle Opener:** Conveniently located on the side of the unit.
- **USB Charging Port:** Use the integrated USB port to charge small electronic devices.
- **Internal LED Light:** Illuminates the interior for easy visibility in low light conditions.
- **Easy Drainage:** A drainage port is provided for convenient removal of melted ice or water during cleaning.

# EASY TO TAKE ANYWHERE



Handle Can Be Turned Into a Table Top

High Quality Metal Handle)

Rubber Wheel  
Quiet & Wear-Resistant

Image: A person pulling the TROPOW portable refrigerator using its retractable handle. Insets show the handle can be turned into a table top, durable rubber wheels, and a high-quality metal handle.

- **Retractable Handle and Wheels:** For easy transport, the unit is equipped with sturdy rubber wheels and a retractable handle.
- **Handle as Table Top:** The handle can be extended and used as a small table surface.

## HIGH-CAPACITY REMOVABLE BATTERY

Batteries are available for purchase  
(Include Battery Charge)

Battery Capacity

**15.6Ah**

Energy Storage

**168.48Wh**

Nominal Voltage

**10.8V**

Cooling for up to

**19H** Wire-free(ECO Mode)



Image: A hand inserting a high-capacity removable battery into the side compartment of the TROPOW portable refrigerator. Details show Battery Capacity 15.6Ah, Energy Storage 168.48Wh, Nominal Voltage 10.8V, and Cooling for up to 19H wire-free (ECO Mode).

- **High-Capacity Removable Battery (Optional):** An optional battery (15.6Ah, 168.48Wh, 10.8V) can provide up to 19 hours of wire-free cooling in ECO mode. Batteries are available for separate purchase.

## 5. MAINTENANCE

### 5.1 Cleaning

- Always unplug the unit before cleaning.
- Wipe the interior and exterior surfaces with a soft cloth dampened with mild detergent and warm water.
- For stubborn stains, use a non-abrasive cleaner.
- Ensure all surfaces are completely dry before plugging the unit back in.
- Clean the ventilation grilles regularly to ensure proper airflow.

### 5.2 Defrosting and Drainage

- The unit features automatic defrost. However, if a thick layer of ice builds up, manually defrost the unit by unplugging it and allowing the ice to melt naturally.
- Use the drainage port to remove melted water from the ice maker or main compartment.

### 5.3 Storage

- When storing the unit for an extended period, ensure it is clean and completely dry.
- Leave the lid slightly ajar to prevent odors and mold growth.
- Store in a dry, well-ventilated area, away from direct sunlight and extreme temperatures.

## 6. TROUBLESHOOTING

If you encounter issues with your TROPOW portable refrigerator, refer to the following common troubleshooting steps:

Problem	Possible Cause	Solution
Unit does not power on	No power supply; Damaged power cord; Blown fuse in vehicle; Low battery voltage.	Check power connection; Try a different power outlet; Inspect power cord for damage; Check vehicle fuse; Recharge or replace battery.
Unit not cooling effectively	Temperature setting too high; Poor ventilation; Overloaded compartment; Door not sealed properly; High ambient temperature.	Adjust temperature setting lower; Ensure adequate space around unit; Do not overfill; Check door seal for obstructions; Operate in a cooler environment if possible.
Ice maker not producing ice	Water reservoir empty; Ice maker mode not activated; Ambient temperature too high; Ice basket full.	Fill water reservoir; Activate ice maker mode; Ensure unit is in a suitable environment; Empty ice basket.
Excessive noise	Unit not on a level surface; Obstruction near fan; Compressor issue.	Place on a stable, level surface; Check for and remove any obstructions; If noise persists, contact customer support.
Display shows an error code	Internal fault.	Note the error code and contact customer support for specific guidance.

If the problem persists after attempting these troubleshooting steps, please contact TROPOW customer support.

## 7. SPECIFICATIONS

Feature	Specification
Brand	TROPOW
Model Number	vcHG-5MNb8foiud4kl9wWQBJ2Q
Capacity	40 Quarts (38 Liters)
Cooling Range	-4°F to 68°F (-20°C to 20°C)

Feature	Specification
Power Input	DC 12V/24V, AC 100-240V
Item Weight	51.5 pounds (23.36 kg)
Product Dimensions (L x W x H)	31.89 x 19.09 x 21.46 inches (81 x 48.5 x 54.5 cm)
Special Features	Dual-zone, Ice Maker, 3-Stage Battery Protection, Low Noise, Portable, USB Charging, Bottle Opener
Included Components	Electric cooler, AC power cord, DC power cord
Defrost System	Automatic

## 8. WARRANTY AND SUPPORT

---

TROPOW products are manufactured to high-quality standards. For warranty information, technical support, or service inquiries, please refer to the warranty card included with your product or visit the official TROPOW website. Please have your model number (vcHG-5MNb8foiud4kI9wWQBJ2Q) and purchase date available when contacting support.