



Manuals.plus /

› 3DMakerpro /

› 3DMakerpro Mole Basic 3D Scanner Instruction Manual

## 3DMakerpro Mole Basic

# 3DMakerpro Mole Basic 3D Scanner Instruction Manual

Model: Mole Basic

## INTRODUCTION

---

The 3DMakerpro Mole Basic 3D Scanner is a high-precision handheld device designed for capturing detailed 3D models. It offers an accuracy of up to 0.05mm and a point distance of 0.1mm, making it suitable for various applications requiring fine detail. The scanner features a single capture range of 200x100mm and a scanning speed of up to 10 frames per second (FPS), enabling rapid scanning of medium-sized objects. It utilizes a harmless near-infrared (NIR) light source, ensuring safety during use, including facial scanning. The Mole Basic is compatible with Windows 10 and MacOS operating systems and integrates with JMStudio software for processing and exporting scans in common 3D file formats such as OBJ, STL, PLY, and ASC.

## WHAT'S IN THE BOX

---

Verify that all components are present in your package:

- 3D Scanner (Mole Basic)
- Power Cord
- Data Cable
- User Manual

# Mole Standard Package



Image: Mole Basic Standard Package contents.

## SETUP

1. **System Requirements:** Ensure your computer meets the necessary specifications for 3D scanning software. A high-performance PC with ample RAM and a dedicated graphics card is recommended for optimal performance.
2. **Connect the Scanner:** Connect the Mole Basic 3D scanner to your computer using the provided data cable. Connect the power cord to the scanner and a power outlet.
3. **Install JMStudio Software:** Download and install the latest version of JMStudio software from the official 3DMakerpro website. Follow the on-screen instructions for installation.
4. **Initial Calibration:** Upon first use or after software updates, the scanner may require calibration. Follow the calibration prompts within the JMStudio software to ensure accurate scanning results. This process may take some time.

## OPERATING INSTRUCTIONS

## Scanning Process

The Mole Basic 3D scanner is designed for ease of use, featuring anti-shake lenses and compatibility with various object types.

### Accurate and Detailed Scanning

Mole achieve up to 0.05mm accuracy and 0.1mm point distance

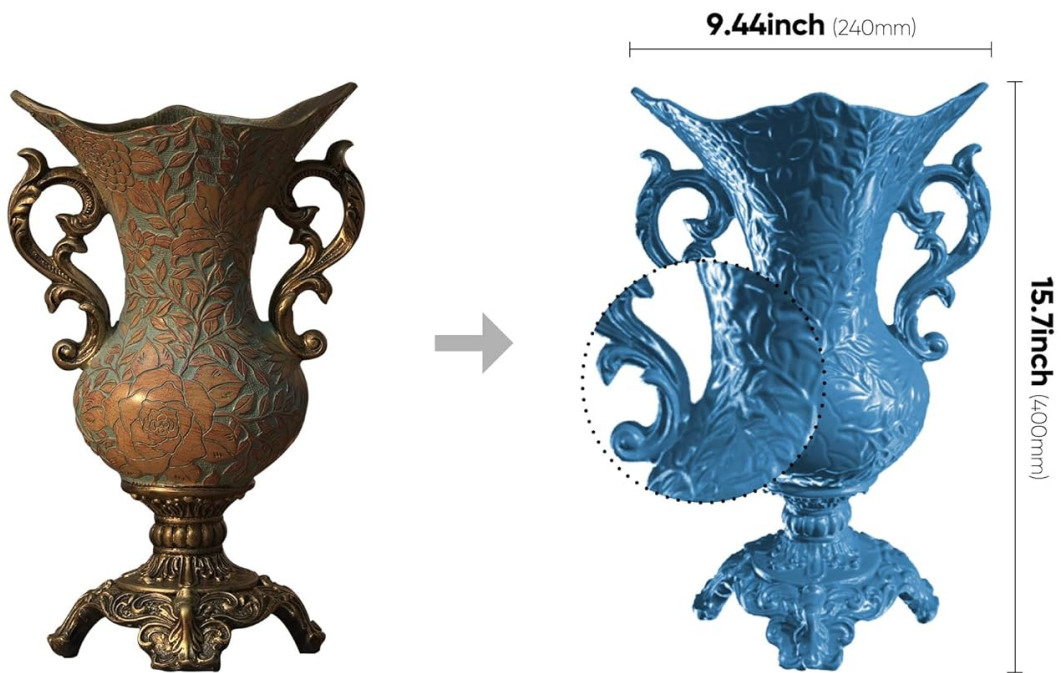


Image: Accurate and Detailed Scanning capability of the Mole Basic.

The scanner achieves high accuracy and detailed capture, reproducing objects with precision.

# Black Objects? No Problem

Near Infrared (NIR) has excellent optical compatibility



Image: Scanning black objects is possible with the Near Infrared (NIR) light source.

The Near Infrared (NIR) light source provides excellent optical compatibility, allowing for effective scanning of black or dark-colored objects that are often challenging for other scanners.

# No-marker Scanning

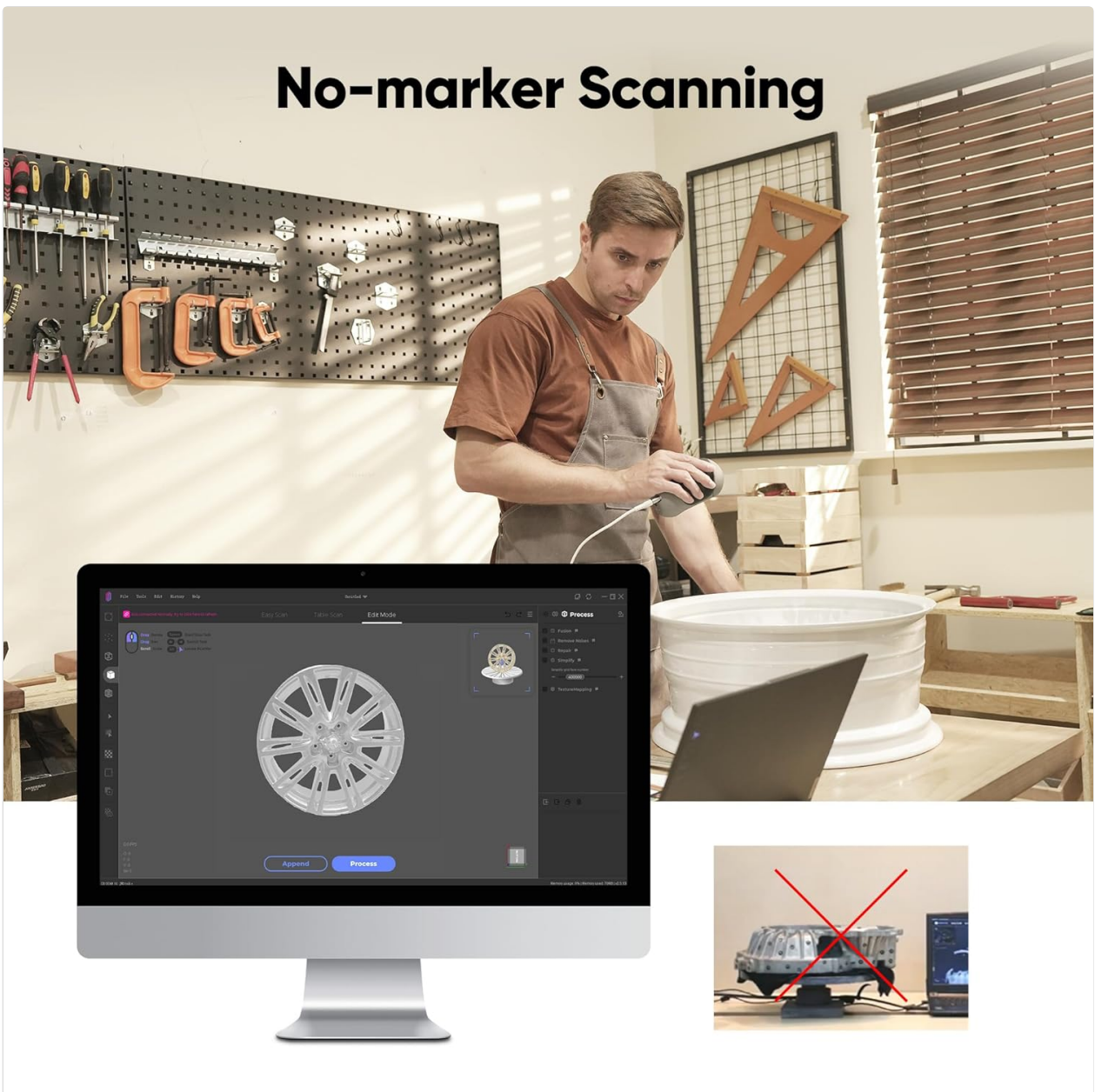


Image: No-marker Scanning in progress.

The Mole Basic supports marker-free scanning, simplifying the preparation process for many objects. This allows for a more fluid and continuous scanning experience.

# Optical Anti-shake Modules

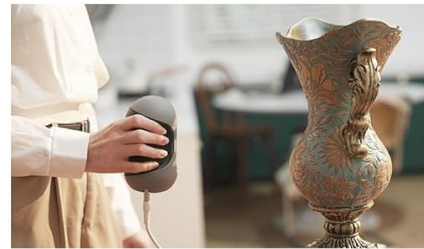


Image: Optical Anti-shake Modules for stable scanning.

Equipped with optical anti-shake modules, the scanner maintains tracking and accuracy even with minor hand movements, reducing the risk of losing the scan during operation.

# Scan in Bright Sunlight



Image: Scanning in Bright Sunlight.

The scanner is designed to perform effectively even in bright ambient light conditions, including direct sunlight, expanding its usability to various environments.

## Using JMStudio Software

JMStudio is the dedicated software for the 3DMakerpro Mole Basic 3D scanner, compatible with MacOS and Microsoft Windows.

# Made for Scanning

One-click Generation of 3D Models



JMStudio



macOS



Microsoft



Image: JMStudio software interface for 3D model generation.

- **Initiate Scan:** Open JMStudio and select the appropriate scanning mode.
- **Real-time Feedback:** The software provides real-time visual feedback of the scanning process, allowing you to adjust your scanning technique as needed.
- **Post-processing:** After scanning, use JMStudio's tools to clean, align, and merge scan data.
- **Export:** Export your completed 3D models in formats such as OBJ, STL, PLY, or ASC for use with other 3D design, editing, or printing software.

## MAINTENANCE

- **Cleaning:** Gently wipe the scanner's lenses and body with a soft, dry, lint-free cloth. Avoid using abrasive cleaners or solvents.
- **Storage:** Store the scanner in a clean, dry environment, away from direct sunlight and extreme temperatures. Use the original packaging or a protective case when not in use.
- **Software Updates:** Regularly check for and install software updates for JMStudio to ensure optimal performance and access to new features.

## TROUBLESHOOTING

---

- **Scanner Not Detected:** Ensure the data cable is securely connected to both the scanner and the computer, and that the scanner is powered on. Try a different USB port.
- **Sluggish Software Performance:** This can occur if your computer's specifications are insufficient for processing large 3D data. Close other demanding applications, ensure your graphics drivers are updated, or consider upgrading your hardware.
- **Lost Tracking During Scan:** Ensure consistent lighting conditions and avoid rapid movements. The anti-shake modules help, but extreme movements can still disrupt tracking. Recalibrate the scanner if issues persist.
- **Poor Scan Quality:** Check for proper lighting, ensure the object is stable, and verify that the scanner lenses are clean. Re-run calibration if necessary.
- **Export Issues:** Ensure JMStudio is up-to-date. Verify that the target software supports the chosen export format (OBJ, STL, PLY, ASC).

For persistent issues not covered here, please refer to the official 3DMakerpro support resources.

## SPECIFICATIONS

---

Feature	Specification
Accuracy	Up to 0.05mm
Point Distance	0.1mm
Scanning Speed	Up to 10 FPS
Single Capture Range	200mm x 100mm
Light Source	Near-infrared (NIR)
Output Formats	OBJ, STL, PLY, ASC
Compatibility	Windows 10, MacOS
Dimensions (Approx.)	80mm (W) x 141mm (H)

## WARRANTY INFORMATION

---

Warranty details for the 3DMakerpro Mole Basic 3D Scanner are typically provided with the product packaging or available on the official 3DMakerpro website. Please refer to these resources for specific terms, conditions, and duration of your product warranty.

## SUPPORT

---

For further assistance, technical support, or to access additional resources, please visit the official 3DMakerpro website or contact their customer service department. Ensure you have your product model (Mole Basic) and any relevant purchase information ready when seeking support.

**Manufacturer:** 3DMakerpro

