

DUMOS DMLDRBK

DUMOS 3-Step Foldable Step Ladder (Model: DMLDRBK) Instruction Manual

Your guide to safe and effective use.

INTRODUCTION

Thank you for choosing the DUMOS 3-Step Foldable Step Ladder. This manual contains important information regarding the safe assembly, operation, maintenance, and storage of your new step ladder. Please read it thoroughly before use and retain it for future reference.



Image: The DUMOS 3-Step Foldable Step Ladder shown in both its open, ready-to-use configuration and its compact, folded state for storage.

SAFETY INFORMATION

Always prioritize safety when using any ladder. Failure to follow these instructions may result in serious injury or property damage.

- **Inspect Before Use:** Before each use, check the ladder for any damage, loose parts, or wear. Do not use if damaged.
- **Stable Surface:** Always place the ladder on a firm, level, and non-slippery surface. Ensure all four feet are in full contact with the ground.
- **Weight Capacity:** Do not exceed the maximum load capacity of 800 lbs (approximately 363 kg). This includes the user and any tools or materials.
- **Maintain Balance:** Always face the ladder when climbing up or down. Maintain three points of contact (two hands and one foot, or two feet and one hand) at all times.
- **Do Not Overreach:** Keep your body centered between the side rails. Do not overreach to the sides, as this can cause the ladder to tip.
- **Top Step:** Do not stand on the top step or the handrail. The top step is not designed for standing.
- **Children and Pets:** Keep children and pets away from the ladder during use.

- **Electrical Hazards:** Avoid using the ladder near electrical wires or equipment. Metal conducts electricity.
- **Folding Mechanism:** Ensure the safety buckle is engaged when the ladder is open and locked when folded. Keep fingers clear of pinch points during folding and unfolding.

SETUP AND UNFOLDING

The DUMOS 3-Step Foldable Step Ladder is designed for quick and easy setup.

1. **Positioning:** Place the folded ladder on a flat, stable surface.
2. **Unfolding:** Hold the top handrail firmly. Gently pull the front and back sections of the ladder apart until they are fully extended.
3. **Secure Mechanism:** Ensure the metal safety buckle automatically locks into place. This confirms the ladder is securely open and ready for use.
4. **Stability Check:** Before climbing, gently push on the sides of the ladder to ensure it is stable and does not wobble.

Your browser does not support the video tag.

Video: This video demonstrates the simple process of unfolding the DUMOS Step Ladder, ensuring the safety mechanism is engaged, and its stable use for reaching elevated items.

OPERATING INSTRUCTIONS

Follow these guidelines for safe operation:

- **Climbing:** Climb one step at a time, using the comfortable handrail for support.
- **Foot Placement:** Place your feet fully on the wide, anti-slip pedals. The textured surface provides secure footing.
- **Working Height:** Use the ladder for tasks that require reaching moderate heights, such as changing light bulbs, accessing high shelves, or light painting.
- **Portable Use:** The lightweight and portable design makes it suitable for use in kitchens, garages, offices, and outdoor settings.



Image: Individuals utilizing the DUMOS step ladder for common household tasks, including painting walls and accessing items on high shelves, demonstrating its versatility.



Comfy and Anti-slip handle

Wide pedals with no-slip pattern

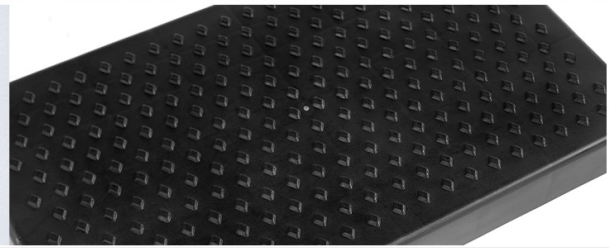


Image: A person using the DUMOS step ladder outdoors to trim a tree branch, highlighting its suitability for various outdoor applications.

MAINTENANCE

Proper maintenance ensures the longevity and safety of your ladder.

- **Cleaning:** Wipe the ladder clean with a damp cloth. Avoid abrasive cleaners that could damage the finish or anti-slip surfaces.
- **Storage:** Fold the ladder to its compact size and store it in a dry, safe place away from direct sunlight and extreme temperatures. Its slim profile allows for storage in tight spaces like closets or behind doors.
- **Lubrication:** Periodically check and lubricate moving parts (hinges, safety buckle) with a light oil to ensure smooth operation.

Easy to Store

Can be placed
in the corner to
save space



Image: The DUMOS step ladder in its folded state, demonstrating its compact design and ease of storage in narrow spaces, such as beside a cabinet.

TROUBLESHOOTING

If you encounter issues with your DUMOS step ladder, refer to the following common problems and solutions:

- **Ladder feels unstable:** Ensure the ladder is placed on a completely flat and firm surface. Check that the safety buckle is fully engaged and all feet are making contact with the ground.
- **Difficulty folding/unfolding:** Check for any obstructions in the hinge mechanisms. Apply a small amount of lubricant to the hinges if they are stiff. Ensure the safety buckle is disengaged before folding.
- **Steps feel slippery:** Clean the anti-slip pedal surfaces to remove any dirt, dust, or grease. Ensure your

footwear has good grip.

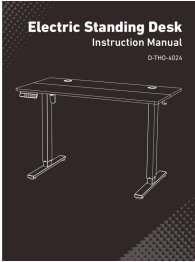
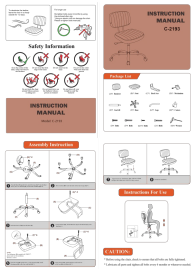
SPECIFICATIONS


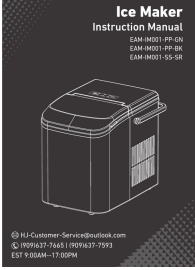
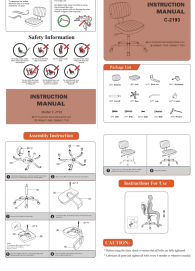
Feature	Specification
Brand	DUMOS
Model Number	DMLDRBK
Material	Steel (Metal)
Number of Steps	3
Load Capacity	800 Pounds
Product Dimensions (Open)	20.5"W x 45"H
Item Weight	15 Pounds
Special Features	Anti-Slip Pedals, Comfortable Handrail, Foldable
Color	Black

WARRANTY AND SUPPORT

For warranty information or technical support, please refer to the product packaging or contact DUMOS customer service directly. Keep your purchase receipt as proof of purchase.

Related Documents - DMLDRBK

	<p>Electric Standing Desk D-THO-4024 Assembly and Operation Manual</p> <p>Comprehensive guide for assembling and operating the D-THO-4024 electric standing desk, including specifications, step-by-step instructions, controller usage, and error code troubleshooting.</p>
	<p>DUMOS C-2193 Office Chair Assembly and Instruction Manual</p> <p>Comprehensive guide for assembling and using the DUMOS C-2193 office chair. Includes safety information, package contents, step-by-step assembly instructions, and usage guidelines.</p>

	<p>DUMOS C-3895 Ergonomic Office Chair Assembly, Use, and Warranty Guide</p> <p>This comprehensive guide provides detailed instructions for assembling, using, and maintaining the DUMOS C-3895 Ergonomic Office Chair. Includes package list, safety information, warranty details, and return policy.</p>
	<p>L Shaped Computer Desk Assembly and Instruction Manual</p> <p>Comprehensive instruction manual for assembling the L Shaped Computer Desk, model D-L02-49IN, including component lists, hardware details, and step-by-step assembly guidance.</p>
	<p>Ice Maker Instruction Manual - WBJ-10A</p> <p>Instruction manual for the WBJ-10A ice maker, covering safety information, product introduction, usage instructions, troubleshooting, and technical specifications. Learn how to operate and maintain your ice maker.</p>
	<p>DUMOS C-2193 Armless Office Chair Assembly and Usage Instructions</p> <p>Detailed assembly instructions and user guide for the DUMOS C-2193 armless office chair. Learn how to assemble your PU leather desk chair, understand safety precautions, and find maintenance tips for longevity.</p>