

[Manuals.plus](#) /

› [Supreme Trimmer](#) /

› Supreme Trimmer Vader Lite ST3700 Cordless Trimmer User Manual

Supreme Trimmer ST3700

Supreme Trimmer Vader Lite ST3700 Cordless Trimmer User Manual

Model: ST3700 | Brand: Supreme Trimmer

IMPORTANT SAFETY INFORMATION

Please read all safety instructions before using the Supreme Trimmer Vader Lite ST3700.

- Always keep the trimmer away from water sources. This device is **not waterproof**.
- Avoid contact with eyes and skin during operation.
- Do not use this trimmer on infants or children.
- Always unplug the trimmer from the power source before cleaning or performing any maintenance.
- Ensure proper ventilation during charging to prevent overheating.

PRODUCT OVERVIEW

The Supreme Trimmer Vader Lite ST3700 is a cordless barber liner and beard trimmer designed for precision grooming. It features a powerful motor and a durable blade for efficient cutting.

Key Features:

- **Ultra-Powerful Motor:** Equipped with a 7000 RPM motor for precise and efficient trimming of beards, hairlines, and for detailed line work.
- **Zero-Gap DLC T-Blade:** Features a Diamond-Like Carbon (DLC) coated T-blade, pre-set to zero gap for sharp, snag-free cutting and crisp edge-ups.
- **Extended Cordless Runtime:** A lithium battery provides up to 120 minutes of runtime on a single charge.
- **USB-C Fast Charging:** Recharges quickly via USB-C or the included charging dock.

- **Lightweight & Ergonomic Design:** Slim design ensures a secure grip and comfortable use, reducing hand fatigue during extended grooming sessions.
- **LCD Battery Display:** A clear LCD screen shows the real-time battery status.

What's Included:

- Supreme Trimmer Vader Lite ST3700
- 1mm, 3mm, 5mm, 7mm, 9mm Guide Combs (6 total)
- Charging Stand
- Cleaning Brush
- Hair Comb
- USB-C Charging Cable

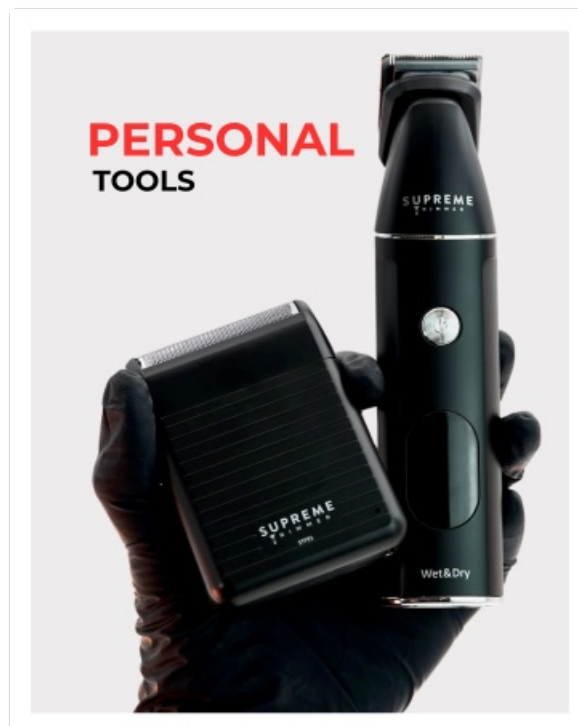


Image: The Supreme Trimmer Vader Lite ST3700 with its charging stand, various guide combs, cleaning brush, hair comb, and USB-C charging cable.

SETUP AND INITIAL USE

1. Charging the Trimmer

Before first use, fully charge the trimmer. Connect the USB-C charging cable to the trimmer or the charging stand, and then to a compatible USB power adapter (not included).

- The LCD display will show the battery percentage during charging.
- A full charge provides up to 120 minutes of cordless operation.

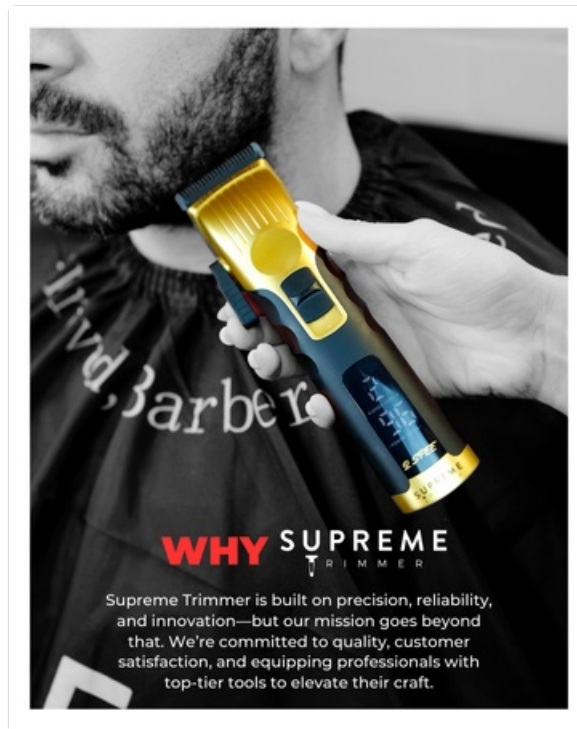


Image: The Vader Lite trimmer connected to its charging stand with a USB-C cable, indicating the charging process.

2. Attaching Guide Combs

Select the desired guide comb (1mm, 3mm, 5mm, 7mm, or 9mm) for your preferred hair length. Align the comb with the trimmer blade and push it firmly until it clicks into place.

- Ensure the comb is securely attached before turning on the trimmer.
- For zero-gap trimming, do not attach any guide comb.

OPERATING INSTRUCTIONS

Basic Trimming

1. Ensure the trimmer is fully charged.
2. Attach the desired guide comb, or use without for a close trim.
3. Press the power button to turn on the trimmer. The LCD display will show the battery level.
4. Hold the trimmer with the blade flat against the skin or at a slight angle, moving against the direction of hair growth.
5. Use slow, controlled strokes for best results.
6. After use, press the power button to turn off the trimmer.

Tips for Best Results:

- For precise lines and edge-ups, use the trimmer without a guide comb.
- Keep the blades clean and oiled for optimal performance and longevity.
- Stretch the skin taut in the area being trimmed for a smoother cut.



Image: A close-up view of the zero-gap DLC T-blade, highlighting its sharp teeth for precise trimming.

MAINTENANCE

Cleaning the Blades

1. Ensure the trimmer is turned off and unplugged from any power source.
2. Remove any attached guide comb.
3. Use the included cleaning brush to remove loose hairs from the blade area.
4. Apply a small amount of blade oil (not included, but often comes with trimmers) to the blades. Turn the trimmer on for a few seconds to distribute the oil, then turn it off and wipe off any excess.
5. Do not rinse the trimmer under water as it is not waterproof.

Storage

Store the trimmer in a cool, dry place away from direct sunlight and moisture. Keep it out of reach of children.

TROUBLESHOOTING

| Problem | Possible Cause | Solution |
|---------------------------------|---|--|
| Trimmer does not turn on. | Battery is depleted. | Charge the trimmer using the USB-C cable or charging stand. |
| Blades pull hair or cut poorly. | Blades are dirty or not oiled. Blades may be dull. | Clean and oil the blades. If problem persists, consider blade replacement. |

| Problem | Possible Cause | Solution |
|---------------------------------|--------------------------|---|
| Trimmer gets hot during use. | Extended continuous use. | Allow the trimmer to cool down. Ensure blades are clean and oiled. |
| Charging indicator not working. | Cable or adapter issue. | Check USB-C cable and power adapter connection. Try a different cable or adapter. |

SPECIFICATIONS

| Feature | Detail |
|--------------------------|--|
| Model Name | Vader Lite Trimmer (ST3700) |
| Motor Speed | 7000 RPM |
| Blade Material | High Carbon Stainless Steel with DLC Coating |
| Minimum Cutting Length | 1 Millimeter (with guide comb) / Zero-gap (without guide comb) |
| Maximum Cutting Length | 9 Millimeters (with guide comb) |
| Power Source | Battery Powered; Corded/Cordless |
| Battery Runtime | Up to 120 minutes |
| Charging Type | USB-C |
| Waterproof | No |
| Item Weight | 1 Pound |
| Dimensions | 10.87 x 3.98 x 2.32 inches (Package) |
| Manufacturer Part Number | ST3700 |
| UPC | 810161310593 |

WARRANTY AND SUPPORT

The Supreme Trimmer Vader Lite ST3700 comes with a **1-Year Warranty** for faulty or defective products. For customer support, please contact Supreme Trimmer during business hours:

- **Hours:** Monday - Friday, 8:00 AM - 3:30 PM PST
- **Phone/Text:** (818) 626-8065
- **Email:** Support@supremetrimmer.com

Please have your model number (ST3700) and purchase information ready when contacting support.

© 2026 Supreme Trimmer. All rights reserved.