

Fsitego C1

Fsitego Automatic Self-Cleaning Litter Box C1 User Manual

Model: C1 | Brand: Fsitego

INTRODUCTION

This manual provides essential information for the Fsitego C1 Automatic Self-Cleaning Litter Box. It covers setup, operation, maintenance, and safety guidelines to ensure optimal performance and a clean environment for your cats. This extra-large unit is designed for multiple cats, offering hands-free self-cleaning and smart app control for convenience.

SAFETY INFORMATION

Your cat's safety is paramount. The Fsitego C1 is equipped with advanced safety features:

- **Infrared and Weight Sensors:** The system automatically pauses its cleaning cycle the moment your pet approaches or enters the litter box. This ensures no accidental activation while your cat is inside.
- **Motor Overload Protection:** The litter box automatically stops if the motor is under excessive strain, preventing damage and ensuring long-lasting performance.
- **Child Lock:** A child lock feature can be activated to prevent unintended operation.

Always ensure the waste drawer is fully closed for proper and safe operation. If any abnormal conditions are detected, indicator lights on the control panel will alert you.

PACKAGE CONTENTS

Upon unboxing, verify that all the following items are included:

- 1x Automatic Litter Box Unit
- 1x User Manual
- 1x Anti-Track Mat
- 1x Roll of Trash Bags

- 1x Power Adapter
- 1x Cat Deodorizer
- 1x Litter Brush
- 4x Support Legs (labeled L/R for correct placement)

SETUP INSTRUCTIONS

1. **Unpack:** Carefully remove all components from the packaging. Ensure all protective foam and plastic wrapping are removed from the main unit and accessories.
2. **Install Support Legs:** Flip the main device to its side. Insert the four support legs into their designated slots, matching the 'L' (left) and 'R' (right) labels.
3. **Prepare Waste Drawer:** Line the waste drawer with a trash bag, ensuring the bag is secured by the internal slots and does not obstruct the front sensor.
4. **Insert Waste Drawer:** Slide the prepared waste drawer into its compartment at the base of the unit.
5. **Place Globe:** Carefully place the rotating globe onto the base. Ensure the litter guard inside the globe is horizontal to allow for proper leveling.
6. **Add Litter:** Remove the top bonnet of the globe. Pour clumping or silica gel litter directly into the top opening until it reaches the 'MAX' fill line. (Note: Not compatible with crystal litter or large particle pine litter).
7. **Replace Bonnet:** Securely place the top bonnet back onto the globe.
8. **Power On:** Plug the power adapter into the unit and then into a wall outlet. The litter box will immediately begin a leveling sequence.
9. **App Connection (Optional):** Scan the QR code in the user guide to download the 'Tuya Smart' app. Follow the in-app prompts to register, log in, and pair your device.

Large Capacity for Multiple Cats

28 days of scooping for one cat

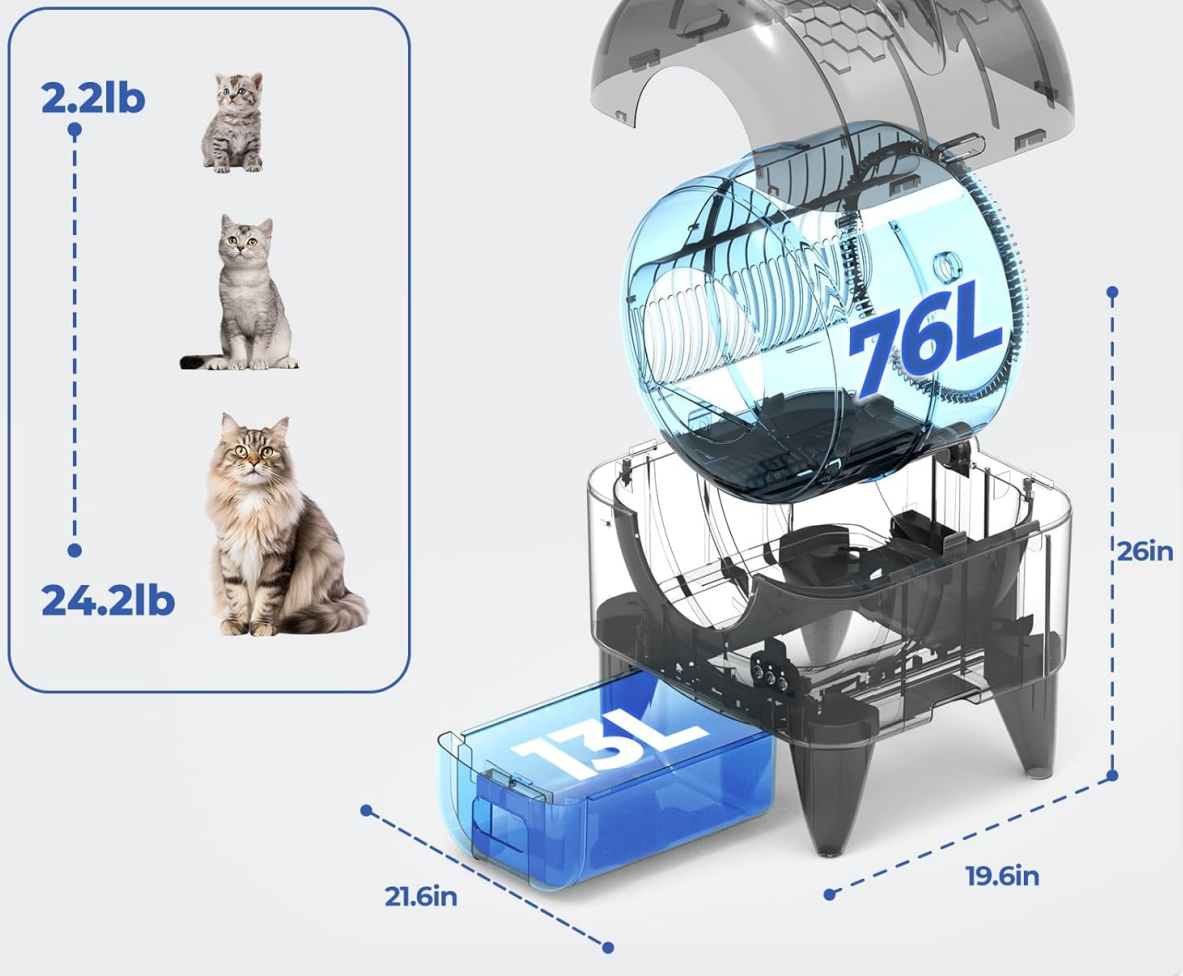


Figure 1: Overview of the Fsitego C1 Automatic Litter Box and its components.

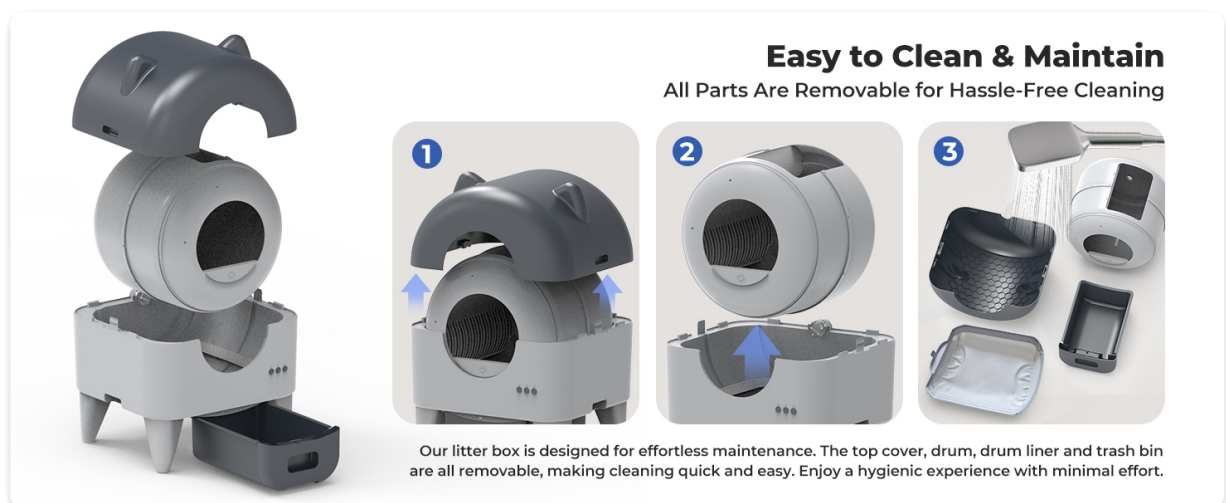


Figure 2: Visual guide for assembly and disassembly for cleaning.

OPERATING INSTRUCTIONS

The Fsitego C1 offers both manual control via its panel and smart control through the Tuya App.

Manual Control Panel

The control panel features three buttons and indicator lights:

- **Wi-Fi Button:** Press to connect to Wi-Fi. The indicator light will flash during configuration.
- **Empty Button:** A long press initiates a full empty cycle, dumping all litter into the waste bin. A short press starts a cleaning cycle.
- **Clean Button:** Press to start a cleaning cycle.

Indicator lights provide status updates, such as cleaning in progress, Wi-Fi connection status, or alerts if the waste drawer is not properly closed.

Smart App Control (Tuya App)

The Tuya App provides enhanced control and monitoring capabilities:

- **Remote Cleaning:** Initiate cleaning cycles from anywhere.
- **Usage Tracking:** Monitor your cat's weight and usage frequency, providing valuable health insights.
- **Real-time Notifications:** Receive alerts for waste drawer fullness and operational status.
- **Customizable Cleaning Intervals:** Adjust the delay time for cleaning cycles after your cat exits the box (e.g., 5 minutes to allow clumping).
- **Ambient Lighting Control:** Customize the built-in ambient lighting with 6 color options and adjustable brightness.
- **Mode Switching:** Easily switch between automatic and manual operating modes.

Intelligent Control via Smart App

Offers a hands-free experience, eliminating the need for scooping

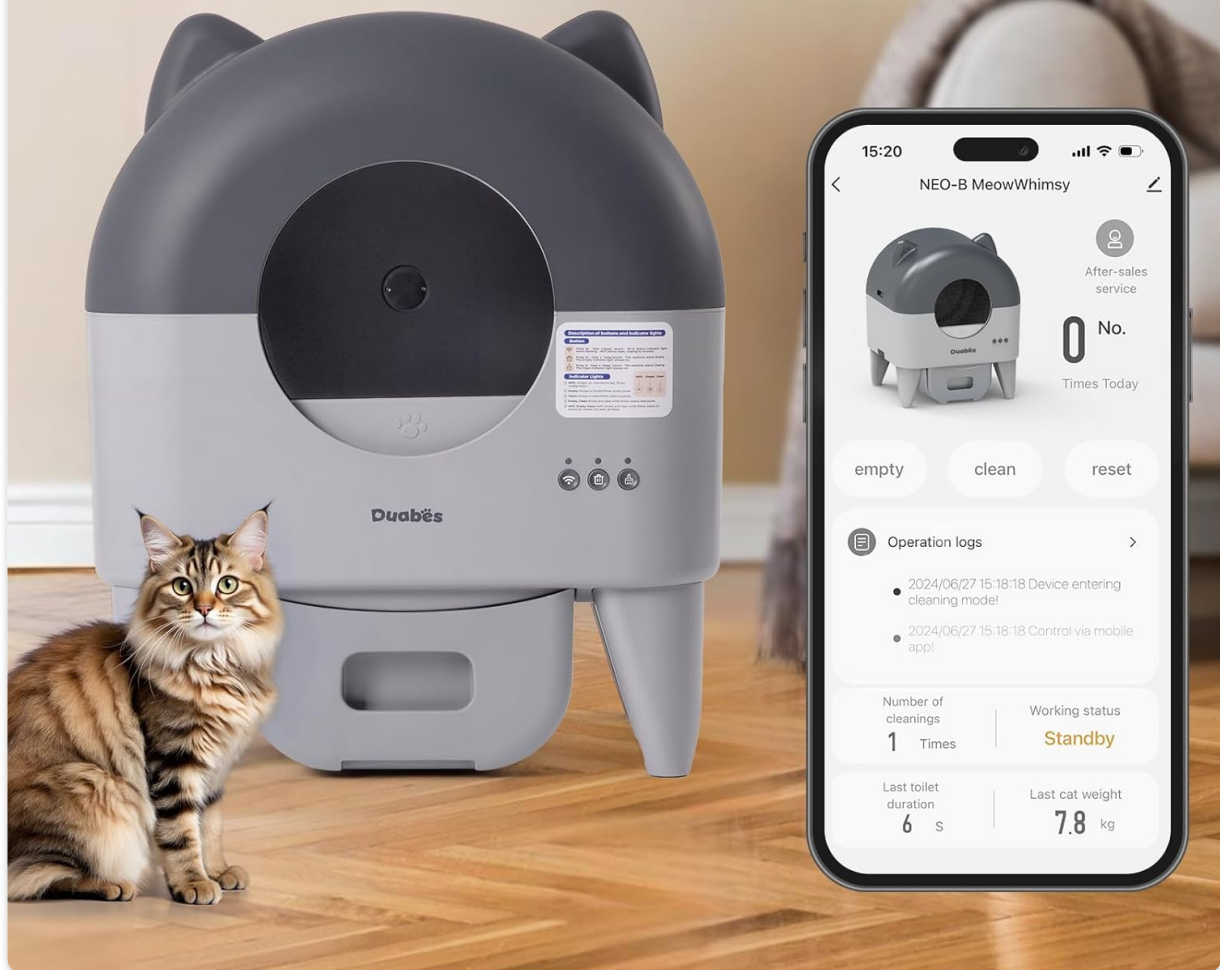


Figure 3: The Tuya App allows for remote control and monitoring of the litter box.

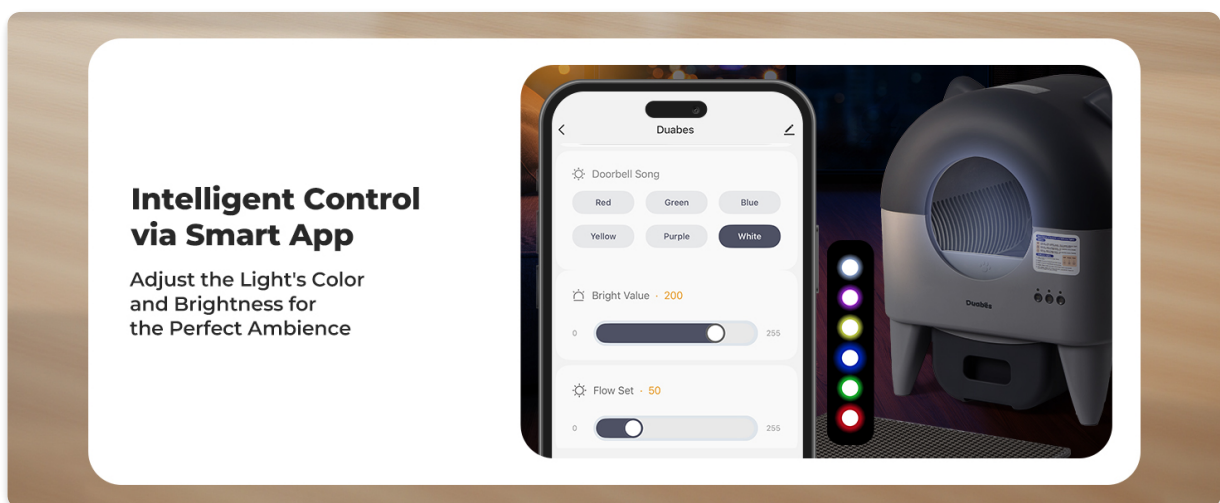


Figure 4: Adjust the internal ambient lighting color and brightness via the app.

MAINTENANCE

Regular maintenance ensures the longevity and hygienic operation of your Fsitego C1 litter box.

Emptying the Waste Drawer

- The extra-large waste drawer can hold waste for up to 4 weeks for a single cat. For multiple cats, monitor the app notifications for fullness.
- To empty, pull out the waste drawer, seal the trash bag, and dispose of it. Replace with a new trash bag, ensuring it is properly secured and does not obstruct sensors.

Cleaning the Unit

- All parts of the litter box are removable for hassle-free cleaning.
- To deep clean, unplug the unit. Remove the top bonnet, then lift out the rotating drum and the drum liner.
- Clean the drum, liner, and base with mild soap and water. Ensure all parts are completely dry before reassembling.
- The removable drum liner is designed for easy removal, rinsing, and secure re-locking into place.

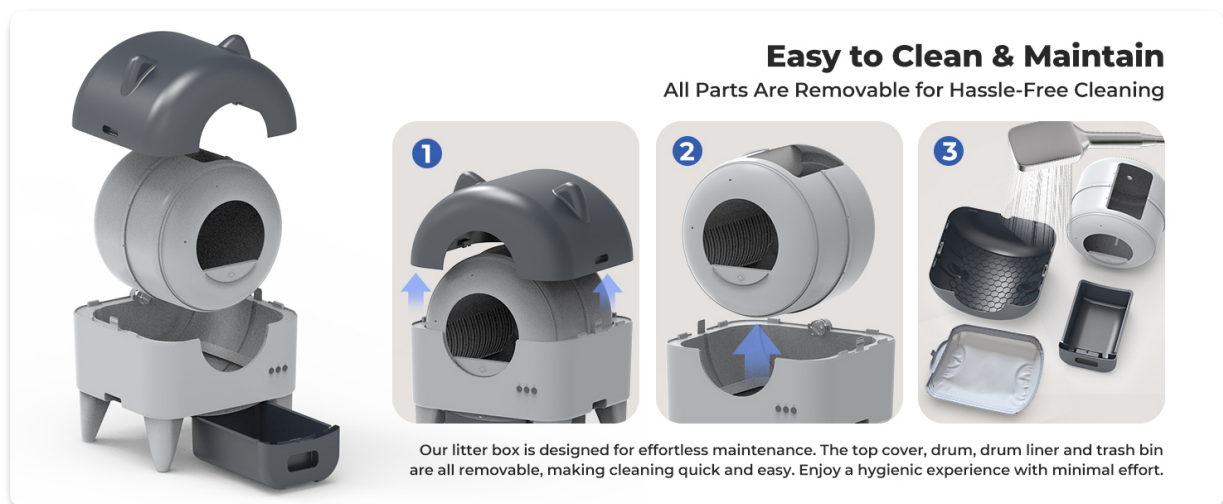


Figure 5: The modular design allows for easy disassembly and cleaning of all components.

TROUBLESHOOTING

- **Device Not Operating:** Check if the power adapter is securely plugged in. Ensure the waste drawer is fully inserted and closed. Refer to the indicator lights on the control panel for specific error codes or warnings.
- **Cleaning Cycle Pauses:** This is a safety feature. The unit will pause if a cat or object is detected entering the globe. It will resume once the area is clear.
- **App Connectivity Issues:** Ensure your home Wi-Fi network is 2.4GHz (5GHz networks are not supported). Restart the device and your router if necessary. Follow the app's connection guide carefully.
- **Odor Issues:** Ensure the waste drawer is emptied regularly. Check that the waste drawer is sealed properly. Consider using the included cat deodorizer.
- **Litter Not Clumping:** Ensure you are using a high-quality clumping or silica gel litter. Crystal litter is not compatible. Adjust the delayed cleaning time in the app to allow sufficient time for clumps to form before cleaning.

SPECIFICATIONS

| Feature | Detail |
|----------------------------|---|
| Brand | Fsitego |
| Model Name | C1 |
| Litter Box Type | Automated Self-Cleaning Litter Box |
| Color | Grey |
| Size | Extra-Large |
| Material | Acrylonitrile Butadiene Styrene (ABS) |
| Product Dimensions (LxWxH) | 21.6 x 19.6 x 26 inches |
| Item Weight | 25 Pounds |
| Noise Level | Approximately 35dB (Whisper-Quiet Operation) |
| Litter Compatibility | Clumping and Silica Gel Litters (Not for Crystal Litter) |
| Control | Smart APP Control (Tuya App), Manual Panel Buttons |
| Safety Features | Infrared Sensors, Weight Sensors, Motor Overload Protection |
| Additional Features | Built-in Adjustable Ambient Lighting, Anti-Track Mat |

Quiet & Clean, Anytime

Low Noise Design, No Disruptions



Figure 6: The litter box operates at a quiet 35dB, comparable to a library environment.

Multiple Safety Sensors for Your Cat's Protection



Figure 7: Equipped with multiple sensors for maximum pet safety during operation.

WARRANTY AND SUPPORT

For warranty information, technical support, or customer service inquiries, please refer to the contact details provided in the original product packaging or visit the official Fsitego website. Keep your purchase receipt for warranty claims.