

Manuals+

[Q & A](#) | [Deep Search](#) | [Upload](#)

manuals.plus /

› [Miden](#) /

› [Miden S9 Dual 4K Dash Cam User Manual](#)

Miden S9

Miden S9 Dual 4K Dash Cam

User Manual

INTRODUCTION

This manual provides detailed instructions for the installation, operation, and maintenance of your Miden S9 Dual 4K Dash Cam. Please read this manual thoroughly before using the device to ensure proper functionality and to maximize your driving safety and recording experience.

PACKAGE CONTENTS

Verify that all items listed below are included in your package. If any items are missing or damaged, please contact customer support.

- 1 x Miden 4K Dash Cam (Front Camera)
- 1 x 4K Rear Camera
- 1 x 64GB SD Card
- 1 x USB SD Card Reader
- 1 x Suction Mount
- 1 x Charging Cable
- 1 x Car Charger
- 1 x Wiring Crowbar
- 1 x Type-C Data Cable
- 1 x User Manual



4K Ultra HD x15 Megapixels

3.2inch IPS LCD large screen, allowing you to enjoy a new visual experience brought by a large field of view

Front And Rear Screen Switching Freely



Image: All components included in the Miden S9 Dual 4K Dash Cam package.

PRODUCT OVERVIEW

The Miden S9 Dual 4K Dash Cam is designed to provide comprehensive video surveillance for your vehicle, featuring both front and rear cameras for a wide field of view.

Key Features:

- **Dual 4K UHD Recording:** Captures Ultra HD 4K (3840×2160P) video from both front and rear cameras.
- **Wide Angle Lenses:** 176° front camera and 160° waterproof rear camera for extensive coverage.
- **3.5-inch IPS Screen:** Large, clear display for easy operation and video playback.
- **Advanced Sensor & Processor:** Equipped with a Sony STARVIS IMX675 CMOS sensor and Novatek processor for superior image quality.
- **WDR & HDR Technology:** Enhances color accuracy and clarity in various lighting conditions.
- **G-Sensor:** Automatically detects collisions and locks video footage.
- **Loop Recording:** Continuously records, overwriting old files while protecting locked evidence.
- **24H Parking Monitor:** Provides surveillance when the vehicle is parked, activating upon vibration

detection.

- **Reversing Image Assist:** Aids in parking by displaying a wide-angle rear view with guidelines when reverse gear is engaged.

MIDEN

4K Dash Cam

Front And Rear HD Dual Cameras,
Safe Without Blind Spots

4K+4K G-Sensor Lock Loop Recording Parking Monitor Super Night Vision 64GB SD Card Included Advance Novatek Processor WDR & HDR

Image: Overview of the Miden S9 Dash Cam's powerful functions.



Image: The 3.5-inch IPS LCD screen displaying 4K Ultra HD video.



Image: Wide-angle coverage of the front (176°) and rear (160°) cameras.

SETUP

1. Inserting the SD Card

Insert the provided 64GB SD card into the dash cam's SD card slot. Ensure the card is inserted correctly until it clicks into place. The dash cam supports up to 256GB Class 10 or higher Micro SD cards.

2. Mounting the Front Camera

Attach the suction mount to the front camera. Clean the windshield thoroughly where you intend to mount the dash cam. Press the suction cup firmly against the glass and flip the lever to secure it. Position the camera to ensure a clear view of the road without obstructing your driving vision.

Super Night Vision

Even at night, small details such as driving and license plates can be clearly captured.



Advance Novatek
Processor



8-Layer Lens



WDR & HDR



SONY STARVIS
IMX675



Image: Front camera mounted on the windshield.

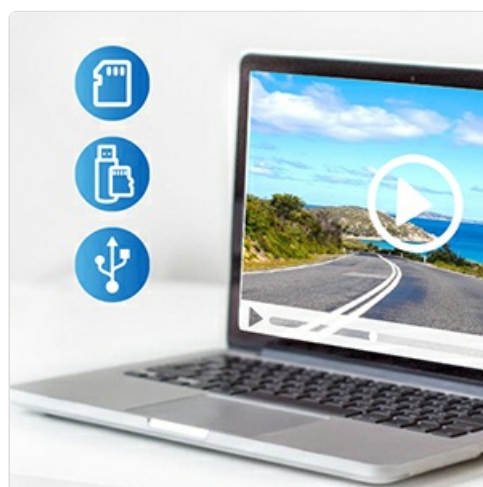


Image: The dash cam mount allows for 360° rotation for optimal positioning.

3. Installing the Rear Camera

Connect the rear camera to the main dash cam unit using the provided cable. Route the cable neatly along the vehicle's interior trim. Mount the rear camera on the rear windshield, ensuring it has a clear view. The rear

camera is waterproof and can also be mounted externally if preferred (professional installation recommended for external mounting).



Image: Connection diagram for front camera, rear camera, and car charger.

4. Power Connection

Connect the car charger to the dash cam's Type-C port and plug the other end into your vehicle's cigarette lighter socket. The dash cam will automatically power on and begin recording when the vehicle starts.

5. Initial Settings

Upon first use, or after a reset, you may need to set the date and time. Navigate through the menu using the buttons on the side of the device. Ensure the correct date and time are set for accurate timestamping of recordings.

OPERATING INSTRUCTIONS

1. Power On/Off

The dash cam typically powers on automatically when the vehicle starts and powers off when the engine is turned off. To manually power on/off, press and hold the power button located on the side of the device.

2. Recording

Once powered on, the dash cam will automatically begin loop recording. A red indicator light or icon on the screen will confirm recording is active. To manually stop/start recording, press the 'OK' button.

3. Menu Navigation

Use the 'Up' and 'Down' arrow buttons to navigate through menu options. Press the 'OK' button to select an option and the 'Menu' button to exit a menu or return to the previous screen.

Seamless Loop Recording

Newly recorded videos will automatically overwrite old videos, locked videos will not be affected.



Free Ultra-Fast 64GB SD Card

The writing speed is up to 120MB/s, easily capturing fast actions, so that you will not miss any important moment

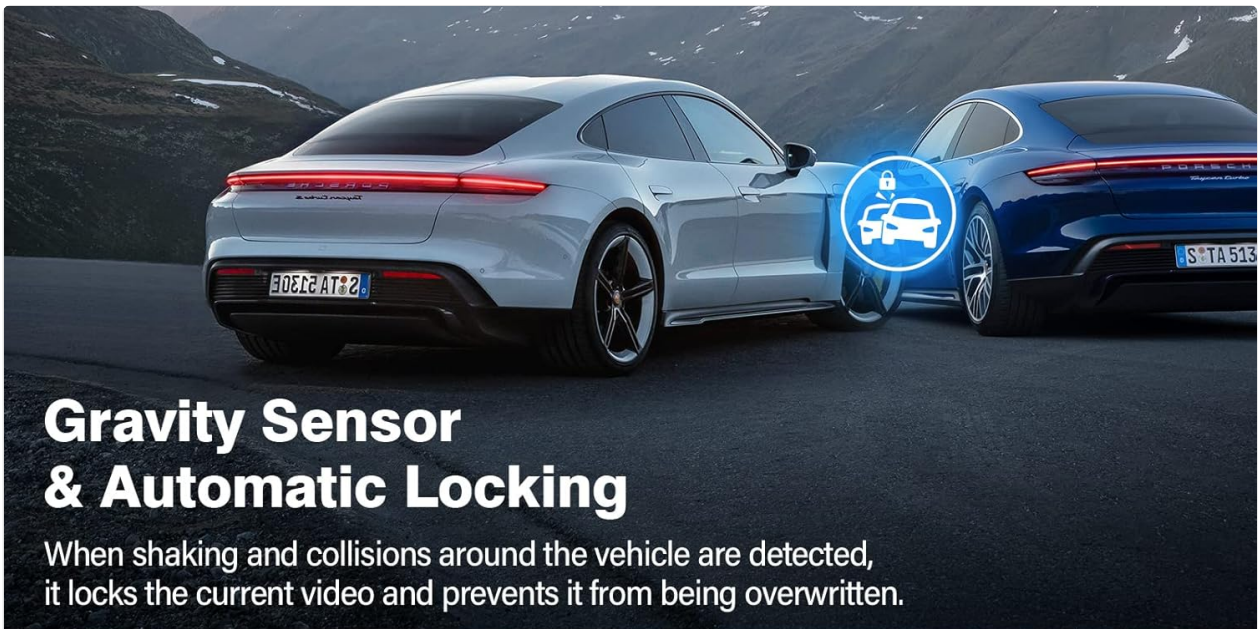
Image: The dash cam's 3.5-inch IPS screen displaying recording information and menu icons.

4. Screen Switching

The dash cam allows you to switch between different display modes on the 3.5-inch IPS screen:

- **Default Display:** Shows both front and rear views (split screen).
- **Full Front Camera:** Displays only the front camera view.
- **Full Rear Camera:** Displays only the rear camera view.

Press the designated screen switching button (refer to your device's button layout) to cycle through these display modes.



Gravity Sensor & Automatic Locking

When shaking and collisions around the vehicle are detected, it locks the current video and prevents it from being overwritten.



24 Hours Parking Monitor

Providing 24/7 protection for your car.

Image: Examples of screen switching options, including default, full front, and full rear views.

Front And Rear Screen Switching Freely

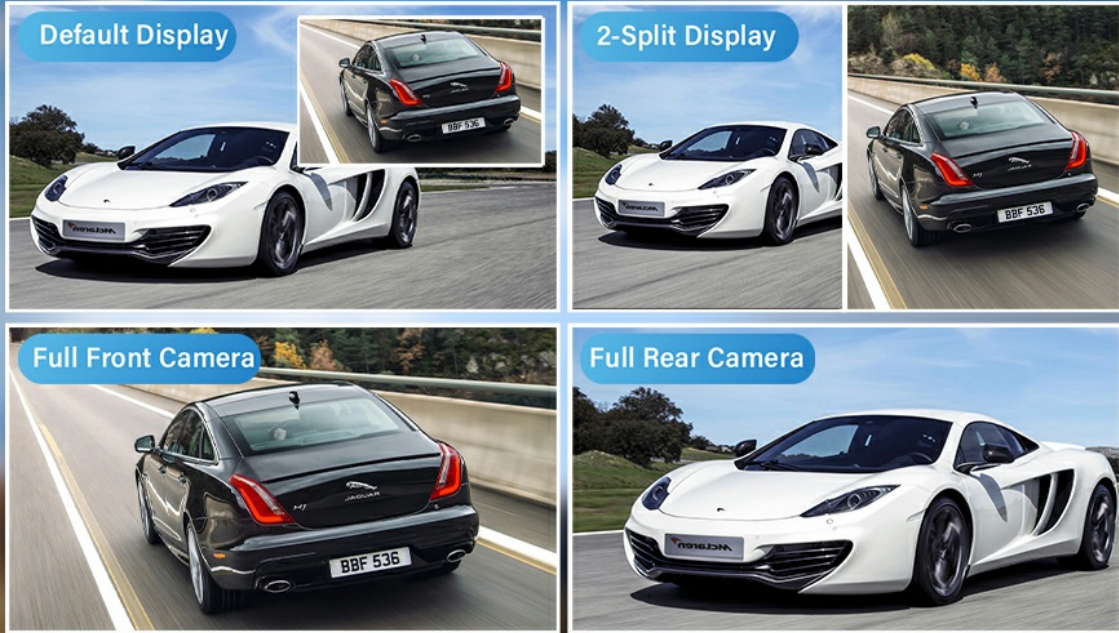


Image: Further illustration of screen switching options.

ADVANCED FEATURES

1. Loop Recording & Evidence Protection

The dash cam records video in continuous loops. When the SD card is full, the oldest unlocked video files are automatically overwritten by new recordings. Important footage can be manually locked or automatically locked by the G-Sensor to prevent overwriting.



Image: Seamless loop recording process, showing how locked videos are preserved.



Image: G-Sensor automatically locks video during an accident.

2. G-Sensor & Accident Lock

The built-in 3-axis G-Sensor detects sudden movements or impacts. In the event of a collision, it automatically saves and locks the current video file, preventing it from being overwritten during loop recording. You can also manually lock a video by pressing the designated lock button.

3. 24H Parking Monitor

When your vehicle is parked, the parking monitor feature provides continuous protection. If the dash cam detects vibration or impact, it will automatically power on and begin recording. This feature requires a continuous power supply (e.g., hardwire kit, sold separately) to function for 24 hours.

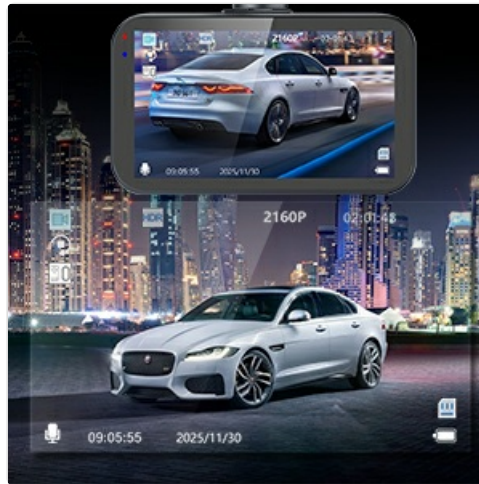


Image: The 24-hour parking monitor provides continuous vehicle surveillance.

4. Super Night Vision & WDR/HDR

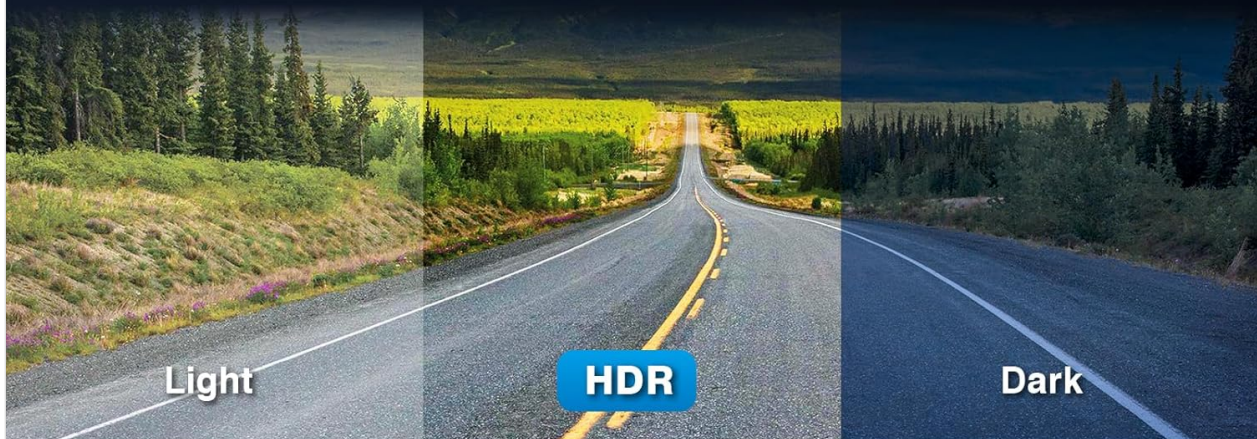
The Miden S9 dash cam features an f1.5 aperture, a large 1/2.7" CMOS image sensor, and WDR (Wide Dynamic Range) and HDR (High Dynamic Range) technologies. These features work together to improve image clarity and color accuracy, ensuring clear recordings even in low-light conditions or at night, capturing details like license plates.



Image: Super Night Vision captures clear details in low light.

HDR Brightness Automatic Correction

The WDR & HDR function further enhances the color richness while restoring the reality, and the recording is clearer.



Reversing Image Assist

When reverse gear is engaged, the reversing image can be automatically switched, and the large wide-angle field of view makes it easy for novices to reverse the car into the garage.

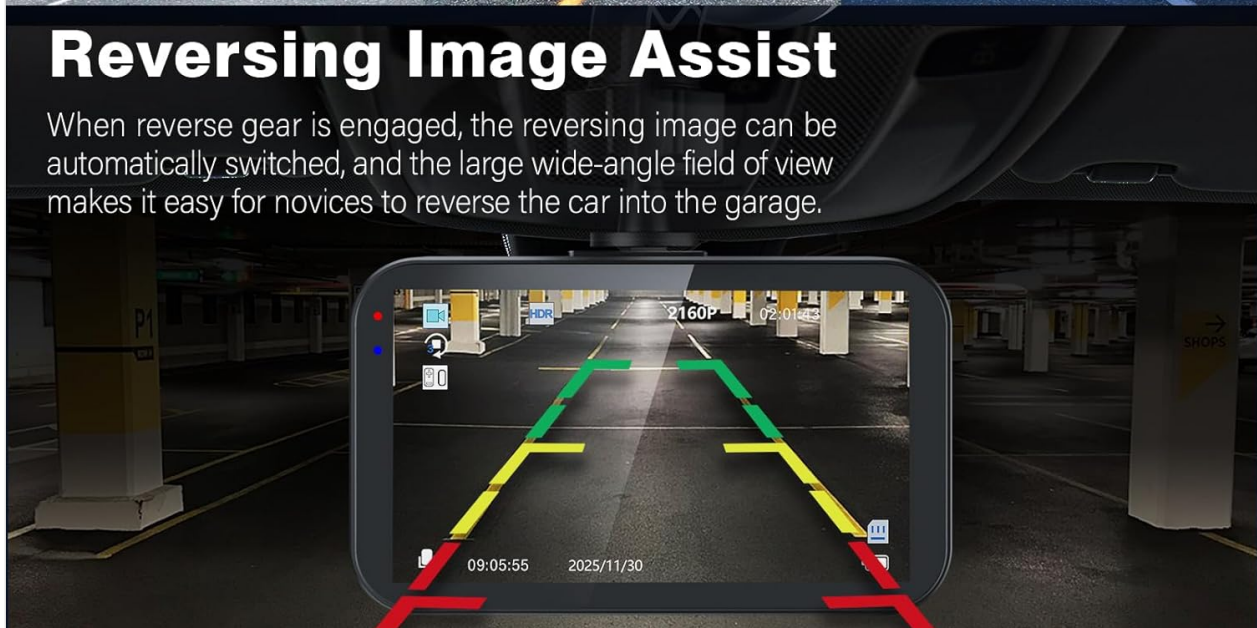
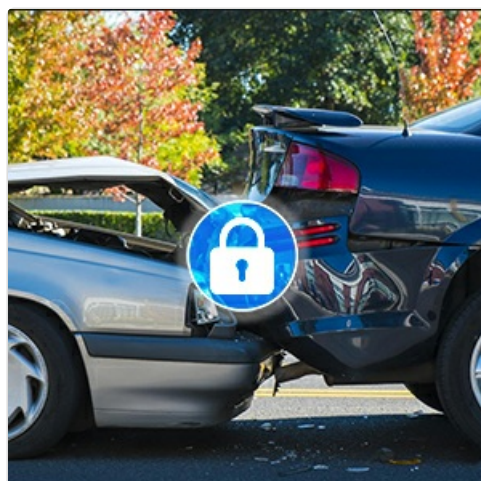


Image: HDR technology ensures balanced exposure in varying light conditions.

5. Reversing Image Assist

When the vehicle is shifted into reverse gear, the dash cam automatically switches to display the rear camera's view on the screen. This view includes parking guidelines, assisting the driver in safely reversing and parking.



6. Official Product Video

Your browser does not support the video tag.

Video: Miden S9 4K+4K Dash Cam Front and Rear with 64G SD Card. This video demonstrates the key features and functionality of the dash cam.

MAINTENANCE

1. SD Card Formatting

It is recommended to format the SD card regularly (e.g., once a month) to ensure optimal performance and prevent data corruption. This can be done through the dash cam's menu settings. Formatting will erase all data on the card, so back up any important files first.

2. Cleaning the Lenses and Screen

Gently wipe the camera lenses and the IPS screen with a soft, lint-free cloth. Avoid using abrasive cleaners or solvents that could damage the surfaces.

TROUBLESHOOTING

- **Dash Cam does not power on:**

Ensure the car charger is properly connected to both the dash cam and the vehicle's power outlet. Check if the vehicle's power outlet is functioning.

- **Recording stops unexpectedly:**

Check if the SD card is full or corrupted. Format the SD card. Ensure the SD card is a high-speed Class 10 or higher.

- **Video quality is poor:**

Clean the camera lenses. Ensure the protective film has been removed from the lenses. Check menu settings for video resolution and adjust if necessary.

- **Date and time are incorrect:**

Access the system settings in the menu to manually set the correct date and time.

- **Rear camera not displaying:**

Ensure the rear camera cable is securely connected to both the rear camera and the main dash cam unit.

SPECIFICATIONS

Feature	Detail
Model Name	S9
Video Capture Resolution	2160P+2160P (Dual 4K)

Front Field Of View	176 Degrees
Rear Field Of View	160 Degrees
Screen Size	3.5 inches IPS
Connectivity Technology	Type-C
Image Sensor	Sony STARVIS IMX675 CMOS
Special Features	4K+4K Front And Rear, Free 64G SD Card, UFO Rear Camera Design, Reversing Image Assist, Dual Parking Mode, Super Infrared Night Vision, F1.5 Super Aperture, 336° Super Wide Angle, Loop Recording, 3-Axis G-sensor, WDR & HDR
Mounting Type	Windshield Mount
Product Dimensions	3 x 1.5 x 1 inches
Item Weight	13.7 ounces
Batteries	1 Lithium Ion battery (included)

WARRANTY AND SUPPORT

Miden provides a 10-year free warranty for this product. Additionally, lifetime professional technical support is available. If you encounter any issues or have questions regarding your Miden S9 Dual 4K Dash Cam, please do not hesitate to contact our customer service team for assistance.