

Manuals+

[Q & A](#) | [Deep Search](#) | [Upload](#)

Manuals.plus /

› **SUNCROWN** /

› SUNCROWN 16lbs Portable Twin Tub Semi-Automatic Washing Machine User Manual

SUNCROWN B0FXTX345R

SUNCROWN 16lbs Portable Twin Tub Semi-Automatic Washing Machine User Manual

Brand: SUNCROWN | Model: B0FXTX345R

1. INTRODUCTION

Thank you for choosing the SUNCROWN 16lbs Portable Twin Tub Semi-Automatic Washing Machine. This compact and energy-efficient appliance is designed for convenient laundry care in smaller living spaces such as apartments, dorms, and RVs. This manual provides essential information for safe operation, proper setup, effective use, and routine maintenance to ensure the longevity and optimal performance of your washing machine.



Figure 1: SUNCROWN Portable Twin Tub Washing Machine

2. IMPORTANT SAFETY INSTRUCTIONS

Please read all instructions carefully before using the appliance and retain them for future reference. Failure to follow these instructions may result in electric shock, fire, or serious injury.

- Ensure the power supply voltage matches the rating label on the appliance.
- Do not operate the machine with a damaged power cord or plug.
- Keep the appliance away from heat sources and direct sunlight.
- Do not immerse the machine in water or spray water directly onto it.
- Always unplug the machine before cleaning or performing any maintenance.
- Keep children and pets away from the machine during operation.
- Do not overload the washing or spinning tubs.
- Ensure the spin tub cover is securely in place before starting the spin cycle.
- Place the machine on a stable, flat surface to prevent tipping.

3. PRODUCT OVERVIEW

The SUNCROWN Portable Washing Machine features a twin tub design, allowing for simultaneous washing and spin-drying. The control panel is located on the top of the unit for easy access.

3.1 Components and Controls



Figure 2: Control Panel and Tubs

- **Wash Timer:** Sets the duration of the wash cycle (up to 15 minutes).
- **Wash Selector:** Choose between 'Gentle', 'Normal', or 'Drain' modes.
- **Spin Timer:** Sets the duration of the spin cycle (up to 5 minutes).
- **Washing Tub:** For washing clothes. Features a built-in lint filter.
- **Spin Tub:** For spin-drying clothes. Includes a safety cover.
- **Water Inlet:** Connection point for the water supply hose.
- **Drain Hose:** For expelling dirty water.

Portable and Powerful, This Compact Washer Fits Anywhere

Motor Home



Balcony



Homestay

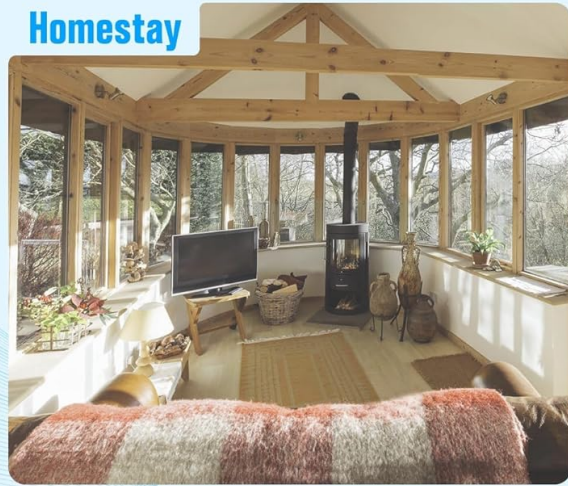


Figure 3: Internal Features and Motor

4. SPECIFICATIONS

Feature	Detail
Brand	SUNCROWN
Product Dimensions	13.38"D x 22"W x 25.2"H
Capacity	16 Pounds
Installation Type	Freestanding
Special Feature	High Efficiency
Color	Blue
Control Console	Push Button
Access Location	Top Load
Material Type	Plastic

5. SETUP

5.1 Unpacking and Placement

- Carefully remove the washing machine from its packaging.
- Place the machine on a firm, level surface to minimize vibration and noise during operation. Ensure it is near a water source and a drain.



Figure 4: Optimal Placement in a Bathroom

5.2 Connecting Water Supply

- Connect the provided water inlet hose to the water inlet port on the top left side of the washing machine.
- Attach the other end of the water inlet hose to a suitable faucet. Ensure a tight connection to prevent leaks.

5.3 Positioning the Drain Hose

- Position the drain hose to direct wastewater into a sink, bathtub, or floor drain.
- Ensure the drain hose is not kinked or obstructed to allow for proper water drainage. The drain pump

ensures quick, mess-free removal of dirty water.



Figure 5: Drain Hose Connection

Video 1: SUNCROWN Portable Washing Machine Setup and Operation Overview. This video demonstrates connecting the water inlet hose, filling the wash tub, and the draining process.

6. OPERATING INSTRUCTIONS

6.1 Washing Clothes

1. **Load Clothes:** Open the lid of the washing tub and place your clothes inside. Do not overload; ensure clothes can move freely in the water. The washing tub has an 8 lbs capacity.
2. **Add Water:** Turn on the faucet connected to the water inlet hose to fill the washing tub with water to the desired level.
3. **Add Detergent:** Add the appropriate amount of laundry detergent directly into the washing tub.
4. **Select Wash Mode:** Turn the 'Wash Selector' knob to either 'Gentle' for delicate items or 'Normal' for regular loads.
5. **Set Wash Timer:** Turn the 'Wash Timer' knob to set the desired wash duration (up to 15 minutes). The machine will start automatically.
6. **Drain Water:** Once the wash cycle is complete, turn the 'Wash Selector' knob to 'Drain' to empty the dirty

water through the drain hose.



Figure 6: Loading Clothes into the Washing Tub

6.2 Spin Drying Clothes

1. **Transfer Clothes:** After draining the wash water, transfer the wet clothes from the washing tub to the spin tub. The spin tub has a 4 lbs capacity.
2. **Secure Cover:** Place the spin tub cover (partition) on top of the clothes inside the spin tub to prevent items from flying out during spinning.
3. **Set Spin Timer:** Close the spin tub lid and turn the 'Spin Timer' knob to set the desired spin duration (up to 5 minutes). The machine will start spinning. The integrated spin cover minimizes vibration. For added safety, the automatic lid lock halts operation when opened.
4. **Remove Clothes:** Once the spin cycle is complete, remove the clothes. They will be significantly drier, reducing drying time.

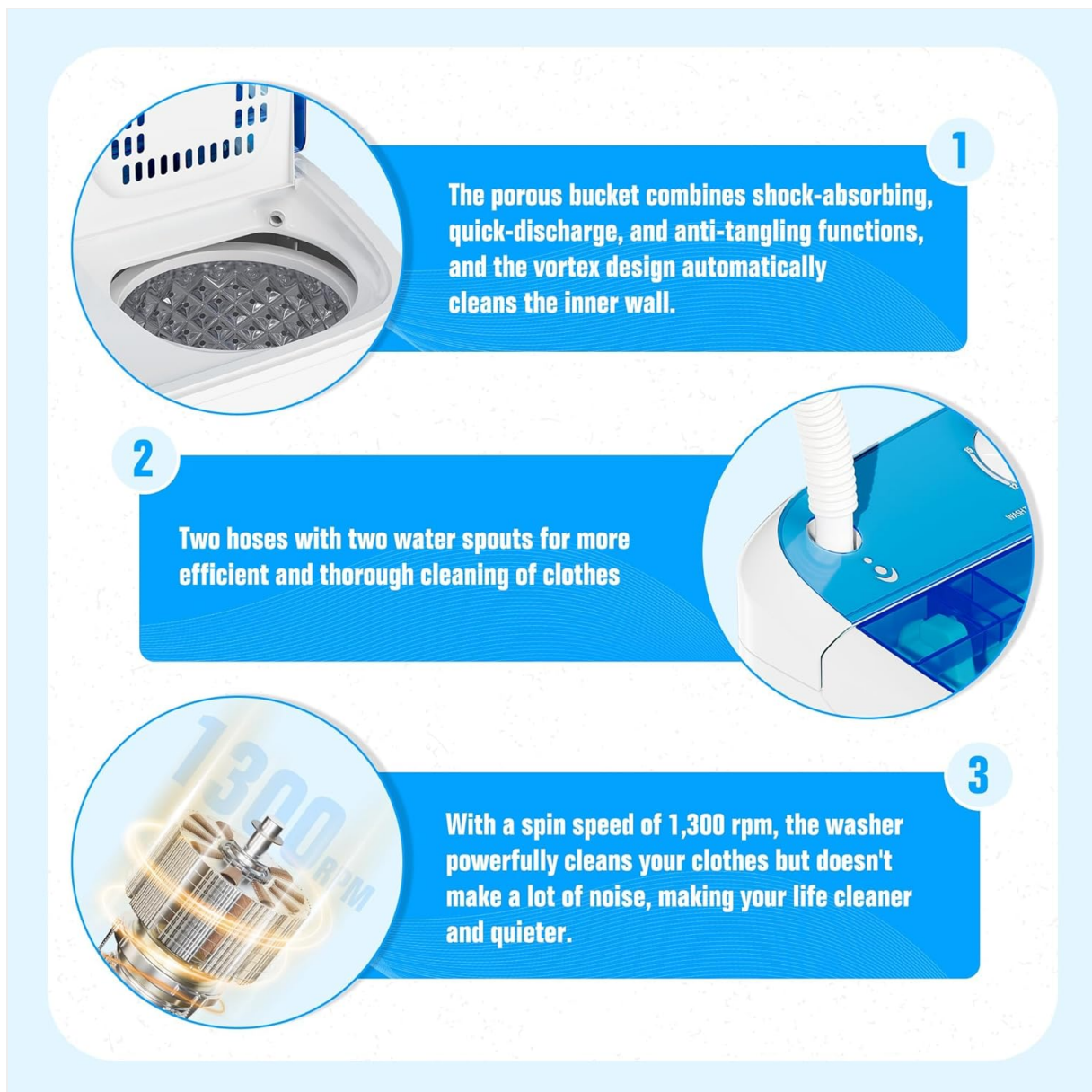


Figure 7: Clothes in the Spin Tub

7. MAINTENANCE

7.1 Cleaning the Lint Filter

- The washing tub has a built-in lint filter. Regularly remove and clean the lint filter to maintain washing efficiency.
- Rinse the filter under running water to remove accumulated lint and debris.

7.2 General Cleaning

- Wipe the exterior of the machine with a soft, damp cloth. Do not use abrasive cleaners or solvents.
- Ensure the interior of both tubs is clean and dry after each use to prevent mold and odors.

8. TROUBLESHOOTING

Problem	Possible Cause	Solution
---------	----------------	----------

Machine does not start	Not plugged in; Power outage; Timer not set	Check power connection; Restore power; Set timer correctly
Water not draining	Drain hose kinked/blocked; Drain selector not set to 'Drain'	Straighten hose, clear blockage; Set selector to 'Drain'
Excessive vibration/noise	Uneven load in spin tub; Machine not on level surface	Redistribute clothes evenly; Adjust machine's position
Clothes not clean	Overloaded tub; Insufficient detergent; Incorrect wash mode	Reduce load size; Use recommended detergent amount; Select appropriate wash mode

9. WARRANTY AND SUPPORT

For warranty information or technical support, please refer to the documentation included with your purchase or contact SUNCROWN customer service. Protection plans are available for 2-Year, 3-Year, and Complete Protect options, offering extended coverage for your appliance.