

Manuals.plus /

› NAPRE /

› NAPRE Foldable Massage Gun with Heat and Extended Handle Instruction Manual

NAPRE Foldable Massage Gun with Heat and Extended Handle

NAPRE Foldable Massage Gun with Heat and Extended Handle

Instruction Manual

IMPORTANT SAFETY INSTRUCTIONS

Please read all instructions carefully before using this product. Failure to follow these instructions may result in injury or damage to the device.

- This device is intended for adult use only. Keep out of reach of children and pets.
- Do not immerse the device in water or other liquids.
- Do not operate the device near water or in excessively humid environments.
- Always unplug the device from the power source before cleaning or when not in use.
- Do not use the device on open wounds, swollen areas, or areas with skin irritation.
- Consult a physician before use if you have any medical conditions, including but not limited to pregnancy, diabetes, heart disease, or if you have a pacemaker.
- Do not use the device for more than 15 minutes on a single body area.
- If you experience pain or discomfort, discontinue use immediately.
- Use only the provided charging cable and adapter.
- Do not attempt to disassemble or modify the device.

PRODUCT OVERVIEW

The NAPRE Foldable Massage Gun is a versatile percussion massage device designed for deep tissue muscle relaxation and recovery. It features an innovative foldable design, an extended handle for hard-to-reach areas, and a specialized heat head for enhanced therapeutic benefits.



Image: The NAPRE Foldable Massage Gun demonstrating its 2-in-1 compact body and extended leverage modes. The image highlights the foldable design with 5 adjustable angles and a retractable metal extension handle.

Key Features:

- **Foldable Design:** Allows for compact storage and portability.
- **Extended Handle:** Retractable 8.66-inch non-slip metal handle for reaching all body areas.
- **Adjustable Angles:** 5 adjustable angles for ergonomic use.
- **Heated Massage Head:** Delivers soothing heat (102°F-113°F / 39°C-45°C) with 3 adjustable levels and a 3-second heat-up time.
- **Powerful Percussion:** High-torque brushless motor with 1400-3000 RPM and 10mm amplitude.
- **Quiet Operation:** Operates at under 55dB.
- **32 Speed Settings:** Customizable intensity for various massage needs.
- **LED Display:** Intuitive 0.9" LED screen for control.
- **LED Light Therapy:** Integrated 20 x 660nm LEDs for targeted comfort.

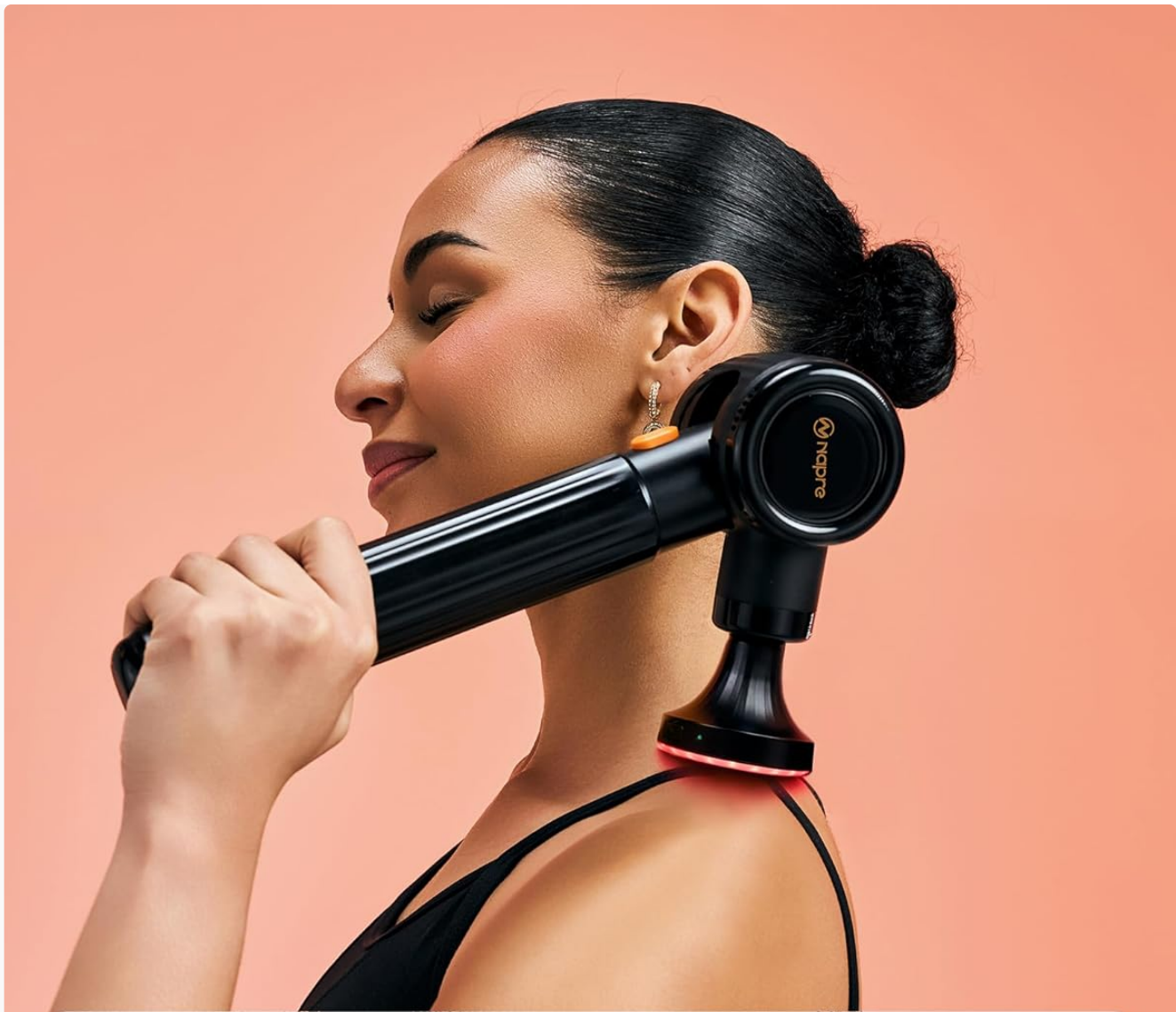
1. Charging the Device

Before first use, fully charge the massage gun. Connect the provided charging cable to the charging port on the device and plug the adapter into a standard wall outlet. The LED display will indicate the charging status. A full charge typically takes 3-4 hours.

2. Adjusting the Handle and Angle

The NAPRE massage gun features a foldable design and an extendable handle for versatile use.

- **Folding/Unfolding:** Gently fold or unfold the device at its hinge until it locks into place.
- **Adjusting Massage Angle:** Press the button located near the massage head to adjust the angle. There are 3 adjustable massage angles. Release the button to lock the desired angle.
- **Extending the Handle:** Pull the handle outwards to extend it for reaching your back or other difficult areas. Push it back in to retract. The handle extends up to 8.66 inches.



3 Adjustable Massage Angles



Press the button to adjust the angle, release to lock it.

Image: A visual guide demonstrating how to adjust the 3 massage angles of the NAPRE massage gun by pressing a button and rotating the head.

8.66" Extended Anti-Slip Handle

Self-Massage Made Simple.

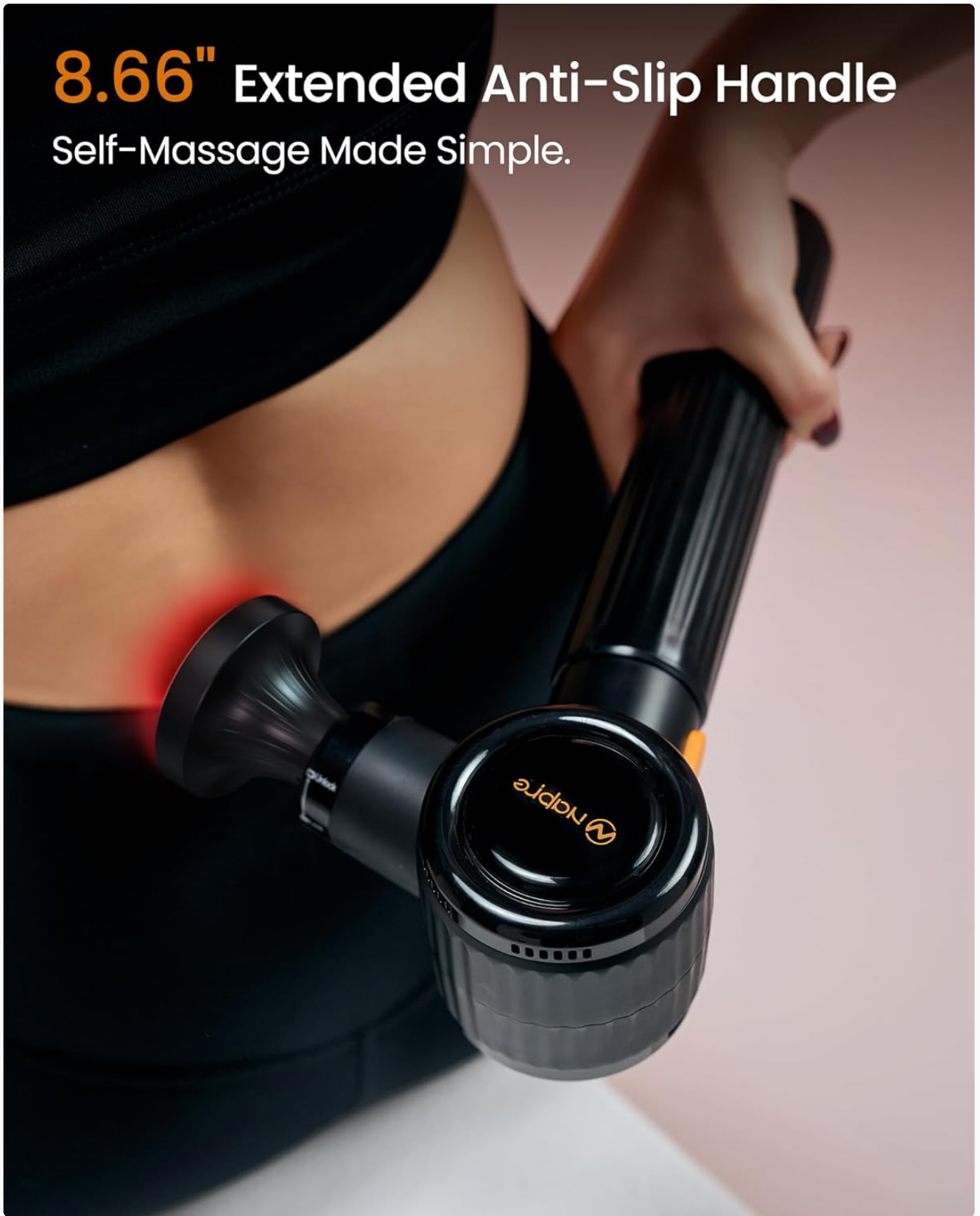


Image: The NAPRE massage gun with its 8.66-inch extended anti-slip handle, illustrating how it simplifies self-massage for hard-to-reach areas like the lower back.

OPERATING INSTRUCTIONS

1. Powering On/Off

Press and hold the power button on the device for 2 seconds to turn it on or off. The LED screen will illuminate upon activation.

2. Adjusting Speed and Intensity

Once powered on, use the single-roller control to adjust the massage speed. The device offers 32 speed settings, displayed on the 0.9" LED screen. Rotate the roller up to increase speed and down to decrease speed.

3. Using the Heat Function

The massage gun features a specialized heat head. To activate the heat function, press the dedicated heat button. The heat head will warm up to the target temperature in approximately 3 seconds. There are 3 adjustable heat levels:

- **Green Light:** 102.2°F (39°C)
- **Orange Light:** 108°F (42°C)
- **Red Light:** 113°F (45°C)

Press the heat button repeatedly to cycle through the heat levels or turn the heat function off.

Innovative Heating Massage

Pain relief has never been easier.



Green Light
102.2°F (39°C)



Orange Light
108°F (42°C)



Red Light
113°F (45°C)

Image: A close-up of the innovative heating massage head, showing the green, orange, and red light indicators corresponding to the three adjustable temperature levels (102.2°F, 108°F, 113°F).

3S Fast Warmth Relief Massage



Impact Combined with Heat

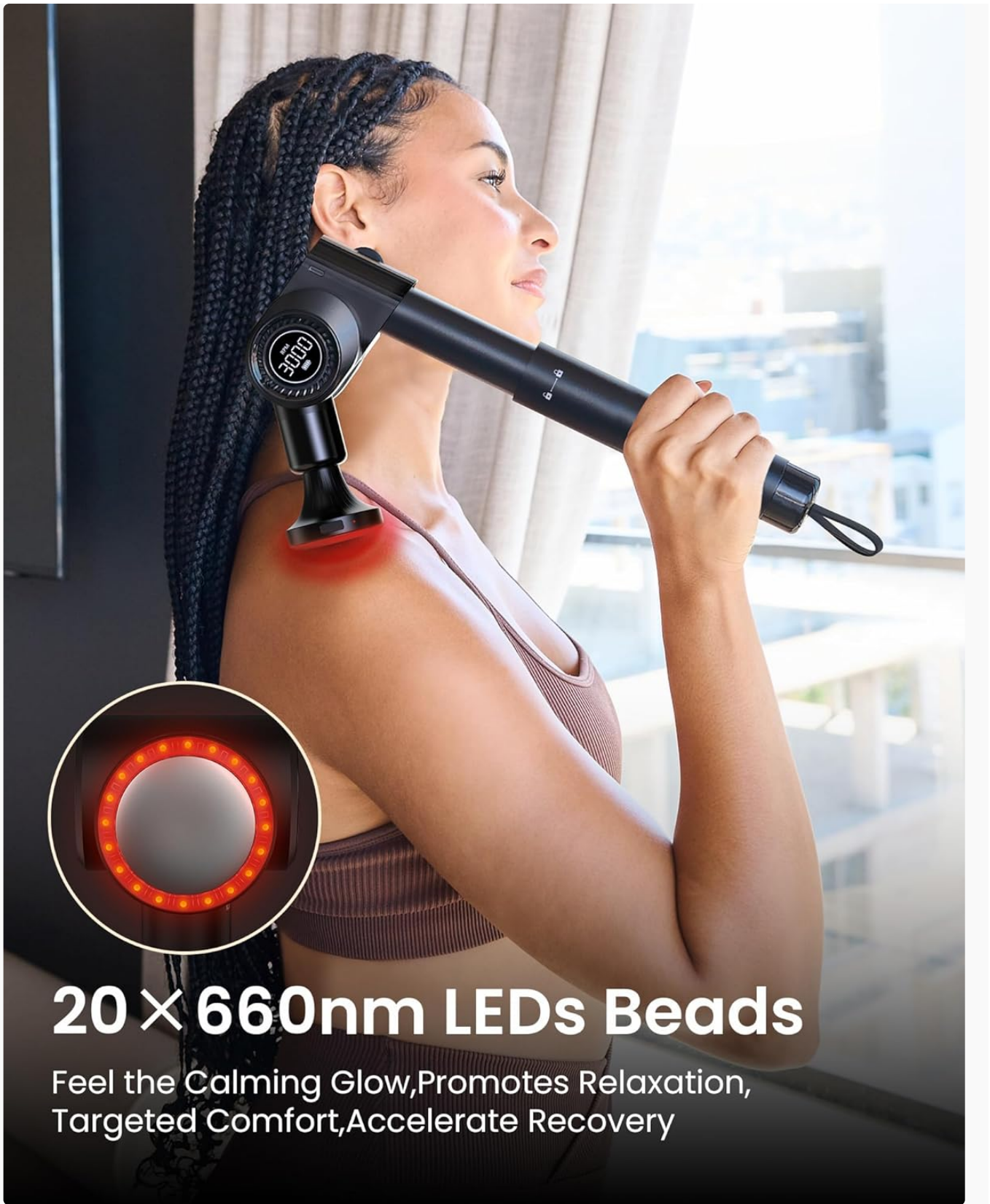
- Eases Stiffness
- Alleviating pain
- Accelerates Recovery
- Improves flexibility



Image: The massage gun being used on a person's back, with a thermal overlay illustrating the impact combined with heat, indicating temperatures between 102.2-113°F. This highlights how heat eases stiffness, alleviates pain, accelerates recovery, and improves flexibility.

4. Using the LED Light Therapy

The massage head also integrates 20 x 660nm LED beads. To activate this feature, press the dedicated LED light button. This function promotes relaxation and targeted comfort.



20 × 660nm LEDs Beads

Feel the Calming Glow, Promotes Relaxation,
Targeted Comfort, Accelerate Recovery

Image: A close-up of the massage gun head with the 20 x 660nm LED beads illuminated, emphasizing their role in promoting relaxation and accelerating recovery.

5. Massage Techniques and Areas

Apply the massage gun to the desired muscle groups. Move the device slowly over the muscles, applying gentle pressure. The extended handle allows you to easily reach areas such as your back, neck, shoulders, waist, arms, and legs. Avoid bony areas and joints. Do not hold the device stationary on one spot for too long.

MAINTENANCE

1. Cleaning the Device

After each use, turn off the device and unplug it. Wipe the surface of the massage gun with a soft, slightly damp cloth. Do not use abrasive cleaners or immerse the device in water.

2. Storage

Store the massage gun in a cool, dry place, away from direct sunlight and extreme temperatures. Keep it in its folded, compact state for optimal storage.

3. Battery Care

To prolong battery life, avoid fully discharging the battery frequently. Charge the device regularly, even if not in frequent use, to maintain battery health.

TROUBLESHOOTING

Problem	Possible Cause	Solution
Device does not turn on.	Battery is low or depleted.	Charge the device fully.
Device stops during use.	Battery is low. Overheating protection activated.	Recharge the device. Allow the device to cool down for 30 minutes before resuming use.
Heat function not working.	Heat function not activated. Device malfunction.	Ensure the heat button has been pressed. If the issue persists, contact customer support.
Unusual noise or vibration.	Foreign object obstruction. Internal malfunction.	Turn off the device and inspect for any obstructions. If none, discontinue use and contact customer support.

SPECIFICATIONS

- **Brand:** NAPRE
- **Model:** Foldable Massage Gun with Heat and Extended Handle
- **Heat Levels:** 3 (102.2°F / 39°C, 108°F / 42°C, 113°F / 45°C)
- **Heat-Up Time:** 3 seconds
- **Adjustable Angles:** 5 (foldable design)
- **Handle Extension:** 8.66 inches (retractable)
- **Motor Type:** High-torque brushless
- **Percussion Speed:** 1400-3000 RPM
- **Amplitude:** 10mm
- **Noise Level:** < 55dB
- **Speed Settings:** 32
- **Display:** 0.9" LED screen
- **LED Light Therapy:** 20 x 660nm LEDs
- **ASIN:** B0FXM1599T

- **First Available Date:** September 15, 2025

WARRANTY AND SUPPORT

For warranty information and customer support, please refer to the documentation included with your purchase or visit the official NAPRE website. You may also contact the seller directly through the Amazon platform.

NAPRE Store: Visit the NAPRE Store on Amazon