

TOOLTOP TT-Awithz-UK3-10000mAh

TOOLTOP Awithz UK3 10000mAh Portable Spot Welder User Manual

Model: TT-Awithz-UK3-10000mAh

1. IMPORTANT SAFETY INSTRUCTIONS

Read all safety warnings and instructions before using this product. Failure to follow these instructions may result in electric shock, fire, or serious injury.

- Always wear appropriate personal protective equipment, including safety glasses, gloves, and protective clothing.
- Ensure the work area is well-ventilated and free from flammable materials.
- Do not operate the spot welder in damp or wet conditions.
- Keep children and unauthorized persons away from the operating area.
- Do not touch the welding electrodes or work piece immediately after welding, as they will be hot.
- Use only the provided or recommended accessories.
- Disconnect the power supply before performing any maintenance or cleaning.
- Do not attempt to repair or modify the device yourself. Contact qualified service personnel.
- This device contains a lithium battery. Do not expose to high temperatures or direct sunlight.

2. PRODUCT OVERVIEW

The TOOLTOP Awithz UK3 is a portable, high-power spot welder designed for DIY nickel sheet welding, particularly for 18650 lithium battery packs. It features a compact design, Type-C charging, and multiple welding modes for precise and efficient operation.

Key Features:

- **Compact Design:** Small body with Type-C charging for portability.
- **Multiple Welding Modes:** Knob control for preheating, intermittent welding, gear position, and trigger time adjustments.
- **High Power Output:** 13860W for fast, precise welding.
- **Three Welding Modes:** Manual, automatic, and foot pedal welding options.
- **Ultra-Low Power Consumption:** Energy-efficient operation.
- **Detachable Soldering Pen:** Allows for easy replacement of welding needles without changing the entire rod.

- **High Conductivity Copper Bar:** Ensures stable current and strong welds.

AWithZ

Only use brand new A-grade battery cells
Professional welding for power batteries

Detachable and replaceable needle soldering pen

Intelligent Handheld Pen



**Ten thousand
precise adjustments**

**Weld firmly with 0.25
pure nickel and 0.4 nickel plating**

Figure 2.1: Awithz UK3 Portable Spot Welder with its main components and highlighted features.

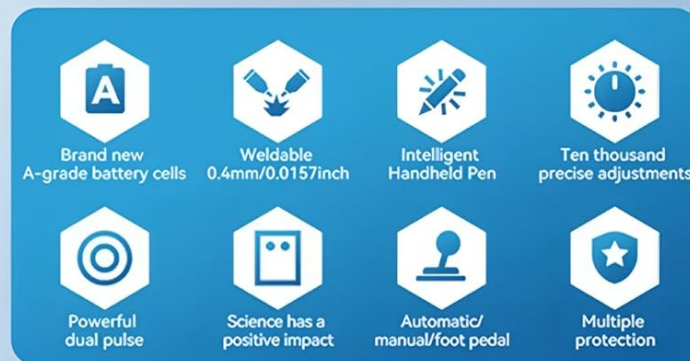
This image displays the Awithz UK3 spot welder unit, two welding pens, a foot pedal, and several 18650 battery cells. Key features such as "Detachable and replaceable needle soldering pen" and "Intelligent Handheld Pen" are highlighted, along with the device's ability to "Weld firmly with 0.25 pure nickel and 0.4 nickel plating."

UK3 **Knob style**

Innovation Plan for Welding of Power Batteries

Weld firmly with 0.25mm/0.00984inch pure nickel
and 0.4mm/0.0157inch nickel plating!

NEW UK3 Knob adjustment style
Innovation Plan for Welding of Power Batteries



Brand new
A-grade battery cells

Weldable
0.4mm/0.0157inch

Intelligent
Handheld Pen

Ten thousand
precise adjustments

Powerful
dual pulse

Science has a
positive impact

Automatic/
manual/foot pedal

Multiple
protection

Figure 2.2: UK3 Knob style spot welder with icons representing its core functionalities.

This image showcases the UK3 spot welder and lists its innovative features through icons: "Brand new A-grade battery cells," "Weldable 0.4mm/0.0157inch," "Intelligent Handheld Pen," "Ten thousand precise adjustments," "Powerful dual pulse," "Science has a positive impact," "Automatic/manual/foot pedal," and "Multiple protection."

3. PACKAGE CONTENTS

Verify that all items listed below are present in your package:

- 1 x TT-Awithz-UK3-10000mAh Spot Welder Unit
- 1 x Pedal board (Foot Pedal)
- 1 x Nickel coil
- 1 x Charging cable (Type-C)
- 1 pair of spare soldering pins
- 1 x Sandpaper

AWithZ

Pioneer in the portable spot welding machine industry



Figure 3.1: All accessories included with the Awithz UK3 Spot Welder.

This image clearly displays the main spot welding unit along with its accessories: a foot pedal, a roll of nickel strip, a Type-C charging cable, a pair of spare welding pins, and a piece of sandpaper.

4. SETUP INSTRUCTIONS

1. **Charge the Device:** Connect the spot welder to a Type-C charger using the provided charging cable. Ensure the device is fully charged before first use.
2. **Connect Welding Pens:** Insert the welding pens securely into the designated ports on the front of the spot welder. Ensure a firm connection.
3. **Connect Foot Pedal (Optional):** If using the foot pedal welding mode, connect the foot pedal to its dedicated port.
4. **Prepare Nickel Strip:** Cut the nickel strip to the required length for your welding application.
5. **Prepare Workpiece:** Ensure the surfaces to be welded (e.g., battery terminals, nickel strip) are clean and free from

oxidation. Use the included sandpaper if necessary.

Intelligent control spot welding, precise and durable The soldering pen is detachable, and the needle cannot be replaced without changing the rod

UK3 spot welding machine golden partner, intelligent manual control spot welding pen
Real expensive aluminum oxide copper welding needle, detachable welding pen,
no need to change the rod when changing the needle. Press and weld, play
with precision welding of 0.05/0.00197inch~0.4mm0.0157inch

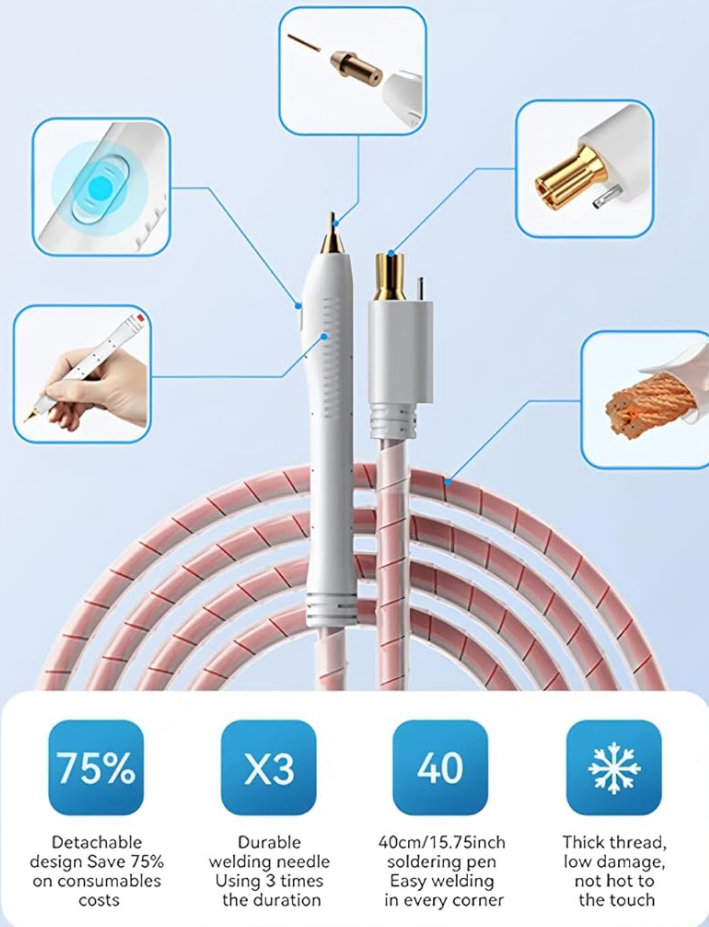


Figure 4.1: Illustration of the intelligent control spot welding pen with detachable needle.

This image highlights the intelligent control spot welding pen, emphasizing its detachable and replaceable needle design. It shows how the needle can be easily changed without replacing the entire pen rod, contributing to cost savings and durability. The image also illustrates the internal high conductivity copper bar for stable current.

5. OPERATING INSTRUCTIONS

The Awithz UK3 offers multiple welding modes and adjustable settings for optimal performance.

5.1 Powering On/Off

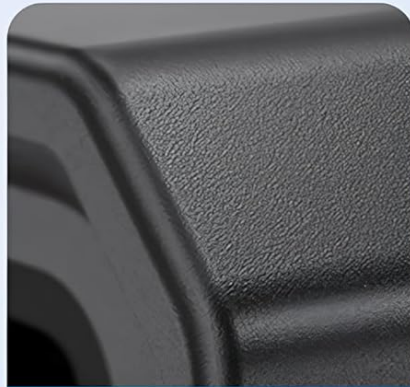
- To power on, press and hold the power button until the display illuminates.
- To power off, press and hold the power button until the display turns off.

5.2 Mode Selection and Adjustments

Use the knob and buttons on the device's control panel to navigate and adjust settings.

Minimalist design, exquisite craftsmanship

- Minimalist streamline, elegant black matte, technological aesthetics
- 300g lightweight and portable
- Type-C fast charging worry free pocket level welding machine, one hand control



Minimally streamlined
black matte finish



Pocket level welding machine
mastered by one hand



Type-C fast charging
worry free



300g lightweight
and portable

Figure 5.1: Close-up of the Awithz UK3 control panel and Type-C charging port.

This image provides a detailed view of the spot welder's control panel, showing the adjustment knob, display screen, and buttons for settings like "Mode," "Preheat," "Pause," "Gear," "Trigger Time," and "Switch Welding." It also highlights the Type-C fast charging port and the device's minimalist design.

- **Mode (Manual/Automatic/Foot Pedal):** Select the desired welding trigger mode.
 - **Manual:** Trigger welding by pressing a button on the welding pen.
 - **Automatic:** Welding triggers automatically when both pen tips make contact with the workpiece.
 - **Foot Pedal:** Welding triggers when the foot pedal is pressed.
- **Preheat:** Adjust the preheating time for better weld quality, especially on thicker materials.
- **Intermittent/Pause:** Set the pause time between welding pulses for controlled heat distribution.

- **Gear Position:** Adjust the welding power level (e.g., 1-99) to suit the thickness of the nickel strip and battery type. Start with lower settings and increase gradually.
- **Trigger Time:** Fine-tune the duration of the welding pulse.

5.3 Welding Procedure

1. Place the nickel strip firmly onto the battery terminal or workpiece.
2. Position the tips of the welding pens onto the nickel strip, ensuring good contact and even pressure.
3. Initiate the weld according to your selected mode (manual button, automatic contact, or foot pedal).
4. Observe the weld quality. Adjust "Gear Position," "Preheat," and "Trigger Time" as needed to achieve a strong, clean weld.
5. Allow the welded area to cool before handling.

6. MAINTENANCE

- **Cleaning:** Regularly clean the welding pen tips and the device casing with a dry, soft cloth. Ensure no metal dust or debris accumulates.
- **Electrode Replacement:** If the welding pen tips become worn or damaged, replace them with new ones. The detachable design allows for easy replacement.
- **Storage:** Store the spot welder in a cool, dry place away from direct sunlight and moisture.
- **Battery Care:** For optimal battery life, avoid fully discharging the device frequently. Charge it periodically if not used for extended periods.

7. TROUBLESHOOTING

Problem	Possible Cause	Solution
No power/Device won't turn on	Low battery; Power button not pressed long enough; Device fault.	Charge the device; Press and hold the power button for 3-5 seconds; Contact support.
Weak or inconsistent welds	Low power setting (Gear); Dirty or worn welding tips; Poor contact with workpiece; Insufficient preheat/trigger time.	Increase Gear setting; Clean/replace welding tips; Ensure firm contact and pressure; Adjust Preheat/Trigger Time.
Excessive sparks or burning	Too high power setting (Gear); Overlapping welds; Incorrect material.	Decrease Gear setting; Avoid overlapping welds; Ensure correct nickel strip thickness.
Welding pens get hot quickly	Continuous use; High power setting; Poor contact.	Allow device to cool; Reduce power setting; Ensure good contact.

8. SPECIFICATIONS

Feature	Detail
Model Number	TT-Awithz-UK3-10000mAh

Feature	Detail
Brand	TOOLTOP
Battery Capacity	10000mAh (Integrated Lithium Battery)
Charging Port	Type-C
Max Welding Power	13860W
Weldable Nickel Thickness	Up to 0.4mm (0.0157 inch) nickel plating, 0.25mm pure nickel
Welding Modes	Manual, Automatic, Foot Pedal
Dimensions	Approx. 10.05 x 15.8 x 4.8 cm (3.96 x 6.22 x 1.89 inches)
Weight	Approx. 300g (0.66 lbs)
Certifications	CE, RoHS

Size:

10.05*15.8*4.8cm
3.96*6.22*1.89inch

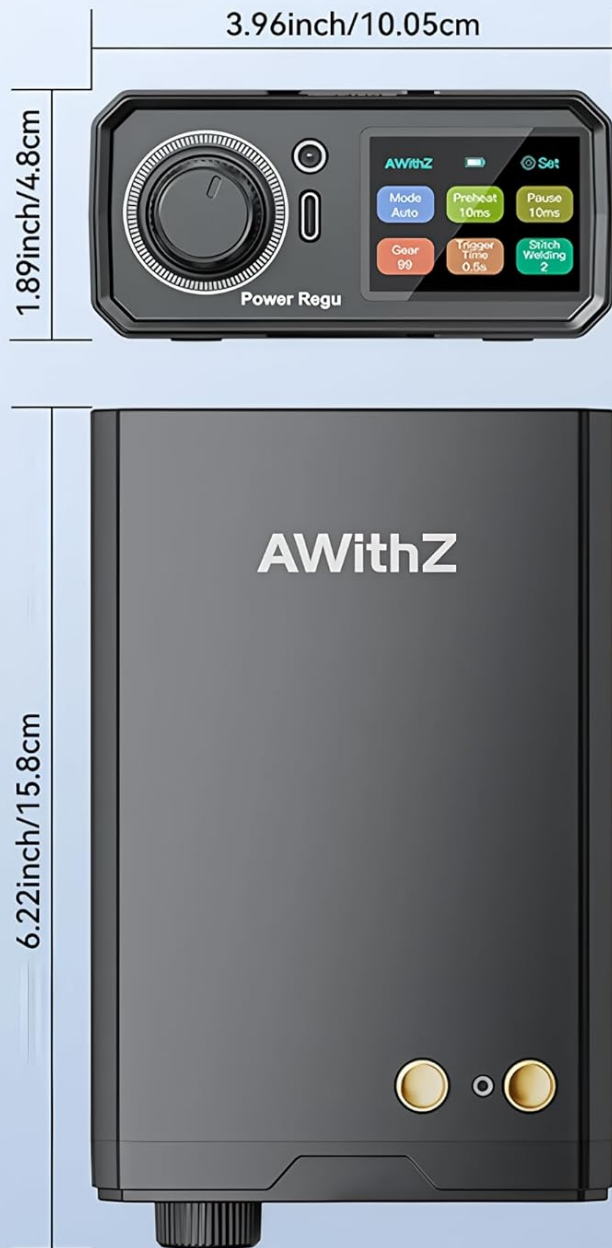
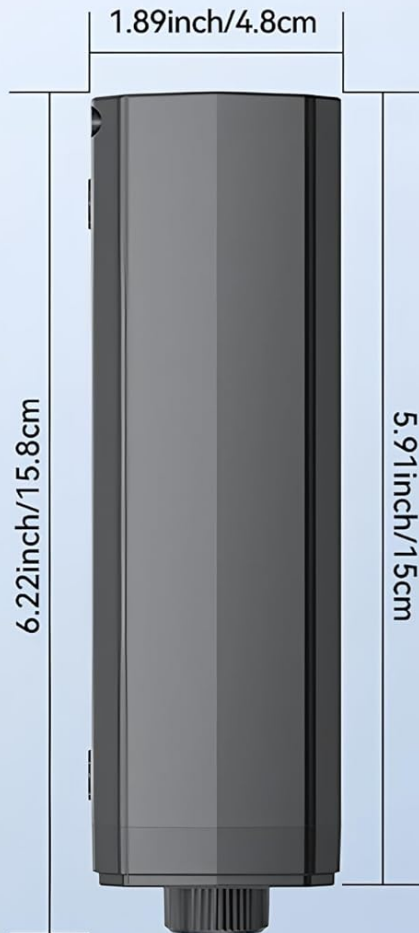


Figure 8.1: Detailed dimensions of the Awithz UK3 Spot Welder in centimeters and inches.

This image provides precise measurements of the Awithz UK3 spot welder, showing its length, width, and height in both centimeters and inches, illustrating its compact and portable form factor.

9. WARRANTY AND SUPPORT

This product comes with a 1-year EU Spare Part Availability Duration as per manufacturer specifications. For technical support, warranty claims, or service inquiries, please contact your retailer or the manufacturer directly. Please have your model number (TT-Awithz-UK3-10000mAh) and purchase information ready.

Manufacturer: TOOLTOP

