

DIGITEN WTC401

DIGITEN Gas Fireplace Remote Control Kit WTC401 User Manual

Model: WTC401

1. INTRODUCTION

This manual provides detailed instructions for the installation, operation, and maintenance of your DIGITEN Gas Fireplace Remote Control Kit, Model WTC401. This kit is designed to provide wireless control for millivolt valve gas fireplaces, offering ON/OFF, automatic thermostat, and timer functions for enhanced convenience and comfort.

2. SAFETY INFORMATION

Please read all safety warnings and instructions carefully before installation and operation to prevent injury or property damage.

- **Voltage Limit:** Do not use this remote-control system on applications with voltages above 24 Volts AC/DC and 1 amp current. Exceeding these limits can damage the unit and pose a safety hazard.
- **Heat Exposure:** The receiver unit must be installed away from high heat sources (above 130°F / 54°C) to ensure proper function and prevent damage.
- **Manual Shut-off:** For extended absences from home, it is recommended to manually turn off the fireplace at the gas valve for maximum safety.
- **Professional Installation:** If you are unsure about any part of the installation process, consult a qualified technician.
- **Battery Safety:** Always use the specified battery types and ensure correct polarity. Do not mix old and new batteries or different battery types. Dispose of used batteries responsibly.

3. PACKAGE CONTENTS

Verify that all components listed below are included in your package:



Figure 3.1: Contents of the DIGITEN Gas Fireplace Remote Control Kit.

- Remote Control (Transmitter)
- Receiver Box
- Wall Plate for Receiver
- Connection Wires
- Mounting Screws

4. PRODUCT OVERVIEW

4.1 Remote Control (Transmitter)

The remote control features a large, backlit LCD screen for clear display of current room temperature, desired set temperature, operating mode, and timer status. It operates wirelessly with a signal range of up to 65 feet (20 meters).

Figure 4.1: Remote Control LCD Display and Button Functions.

- **LCD Display:** Shows current room temperature, set temperature, temperature unit (°F/°C), timer, safety lock status, and battery low indicator.
- **MODE Button:** Cycles through ON, AUTO, and OFF operating modes.
- **TIMER Button:** Activates and adjusts the timer function.
- **Up/Down Arrows:** Adjusts set temperature and timer values.
- **Built-in Sensor:** The remote control contains the temperature sensor for thermostat operation.

4.2 Receiver

The receiver unit acts as a wireless switch for your fireplace. It connects directly to the millivolt valve and receives commands from the remote control. It features a manual ON/AUTO/OFF switch and a 'LEARN' button for pairing.



Figure 4.2: Receiver Box and Wall Plate.

- **ON/AUTO/OFF Switch:** Allows manual control of the fireplace directly from the receiver.
- **LEARN Button:** Used to establish communication between the remote and receiver.
- **Battery Compartment:** Houses 4 AA batteries for power.

5. SETUP AND INSTALLATION

5.1 Battery Installation

Batteries are not included in the kit and must be purchased separately.



Figure 5.1: Battery requirements for the remote and receiver.

- **Remote Control:** Requires 2 AAA batteries. Open the battery compartment on the back of the remote and insert the batteries, observing correct polarity.
- **Receiver:** Requires 4 AA batteries. Open the battery compartment on the receiver box and insert the batteries, observing correct polarity.

5.2 Receiver Wiring to Millivolt Valve

This system is designed for millivolt gas valve systems. It functions as an on/off switch and connects to the TH and TH/TP terminals of your millivolt valve.



Figure 5.2: Connecting the receiver to the millivolt gas valve.

1. Ensure the gas supply to the fireplace is turned off before beginning installation.
2. Locate the millivolt valve on your gas fireplace. Identify the TH and TH/TP terminals.
3. Connect the two wires from the receiver to the TH and TH/TP terminals of the millivolt valve. The connection is non-polarized, so the order of the wires does not matter.
4. Mount the receiver box in a suitable location, either inside the fireplace control area or on a wall using the provided wall plate and screws. Ensure it is away from direct heat.
5. Restore the gas supply to the fireplace.

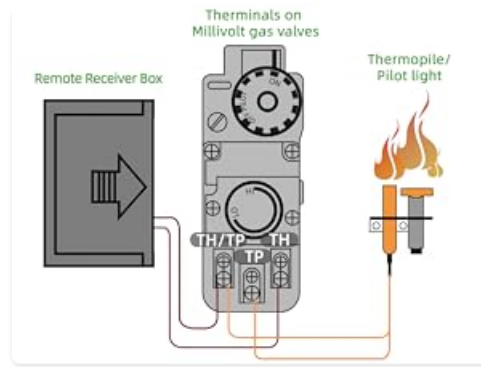


Figure 5.3: Millivolt Gas Valve Terminals.

5.3 Pairing the Remote and Receiver

After installing batteries and wiring the receiver, you need to pair the remote control with the receiver.

1. On the receiver unit, slide the switch to the 'ON' or 'AUTO' position.
2. Press and hold the 'LEARN' button on the receiver until you hear a beep or see an indicator light flash (refer to receiver for specific indicator).
3. Within 10 seconds, press any button on the remote control. The receiver will beep again or the light will stop flashing, indicating successful pairing.
4. Test the connection by pressing the ON/OFF buttons on the remote. The fireplace should respond.

6. OPERATING INSTRUCTIONS

6.1 Power On/Off

- **To Turn On:** Press the 'MODE' button on the remote until 'ON' is displayed, or press the 'Up' arrow button.
- **To Turn Off:** Press the 'MODE' button on the remote until 'OFF' is displayed, or press the 'Down' arrow button.

6.2 Mode Selection

Press the 'MODE' button on the remote to cycle through the following operating modes:

- **ON Mode:** The fireplace will remain continuously on until manually turned off.
- **OFF Mode:** The fireplace will remain continuously off.
- **AUTO Mode (Thermostat):** The fireplace will turn on and off automatically to maintain the desired set temperature. The remote's built-in sensor measures the room temperature.

6.3 Thermostat Function (AUTO Mode)



Figure 6.1: The remote control houses the temperature sensor.

- In AUTO mode, use the 'Up' and 'Down' arrow buttons to set your desired temperature. The remote will display both the current room temperature and the set temperature.
- To switch between Fahrenheit (°F) and Celsius (°C), refer to the remote control's specific instructions (usually a combination button press or a switch in the battery compartment).
- The fireplace will activate when the room temperature drops below the set temperature and deactivate when it reaches or exceeds the set temperature.

6.4 Timer Function

- Press the 'TIMER' button to activate the timer.
- Use the 'Up' and 'Down' arrow buttons to set the desired duration for the fireplace to operate (e.g., 30 minutes, 1 hour).
- The fireplace will automatically turn off once the set time has elapsed.

6.5 Child Safety Lock

The child safety lock prevents accidental activation of the fireplace.



Figure 6.2: Activating the Child Safety Lock.

- **To Lock:** Press and hold the 'Up' arrow button and the 'TIMER' button simultaneously for a few seconds until a lock icon appears on the LCD screen.

- **To Unlock:** Press and hold the 'Up' arrow button and the 'TIMER' button simultaneously again until the lock icon disappears.

7. MAINTENANCE

7.1 Battery Replacement

When the battery low indicator appears on the remote control's LCD screen, replace the batteries within two weeks to ensure continuous operation.

- **Remote Control:** Replace with 2 new AAA batteries.
- **Receiver:** Replace with 4 new AA batteries.
- Always use fresh, high-quality alkaline batteries.

8. TROUBLESHOOTING

Problem	Possible Cause	Solution
Fireplace does not respond to remote control.	Low batteries in remote or receiver. Remote and receiver not paired. Receiver switch in 'OFF' position. Remote out of range.	Replace batteries in both units. Re-pair the remote and receiver (Section 5.3). Slide receiver switch to 'ON' or 'AUTO'. Move closer to the receiver (within 65 feet).
Fireplace turns on/off unexpectedly in AUTO mode.	Temperature sensor (in remote) affected by drafts or heat sources. Large temperature hysteresis (5°F/3°C).	Relocate the remote control to an area with stable ambient temperature, away from direct heat or cold drafts. Note that the system has a built-in 5°F (3°C) temperature differential before activating/deactivating. This is normal operation.
LCD display is dim or blank.	Low batteries in remote.	Replace remote control batteries.
Child safety lock cannot be disengaged.	Incorrect button combination or duration.	Ensure you are pressing and holding the 'Up' arrow and 'TIMER' buttons simultaneously for several seconds.
Receiver not powering on.	Low or incorrectly installed batteries.	Check battery polarity and replace with fresh AA batteries.

9. SPECIFICATIONS

Remote Control Kit Size



Figure 9.1: Product Dimensions.



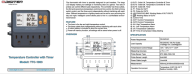



Feature	Detail
Model Number	WTC401
Product Dimensions	1.73 x 0.98 x 4.37 inches (Remote)
Item Weight	8.6 ounces (Total Kit)
Power Supply (Remote)	2 x AAA batteries (not included)
Power Supply (Receiver)	4 x AA batteries (not included)
Compatibility	Millivolt valve gas fireplaces
Max Voltage/Current	24 Volts AC/DC, 1 Amp
Wireless Range	Up to 65 feet (20 meters)
Special Features	Backlit LCD, Digital Display, Thermostat, Timer, Child Safety Lock

10. WARRANTY AND SUPPORT

DIGITEN provides a one-year warranty for any product quality problems. If you encounter any issues or require assistance, please contact DIGITEN customer support through the retailer where the product was purchased or visit the official DIGITEN website for support contact information.

We are committed to providing reliable products and personalized service to ensure your satisfaction.

Related Documents - WTC401

	<p>DIGITEN WTC100/WTC200 Wireless Thermostat User Manual</p> <p>User manual for the DIGITEN WTC100 and WTC200 wireless thermostats, providing setup, operation, specifications, and troubleshooting information for temperature control in cooling and heating applications.</p>
	<p>Digiten DTC-101 / DTC-151 Digital Temperature Controller User Manual and Specifications</p> <p>Comprehensive guide to the Digiten DTC-101 and DTC-151 digital temperature controllers, detailing features, setup, operation, technical specifications, and troubleshooting for precise temperature management.</p>
	<p>Digiten TTC-1003 Temperature Controller with Timer User Manual</p> <p>User manual for the Digiten TTC-1003 Temperature Controller with Timer, a 3-outlet thermostat designed for pet breeders and environmental control. Learn about its features, specifications, and how to set up heating, cooling, and timing functions for optimal pet comfort.</p>
	<p>DIGITEN Wireless Thermostat WTC100 WTC200 User Manual</p> <p>Comprehensive user manual for the DIGITEN Wireless Thermostat models WTC100 and WTC200, covering features, specifications, setup, operation, troubleshooting, and warranty.</p>
	<p>DIGITEN DHTC-1011 Temperature and Humidity Controller User Manual</p> <p>User manual for the DIGITEN DHTC-1011 Temperature and Humidity Controller, detailing its features, specifications, setting instructions, and troubleshooting.</p>
	<p>DIGITEN WTC1001 Wireless Thermostat User Manual and Specifications</p> <p>Comprehensive guide to the DIGITEN WTC1001 Wireless Thermostat, covering features, specifications, operation, installation, warranty, and FCC compliance. Learn how to control your heating and cooling systems efficiently.</p>