

Manuals+

[Q & A](#) | [Deep Search](#) | [Upload](#)

manuals.plus /

› [Rulefiss](#) /

› [Rulefiss X27 Wireless Sport Earbuds User Manual](#)

Rulefiss X27

Rulefiss X27 Wireless Sport Earbuds User Manual

Model: X27

INTRODUCTION

This manual provides detailed instructions for the proper use and maintenance of your Rulefiss X27 Wireless Sport Earbuds. Please read this manual thoroughly before using the product to ensure optimal performance and longevity.

Wireless Sport Earbuds RULEFISS BX27



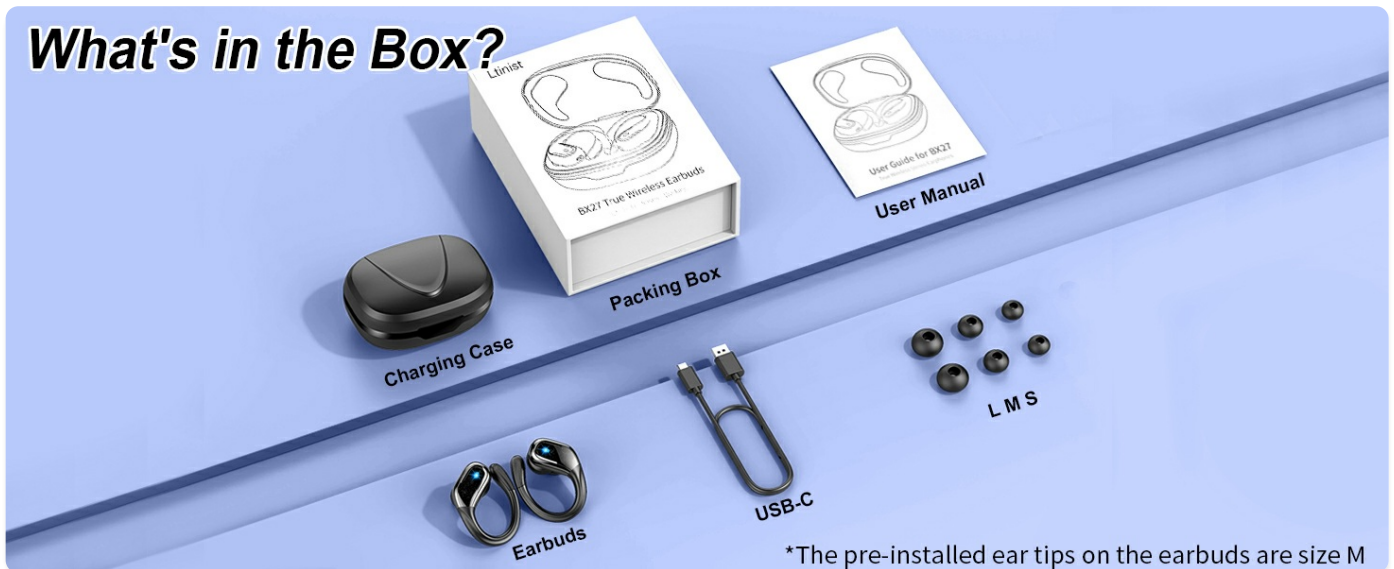
Image: Rulefiss X27 Wireless Sport Earbuds and their charging case.

WHAT'S IN THE BOX

Verify that all items are present in the package:

- Rulefiss X27 Wireless Sport Earbuds (Left and Right)
- Charging Case
- USB-C Charging Cable
- User Manual (this document)
- Ear Tips (S, M, L sizes; M size pre-installed)

What's in the Box?



*The pre-installed ear tips on the earbuds are size M

Image: All components included in the Rulefiss X27 package.

SETUP

1. Initial Charging

Before first use, fully charge the earbuds and the charging case.

1. Place both earbuds into the charging case.
2. Connect the USB-C charging cable to the charging port on the case and to a power source.
3. The LED display on the case will show the charging status. A full charge takes approximately 1 hour.

75 HOURS COMPANION

75 Hrs Charging Case



15 Hrs Earbud

Image: Earbuds in charging case displaying battery levels.

2. Pairing with a Device

The earbuds feature one-step automatic pairing.

1. Ensure Bluetooth is enabled on your device (smartphone, tablet, computer, etc.).
2. Open the charging case. The earbuds will automatically enter pairing mode.
3. On your device, search for Bluetooth devices and select "Rulefiss X27" from the list.
4. Once connected, the earbuds will automatically reconnect to the last paired device when removed from the case.

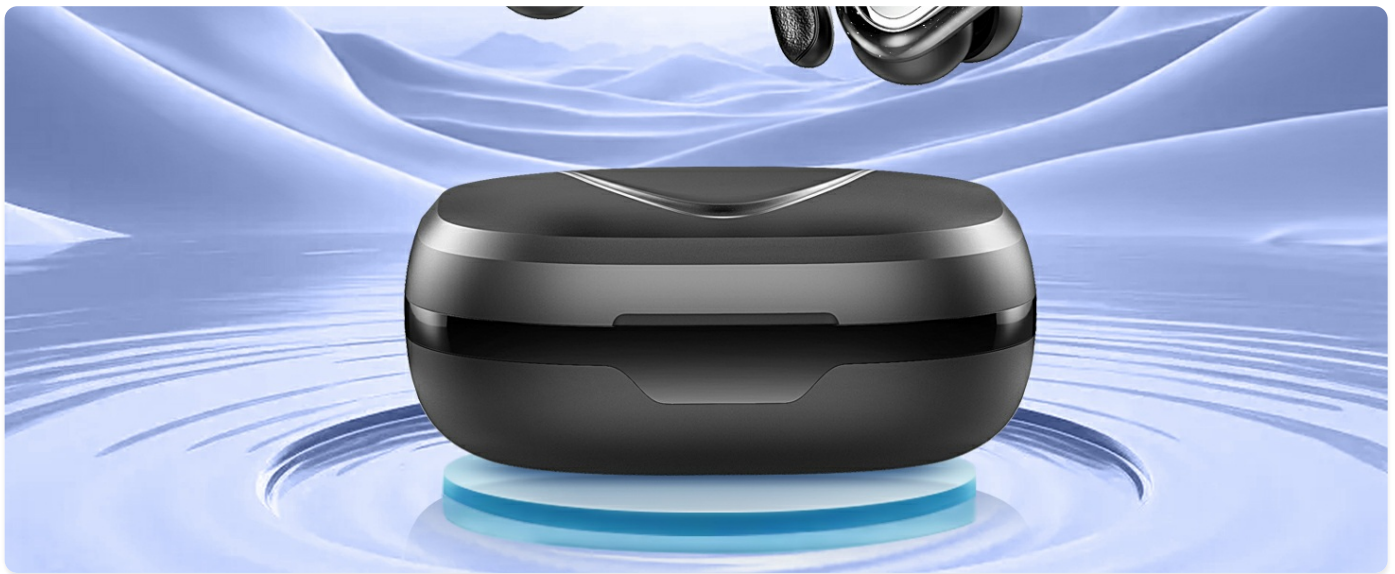


Image: Bluetooth 5.4 technology and automatic pairing process.

3. Wearing the Earbuds

Choose the ear tips that provide the best fit and comfort for optimal sound quality and secure placement, especially during physical activity.

- Gently insert the earbud into your ear canal.
- Adjust the flexible earhook over your ear to secure the earbud in place.

COMFORTABLE WEAR



Flexible



L M S



IP7
Waterproof

Image: Proper wearing of the earbuds with earhooks and ear tip options.

OPERATING INSTRUCTIONS

The Rulefiss X27 earbuds feature sensitive touch controls for managing audio and calls.

Touch Control Functions

Action	Left Earbud (L)	Right Earbud (R)
Play/Pause	Click Once	Click Once
Next Track	Click Twice	Click Twice
Previous Track	Hold for 2 seconds	Hold for 2 seconds
Volume Up	N/A	Click Once

Action	Left Earbud (L)	Right Earbud (R)
Volume Down	Click Once	N/A
Answer/End Call	Click Once	Click Once
Reject Call	Hold for 2 seconds	Hold for 2 seconds
Activate Voice Assistant (Siri)	Click Three Times	Click Three Times
Power On/Off	Hold for 5 seconds	Hold for 5 seconds

SMART TOUCH CONTROL



Hold on 2S



Click Once



Click Three Times



Click Once



Hold on 2S



Click Twice



Hold on 5s

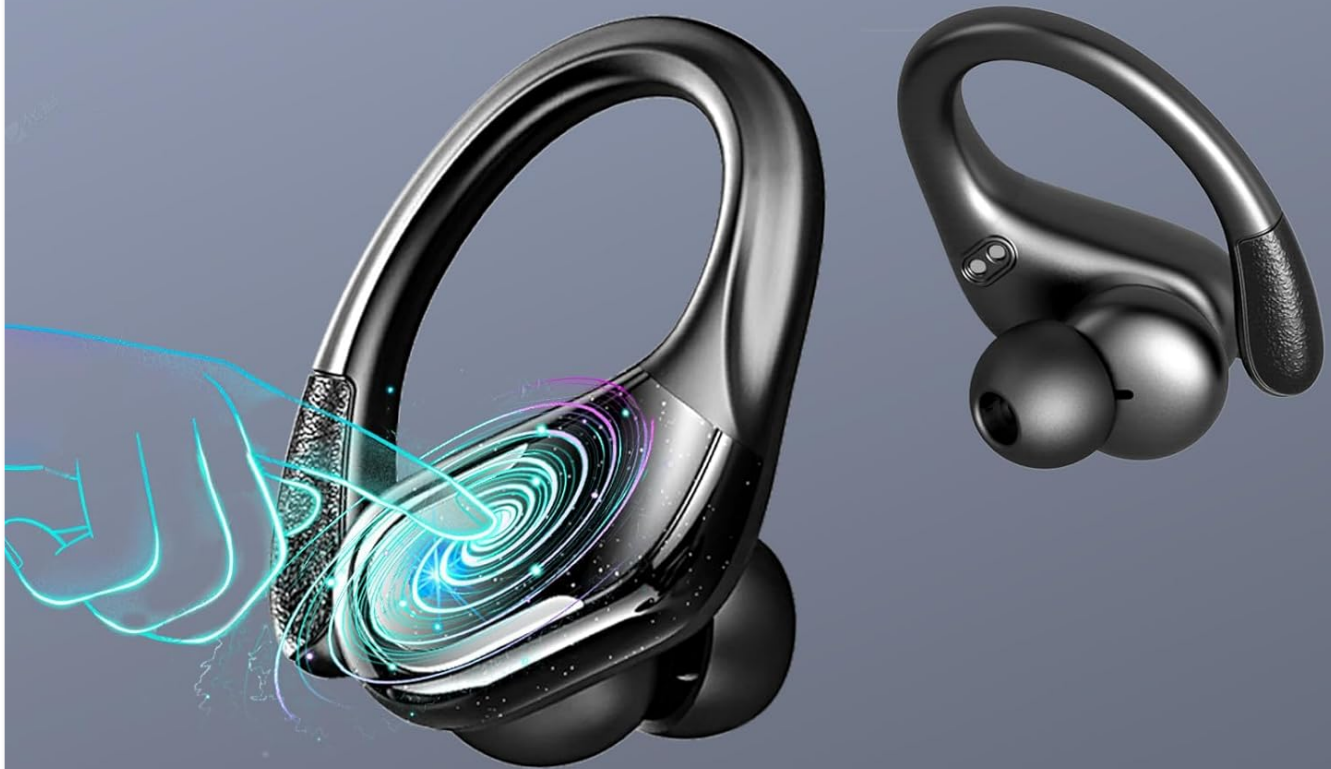


Image: Detailed touch control functions for the earbuds.

Environmental Noise Cancellation (ENC)

The earbuds are equipped with ENC technology and four microphones to reduce external noise during calls, ensuring clear communication.

ENC NOISE CANCELLING



Image: Illustration of ENC noise cancellation in action.

MAINTENANCE

Proper maintenance ensures the longevity and optimal performance of your earbuds.

- **Cleaning:** Regularly clean the earbuds, ear tips, and charging contacts with a soft, dry, lint-free cloth. Avoid using abrasive materials or harsh chemicals.
- **Storage:** When not in use, store the earbuds in their charging case to protect them from dust and damage.
- **Water Resistance:** The earbuds are IPX7 waterproof, meaning they are resistant to sweat and splashes. Do not submerge them in water or expose them to high-pressure water jets. Ensure they are dry before placing them back in the charging case.



Image: Rulefiss X27 earbuds demonstrating IPX7 water resistance.

TROUBLESHOOTING

If you encounter issues with your earbuds, refer to the following common solutions:

- **Earbuds not pairing:**

- Ensure both earbuds are fully charged.
- Place earbuds back in the case, close the lid, then open it again to re-enter pairing mode.
- Disable and re-enable Bluetooth on your device.
- Forget "Rulefiss X27" from your device's Bluetooth list and attempt to pair again.

- **No sound from one earbud:**

- Ensure both earbuds are charged.
- Try placing both earbuds back in the case and taking them out again.
- Check your device's audio balance settings.

- **Earbuds not charging:**

- Ensure the charging cable is securely connected to both the case and the power source.
- Verify that the charging contacts on the earbuds and inside the case are clean and free of debris.
- Try a different USB-C cable or power adapter.

- **Poor sound quality:**

- Ensure the ear tips provide a secure seal in your ear canal. Try different sizes.
- Clean any earwax or debris from the earbud nozzles.
- Ensure your device is within the Bluetooth range (up to 15 meters).

SPECIFICATIONS

Feature	Detail
Model Name	X27

Feature	Detail
Brand	Rulefiss
Connectivity Technology	Wireless (Bluetooth)
Bluetooth Version	5.4
Bluetooth Range	Up to 15 meters (49 feet)
Audio Driver Size	14.2 mm
Audio Driver Type	Dynamic Driver
Noise Control	Sound Isolation (ENC for calls)
Battery Life (Earbuds)	Up to 15 hours per charge
Total Playtime (with Case)	Up to 75 hours
Charging Time	Approximately 1 hour
Charging Interface	USB-C
Water Resistance Level	IPX7 (Sweat-resistant, splash-proof)
Control Method	Touch Control
Earpiece Shape	Hook (Over-ear)
Material	Silicone
Item Weight	5 ounces (total package)
Product Dimensions	1.97 x 0.98 x 1.18 inches (earbud)
Compatible Devices	Smartphones, TVs, Computers, Laptops

WARRANTY AND SUPPORT

For warranty information and customer support, please refer to the contact details provided with your purchase documentation or visit the official Rulefiss website. Standard return policy is 30 days from purchase.

Manufacturer: Rulefiss

For further assistance, please contact Rulefiss customer service.

