

[Manuals.plus](#) /

› [XIAOMI](#) /

› XIAOMI Redmi Note 15 Pro User Manual

## XIAOMI Redmi Note 15 Pro

# XIAOMI Redmi Note 15 Pro User Manual

Your comprehensive guide to getting started and maximizing your device's potential.

## PRODUCT OVERVIEW

---

The XIAOMI Redmi Note 15 Pro is a high-performance smartphone designed for durability and advanced functionality. It features a robust 6500 mAh battery, a high-resolution 200 MP camera, IP65 dust and water resistance, and a vibrant 6.77-inch AMOLED FHD+ display. This device offers an optimized user experience with integrated AI capabilities.



A front view of the XIAOMI Redmi Note 15 Pro smartphone, showcasing its sleek design and large display.

## WHAT'S IN THE BOX

Please verify that all the following items are present in your product package:

- XIAOMI Redmi Note 15 Pro Smartphone
- USB Cable (USB-C)
- SIM Eject Tool
- Silicone Protective Cover
- Ringholder

# Contenuto della confezione

Redmi Note 15 Pro



Cavo USB-C



SIM-Pin



Cover in silicone



Ringholder



An image displaying the Redmi Note 15 Pro smartphone alongside its accessories: a USB-C cable, SIM eject tool, silicone cover, and ringholder.

## SETUP GUIDE

### 1. Insert SIM Card

Locate the SIM card tray on the side of your device. Use the provided SIM eject tool to open the tray. Insert your Nano-SIM card(s) into the tray with the gold contacts facing down. Ensure the tray is fully reinserted into the device.

### 2. Initial Charge

Before first use, fully charge your Redmi Note 15 Pro. Connect the USB-C cable to the phone's charging port and the other end to a compatible power adapter (not included). The device supports 45W turbo charging for rapid power delivery.

### Maxi batteria da 6.500mAh



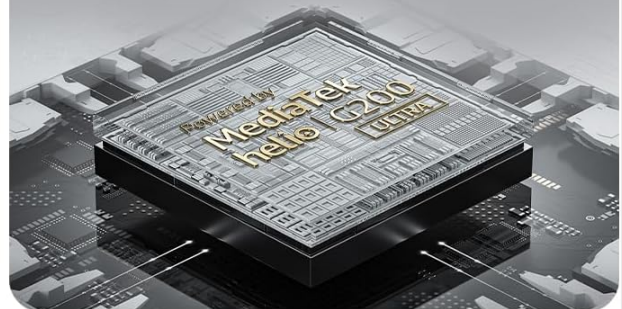
### Corning® Gorilla® Glass Victus® 2



### Resistenza alla polvere e all'acqua IP65



### MediaTek Helio G200-Ultra



### Display FHD+ AMOLED da 6,77"



### Fotocamera da 200 MP ad altissima nitidezza



An illustration showing the internal structure of the Redmi Note 15 Pro with its 6500 mAh battery being charged via a USB-C cable.

## 3. Power On/Off

To power on, press and hold the Power button until the Xiaomi logo appears. To power off, press and hold the Power button, then select 'Power off' from the options displayed on the screen.

## 4. Initial Setup Wizard

Follow the on-screen instructions to complete the initial setup process, which includes language selection, Wi-Fi connection, Google account login, and setting up security features like fingerprint or facial recognition.

## OPERATING YOUR DEVICE

### Display and Navigation

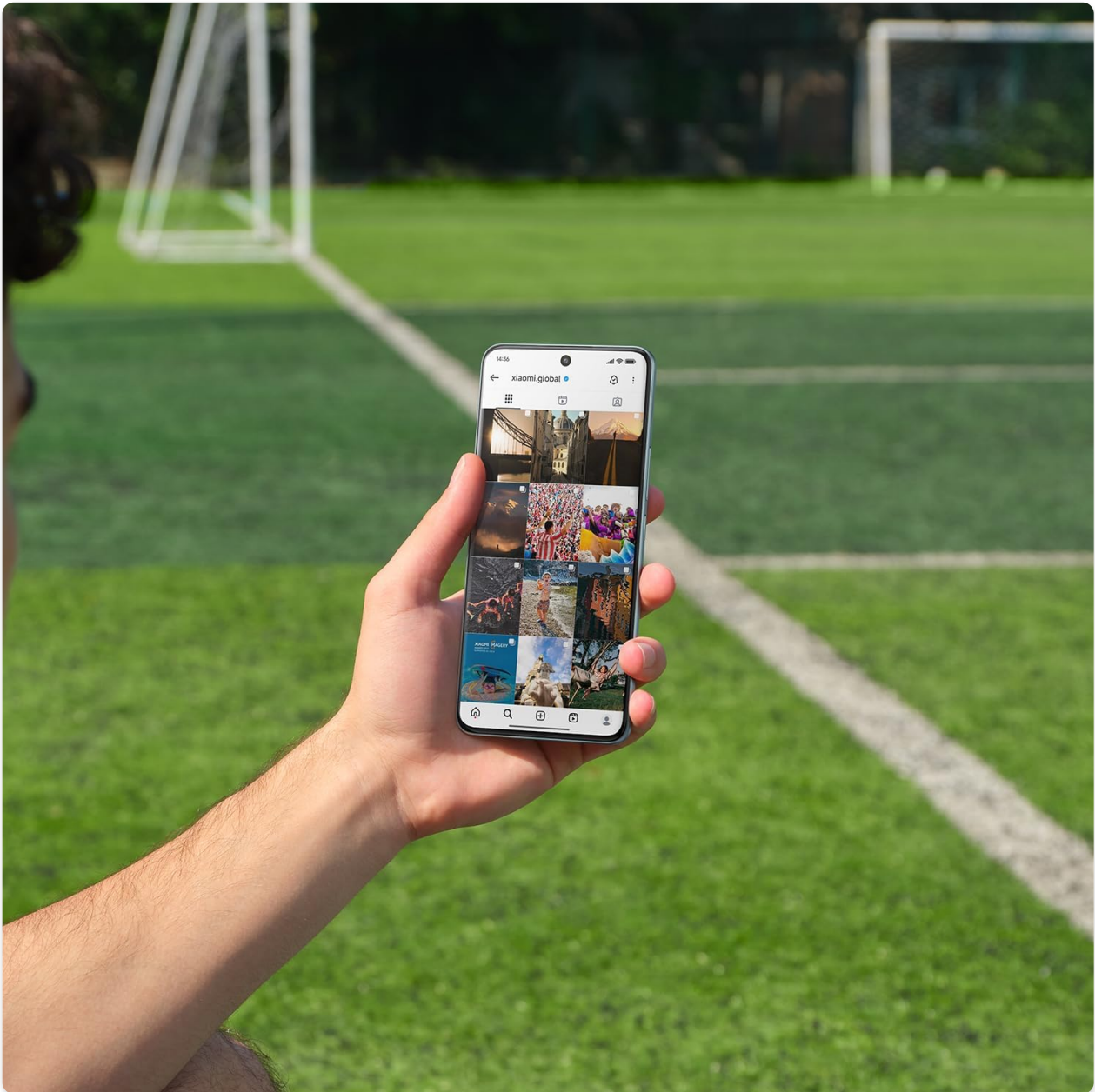
The 6.77-inch AMOLED FHD+ display offers vivid colors and a maximum brightness of 3200 nits, ensuring clear visibility even in bright environments. Navigate the interface using intuitive touch gestures or the customizable on-screen navigation bar. The 120Hz refresh rate provides a smooth and responsive user experience.



A close-up view of the Redmi Note 15 Pro's vibrant 6.77-inch AMOLED FHD+ display, highlighting its edge-to-edge design.

## Camera Functions

Your device features an exceptional 200 MP main camera with a large 1/1.4-inch sensor for highly detailed photos. Open the Camera app to access various modes including Photo, Video, Portrait, and Pro mode. The integrated AI assistant can optimize image creation and enhance your photography.



A detailed shot of the rear camera module of the Redmi Note 15 Pro, featuring its 200 MP main sensor and other lenses.

## Battery Management

The 6500 mAh battery provides extended usage. To optimize battery life, manage background app usage and adjust screen brightness. The device supports 45W turbo charging for quick power-ups and up to 18W reverse charging, allowing you to power other devices like a portable power bank.

## Ricarica ultrarapida da 45 W

### Potenza su richiesta

La ricarica ultrarapida da 45 W elimina ogni preoccupazione, grazie all'equilibrio perfetto tra ricarica rapida e lunga durata della batteria.



An image showing the phone charging with '86%' displayed on screen, illustrating 45W fast charging.

## Corning® Gorilla® Glass Victus® 2



The Redmi Note 15 Pro connected via a USB-C cable to a pair of wireless earbuds, demonstrating its capability to reverse charge other devices.

### **Dust and Water Resistance (IP65)**

The Redmi Note 15 Pro is rated IP65 for dust and water resistance, offering effective protection against splashes and dust. While resistant, it is important to avoid intentional submersion or exposure to high-pressure water jets to maintain its integrity.

## Maxi batteria da 6.500mAh



The Redmi Note 15 Pro smartphone being splashed with water, illustrating its protection against dust and water ingress.

### **MAINTENANCE**

---

#### **Cleaning Your Device**

Use a soft, lint-free cloth to gently clean the screen and body of your phone. Avoid using harsh chemicals or abrasive materials. For dust and water removal from speakers, the device features 'Wet Touch 2.0' technology and a one-touch speaker cleaning function to restore sound quality.

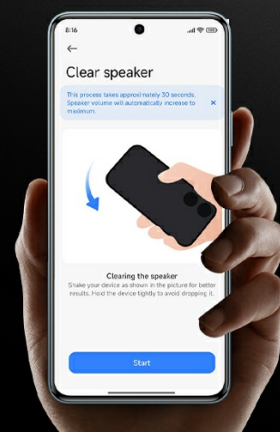
# Resistenza alla polvere e all'acqua IP65



A hand interacting with the Redmi Note 15 Pro's screen, which has water droplets on its surface, highlighting the responsive Wet Touch 2.0 technology.

## Rimozione di acqua e polvere dagli altoparlanti con un solo tocco

La vibrazione ad alta frequenza elimina l'acqua residua da altoparlanti e porte, ripristinando la qualità del suono originale.



A phone screen displaying an interface for cleaning water and dust from speakers, with an illustration of a phone being shaken to remove debris.

## Software Updates

Regularly check for and install software updates to ensure optimal performance, security, and access to new features. You can typically find update options in **Settings > About phone > MIUI version**

## Battery Care

To prolong the lifespan of your battery, avoid exposing your device to extreme temperatures. It is also recommended to avoid frequently letting the battery completely drain. Optimal charging practices suggest keeping the battery level between 20% and 80%.

## TROUBLESHOOTING

### Device Not Responding

If your device freezes, becomes unresponsive, or experiences unexpected behavior, you can force a restart. Press and hold the Power button for approximately 10 seconds until the device powers off and then restarts.

### Network Connectivity Issues

If you encounter problems with mobile data or Wi-Fi connectivity, try toggling Airplane Mode on and off from the quick settings panel. You can also reset network settings in the **Settings** menu under **Connection & sharing > Reset Wi-Fi, mobile networks, and Bluetooth**.

### Poor Call Quality or No Signal

Ensure you are in an area with adequate network signal strength. If issues persist, try cleaning the earpiece and microphone openings. In areas with no network coverage, the device's offline communication feature may allow basic communication.



A hand holding the Redmi Note 15 Pro displaying a call screen, with a mountainous landscape in the background, illustrating offline communication capabilities in areas without traditional network coverage.

## SPECIFICATIONS

Feature	Detail
Brand	XIAOMI
Model Name	Redmi Note 15 Pro
Operating System	Hyper OS

Feature	Detail
RAM	8 GB
Storage Capacity	256 GB
CPU Model	Mediatek Dimensity 8000
CPU Speed	2.2 GHz
Screen Size	6.77 Inches
Display Resolution	1080 x 2400
Refresh Rate	120 Hz
Battery Capacity	6500 mAh
Rear Camera Resolution	200 MP
Front Camera Resolution	32 MP
Water Resistance Level	IP65 (Water Resistant)
Connectivity Technology	4G, Bluetooth, NFC, Wi-Fi
SIM Card Slots	Dual SIM
Biometric Identification	Fingerprint Recognition, Facial Recognition
Color	Titanium
Year of Model	2026

# Scheda informativa del prodotto

REGOLAMENTO DELEGATO (UE) 2023/1669 DELLA COMMISSIONE per quanto riguarda l'etichettatura energetica degli smartphone e dei tablet

<b>1. Marchio</b> REDMI		<b>2. Identificativo del modello</b> 25100RA69G	
<b>3. Parametri generali del prodotto:</b>			
Parametro		Valore	
4. Tipo di dispositivo		Smartphone	
5. Sistema operativo		Android	
6. Classe di efficienza energetica		B	
7. Batteria sostituibile da parte dell'utente		Sì	
8. Durata della batteria per ciclo ( $END_{device}[h]$ )		62	
9. Durata della batteria in cicli – impostazioni predefinite [cicli]		1 000	
10. Capacità nominale della batteria ( $C_{rated}[mAh]$ )		6 350	
11. Commercializzato con custodia protettiva		Sì	
12. Prova di affidabilità in caso di caduta libera ripetuta – cadute senza riportare difetti [n]		270	
13. Prova di affidabilità in caso di caduta libera ripetuta – cadute senza riportare difetti, prova effettuata in stato completamente esteso [n]		n.a.	
14. Classe di affidabilità in caso di caduta libera ripetuta		A	
15. Grado di protezione da agenti esterni		IP65	
16. Profondità di immersione in acqua specificata, in caso di IPx8 [m]		n.a.	
17. Resistenza ai graffi dello schermo sulla scala di Mohs		5	
18. Carica-batterie	Potenza di uscita richiesta [W]	15	
	Tipo di presa (all'estremità del dispositivo)	USB-C	
<b>Informazioni sulla riparabilità:</b>			
19. Disponibilità minima garantita di aggiornamenti di sicurezza, aggiornamenti correttivi e aggiornamenti delle funzionalità del sistema operativo (anni)		5	
20. Classe di riparabilità (in base all'indice riportato di seguito)		C	
21. Indice di riparabilità		2,63	
21a. Punteggio relativo alla profondità di smontaggio ( $S_{DD}$ ) punteggio		3,10	
21b. Punteggio relativo al tipo di elementi di fissaggio ( $S_F$ )		3,00	
21c. Punteggio relativo al tipo di attrezzi ( $S_T$ )		2,40	

Pagina 1 / 2

Official product information sheet detailing technical specifications and compliance details for the Redmi Note 15 Pro.





# ENERGY

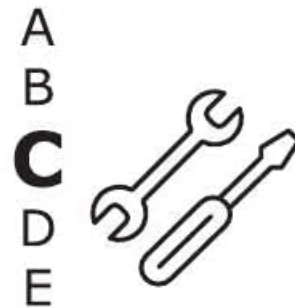
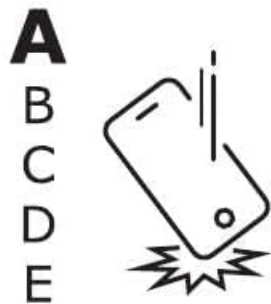


REDMI

25100RA69G



**62** h **38** min





**1000x**



**IP65**

2023/1669

The EU Energy Label for the Redmi Note 15 Pro, indicating its energy efficiency class and other environmental ratings.

## WARRANTY AND SUPPORT

Your XIAOMI Redmi Note 15 Pro comes with a **2-year manufacturer's warranty**. For warranty claims or technical support, please contact XIAOMI customer service or visit their official website. It is essential to retain your proof of purchase for warranty validation.

For further assistance, you can also refer to the official XIAOMI support pages or community forums for common questions and solutions. These resources often provide detailed FAQs, troubleshooting guides, and software updates.

**Note:** The warranty typically does not cover damages caused by misuse, unauthorized repairs, accidental damage beyond the specified IP65 resistance limits, or normal wear and tear.