



Manuals.plus /

› **HOLDLAMP** /

› HOLDLAMP Fog Smoke Machine with Lights 500W, Model ZQ10145 - User Manual

HOLDLAMP ZQ10145

HOLDLAMP Fog Smoke Machine with Lights 500W, Model ZQ10145 - User Manual

1. INTRODUCTION

This manual provides essential information for the safe and effective operation of your HOLDLAMP Fog Smoke Machine with Lights (Model ZQ10145). Please read these instructions thoroughly before initial use and retain for future reference.



Figure 1: HOLDLAMP Fog Smoke Machine with Lights 500W.

2. SAFETY INFORMATION

- **WARNING:** Disconnect power before changing fuse.
- No user serviceable parts inside.
- Use only with adult supervision.
- Do not operate without liquid.
- Indoor use only. Keep dry.
- Do not direct the fog machine towards people.
- **CAUTION:** To reduce the risk of fire, replace only with same size and type of fuse.

3. WHAT'S IN THE BOX

- Fog Machine *2
- Power cord *1
- Knob Screw *2
- Gasket *2

- Remote Control *1
- Handle Bracket *1
- Instruction Manual *1

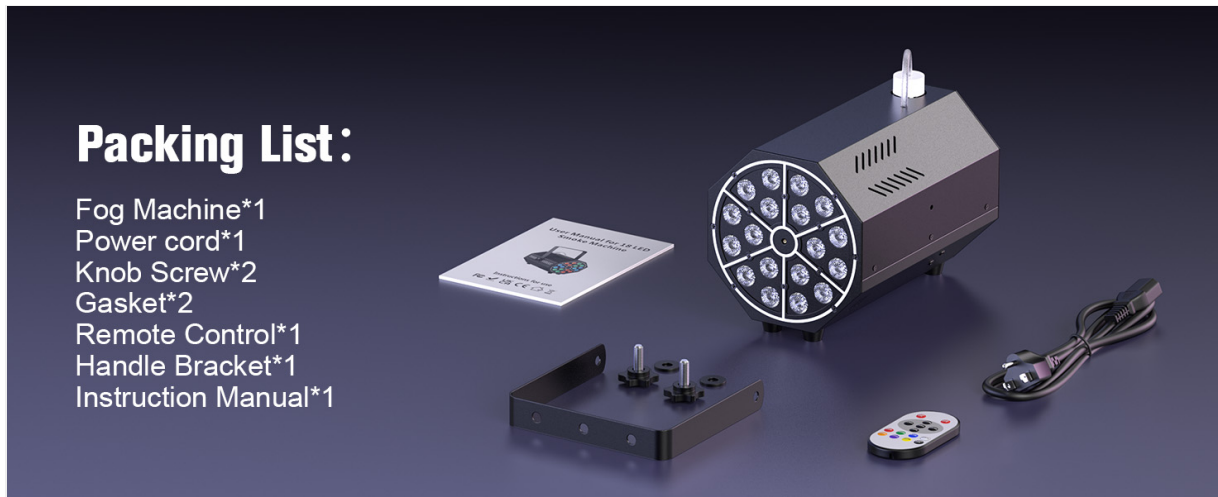


Figure 2: Packaging list for the fog smoke machine.

4. SETUP INSTRUCTIONS

1. **Fill the Tank:** Open the tank and fill with water-based fog fluid to approximately 2/3 capacity. Do not overfill.
2. **Connect Power & Preheat:** Connect the power cord to the fog machine, switch it on, and allow 3-5 minutes for initial preheating. Subsequent cycles typically require only 20-40 seconds.
3. **Control Fog Output:** After heating, the fog machine can be controlled by the remote to emit smoke, with adjustable built-in lighting effects.



Figure 3: Visual guide for filling the tank, connecting power, and operating the machine.

Mounting Options

The machine is suitable for both floor-standing and truss-mounted applications, offering flexibility for various event setups.

Freestanding or Hanging Flexibility

Switch Freely Between Floor & Truss-Mounted for Outdoor/Indoor Use



Figure 4: Examples of freestanding and truss-mounted setups.

5. OPERATING INSTRUCTIONS

The included wireless remote controller allows for easy adjustment of fog output and color settings from a distance. The machine features 18 vibrant LED lights with multiple effect modes.

Remote Control Functions:

- **FOG ON/OFF:** Start/Stop Smoke Generation
- **SHOW:** LED Auto-Chasing Mode
- **JUMP:** Jump Mode
- **FLASH:** Strobe Mode
- **PULSE:** Pulse Mode
- **FADE:** Gradient Mode
- **7 Static Colors:** Red, Green, Blue, White, Orange, Purple, Yellow
- **Light OFF:** Turns off all lights.

7 Static Color Modes & 360° Fog Diffusion

Jump / Fade / Flash / Pulse / Auto

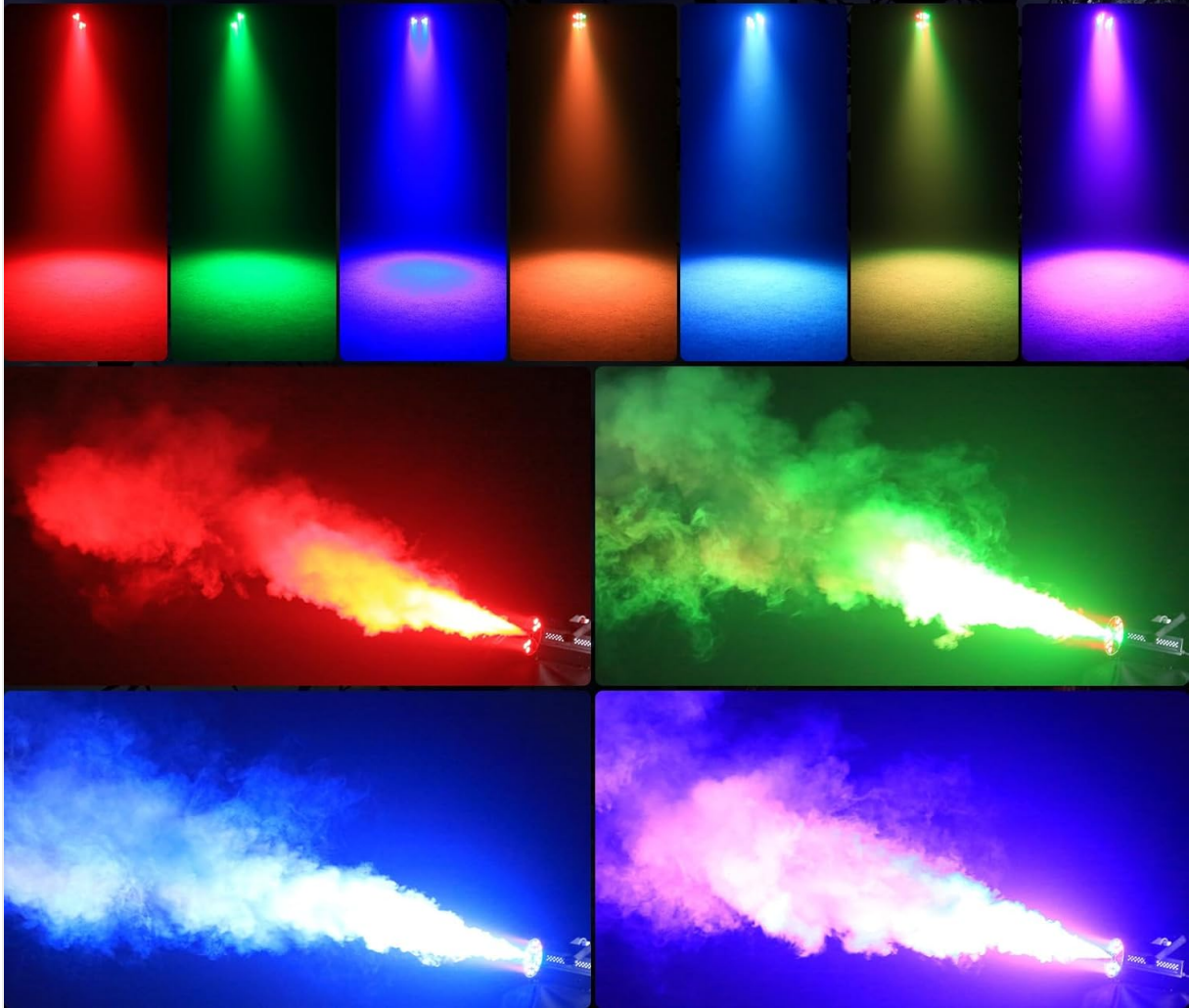


Figure 5: Remote control for adjusting fog and light settings.

Light Effects:

The 18 LED lights create stunning multi-colored effects with red, green, blue, and mixed color combinations. Choose from 7 static color modes and various dynamic patterns like Jump, Fade, Flash, Pulse, and Auto for versatile lighting displays.



15M Remote Fog Machine

15m-Range Remote Fog Machine with
7 Static Colors & 5 Dynamic LED
Modes for Halloween/Stage



Figure 6: Various static color modes and fog effects.

Video Demonstration: Fog Smoke Machine with Lights 500W

Your browser does not support the video tag.

Video 1: A demonstration of the HOLDLAMP Fog Smoke Machine with Lights 500W in operation, showcasing its fog output and various lighting effects.

Video Demonstration: Honest Review of Fog Smoke Machine with Light

Your browser does not support the video tag.

Video 2: An honest review and demonstration of the fog smoke machine, highlighting its ease of use and light features.

6. SPECIFICATIONS

Voltage	AC110V/220V 50/60Hz
Power	500W
Light Source	18-LED (6R/6G/6B)
Material	Iron
Heating Time	3-5 min (Initial); 20-40s (Cycle)
Smoke Duration	25-30s per cycle
Output	2000 CFM
Tank Capacity	300mL (Runtime: 80 min)
Projection Range	3M
Operating Temp	-20°C ~ 40°C
Product Dimensions	8.9"L x 5.8"W x 5.8"H
Item Weight	4.4 pounds

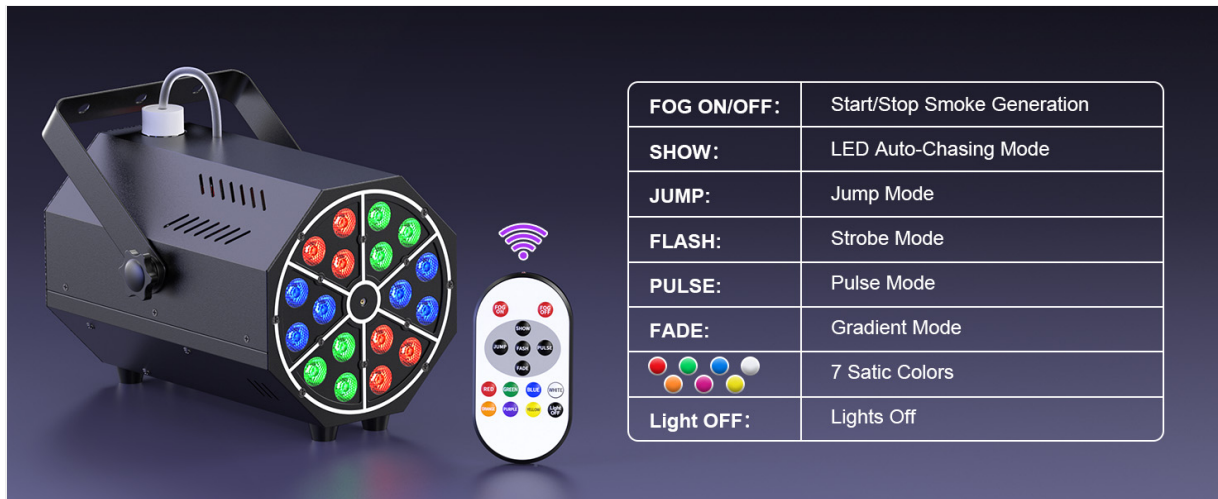


Figure 7: Comprehensive product specifications.

7. MAINTENANCE

To ensure optimal performance and longevity of your fog machine, regular maintenance is recommended:

- Always use high-quality, water-based fog fluid. Using other types of fluid can damage the machine.
- Periodically clean the exterior of the machine with a soft, dry cloth.
- Ensure the fluid tank is clean and free of debris.
- Store the machine in a dry, cool place when not in use.

8. TROUBLESHOOTING

If you encounter issues with your fog machine, consider the following:

- **No Power:** Check the power cord connection and ensure the machine is switched ON. Verify the fuse is intact and replace if necessary (refer to safety warnings for fuse replacement).

- **No Fog Output:** Ensure the fluid tank has sufficient fog liquid. Allow adequate preheating time (3-5 minutes initially, 20-40 seconds for subsequent cycles).
- **Weak Fog Output:** Check the fluid level. Ensure the nozzle is not obstructed.
- **Remote Not Responding:** Check the remote control's battery. Ensure there are no obstructions between the remote and the machine's sensor.

9. WARRANTY AND SUPPORT

For warranty information, technical support, or service inquiries, please refer to the manufacturer's official website or contact their customer service department. Keep your purchase receipt as proof of purchase.