

GROWNSY PF05

Growsy Detachable Portable Bottle Warmer PF05 Instruction Manual

Model: PF05 | Brand: GROWNSY

INTRODUCTION

Thank you for choosing the Growsy Detachable Portable Bottle Warmer PF05. This all-in-one device is designed for convenient and efficient milk warming, whether at home or on the go. It features dual heating modes for breast milk and formula, fast heating capabilities, and a long-lasting battery, ensuring your baby's food is always at the perfect temperature.

This manual provides essential information for the safe and proper use of your bottle warmer. Please read it thoroughly before first use and keep it for future reference.

PACKAGE CONTENTS

Your Growsy Portable Bottle Warmer package includes the following items:

- Bottle Warmer Base (with integrated heating element and control panel)
- Detachable Bottle Body (12 oz / 350 ml capacity)
- Nipple Cap (for direct feeding)
- Easy-Pour Cap (for transferring liquids)
- Small Nipple (0-3 months)
- Medium Nipple (3-6 months)
- USB-C Charging Cable
- Power Adapter
- User Manual

Award-Winning Quality

Recognized for reliability, safety,
and peace of mind.



All components of the Grownsy Portable Bottle Warmer laid out, including the base, bottle, lids, and nipples.

SETUP

1. **Initial Cleaning:** Before first use, disassemble all parts (bottle body, caps, nipples) and wash them thoroughly with warm soapy water. Rinse well and allow to air dry completely. Ensure the electrical contacts on the base are dry before reassembly.
2. **Assemble Bottle:** Attach the desired nipple (small for 0-3 months, medium for 3-6 months) to the nipple cap.

3. **Attach Bottle to Base:** Align the unlock icon () on the bottle body with the unlock icon () on the base. Place the bottle body onto the base and rotate clockwise until the lock icon () on the bottle body aligns with the lock icon () on the base. This secures the bottle to the heating base.
4. **Charge Battery:** Connect the USB-C charging cable to the charging port on the base and plug the adapter into a power outlet. The battery indicator lights will show charging progress. A full charge is indicated when all lights are solid.

2-IN-1 ALL-IN-ONE WARM & FEED

Warm milk and feed directly,
no transfer, no mess



ALL-IN-ONE WARM & FEED



- ✓ Warm & feed directly
- ✓ No transfer, no mess
- ✓ Perfect for on-the-go

TRADITIONAL METHOD



Warm



Pour



Feed

- ✗ Need to pour
- ✗ Easy to spill
- ✗ Not convenient for travel

The Growsy Portable Bottle Warmer is designed for direct feeding, eliminating the need for milk transfer.

Award-Winning Quality

Recognized for reliability, safety,
and peace of mind.



All components of the Grownsy Portable Bottle Warmer laid out, including the base, bottle, lids, and nipples.

OPERATING INSTRUCTIONS

1. **Fill Bottle:** Pour the desired amount of breast milk or formula into the detachable bottle body. Do not overfill.
2. **Power On:** Short press the power button () to turn on the device. The display will flash, showing the last used temperature setting.
3. **Select Heating Mode:**

- For **Milk Warming**: Short press the milk bottle button () to enter milk warming mode. Each press adjusts the temperature in a cycle: 80°F (26°C) / 90°F (32°C) / 95°F (35°C) / 98°F (37°C).
 - For **Water Warming**: Short press the water drop button () to switch to water warming mode. Each press adjusts the temperature in a cycle: 98°F (37°C) / 104°F (40°C) / 110°F (43°C) / 122°F (50°C) / 131°F (55°C).
4. **Start Warming**: After selecting the desired temperature, the device will automatically start heating if no operation is performed within 2 seconds. The LED display will show the current temperature.
 5. **Keep Warm Function**: Once heating is complete, the device will beep, and the LED will display the target temperature. The device automatically enters a 2-hour keep-warm mode, maintaining the set temperature. After 2 hours, the device automatically turns off.
 6. **Memory Function**: The device automatically saves the last function setting after it has been running for more than 5 seconds. The saved mode and temperature will be displayed the next time the device is powered on.

Under 3-Minute Perfect Heat

Nutrient-Safe Breast Milk Heating



 1min20sec	 Warming Water	Others 4min02sec
3min30sec	 Warming Breast milk	6min17sec

*The average time to heat 4 ounces of water or breast milk, based on independent laboratory results.

The Growsy Portable Bottle Warmer displaying the selected temperature during the heating process.

Your browser does not support the video tag.

Official product video demonstrating the unboxing, assembly, operation, and cleaning of the Growsy PF05 Portable Bottle Warmer.

CHARGING

The Growsy Portable Bottle Warmer is equipped with a powerful 18000mAh battery, allowing it to heat 4 oz of milk up to 8 times on a single charge. It supports Type-C fast charging for quick and convenient

recharging.

- Connect the provided USB-C cable to the charging port on the base.
- Plug the other end of the cable into the power adapter and then into a wall outlet.
- The battery indicator lights on the control panel will illuminate to show the charging status.
- A full charge typically takes approximately 3 hours.
- You can also charge the device using a power bank or in your car, ensuring you're always prepared.

On-the-Go Ready

Feed Comfortably at Home, on the Road,
or Outdoors



The Grownsy Portable Bottle Warmer connected to a USB-C charger for convenient recharging.

CLEANING AND MAINTENANCE

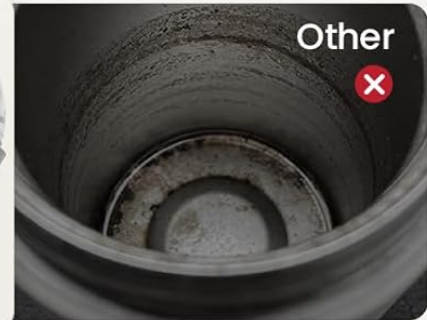
Regular cleaning is essential to maintain hygiene and prolong the life of your bottle warmer.

1. **Disassembly:** Ensure the device is powered off and cool. Rotate the bottle body counter-clockwise from the base to detach it. Separate the nipple cap/easy-pour cap from the bottle body.
2. **Washing:** Wash all detachable parts (bottle body, caps, nipples) with warm soapy water. Use a soft brush for thorough cleaning. Rinse all components thoroughly with clean water.
3. **Base Cleaning:** The heating base is not waterproof. Do not immerse the base in water or any other liquid. Wipe the exterior of the base with a damp cloth. Ensure the electrical contacts are kept dry.
4. **Drying:** Allow all parts to air dry completely before reassembling or storing.
5. **Storage:** Store the clean and dry bottle warmer in a cool, dry place away from direct sunlight.

User Friendly

- **Visualized Breastfeeding**

Clear scale &
Edible PP Material



- **Leak Prevention Device**

Flip Cap with Lock
for Safe Milk Storage



- **Wide Mouth Design**

Easy to clean with
no hard-to-reach
corners



- **Leak-Proof Spout**

Hygienic Feeding
Without Wasting
a Drop



Cleaning the detachable components of the Grownsy Portable Bottle Warmer under running water.

SPECIFICATIONS

Feature	Detail
Model	PF05

Package Dimensions	9.09 x 7.87 x 4.41 inches
Battery Capacity	18000mAh (1 12V battery included)
Material Type	316 Stainless Steel, BPA-free Plastic
Heating Modes	Breast Milk Warming (80°F / 90°F / 95°F / 98°F), Water Heating (98°F / 104°F / 110°F / 122°F / 131°F)
Fast Heating	4 oz water to 104°F in 1.5 min; breast milk to 98°F in 3 min
Keep Warm Function	Automatic 2-hour keep-warm
Charging Type	Type-C Fast Charging
Item Weight	2.4 pounds

TROUBLESHOOTING

- **Device not turning on:** Ensure the battery is sufficiently charged. Connect to power and try again.
- **Not heating:** Check that the bottle body is securely attached to the base, aligning the lock icons. Ensure there is liquid in the bottle.
- **Temperature inaccurate:** Ensure the device is used in a stable environment. Stir the liquid after heating for even temperature distribution.
- **Leakage:** Verify that all caps and nipples are securely fastened and the bottle body is correctly attached to the base. Ensure connection surfaces are dry.

WARRANTY AND SUPPORT

Growsy products come with a standard manufacturer's warranty. For specific warranty details, claims, or technical support, please refer to the warranty card included in your package or contact Growsy customer service directly.

Customer Service:

- Refer to the contact information provided in your product's user manual or packaging.
- Keep your purchase receipt as proof of purchase for warranty claims.