

LEFANT M2

LEFANT M2 Robot Vacuum and Mop User Manual

Model: M2

1. INTRODUCTION

This manual provides essential information for the safe and efficient operation of your LEFANT M2 Robot Vacuum and Mop. Please read it thoroughly before using the device and retain it for future reference.



Image: The LEFANT M2 Robot Vacuum and Mop, showcasing its sleek design and accompanying app interface.

2. SAFETY INSTRUCTIONS

Observe the following safety precautions to prevent injury or damage:

- Do not operate the robot near open flames or flammable materials.
- Keep hair, loose clothing, fingers, and all body parts away from openings and moving parts.
- Ensure the robot is used on dry surfaces only, unless specifically in mopping mode.
- Do not allow children to operate the robot. Supervise children and pets when the robot is in use.
- Use only the manufacturer-specified power adapter and charging base.
- Before cleaning or maintenance, always turn off the robot and unplug the charging base.
- Remove any loose cables, small objects, or fragile items from the cleaning path to prevent entanglement or damage.

3. PACKAGE CONTENTS

Verify that all items are present in the package:



Image: An exploded view of the LEFANT M2 robot vacuum and its accessories, including the charging base, water tank, and brushes.

1. M2 Robot Vacuum
2. Water Tank
3. Charging Base
4. Power Adapter
5. Cleaning Brush
6. Mop Holder
7. Side Brushes (x2)
8. Washable Mop Pad
9. User Manual
10. Disposable Mop Pads (x5)
11. HEPA Filter

4. PRODUCT OVERVIEW

The LEFANT M2 is a 2-in-1 robot vacuum and mop designed for efficient floor cleaning. It features advanced dToF laser navigation, PSD obstacle avoidance, and customizable cleaning options.

Tecnologia di percezione del corpo intero FreeMove3.0

Sensore di evitamento degli ostacoli a zero-touch,
per proteggere i tuoi mobili



Image: The LEFANT M2 demonstrating its 2-in-1 vacuuming and mopping capabilities with a detachable water tank and mop pad.

Key Features:

- **dToF Laser Navigation:** Precise mapping and efficient cleaning paths.
- **PSD Obstacle Avoidance:** 190° detection to prevent collisions and entanglement.
- **6000Pa Suction Power:** Effectively removes dust, debris, and pet hair.

- **2-in-1 Vacuum and Mop:** Simultaneous cleaning with an electronically controlled water tank.
- **Multi-level Mapping:** Supports mapping for up to three levels of your home.
- **Customized Cleaning:** Zone cleaning, spot cleaning, and virtual forbidden zones via app.
- **Long Battery Life:** 3200 mAh battery for up to 160 minutes of continuous cleaning.
- **Quiet Operation:** Designed for a peaceful home environment.
- **Dual-Band WiFi (2.4G/5G):** Stable and fast connection for app control.

5. SETUP

5.1 Charging Base Placement

Place the charging base against a wall in an open area, ensuring there are no obstacles within 1 meter (3 feet) to the sides and 2 meters (6 feet) in front of the base. Plug in the power adapter.

5.2 Initial Charging

Place the robot on the charging base. Ensure the charging contacts on the robot align with those on the base. The robot will automatically begin charging. Fully charge the robot before its first use.

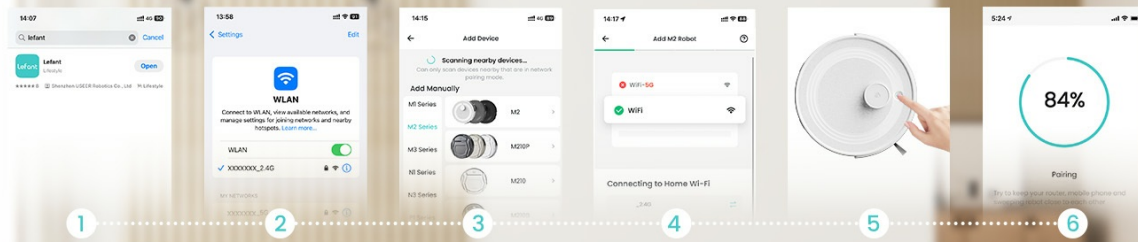
5.3 Connecting to the Lefant App



Image: A step-by-step guide on connecting the LEFANT M2 robot to the Lefant mobile application.

1. Download the Lefant App from your device's app store.
2. Connect your phone to a 2.4GHz or 5GHz Wi-Fi network.
3. Open the Lefant App and tap "Add Device."
4. Select the M2 model and enter your home Wi-Fi password. Confirm the password is correct, then tap "Next."
5. Press and hold the robot's power button for 3 seconds to turn it on. Once on, press and hold the robot's power button for 6 seconds until you hear two beeps, then release.
6. Wait for the app to scan for the device. Select the device to connect and wait for the connection to complete.

5.4 Connecting to Alexa / Google Home



Come connettersi al robot Lefant

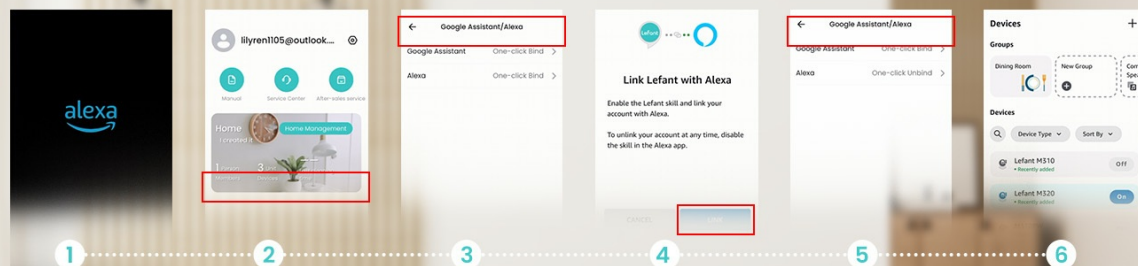
1. Scarica l'app Lefant dall'App Store.
2. Collegare il telefono alla rete Wi-Fi domestica (2,4GHz o 5GHz).
3. Una volta connesso, apri l'app Lefant e tocca "Aggiungi dispositivo".

4. Seleziona il modello M2 e inserisci la password Wi-Fi domestica. Conferma che la password è corretta, quindi tocca "Avanti".
5. Tieni premuto il pulsante del robot per 3 secondi per accenderlo. Una volta acceso, tocca "Avanti". Quindi, tieni premuto il pulsante del robot per 6 secondi finché non senti due segnali acustici, quindi rilascialo.
6. Attendi che l'app esegua la scansione del dispositivo. Seleziona il dispositivo da connettere e attendi che la connessione venga completata.

Image: A visual guide detailing the process of linking the LEFANT M2 robot vacuum with Amazon Alexa for voice control.

1. Connect your Alexa device to the internet and associate it with your Amazon account.
2. Open the Lefant App. Select "Me."
3. Find "Third-Party Voice Services" (or similar), choose "Alexa" or "Google Assistant," and tap "One-click Bind."
4. Tap "Link to Amazon account."
5. Click "Link." Then click "Back."
6. Alexa is now correctly associated. You can open "Amazon Alexa" to view associated devices under "Devices."

5.5 Controlling with Apple Watch



Come connettersi ad Alexa

1. Connetti Alexa a Internet e associala.
2. Apri l'app Lefant. Seleziona "Mio".
3. Trova "Assistente Google/Alexa". Scegli "Alexa" e fai clic su "One-click Bind".

4. Tocca "Accedi all'account Amazon".
5. Fai clic su "LINK". Fai clic su "Indietro".
6. Alexa è stata associata correttamente. Puoi aprire "Amazon Alexa" per visualizzare i dispositivi associati in "Dispositivi".

Image: Instructions for controlling the LEFANT M2 robot vacuum using an Apple Watch, showing app selection and control interface.

1. Download the Lefant App and the Lefant Watch App on your mobile phone.
2. Pair your Apple Watch with your iPhone.
3. Select the Lefant App on your Apple Watch.
4. You must click on the Lefant App on your phone and log in.
5. Once logged in, connect your robot vacuum.
6. Return to your Apple Watch, from which you can now control your robot.

6. OPERATING INSTRUCTIONS

6.1 Starting/Pausing Cleaning

Press the power button on the robot or use the Lefant App to start or pause a cleaning cycle.

6.2 Cleaning Modes

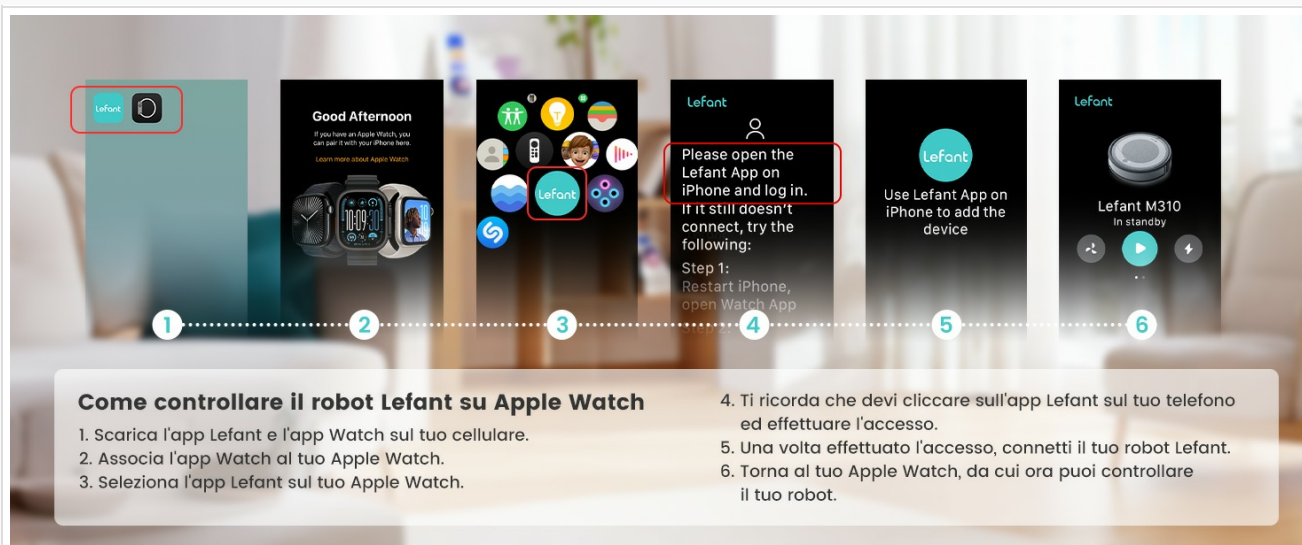


Image: An overhead view illustrating various cleaning patterns of the LEFANT M2, including casual, spot, edge, and zig-zag cleaning.

- **Auto Cleaning:** The robot intelligently plans a path for comprehensive cleaning.
- **Spot Cleaning:** Focuses on a specific area for intensive cleaning.
- **Edge Cleaning:** Cleans along walls and furniture edges.
- **Zig-zag Cleaning:** A systematic cleaning pattern for efficient coverage.

6.3 Customized Cleaning

Mappa personalizzabile 3.0

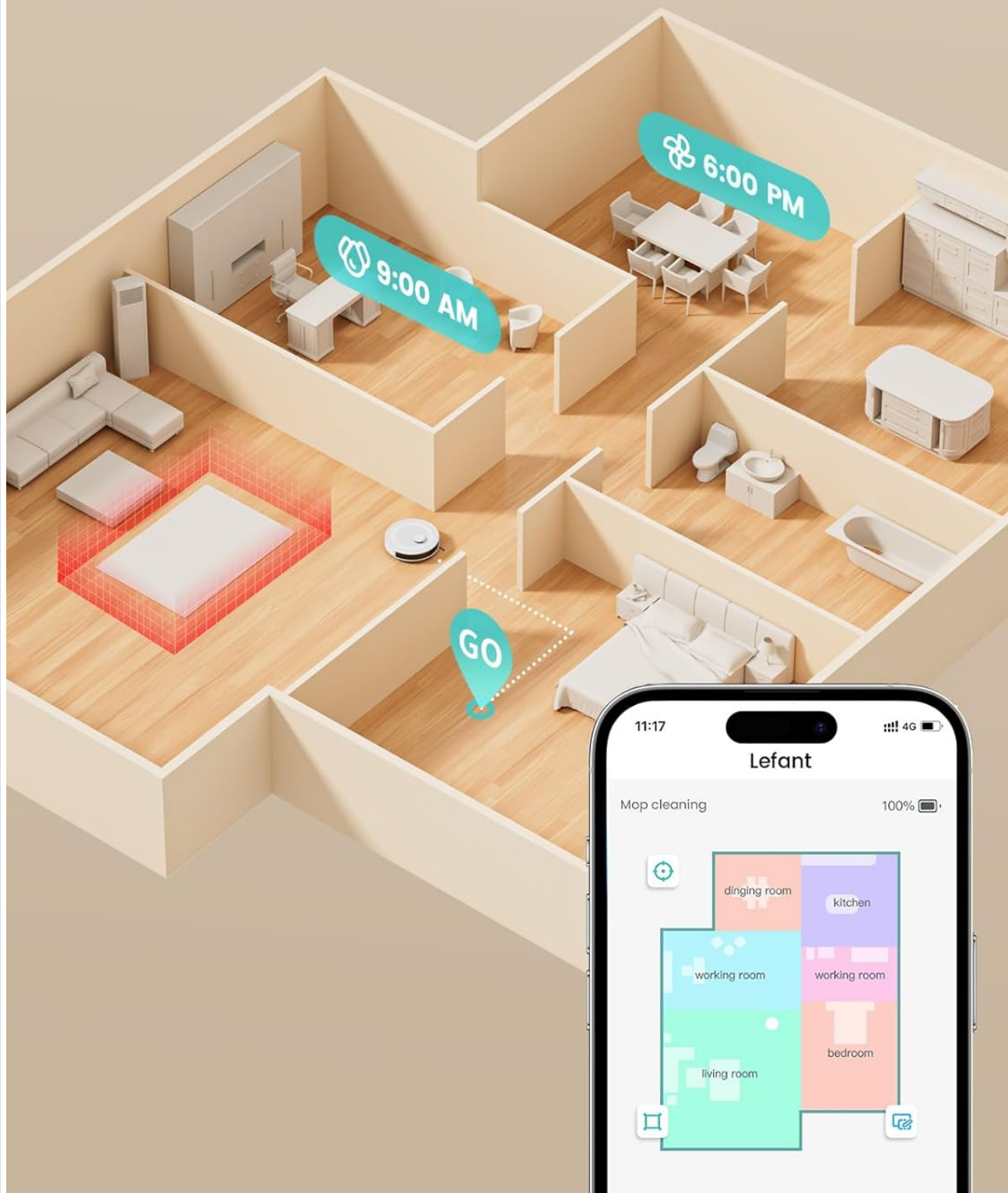


Image: A visual representation of the LEFANT M2's customizable mapping feature, allowing users to define and schedule cleaning for specific rooms.

The Lefant App allows for personalized cleaning:

- **Zone Cleaning:** Select specific rooms or areas to clean.
- **Spot Cleaning:** Designate a precise point for deep cleaning.
- **Scheduling:** Set cleaning times and frequencies for different areas.

- **Map Editing:** Divide or merge rooms to create custom cleaning schedules.

6.4 Setting Forbidden Zones



Image: The LEFANT M2 robot vacuum avoiding a virtual forbidden zone set around a pet bed and food bowls. Use the Lefant App to set virtual boundaries, preventing the robot from entering specific areas. This is useful for protecting pet areas, play zones, or fragile furniture.

6.5 Automatic Recharge and Resume

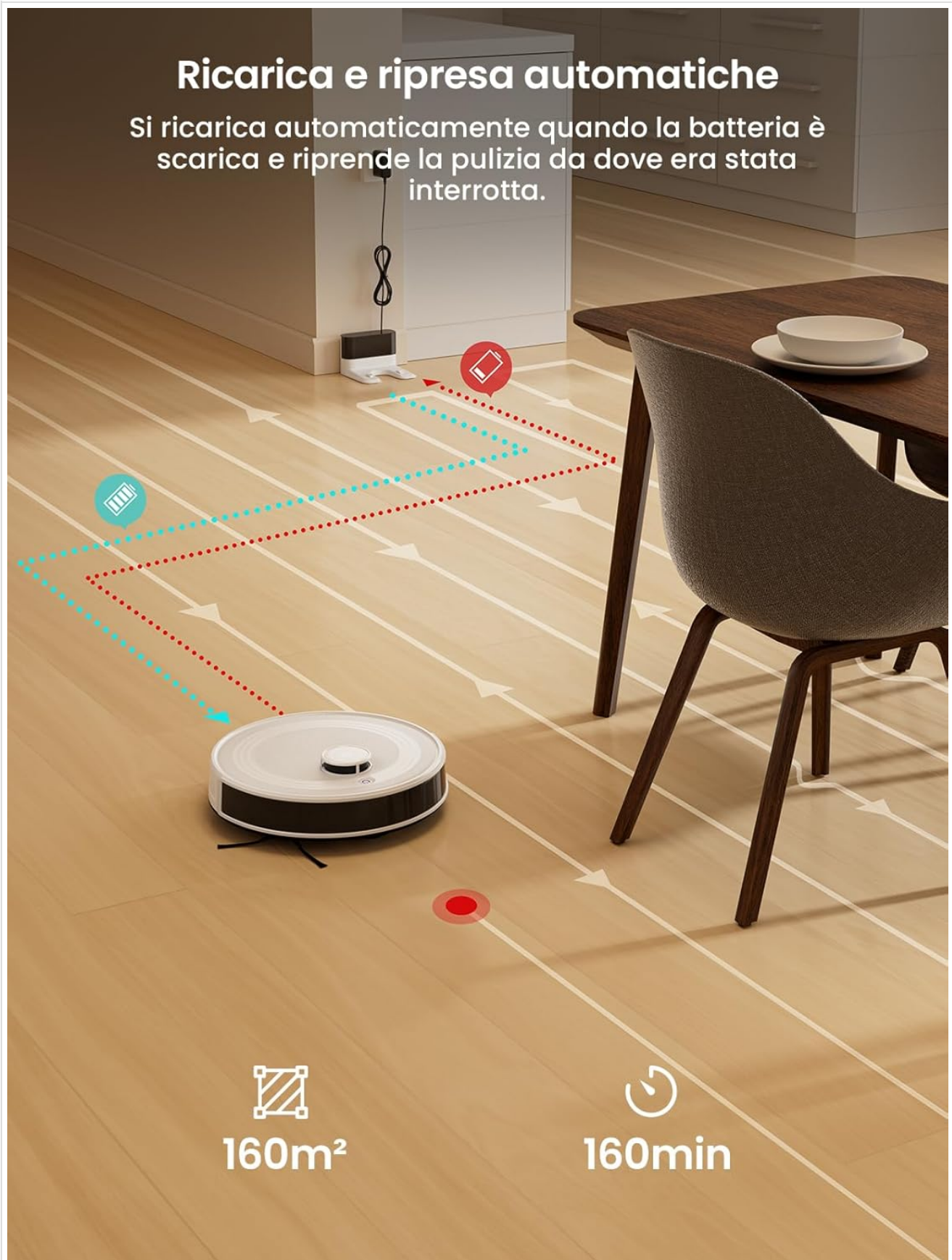


Image: The LEFANT M2 robot vacuum returning to its charging base and then resuming cleaning, illustrating its automatic recharge and resume function.

When the battery is low or a cleaning cycle is complete, the robot will automatically return to its charging base. If cleaning is not finished, it will resume from its last position after charging to 80%.

6.6 Carpet Detection



Image: The LEFANT M2 robot vacuum detecting a carpeted area and adjusting its cleaning mode, highlighting its automatic carpet detection feature.

In vacuuming and mopping mode, the robot automatically detects carpets. It will avoid carpets during mopping to prevent wetting them and increase suction power when vacuuming carpets for deeper cleaning.

7. MAINTENANCE

Regular maintenance ensures optimal performance and extends the lifespan of your robot vacuum.

7.1 Dustbin and Filter Cleaning

- Empty the dustbin after each use.
- Clean the HEPA filter and sponge filter regularly with the cleaning brush. Do not wash the HEPA filter with water.

7.2 Side Brush Cleaning

- Check side brushes for tangled hair or debris. Remove and clean them as needed.
- Replace side brushes every 3-6 months, or when visibly worn.

7.3 Water Tank and Mop Pad Cleaning

- Empty any remaining water from the tank after each mopping session.
- Wash the reusable mop pad thoroughly after each use and allow it to air dry.

7.4 Sensor Cleaning

- Wipe the cliff sensors, anti-collision sensors, and charging contacts with a clean, dry cloth periodically to ensure proper function.

8. TROUBLESHOOTING

If you encounter issues with your LEFANT M2, refer to the following common problems and solutions:

Problem	Possible Cause	Solution
Robot does not turn on	Low battery; Power button not pressed correctly	Charge the robot; Press and hold the power button for 3 seconds.

Problem	Possible Cause	Solution
Robot cannot connect to Wi-Fi	Incorrect Wi-Fi password; Router too far; Incorrect Wi-Fi band	Verify password; Move robot closer to router; Ensure 2.4GHz or 5GHz network is used.
Robot gets stuck frequently	Too many obstacles; Loose cables	Clear the cleaning area; Use virtual forbidden zones for problem areas.
Poor cleaning performance	Full dustbin; Clogged filter; Worn brushes	Empty dustbin; Clean/replace filter; Clean/replace brushes.
Robot does not return to charging base	Charging base obstructed; Robot too far from base	Ensure clear path to base; Manually place robot on base if needed.

9. SPECIFICATIONS

Feature	Specification
Brand	LEFANT
Model Name	M2
Color	White
Product Dimensions	32 x 32 x 9.4 cm
Item Weight	3.82 Kilograms
Dustbin Capacity	450 Milliliters
Voltage	19 Volts
Material	Plastic
Noise Level	60 Decibels
Battery Capacity	3200 mAh
Run Time	Up to 160 minutes
Compatible Devices	Amazon Echo, Google Home, Lefant App
Special Features	dToF Laser Mapping, 2-in-1, 6000Pa Suction, PSD Anti-Obstacle Navigation, App/Alexa Control, Ideal for Pet Hair
Recommended Surfaces	Hard Floor, Carpet, Parquet, Tiles

10. WARRANTY AND SUPPORT

LEFANT provides a standard warranty for this product. Please refer to the warranty card included in your package for specific terms and conditions. For technical support, troubleshooting assistance, or warranty claims, please contact LEFANT customer service through the official website or the contact information provided in your warranty documentation.

For further assistance, visit the [LEFANT Store on Amazon](#).