

MELLCOM 280SG

MELLCOM 4 x 6 FT Resin Outdoor Storage Shed with Floor Instruction Manual

Brand: MELLCOM | Model: 280SG

PRODUCT OVERVIEW

The MELLCOM 4 x 6 FT Resin Outdoor Storage Shed with Floor is designed to provide a durable and versatile storage solution for your outdoor needs. Featuring a robust resin construction, integrated floor, windows, and a lockable door, this shed is suitable for storing lawnmowers, bikes, pool supplies, gardening tools, and more.

IMPORTANT SAFETY INFORMATION

Please read and understand all instructions before assembly and use. Failure to follow these instructions may result in injury or property damage.

- Always follow the assembly instructions carefully.
- Wear appropriate safety gear when handling heavy components.
- Keep children and pets away from the assembly area.
- Ensure the shed is placed on a level and stable surface.
- Do not overload the shed; adhere to recommended weight limits for shelves and overall storage capacity.

PRODUCT SPECIFICATIONS

Brand	MELLCOM
Model Number	280SG
Product Dimensions (D x W x H)	68.9" x 46.3" x 76.2"
Material	Double-layer PP Recyclable Resin Panels, Alloy Steel Frame
Water Resistance Level	Water Resistant
Door Style	French Doors
Assembly Required	Yes

*Note: Dimensions are approximate and may vary slightly.*



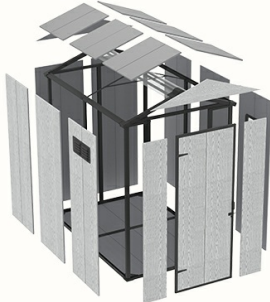
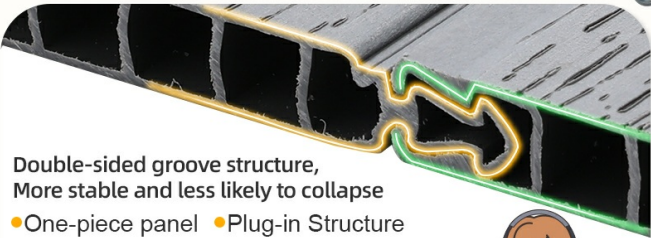
Figure 1: Detailed dimensions of the MELLCOM 4x6 FT Resin Outdoor Storage Shed.

## ASSEMBLY INSTRUCTIONS

The MELLCOM 4 x 6 FT Resin Outdoor Storage Shed features a one-piece panel plug-in structure designed for easier and faster assembly. It is recommended that two people assemble the shed to ensure stability and proper alignment of components.

- **Preparation:** Before starting, unpack all components and verify against the parts list in your physical manual. Group similar parts together.
- **Foundation:** Ensure your chosen installation site has a proper weather-resistant foundation. Recommended setups include concrete piers or a pressure-treated wood frame.
- **Panel Assembly:** The one-piece panel plug-in structure reduces installation time. Panels are designed with precision-engineered holes for easy alignment.
- **Secure Connections:** Use the provided screws and anchor kit to secure the structure, ensuring stability against environmental factors.

### ONE-PIECE ASSEMBLY

Double-sided groove structure,  
More stable and less likely to collapse

• One-piece panel • Plug-in Structure

Reduce  
**20%**  
screws

Save  
**30%**  
time






Figure 2: Illustration of the one-piece panel plug-in assembly structure.

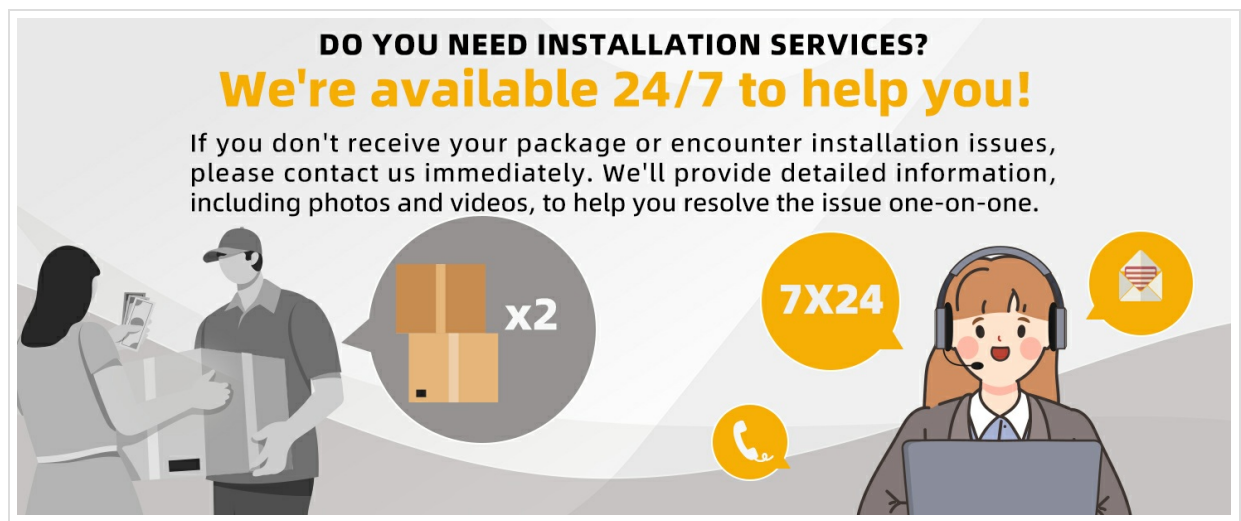


Figure 3: Details of the shed's solid structure, including snow and wind load capacity.

## KEY FEATURES AND DESIGN

### Good Appearance and Practical Structure

The tool shed features a beautiful wood grain exterior design. It includes a thickened steel frame, ventilation vents, and concealed drainage. These elements ensure a dry, organized, and protected storage space.

### Recyclable Resin Material

Constructed from 12mm thick, double-layer PP recyclable resin panels, the shed is fully waterproof, snow-resistant, and UV-protected. Unlike iron or wood, it will not rust, crack, or corrode, offering long-lasting durability with zero maintenance.



Figure 4: Close-up of the upgraded 2mm thick resin panels, highlighting stability and weather resistance.

### Thoughtful Design for Protection & Convenience

The garden shed incorporates a raised double-layer floor to keep stored items elevated, dry, and safe from ground moisture. Clear-view windows allow natural light inside and provide easy visibility of contents from the outside.

### Weather Resistance

The shed is designed to withstand various weather conditions, featuring a 30 PSF snow load capacity and up to 35 MPH wind resistance. It is waterproof and UV-resistant.

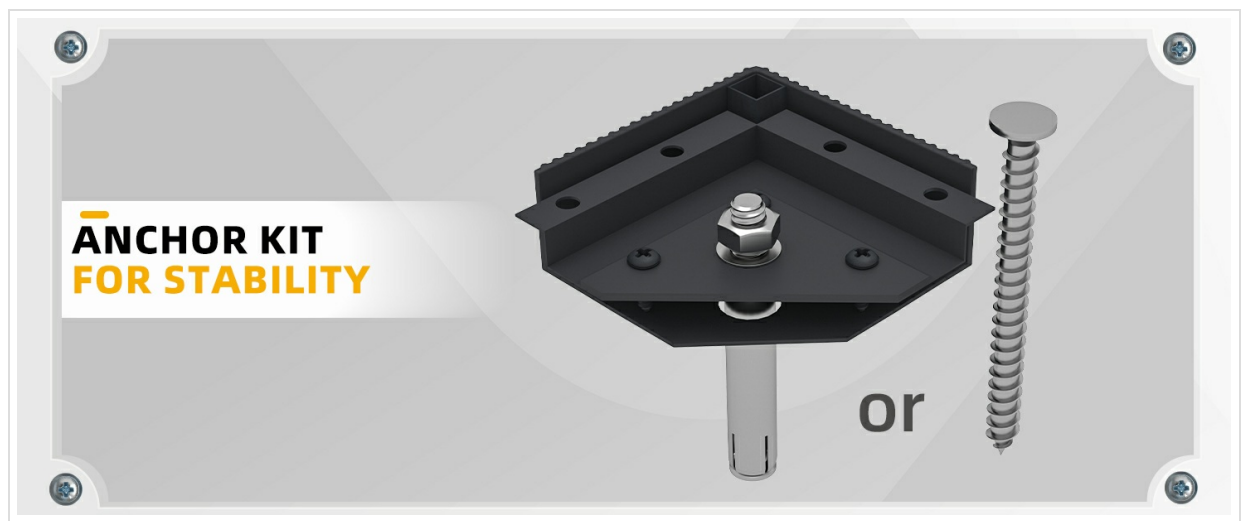


Figure 5: Illustration of the shed's weather resistance against snow and wind.

### Ventilation System

An integrated ventilation system effectively removes heat and odors, maintaining a fresh and clean interior environment.

### Lockable Door

The shed features a lockable door design for enhanced security of your stored items. A fixed door latch is included, and you can add an external padlock for additional protection.



Figure 6: Overview of the ventilation system, lockable door, and integrated floor.

### Meet Your Ultimate Storage Solution

This plastic storage shed is designed for gardeners, pet owners, and outdoor enthusiasts. It provides ample, organized space to securely store bicycles, gardening tools, pool supplies, patio furniture, and more, helping to keep your backyard tidy and clutter-free.





Figure 7: Examples of items that can be stored in the shed, demonstrating its versatile space.

## MAINTENANCE

---

To ensure the longevity and appearance of your MELLCOM storage shed, regular maintenance is recommended:

- **Cleaning:** Periodically clean the exterior with mild soap and water. Avoid abrasive cleaners or harsh chemicals that could damage the resin panels.
- **Inspection:** Annually inspect all screws, bolts, and connections to ensure they are tight and secure. Re-tighten if necessary.
- **Drainage:** Ensure the concealed drainage system remains clear of debris to prevent water accumulation.
- **Snow Removal:** In areas with heavy snowfall, gently remove accumulated snow from the roof to prevent excessive load.

## TROUBLESHOOTING

---

If you encounter any issues during assembly or use, please refer to the detailed troubleshooting section in your physical instruction manual. Common issues may include:

- Missing or damaged parts (contact customer service within 48 hours).
- Difficulty aligning panels (ensure proper foundation and follow step-by-step instructions).
- Door not closing properly (check for level foundation and correct panel alignment).

## WARRANTY AND SUPPORT

---

MELLCOM products are manufactured to high-quality standards. For warranty information, missing parts, or any installation problems, please contact MELLCOM customer service. We provide a 24-hour response service to assist you with detailed information, including photos and videos, to help resolve issues one-on-one.

## SUITABLE FOR VARIOUS USAGE SCENARIOS



Figure 8: Contact information for MELLCOM customer support for installation issues or missing parts.