

YITAHOME MAYIHbI87T

YITAHOME 46-inch Makeup Vanity with LED Lighted Mirror and 10 Drawers

USER MANUAL

Model: MAYIHbI87T

Important Safety Instructions

Please read all instructions carefully before assembly and use. Retain this manual for future reference.

- **Electrical Safety:** Ensure all electrical connections are secure and conform to local electrical codes. Do not overload the power outlets. Disconnect power before cleaning or maintenance.
- **Glass Handling:** The vanity features a tempered glass tabletop. Handle with care to prevent breakage. In case of breakage, dispose of glass fragments safely.
- **Assembly:** Assemble on a soft, clean surface to prevent scratches. Ensure all screws and fasteners are tightened securely before use. Do not overtighten.
- **Weight Capacity:** Do not place excessively heavy items on the vanity surface or inside drawers. Refer to specifications for weight limits.
- **Stability:** Place the vanity on a level surface. Consider securing the vanity to a wall using anti-tip hardware (if provided) to prevent accidental tipping, especially in households with children or pets.
- **Children:** Keep small parts and packaging materials away from children during assembly.

Package Contents

Verify that all components are present before beginning assembly. If any parts are missing or damaged, contact YITAHOME customer support.

- Vanity Desk Frame (Engineered Wood)
- LED Lighted Mirror
- PU Cushioned Stool
- 12 LED Bulbs

- Power Adapter for LED Lights
- Charging Station Module (with AC outlets, USB, Type-C ports)
- Hairdryer Holder
- Assembly Hardware Kit (screws, dowels, etc.)
- Instruction Manual

Assembly Instructions

Follow these steps carefully for proper assembly. Two people are recommended for certain steps.

1. **Unpack and Identify Parts:** Carefully remove all components from the packaging. Lay them out on a clean, soft surface to prevent scratches. Refer to the included parts list to identify each piece.
2. **Assemble the Vanity Base:** Begin by assembling the main frame of the vanity desk according to the diagrams in the separate assembly guide. Ensure all panels are correctly oriented and secured with the provided hardware.
3. **Install Drawers:** Assemble the 10 drawers and install their slides into the vanity frame. Insert the assembled drawers into their respective slots.
4. **Attach the LED Lighted Mirror:** Securely attach the LED lighted mirror to the top of the vanity desk. Ensure all mounting points are firm. Connect the LED light power adapter to the mirror and a power source.
5. **Install Charging Station and Hairdryer Holder:** Mount the charging station module and the hairdryer holder to the side of the vanity desk as indicated in the assembly guide. Connect the charging station's power cord to a wall outlet.
6. **Assemble the Stool:** Assemble the PU cushioned stool following its specific instructions.



Image: Fully assembled YITAHOME 46-inch Makeup Vanity with LED Lighted Mirror, 10 drawers, and matching stool. The vanity is black with a glass top and features a large mirror framed by LED bulbs.



AMPLE STORAGE SPACE

Designed to hold your everyday makeup essentials with ease

Image: Top-down view of the vanity with multiple drawers pulled open, showcasing the extensive storage capacity for makeup, skincare, and accessories. The glass top reveals additional compartments.

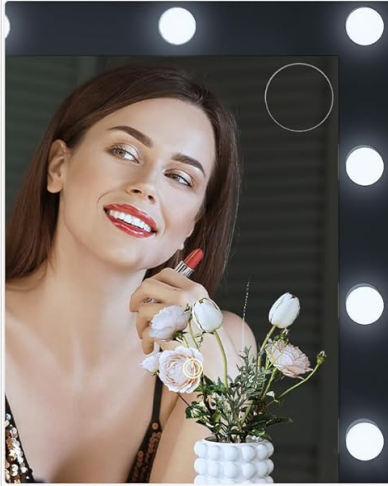
Operating Instructions

LED Lighted Mirror

The mirror features 12 LED bulbs with adjustable lighting modes to suit various needs.

- **Power On/Off:** Locate the touch sensor on the mirror surface. Tap once to turn the lights on or off.
- **Change Color Mode:** With the lights on, tap the touch sensor repeatedly to cycle through the three available color modes: Cool White (6000K), Warm White (4000K), and Warm Yellow (3000K).
- **Adjust Brightness:** To adjust brightness, press and hold the touch sensor. The brightness will gradually increase or decrease. Release when the desired brightness level is reached.

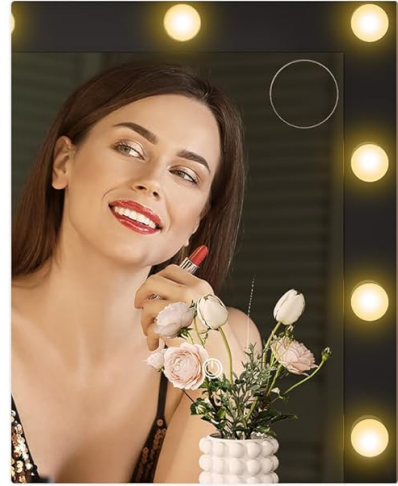
THREE LED LIGHTING COLORS



COOL WHITE



WARM WHITE



WARM YELLOW



0%

25%

50%

75%

100%

Image: A visual representation of the three LED lighting color modes: Cool White (6000K), Warm White (4000K), and Warm Yellow (3000K), demonstrating how the lighting changes appearance on a person's face.

Integrated Charging Station

The vanity includes a built-in charging station for convenience.

- **Power Connection:** Ensure the charging station's power cord is securely plugged into a functional wall outlet.
- **AC Outlets:** Use the two 120V/12A AC outlets to power beauty tools like curling irons, straighteners, or other small appliances.
- **USB Ports:** Utilize the 5V/2A USB and Type-C ports to charge smartphones, tablets, or other USB-powered devices.



120V/12A
【2 AC Outlets】



5V/2A
【2 USB Ports】



6.5 Feet
【Power Cord】

Image: A detailed view of the integrated charging station on the side of the vanity, showing two AC outlets, one USB port, and one Type-C port, along with a hairdryer holder and its power cord connection.

Hairdryer Holder

The integrated hairdryer holder provides a convenient and safe place to store your hairdryer.

- Simply place your hairdryer into the holder after use. Ensure the hairdryer is cool before storing.

Maintenance

Cleaning

- **Vanity Surface:** Wipe surfaces with a soft, damp cloth. Avoid abrasive cleaners or harsh chemicals that may damage the finish.
- **Glass Top and Mirror:** Use a glass cleaner and a lint-free cloth for streak-free cleaning. Do not spray cleaner directly onto the LED bulbs or electrical components.
- **Stool:** For the PU cushioned stool, wipe with a damp cloth and mild soap if necessary. Avoid excessive moisture.

General Care

- Periodically check all screws and fasteners to ensure they remain tight. Retighten if necessary.
- Avoid exposing the vanity to direct sunlight or extreme temperature changes, which can affect the material.
- Do not drag the vanity when moving it; lift it to prevent damage to the legs or floor.

Troubleshooting

- **LED Lights Not Working:**
 - Check if the power adapter is securely plugged into both the mirror and a working wall outlet.
 - Ensure the wall outlet has power.
 - Tap the touch sensor firmly to ensure activation.
- **Charging Station Not Providing Power:**
 - Verify the charging station's power cord is fully inserted into a live wall outlet.
 - Test the wall outlet with another device.
 - Ensure the device you are trying to charge is properly connected to the USB or AC port.
- **Drawers Are Sticking or Difficult to Open:**
 - Check for any obstructions inside the drawer or along the slides.
 - Ensure the drawer slides are properly aligned and not bent.
 - Verify that the drawer itself was assembled correctly and is not warped.
- **Vanity Feels Unstable:**
 - Confirm the vanity is placed on a flat, level surface.
 - Retighten all assembly screws and bolts.
 - Consider using wall anchor straps for added stability if not already installed.

Specifications

Feature	Detail
Brand	YITAHOME
Model Number	MAYIHbl87T
Product Dimensions	46"W x 15.7"D x 55.9"H (117cm W x 40cm D x 142cm H)
Item Weight	123.5 pounds
Frame Material	Engineered Wood
Furniture Finish	Black
Mirror Type	LED Lighted Mirror with 12 Bulbs
LED Light Modes	3 Color Modes (Cool White, Warm White, Warm Yellow)
Charging Station	2 AC Outlets (120V/12A), 1 USB Port (5V/2A), 1 Type-C Port (5V/2A)

Feature	Detail
Power Cord Length	6.5 Feet
Drawers	10
Stool Material	PU Cushioned
Assembly Required	Yes

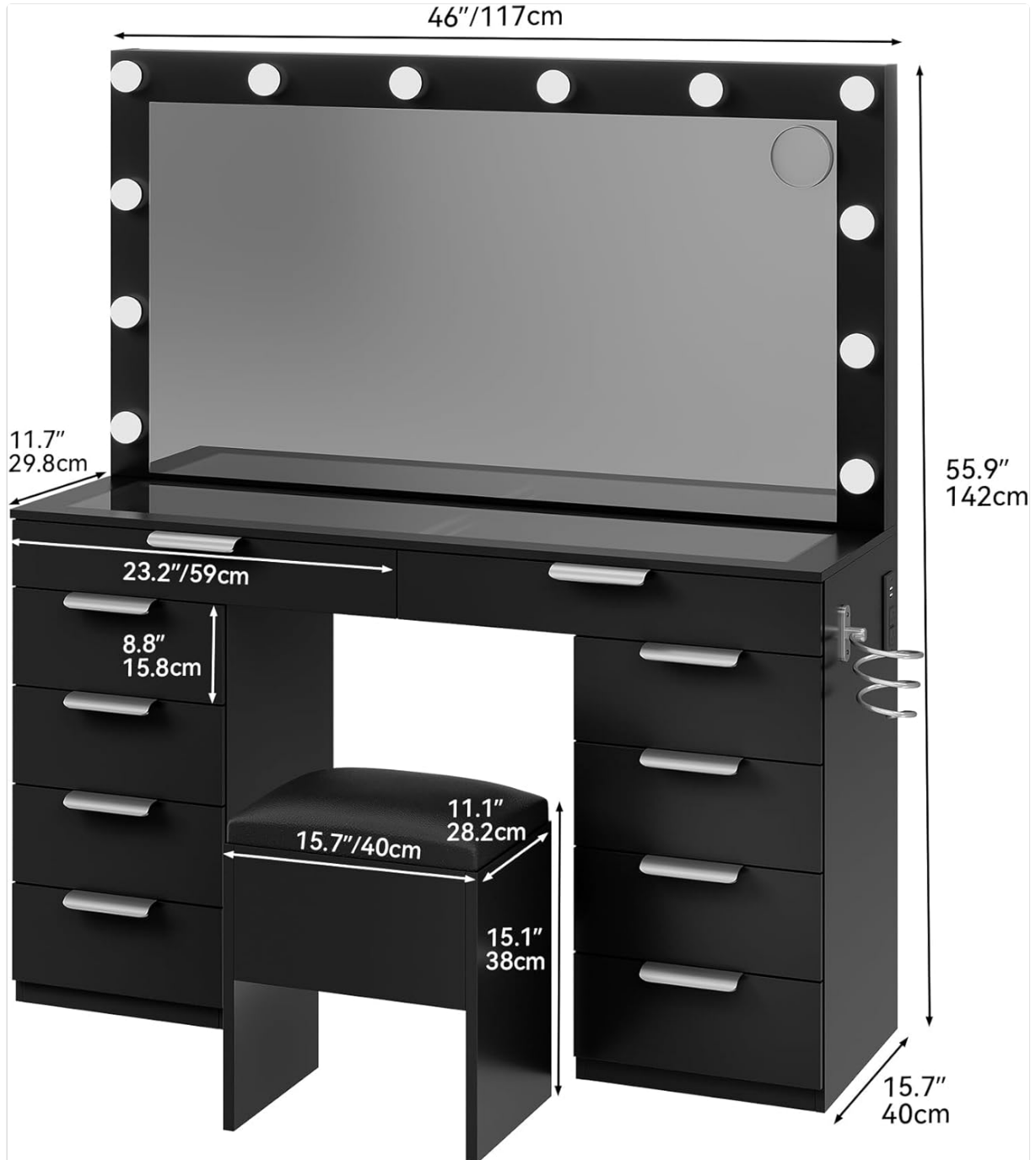


Image: Technical drawing illustrating the overall dimensions of the vanity desk and stool, including width, depth, and height measurements in both inches and centimeters.

Warranty and Support

YITAHOME products are designed for quality and durability. For any questions, concerns, or assistance

with your product, please contact YITAHOME customer support.

Please have your model number (MAYIHb187T) and purchase information ready when contacting support.

For more information, visit the official [YITAHOME Store](#).

© 2025 YITAHOME. All rights reserved.