

## WOLFSTORM 206B-01-NRG03A102-BX

# WOLFSTORM Winch Mounting Plate User Manual

Model: 206B-01-NRG03A102-BX

## INTRODUCTION

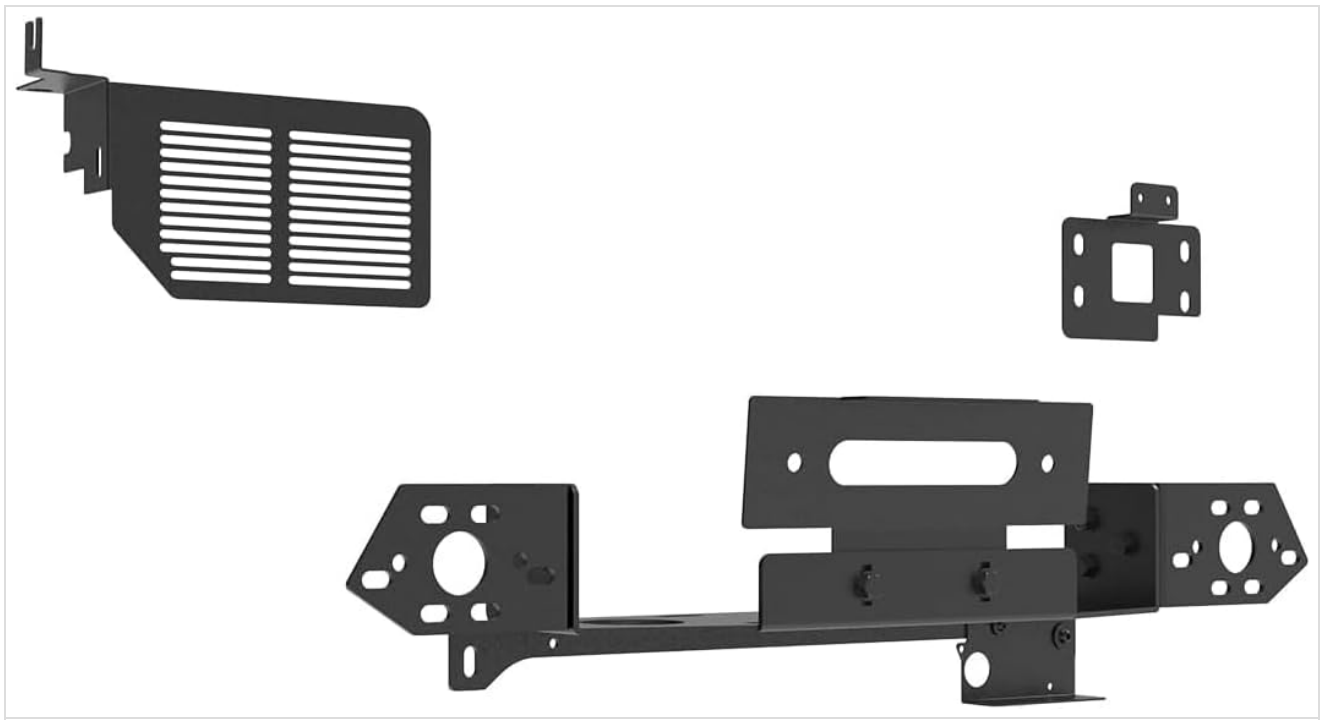
This manual provides detailed instructions for the installation, operation, and maintenance of your WOLFSTORM Winch Mounting Plate, Model 206B-01-NRG03A102-BX. This product is designed specifically for 2024-2025 Ford Ranger models, excluding Raptor and Diesel Engine variants. Please read this manual thoroughly before installation to ensure proper fitment and safe operation.

The WOLFSTORM Winch Mounting Plate is constructed from heavy-duty Q235A steel with a black powder-coated finish, offering durability and resistance against wear. It is designed to accommodate winches up to 12,000 lbs capacity.

## PACKAGE CONTENTS

Verify that all components are present before beginning installation:

- 1 x Winch Mounting Plate Assembly
- Mounting Hardware Kit (bolts, nuts, washers)
- Adaptive Cruise Control Relocation Bracket (if applicable)
- Power Supply Relocation Bracket (if applicable)



**Figure 1:** Overview of the WOLFSTORM Winch Mounting Plate components. This image displays the main winch plate, a smaller square bracket, and a rectangular vented bracket, all in black steel.

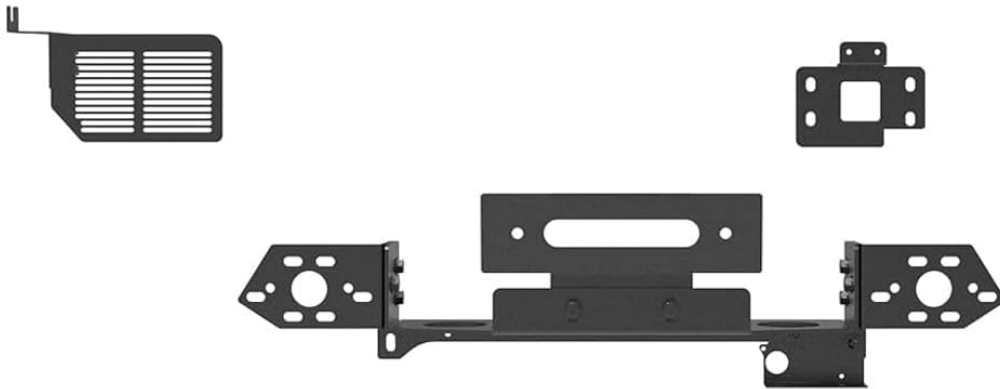
## VEHICLE COMPATIBILITY

---

- 2024 Ford Ranger
- 2025 Ford Ranger

**Note: This product is NOT compatible with Ford Ranger Raptor models or Diesel Engine variants.**

# PRODUCT FITMENT



**FOR 2024-2025 FORD RANGER**

**Figure 2:** Illustration of the winch plate fitment on the front of a 2024-2025 Ford Ranger. The image shows the vehicle's front bumper with the winch plate components overlaid, indicating compatibility.

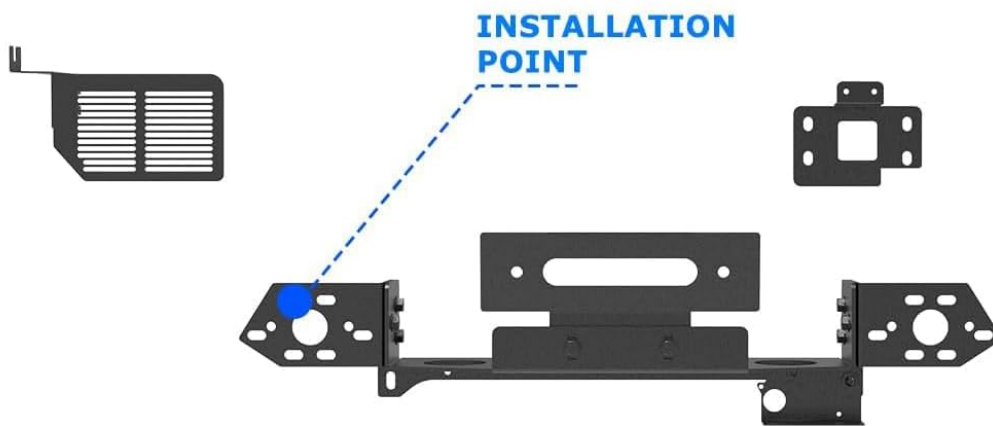
## INSTALLATION INSTRUCTIONS

**Estimated Installation Time:** 2-4 hours (professional installation recommended)

**Tools Required:** Standard automotive tools, including wrenches, sockets, and potentially a drill for specific components.

1. **Preparation:** Park the vehicle on a level surface and engage the parking brake. Disconnect the negative terminal of the vehicle's battery.
2. **Remove Front Bumper Components:** Carefully remove any necessary front bumper components to access the frame mounting points. Refer to your vehicle's service manual for specific instructions on bumper removal.
3. **Position Winch Plate:** Align the WOLFSTORM Winch Mounting Plate with the factory mounting points on the vehicle's frame.

## FRONT DETAIL



**Figure 3:** Detailed view highlighting an installation point on the winch plate. An arrow points to a specific mounting hole on the plate, indicating where it connects to the vehicle frame.

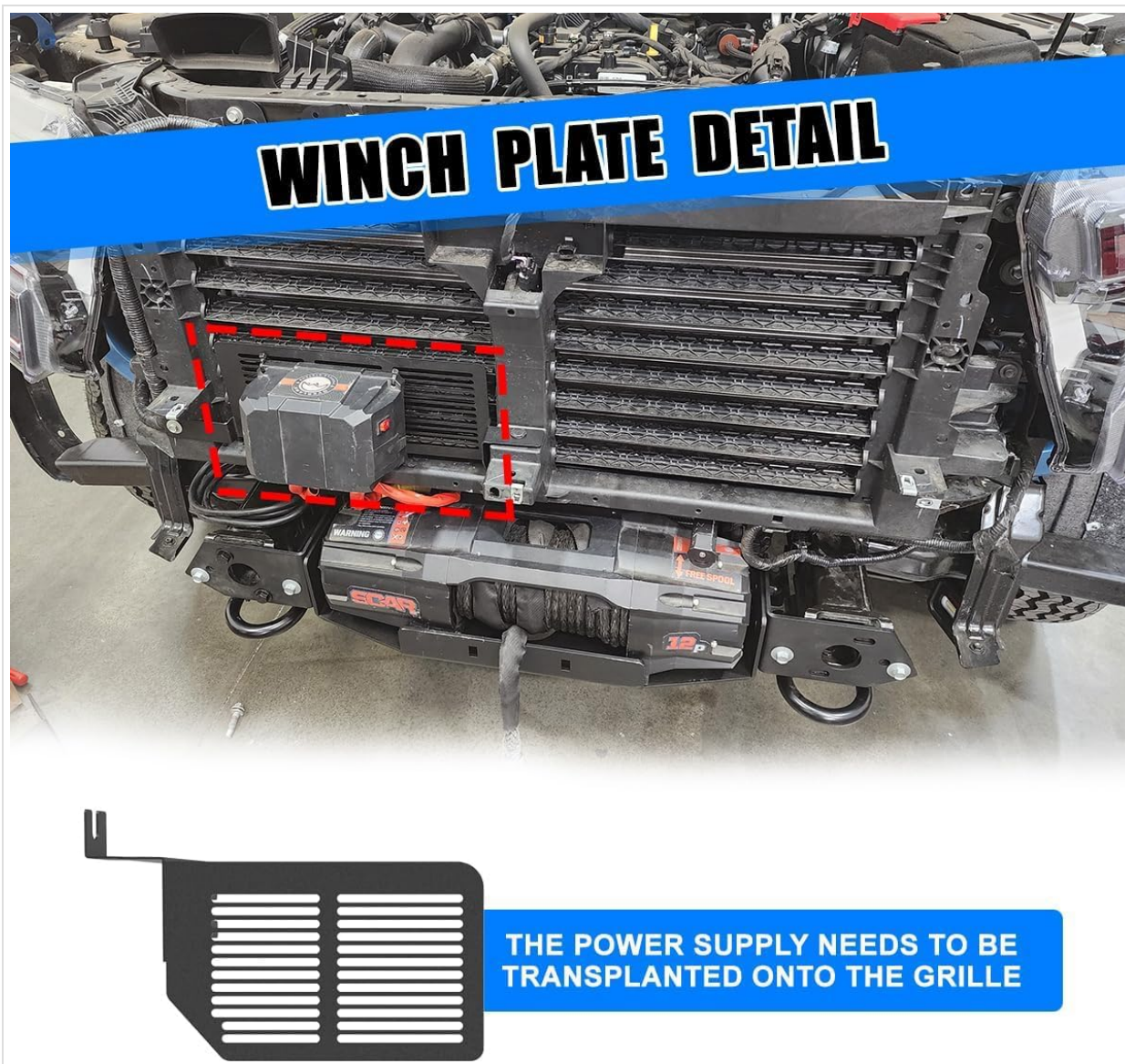
4. **Secure Winch Plate:** Use the provided hardware to securely bolt the winch plate to the frame. Ensure all bolts are tightened to the manufacturer's specifications.
5. **Install Winch (Optional):** If installing a winch, mount it onto the winch plate according to the winch manufacturer's instructions. This plate is designed for winches up to 12,000 lbs.



**Figure 4:** Exploded diagram showing the winch plate assembly and its capacity. The image illustrates how the various components fit together and states the 12,000 lbs winch capacity.

6. **Relocate Power Supply:** The vehicle's power supply may need to be relocated to the grille area to accommodate the winch and mounting plate.





**Figure 5:** Image showing the winch plate installed with a winch, indicating the need to relocate the power supply onto the grille. A red dashed box highlights the area where the power supply is typically located.

7. **Install Adaptive Cruise Control Relocation Bracket:** If your vehicle is equipped with Adaptive Cruise Control, install the provided relocation bracket. Drilling may be required for this step.



**Figure 6:** Illustration of the Adaptive Cruise Control relocation bracket and its installation position. The image shows the bracket and notes that drilling is required for its proper mounting.

8. **Reassemble Bumper:** Reinstall the front bumper components, ensuring all connections are secure and no wires are pinched.





**Figure 7:** Visual representation of the winch plate installed behind the factory bumper. The image shows the final appearance with the winch plate discreetly integrated.





**Figure 8:** Front view of a Ford Ranger with the WOLFSTORM Winch Mounting Plate and a winch installed, demonstrating the overall appearance with the factory bumper reinstalled.

- 9. Reconnect Battery:** Reconnect the negative terminal of the vehicle's battery.

## OPERATING INSTRUCTIONS

The WOLFSTORM Winch Mounting Plate itself does not require specific operating instructions. Its function is to provide a secure mounting point for a winch. Refer to your winch manufacturer's manual for proper operating procedures, safety guidelines, and maintenance specific to your winch.

Always ensure the winch is properly secured to the mounting plate before use. Regularly inspect all mounting hardware for tightness and signs of wear or damage.

## MAINTENANCE

To ensure the longevity and performance of your WOLFSTORM Winch Mounting Plate, follow these maintenance guidelines:

- **Regular Inspection:** Periodically inspect the winch plate for any signs of rust, corrosion, cracks, or damage, especially after off-road use or exposure to harsh weather conditions.
- **Hardware Check:** Regularly check all bolts and nuts securing the winch plate to the vehicle frame and the winch to the plate. Tighten any loose hardware to prevent movement or failure.

- **Cleaning:** Clean the winch plate with mild soap and water to remove dirt, mud, and road salt. Avoid abrasive cleaners or solvents that could damage the powder-coated finish.
- **Protective Coating:** If the powder coating is scratched or chipped, touch up with a rust-inhibiting paint to prevent corrosion.

## TROUBLESHOOTING

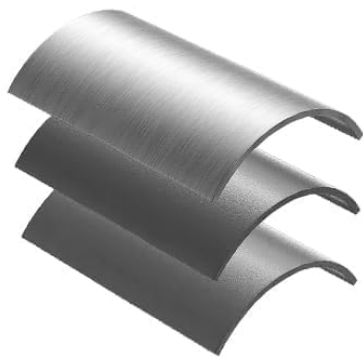
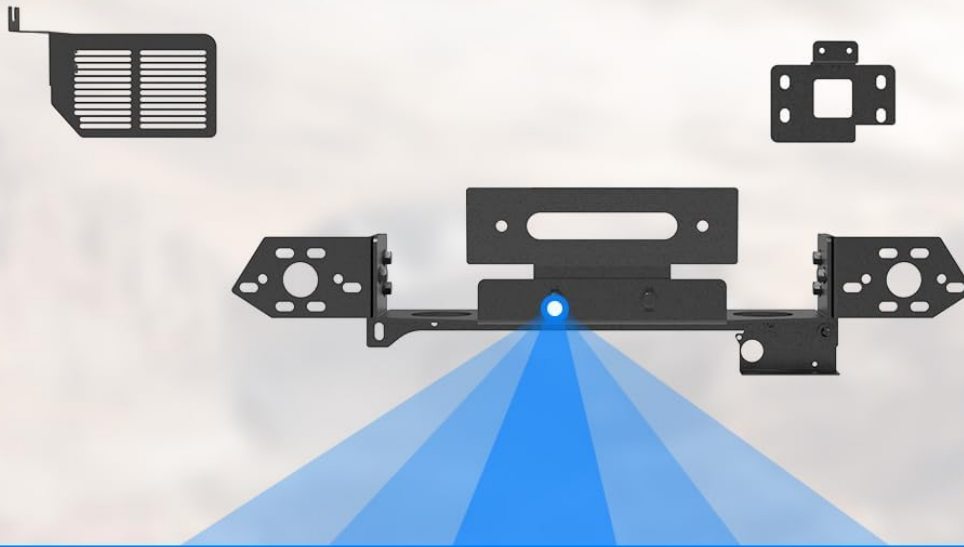
This section addresses common issues related to the winch mounting plate. For winch-specific issues, consult your winch's instruction manual.

- **Issue:** Winch plate appears loose after installation.  
**Solution:** Re-check all mounting bolts and nuts. Ensure they are properly tightened to the recommended torque specifications. Over time, vibrations can cause hardware to loosen.
- **Issue:** Difficulty fitting the winch plate to the vehicle.  
**Solution:** Verify vehicle compatibility (2024-2025 Ford Ranger, excluding Raptor/Diesel Engine). Ensure no obstructions are present and that factory mounting points are clear. Review installation steps carefully.
- **Issue:** Rust or corrosion appearing on the plate.  
**Solution:** Clean the affected area thoroughly. Sand lightly if necessary to remove rust, then apply a rust-inhibiting primer and a black automotive paint to match the powder-coated finish. Regular cleaning and inspection can prevent this.

## SPECIFICATIONS

Attribute	Detail
Model Number	206B-01-NRG03A102-BX
Material	Q235A Steel (Carbon Steel)
Finish	Black Powder Coated
Winch Capacity	Up to 12,000 lbs
Vehicle Position	Front
Dimensions (L x W x H)	7.48 x 26.77 x 8.27 inches (Product)
Item Weight	39.7 pounds
Compatibility	2024-2025 Ford Ranger (Excl. Raptor/Diesel Engine)

# PRODUCT MATERIAL



**1.Powder Coated Layer**

**2.Carbon Steel Layer**

**3.Electro-galvanized "E-Coat" Layer**

**Figure 9:** Diagram illustrating the multi-layered construction of the product material. It shows a Powder Coated Layer, a Carbon Steel Layer, and an Electro-galvanized "E-Coat" Layer, highlighting the durability features.

## WARRANTY AND SUPPORT

WOLFSTORM products are manufactured to high standards. For warranty information or technical support, please contact WOLFSTORM customer service through their official website or the retailer where the product was purchased. Please have your model number (206B-01-NRG03A102-BX) and purchase date available when contacting support.

For additional information or to explore other WOLFSTORM products, visit the [WOLFSTORM Store](#).