

[Manuals.plus](#) /

> [FREDBECK](#) /

> FREDBECK Sliding Closet Doors 72x80 (Double 37 inch) Bypass Barn Door Instruction Manual

FREDBECK MB-PVC-BP-01H-3780A-X2

FREDBECK Sliding Closet Doors 72x80 (Double 37 inch) Bypass Barn Door Instruction Manual

Model: MB-PVC-BP-01H-3780A-X2

1. PRODUCT OVERVIEW

The FREDBECK Sliding Closet Doors provide a space-saving and aesthetically pleasing solution for various room openings. This bypass barn door system features two individual door panels that slide smoothly on a track, allowing flexible access to your closet or room. Constructed from durable MDF with a PVC surface and a pine wood core, these doors are designed for longevity and ease of maintenance.



Image: FREDBECK 72x80 Sliding Closet Doors in a bedroom setting, illustrating the closed position.

Key Features:

- **Size:** 72x80 inches (Double 37 inch x 78-3/4 inch panels).
- **Material:** MDF with a waterproof and easy-to-clean PVC surface, supported by a pine wood core for stability.
- **Hardware:** Includes a 72-inch bypass pocket door hardware track kit and two pull handles.
- **Design:** H-frame style in white finish.
- **Operation:** Quiet gliding system with silent rollers for smooth and effortless sliding.
- **Durability:** Scratch-proof and resistant to warping.

2. SETUP AND INSTALLATION

Assembly of the FREDBECK Sliding Closet Doors is required. It is recommended that two people perform the installation, which typically takes 45-60 minutes. Ensure you have a level and basic tools for mounting the track and hanging the doors.

Installation steps

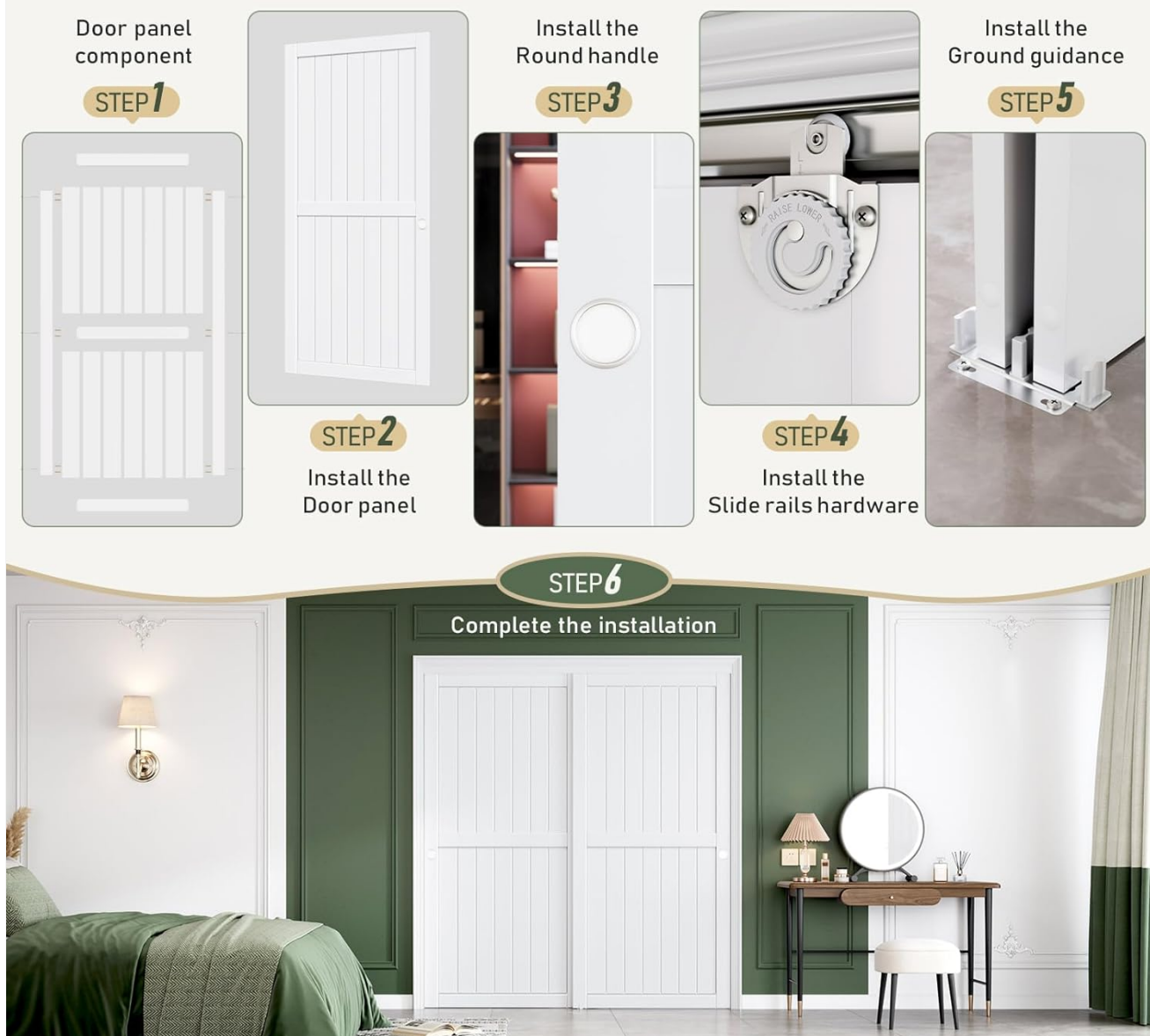


Image: Step-by-step installation guide for the sliding closet doors.

Installation Steps:

1. **Prepare Door Panels:** Assemble the door panel components if they are not pre-assembled.
2. **Install Door Panels:** Attach necessary hardware to the door panels.
3. **Install Round Handle:** Secure the round pull handles onto the door panels.
4. **Install Slide Rails Hardware:** Mount the bypass pocket door hardware track kit securely to the header above the door opening, ensuring it is level and lags into studs.
5. **Install Ground Guidance:** Install the floor guide to maintain door alignment and stability.
6. **Complete Installation:** Hang the door panels onto the rollers on the track and adjust as needed for smooth operation.

For detailed visual instructions, it is advisable to consult online video tutorials if the provided instructions are primarily pictorial.

3. OPERATING INSTRUCTIONS

The FREDBECK Bypass Barn Doors are designed for flexible and quiet operation, allowing you to easily access your closet or room. The bypass design enables the two door panels to slide past each other.

3 Space-Efficient & Quiet *Modes in 1 Bypass Door*

Fully Closed — Tidy Look

Half Open — Partial Use

Fully Open — Max Access



Track is Smooth

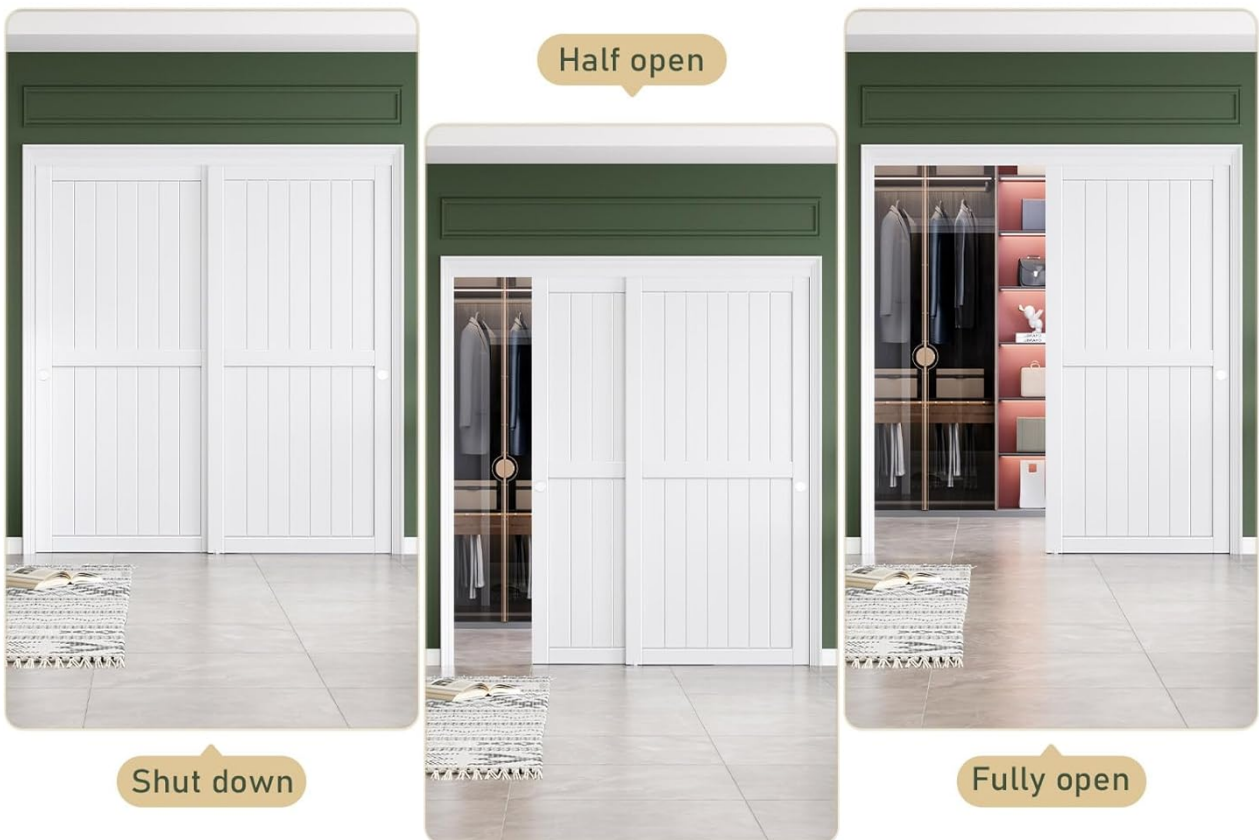


Image: Illustration of the three operational modes: fully closed, half open, and fully open.

Door Operation Modes:

- **Fully Closed (Shut Down):** Both door panels are positioned to cover the entire opening, providing a tidy and private look.
- **Half Open:** One door panel is slid behind the other, allowing partial access to the opening.
- **Fully Open:** Both door panels are slid to one side, maximizing the opening for full access.

To operate, gently push or pull the door panels using the installed handles. The high-quality silent rollers ensure a smooth and quiet glide.

4. MAINTENANCE

Regular maintenance will ensure the longevity and smooth operation of your FREDBECK Sliding Closet Doors.

Cleaning:

- The PVC surface is waterproof and easy to clean. Use a soft, damp cloth to wipe down the door panels.
- For tougher spots, a mild, non-abrasive cleaner can be used. Avoid harsh chemicals that may damage the PVC finish.
- Wipe away any fingerprints or dust regularly to maintain the clean white appearance.

Hardware Care:

- Periodically check the track and rollers for any debris or dust accumulation. Clean with a dry cloth or soft brush.
- Ensure all screws and fasteners on the track and door hardware remain tight. Tighten if necessary to prevent rattling or misalignment.
- The hardware is designed to be durable and corrosion-resistant, but keeping it clean will help maintain its smooth function.

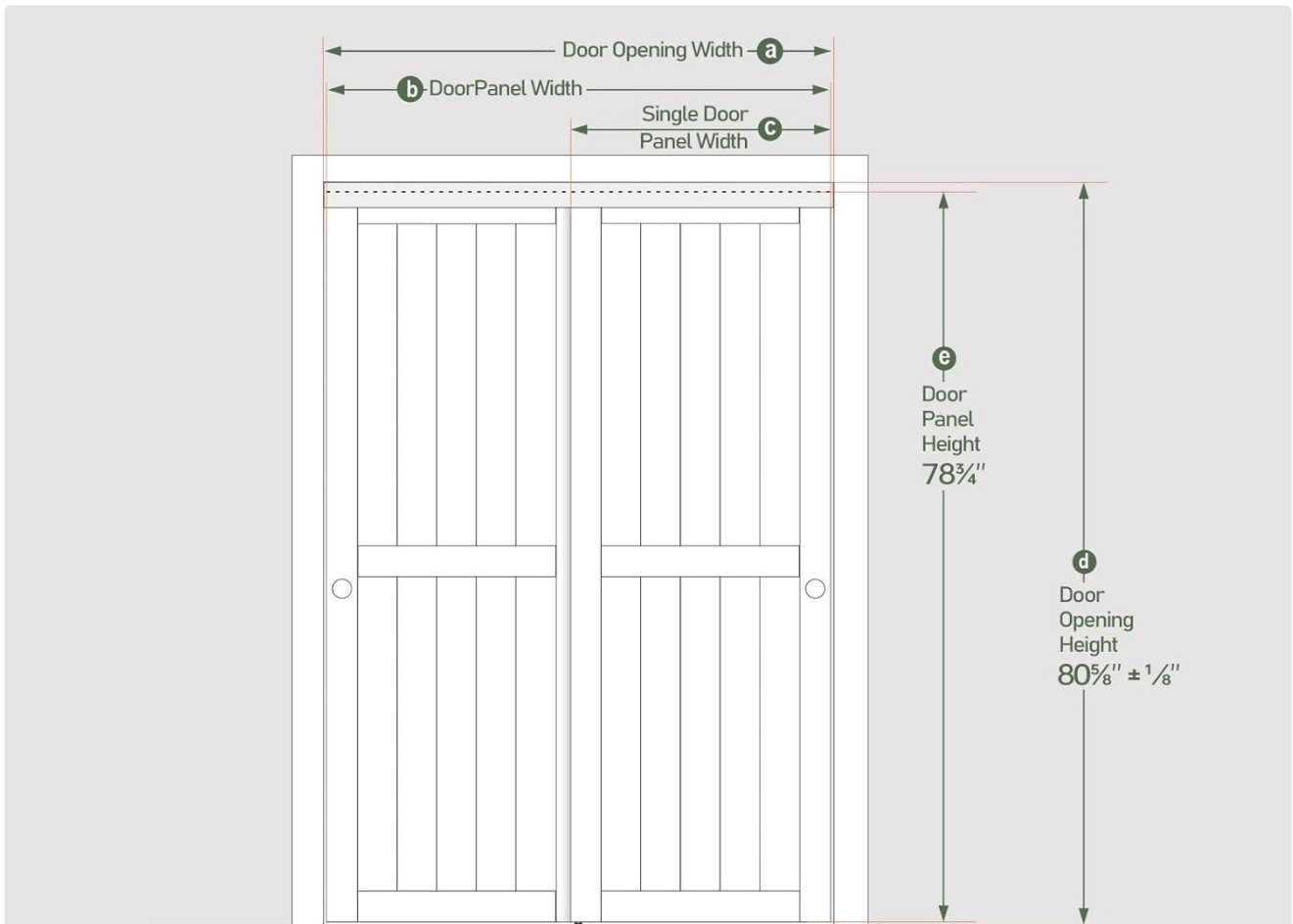
5. TROUBLESHOOTING

If you encounter any issues with your FREDBECK Sliding Closet Doors, refer to the following common problems and solutions:

Problem	Possible Cause	Solution
Doors do not slide smoothly or get stuck.	Debris in the track, loose rollers, misaligned track or floor guide.	Clean the track of any obstructions. Check and tighten roller attachments. Verify the track and floor guide are level and properly aligned.
Doors rattle or wobble.	Loose hardware, improper installation of floor guide.	Ensure all mounting screws for the track and floor guide are securely fastened. Adjust the floor guide to properly engage the door panels.
Handles are loose or missing.	Handles not properly secured during assembly.	Ensure the round pull handles are correctly installed and tightened. If the product arrived with extra handle pieces without clear placement, refer to the installation diagram or contact customer support.
Glue strip on fascia board is dry.	Manufacturing variation or age.	Apply new double-sided tape or appropriate adhesive to secure the fascia board.

6. SPECIFICATIONS

Detailed specifications for the FREDBECK Sliding Closet Doors (Model MB-PVC-BP-01H-3780A-X2):



Option Size	a Door Opening Width	b Door Panel Width	c Single Door Panel Width	d Door Opening Height	e Door Panel Height	Door Thickness
48in x 80in	46in ~ 48in	48in	25in	80 ⁵ / ₈ in ± 1/ ₈ in	78 ³ / ₄ in	0.83in
60in x 80in	58in ~ 60in	60in	31in			
64in x 80in	62in ~ 64in	64in	33in			
72in x 80in	70in ~ 72in	72in	37in			

Image: Detailed dimensions for various door sizes, including the 72x80 model.

Attribute	Value
Brand	FREDBECK
Model Number	MB-PVC-BP-01H-3780A-X2
Overall Dimensions	72 inches (Width) x 80 inches (Height)
Door Panel Dimensions (Each)	37 inches (Width) x 78-3/4 inches (Height)
Door Thickness	7/8 inch (0.83 inches)
Material	MDF with PVC Surface, Pine Wood Core
Color	White (Cool White, not pure white)

Attribute	Value
Included Components	2 Barn Door Panels, 72 inch Bypass Pocket Door Hardware Track Kit, 2 Pull Handles

7. WARRANTY AND SUPPORT

Warranty Information:

Specific warranty details for the FREDBECK Sliding Closet Doors are not provided in the product information. For warranty inquiries, please retain your proof of purchase and contact FREDBECK customer service directly.

Customer Support:

If you have any questions, require assistance with installation, or need to report a missing or damaged part, please contact FREDBECK customer service. Refer to the contact information provided with your product packaging or visit the official FREDBECK store on Amazon for support options.

FREDBECK Store Link: [Visit the FREDBECK Store](#)