



[Manuals.plus](#) /

› [KBBYT](#) /

› [KBBYT HK42FZ018 Integrated Furnace Control Board User Manual](#)

KBBYT HK42FZ018 Furnace Control Board

KBBYT HK42FZ018 Integrated Furnace Control Board

USER MANUAL

1. Introduction

This manual provides instructions for the proper installation, operation, and maintenance of the KBBYT HK42FZ018 Integrated Furnace Control Board. This control board is designed as a direct replacement for specific Carrier, Bryant, and Payne furnace models, ensuring seamless integration and reliable performance.

The HK42FZ018 board manages the various functions of your furnace, including ignition, fan control, and safety monitoring. Adherence to these instructions is crucial for safe and efficient operation.

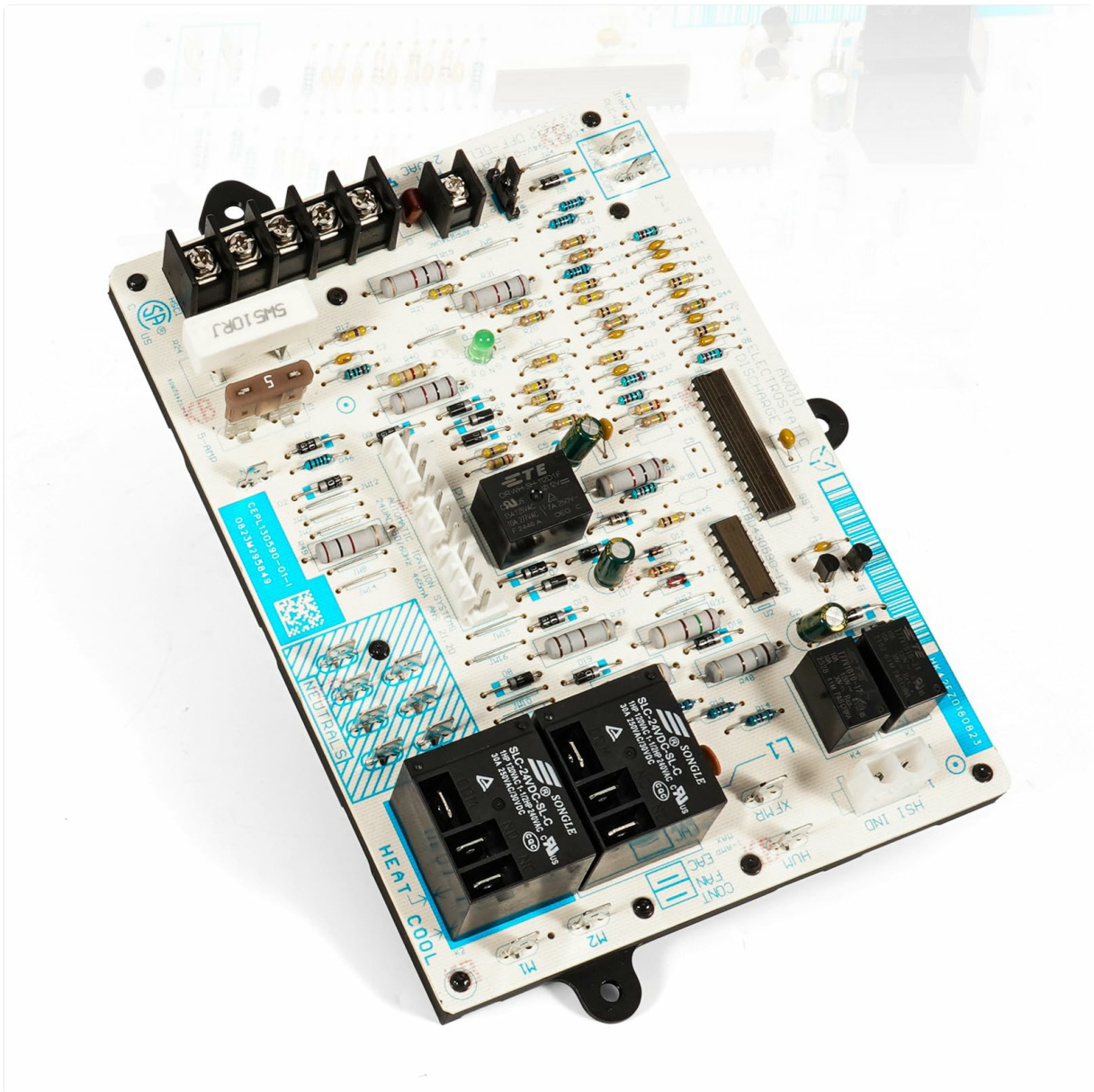


Image 1: The KBBYT HK42FZ018 Integrated Furnace Control Board, highlighting its primary function as a replacement for OE part numbers HK42FZ018, CEPL130590-01, CEBD430590-10A, and 117255.

2. Safety Information

WARNING: Installation and servicing of heating, ventilation, and air conditioning (HVAC) equipment can be hazardous due to electrical components and gas connections. This product must be installed and serviced by a qualified HVAC technician or licensed electrician. Failure to follow these instructions could result in property damage, personal injury, or death.

- Always disconnect all electrical power to the furnace before installing or servicing the control board.
- Ensure proper grounding of the furnace and all electrical connections.
- Verify that all wiring connections are secure and comply with local and national electrical codes.
- Do not operate the furnace if any part is submerged in water. Contact a qualified service technician immediately.

3. Compatibility

The KBBYT HK42FZ018 Integrated Furnace Control Board is compatible with a wide range of Carrier, Bryant, and Payne furnace models. It replaces original equipment manufacturer (OEM) part numbers HK42FZ018, CEPL130590-01, CEBD430590-10A, and 117255.

Verify your furnace model number against the list below to ensure compatibility. This board is engineered for seamless integration, featuring identical plug connectors and mounting points to the original.

Compatible Furnace Models (Partial List):

359AAV036080AAAA

359AAV048080AAAA

359AAV060100AAAA

58HDX060 10112

58HDX080 10112

58HDX080 10116

58HDX100 10120

PG9YAA036060ABSS

PG9YAA036060ACSS

PG9YAA036080ABSS

PG9YAA036080ACSS

PG9YAA048080ABSS

PG9YAA048080ACSS

PG9YAA060100ABSS

PG9YAA060100ACSS

PG9YAB036080AAAA

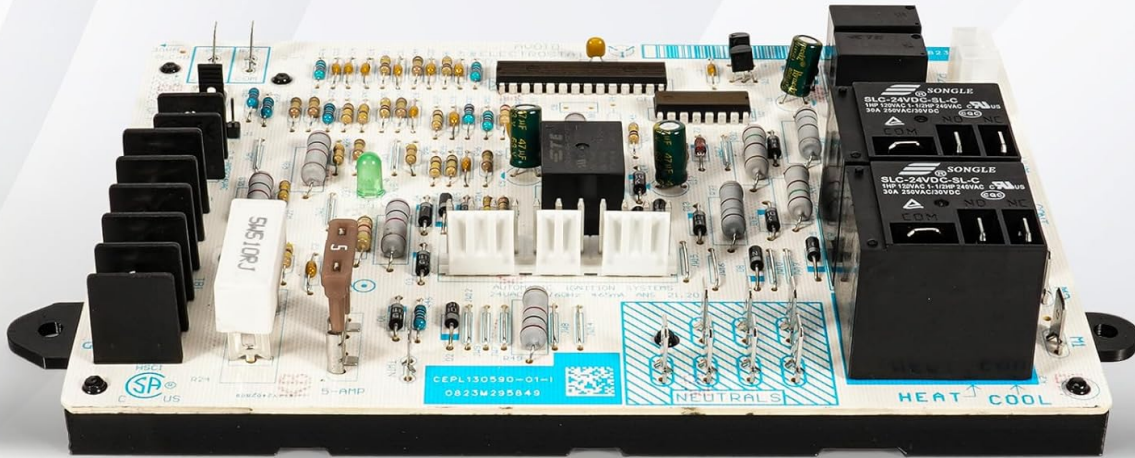
PG9YAB048080AAAA

PG9YAB060100AAAA

For a comprehensive list of compatible models, please refer to the product listing or contact customer support.

OTHER COMPATIBLE MODELS

CEPL130590-01
CEBD430590-10A



- | | | | |
|-----------------|-----------------|-----------------|-----------------|
| ■ C8DNL050B12B1 | ■ H8DNL075B12B1 | ■ MUF140W5C2 | ■ T8DNL050B12B2 |
| ■ C8DNL050B12B2 | ■ H8DNL075B12B2 | ■ N8MPL050B12B1 | ■ T8DNL075B12B1 |
| ■ C8DNL075B12B1 | ■ H8DNL075F16B1 | ■ N8MPL050B12B2 | ■ T8DNL075B12B2 |
| ■ C8DNL075B12B2 | ■ H8DNL075F16B2 | ■ N8MPL075B12B1 | ■ T8DNL075F16B1 |
| ■ C8DNL075F16B1 | ■ H8DNL100F14B1 | ■ N8MPL075B12B2 | ■ T8DNL075F16B2 |
| ■ C8DNL075F16B2 | ■ H8DNL100F14B2 | ■ N8MPL075F16B1 | ■ T8DNL100F14B1 |
| ■ C8DNL100F14B1 | ■ H8DNL100L20B1 | ■ N8MPL075F16B2 | ■ T8DNL100F14B2 |
| ■ C8DNL100F14B2 | ■ H8DNL100L20B2 | ■ N8MPL100F20B1 | ■ T8DNL100L20B1 |
| ■ C8DNL100L20B1 | ■ MUF050W3C2 | ■ N8MPL100F20B2 | ■ T8DNL100L20B2 |
| ■ C8DNL100L20B2 | ■ MUF075W3C2 | ■ N8MPL100J22B1 | |
| ■ H8DNL050B12B1 | ■ MUF100W3C2 | ■ N8MPL100J22B2 | |
| ■ H8DNL050B12B2 | ■ MUF125W5C2 | ■ T8DNL050B12B1 | |

Note: For a full list of compatible models, visit our A+ Content page.

Image 2: The control board displaying additional compatible model numbers and replacement part numbers CEPL130590-01 and CEBD430590-10A.

4. Setup and Installation

IMPORTANT: Installation should only be performed by a qualified HVAC technician. Incorrect installation can lead to equipment malfunction, property damage, or serious injury.

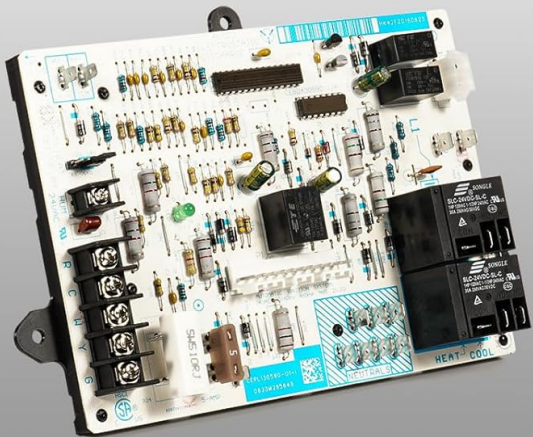
Installation Steps:

1. **Power Disconnection:** Turn off all electrical power to the furnace at the main service panel. Verify power is off using a voltage meter.
2. **Access Control Board:** Open the furnace access panel to locate the existing control board.
3. **Document Wiring:** Carefully photograph or diagram all wiring connections to the existing board before disconnecting. This will aid in correct re-connection.
4. **Disconnect Wires:** Disconnect all wires and connectors from the old control board.
5. **Remove Old Board:** Unmount and remove the old control board.
6. **Install New Board:** Mount the new KBBYT HK42FZ018 control board in the same location as the old board. Ensure it is securely fastened.
7. **Connect Wires:** Reconnect all wires and connectors to the new board according to your documentation. Double-check each connection for accuracy and tightness.

8. **Close Panel:** Close and secure the furnace access panel.
9. **Restore Power:** Restore electrical power to the furnace at the main service panel.
10. **Test Operation:** Initiate a heating cycle to verify proper furnace operation. Observe for any error codes or unusual behavior.



IDEAL REPLACEMENT



Rigorously
Tested



Precision
Engineered



Exceptional
Longevity



Plug-and-Play
Installation

Image 3: A qualified technician performing an installation of a furnace control board, demonstrating the typical environment for this procedure.

5. Operating Instructions

The KBBYT HK42FZ018 Integrated Furnace Control Board operates automatically once installed and power is restored. It is designed to manage the furnace's heating cycles based on thermostat commands and internal safety protocols.

Normal Operation:

- When the thermostat calls for heat, the control board initiates the ignition sequence.
- Upon successful ignition, the board monitors the flame and activates the circulating fan to distribute warm air.
- Once the thermostat's set temperature is reached, the board safely shuts down the heating cycle.
- The board continuously monitors safety limits and will shut down the furnace if an unsafe condition is

detected.

Refer to your furnace's specific user manual for detailed operating instructions related to your overall heating system.

6. Maintenance

The HK42FZ018 control board itself requires minimal direct maintenance. However, regular maintenance of your furnace system is essential for the longevity and proper functioning of all components, including the control board.

Recommended Maintenance Practices:

- **Annual Furnace Inspection:** Have a qualified HVAC technician perform an annual inspection and tune-up of your furnace. This includes checking electrical connections, cleaning components, and verifying safety controls.
- **Air Filter Replacement:** Regularly replace or clean your furnace's air filter as recommended by the furnace manufacturer. A dirty filter can restrict airflow, causing the furnace to overheat and potentially stress electrical components.
- **Clear Vents:** Ensure all supply and return air vents are unobstructed to maintain proper airflow.

7. Troubleshooting

If your furnace is not operating correctly after installing the new control board, consider the following troubleshooting steps. Always ensure power is disconnected before inspecting internal components.

Common Issues and Solutions:

- **No Power to Furnace:** Check the circuit breaker for the furnace. Ensure the furnace disconnect switch is in the 'ON' position.
- **Furnace Not Starting:** Verify that the thermostat is set to 'HEAT' and the temperature setting is above the current room temperature. Check all wiring connections to the control board for looseness or incorrect placement.
- **Error Codes:** Many furnace control boards have diagnostic LED lights that flash specific codes to indicate issues. Consult your furnace's manual for the meaning of any displayed error codes.
- **Fan Not Running:** Ensure the thermostat fan setting is not set to 'OFF'. If the fan still doesn't run during a heating cycle, there may be an issue with the fan motor or its connection to the control board.

If troubleshooting does not resolve the issue, contact a qualified HVAC technician for further diagnosis and repair.

8. Specifications



CONTROL BOARD

Perfect Replacement for Carrier/Bryant/Payne Furnace Specific Models



High-Efficiency Operation



Excellent Operational Stability



Easy to Install and Maintain

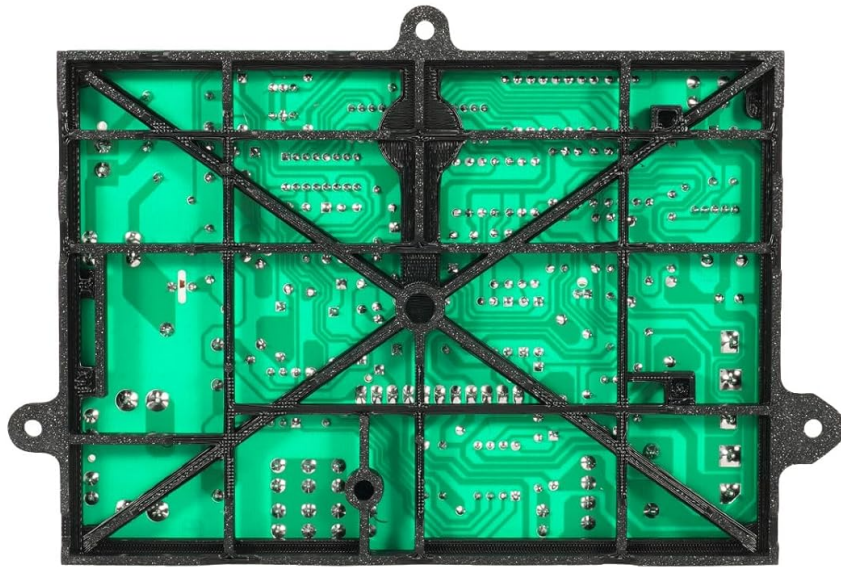


Image 4: Detailed views of the KBBYT HK42FZ018 Integrated Furnace Control Board, showcasing its various electronic components and connectors.

Feature	Detail
Manufacturer	KBBYT
Part Number	HK42FZ018
Item Model Number	Furnace Control Board
Item Weight	2 pounds
Product Dimensions	4 x 4 x 2 inches
Color	Grey Green
Item Package Quantity	1
Included Components	UIBS Ignitor Board
Batteries Required?	No
ASIN	B0FWPSGRB9

Feature	Detail
Date First Available	October 17, 2025

9. Warranty Information

This KBBYT HK42FZ018 Integrated Furnace Control Board comes with a 90-day warranty from the date of purchase. This warranty covers defects in materials and workmanship under normal use. For warranty claims or further details, please contact the seller or manufacturer.

10. Support and Contact

For technical assistance, installation questions, or any concerns regarding your KBBYT HK42FZ018 Integrated Furnace Control Board, please contact the seller directly through the platform where the purchase was made. For complex issues or furnace-specific problems, it is recommended to consult a certified HVAC professional.