

## Monster AC339

# Monster Open Ear AC339 Earbuds Instruction Manual

Model: AC339

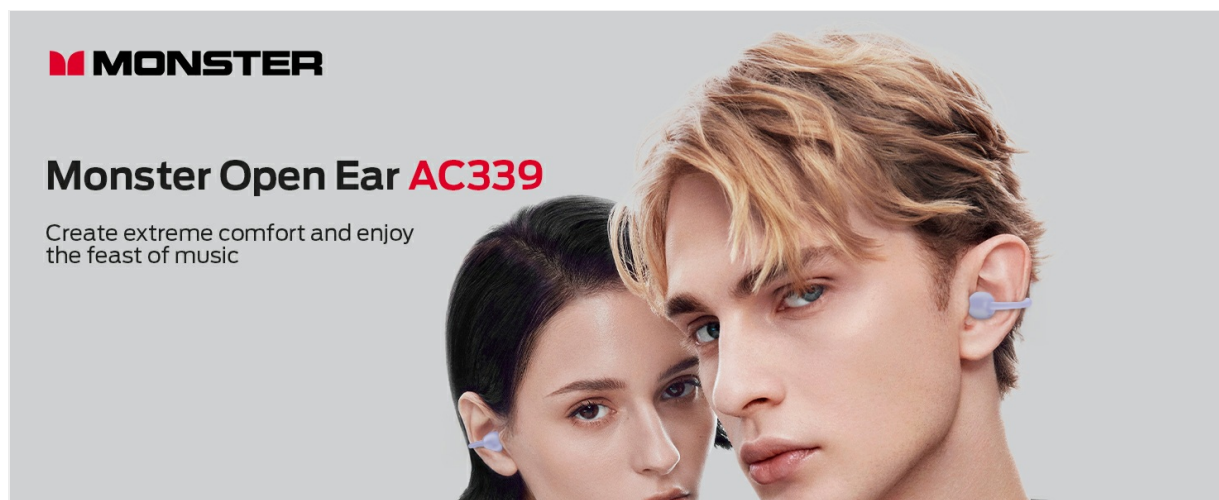
## 1. INTRODUCTION

---

Thank you for choosing the Monster Open Ear AC339 Earbuds. These earbuds are designed to provide a comfortable listening experience with high-fidelity audio, intuitive touch controls, and robust water resistance. This manual will guide you through the setup, operation, and maintenance of your new earbuds.

### Product Overview

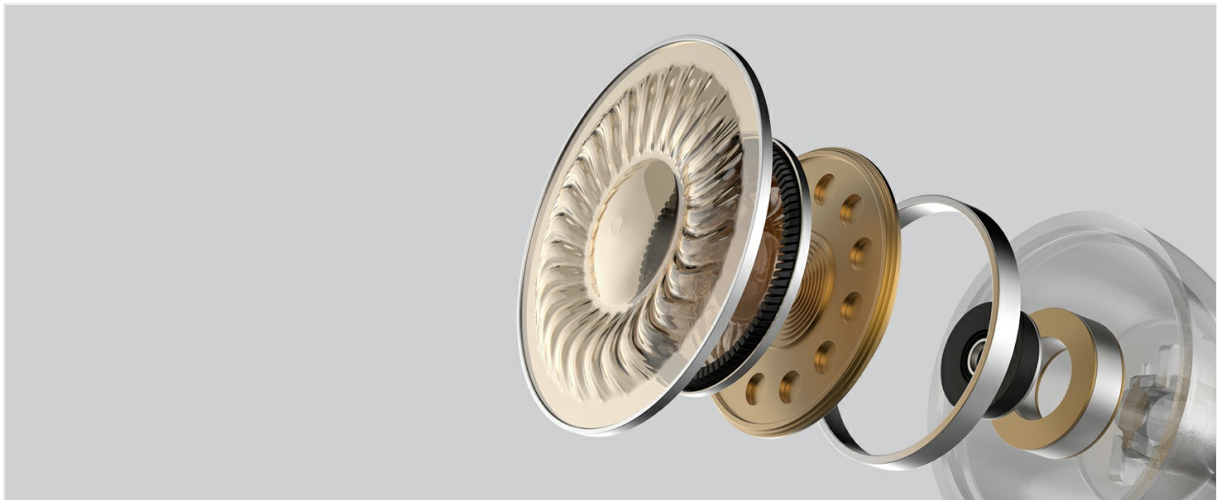
The Monster Open Ear AC339 Earbuds feature an open-ear clip design for comfort and situational awareness. They offer clear, immersive sound and are equipped with Bluetooth 5.4 for stable connectivity. With IPX6 water resistance, they are suitable for various activities, including workouts and outdoor use.



Each earbud weighs approximately 5.2 grams, ensuring a lightweight and comfortable fit.



The earbuds are engineered for excellent sound quality, delivering rich bass, clear vocals, and pristine highs.



The new open-ear design ensures a secure and comfortable fit, preventing them from easily falling off during use.

## 2. SETUP

---

### What's in the Box

- Monster Open Ear AC339 Earbuds
- Charging Case
- USB-C Charging Cable
- User Manual

### Charging the Earbuds and Case

Before first use, fully charge the earbuds and charging case. Place the earbuds into the charging case, then connect the USB-C charging cable to the case and a power source. The digital display on the case will indicate the battery level. A full charge provides up to 40 hours of total playback time with the charging case, and the earbuds support two-hour fast charging.

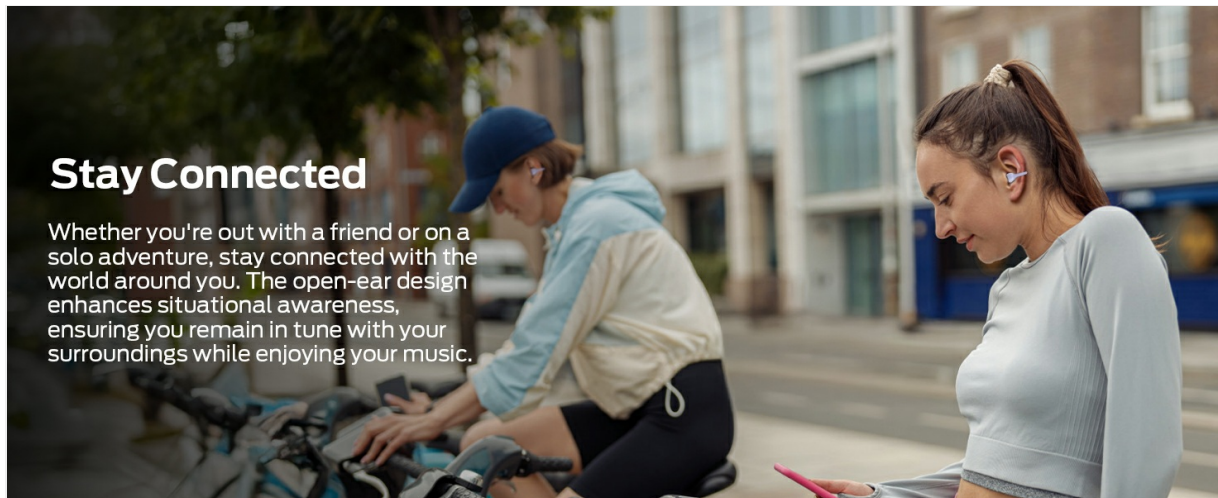


The charging case provides extended battery life, offering up to 40 hours of total listening time.

## Wearing the Earbuds

To ensure optimal sound and comfort, correctly position the earbuds:

1. Identify the left (L) and right (R) earbuds.
2. Gently place the earbud onto your ear, ensuring the open-ear clip design sits securely around your earlobe.
3. Rotate the earbud slightly to achieve a comfortable and stable fit. The sound outlet should be positioned near your ear canal without entering it directly.



## Stay Connected

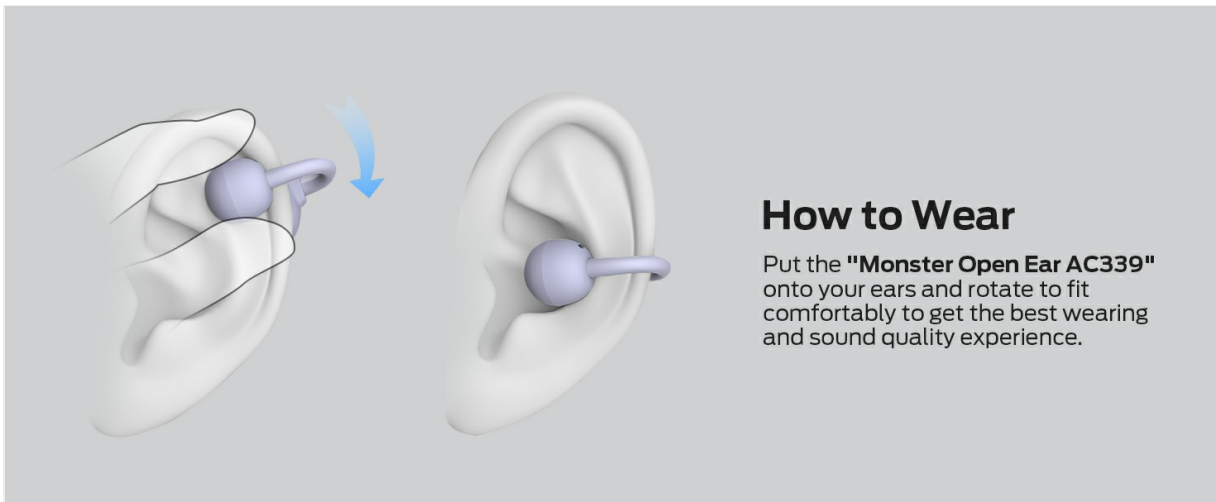
Whether you're out with a friend or on a solo adventure, stay connected with the world around you. The open-ear design enhances situational awareness, ensuring you remain in tune with your surroundings while enjoying your music.

Properly wear the earbuds by placing them on your ears and rotating for a secure and comfortable fit.

## Bluetooth Pairing

To connect your earbuds to a device:

1. Ensure the earbuds are charged and in the charging case.
2. Open the charging case. The earbuds will automatically enter pairing mode, indicated by a flashing light (if applicable, refer to LED indicator section for details).
3. On your device (smartphone, tablet, etc.), go to Bluetooth settings and turn Bluetooth on.
4. Search for available devices and select "Monster Open Ear AC339" from the list.
5. Once connected, the earbuds will indicate successful pairing (e.g., a voice prompt or solid light).



## How to Wear

Put the **"Monster Open Ear AC339"** onto your ears and rotate to fit comfortably to get the best wearing and sound quality experience.

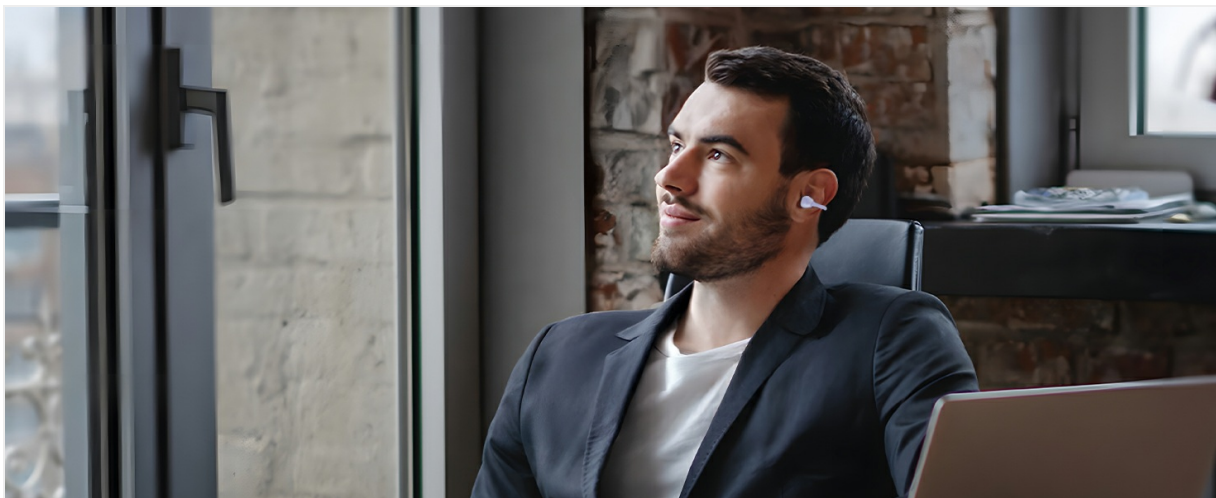
Connect your earbuds by selecting "Monster Open Ear AC339" in your device's Bluetooth settings.

## 3. OPERATING INSTRUCTIONS

### Touch Controls

The Monster Open Ear AC339 Earbuds feature sensitive binaural touch controls. The following actions can be performed by tapping or holding the touch area on either earbud:

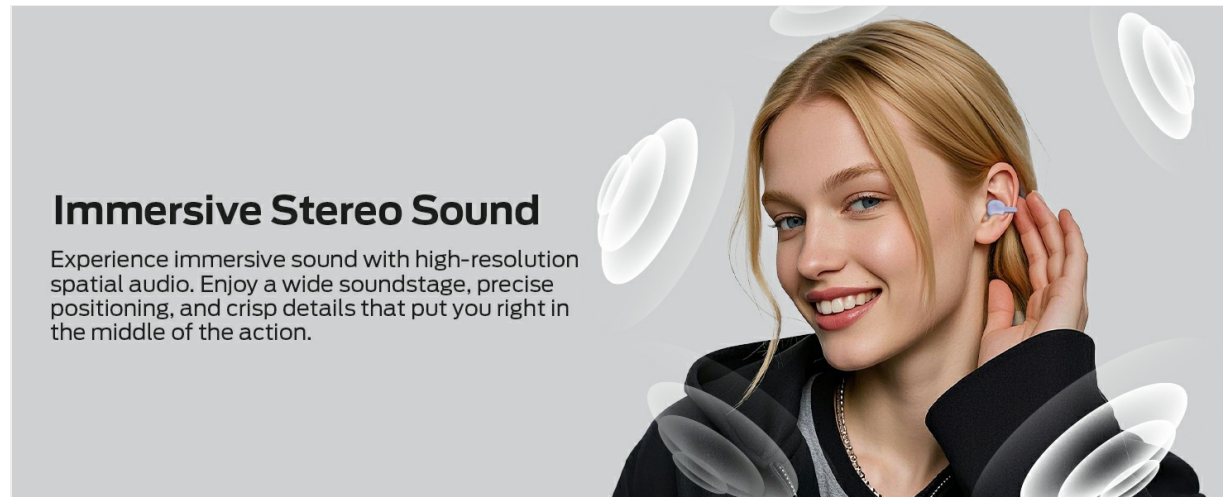
Action	Function
Click x 2 (Left or Right)	Answer/End Call, Play/Pause Music
Hold x 2s (Left or Right)	Reject Call, Activate Voice Assistant
Click x 3 (Left)	Previous Song
Click x 1 (Left)	Volume Down
Click x 3 (Right)	Next Song
Click x 1 (Right)	Volume Up



Refer to this diagram for a visual guide to the touch control functions.

### Audio Sharing

The earbuds support audio sharing, allowing two users to enjoy the same audio content simultaneously from a single device. Ensure both earbuds are connected to the same device and properly worn.



## Immersive Stereo Sound

Experience immersive sound with high-resolution spatial audio. Enjoy a wide soundstage, precise positioning, and crisp details that put you right in the middle of the action.

Enjoy shared audio experiences with another person using the audio sharing feature.

## 4. MAINTENANCE

---

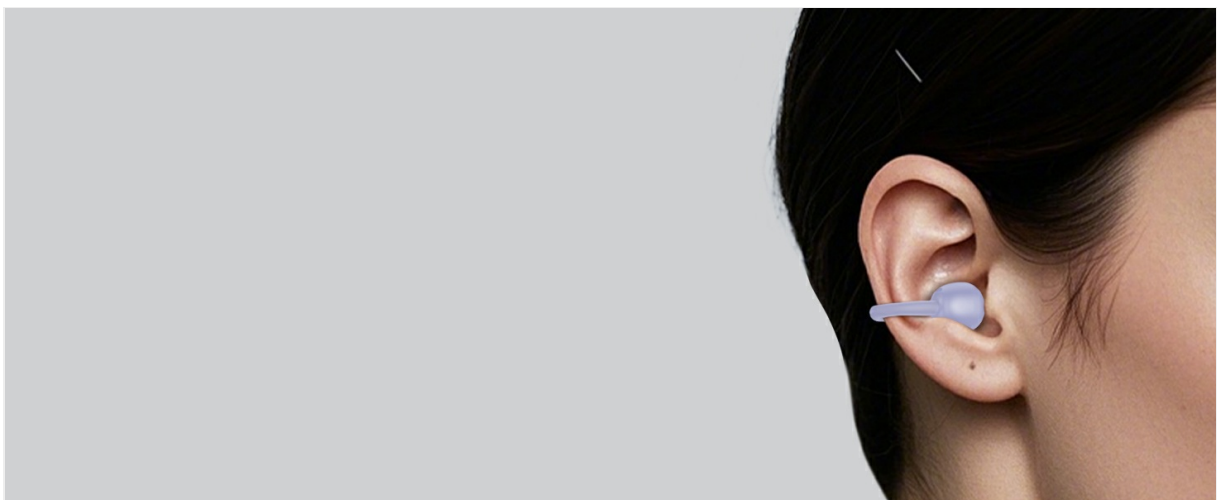
### Cleaning

To maintain optimal performance and hygiene:

- Regularly wipe the earbuds and charging case with a soft, dry, lint-free cloth.
- Do not use abrasive cleaners, solvents, or aerosol sprays.
- Ensure charging contacts are clean and dry before placing earbuds in the case.

### Water Resistance

The Monster Open Ear AC339 Earbuds are IPX6 water-resistant. This means they can withstand strong jets of water from any direction, making them suitable for workouts and light rain. However, they are not designed for submersion in water. Do not swim or shower with the earbuds, and ensure they are dry before placing them back in the charging case.



The IPX6 rating protects your earbuds from sweat and light rain, but they should not be submerged.

### Storage

When not in use, store the earbuds in their charging case to protect them from dust, damage, and to keep them charged.

## 5. TROUBLESHOOTING

---

If you encounter any issues with your Monster Open Ear AC339 Earbuds, please refer to the following common solutions:

Problem	Possible Solution
Earbuds not pairing	<ul style="list-style-type: none"><li>◦ Ensure earbuds are charged.</li><li>◦ Turn off and on your device's Bluetooth.</li><li>◦ Forget the device in your Bluetooth settings and re-pair.</li><li>◦ Place earbuds back in case, close, then open to re-enter pairing mode.</li></ul>
No sound from one or both earbuds	<ul style="list-style-type: none"><li>◦ Check device volume and earbud volume.</li><li>◦ Ensure earbuds are properly seated in your ears.</li><li>◦ Reconnect the earbuds to your device.</li><li>◦ Try playing audio from a different application or device.</li></ul>
Charging issues	<ul style="list-style-type: none"><li>◦ Ensure the charging cable is securely connected.</li><li>◦ Check if the power source is working.</li><li>◦ Clean the charging contacts on both earbuds and the case.</li><li>◦ Try a different USB-C cable or power adapter.</li></ul>
Touch controls not responding	<ul style="list-style-type: none"><li>◦ Ensure your fingers are clean and dry.</li><li>◦ Restart the earbuds by placing them in the case and taking them out.</li><li>◦ Ensure the earbuds are connected to your device.</li></ul>

## 6. SPECIFICATIONS

---

Feature	Detail
Brand	Monster
Model Name	AC339 (Wireless Headset)
Model Number	E98
Connectivity Technology	Bluetooth 5.4

Feature	Detail
Ear Placement	Open Ear
Form Factor	Open Ear
Water Resistance	IPX6
Battery Life	Up to 40 hours (with charging case)
Earbud Weight	5.2g (each)

## 7. WARRANTY AND SUPPORT

---

### Warranty Information

The Monster Open Ear AC339 Earbuds come with a 1-year manufacturer's warranty from the date of purchase. This warranty covers defects in materials and workmanship under normal use. Please retain your proof of purchase for warranty claims.

### Customer Support

For any inquiries, technical assistance, or warranty claims, please contact Monster customer service. You can typically find contact information on the official Monster website or through your retailer's support channels. Our professional customer service team is ready to assist you.