

Garvee 34P3K4hUBLNnZaUBg0kxNwUhQ9y

Garvee 40 Inch Bird Cage Instruction Manual

Model: 34P3K4hUBLNnZaUBg0kxNwUhQ9y

[Instructions](#) [Maintenance](#) [Product Overview](#) [Setup & Assembly](#) [Troubleshooting](#) [Operating](#) [Specifications](#) [Warranty & Support](#)

1. PRODUCT OVERVIEW

The Garvee 40 Inch Bird Cage is designed to provide a spacious and comfortable living environment for small to mid-sized birds such as parrots, parakeets, cockatiels, and lovebirds. Constructed from durable alloy steel with an oxidant-resistant powder coating, this cage offers enhanced safety and longevity. Key features include an open-top design for interactive play, multiple access doors, a convenient slide-out tray for easy cleaning, and 360-degree swivel wheels for effortless mobility.

- **Open Top Design:** Allows for interaction and stimulation outside the cage.
- **Pet-Parent Friendly Features:** Includes handles for easy lifting, small entrances on front doors, and feeding doors on side panels for convenient refilling.
- **Hassle-Free Maneuverability:** Equipped with four 360-degree swivel wheels (two with locks) for easy relocation and secure placement.
- **Easy Cleaning:** Features a water-resistant slide-out tray and metal grate to simplify waste removal and maintain hygiene.
- **Solid Metal Construction:** Made from powder-coated alloy steel for high strength, improved safety, and durability.

2. SETUP & ASSEMBLY

Your Garvee 40 Inch Bird Cage comes with all necessary parts, hardware, and tools for assembly. Follow the illustrated instructions provided in the package for a smooth setup process. Below are general steps and visual aids to guide you.

2.1 Unpacking and Part Identification

Carefully unpack all components and verify against the parts list in your manual. Ensure all pieces are present and undamaged before proceeding.



Image: Garvee 40 Inch Bird Cage showcasing its openable top design. The image highlights the cage's overall structure and the functionality of the top opening.

2.2 Base Assembly

Begin by assembling the base frame. Attach the side panels to the bottom panel using the provided screws and tools. Ensure all connections are secure.



Image: A person assembling the base of the bird cage, attaching side panels.

2.3 Attaching Wheels

Once the base is stable, attach the four 360-degree swivel wheels to the bottom of the stand. Two of these wheels are equipped with locks for added stability when the cage is stationary.



Image: A person installing the swivel wheels onto the bird cage stand.

2.4 Installing Trays and Grates

Slide the metal grate and the water-resistant plastic tray into their designated slots at the bottom of the cage. Ensure they are properly seated for easy removal during cleaning.

SPACIOUS & COMFORTABLE

Provide Large Space for Activities



Suitable for medium and small sized birds



Open and close top at any time

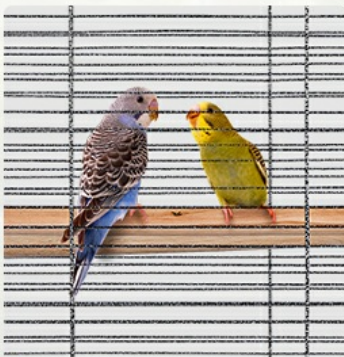


Image: A person sliding the bottom tray into the bird cage.

2.5 Adding Perches and Accessories

Insert the wooden perches through the cage bars at desired heights. Attach the feeding cups to the designated feeding doors on the side panels. The open-top perch can be installed on the top opening for additional interaction space.

Practical Accessories



2 Wood Perches

- Nice-looking and comfortable



2 Plastic Feeding Cups

- Sufficient food to snack on



Image: A person installing wooden perches and feeding cups inside the bird cage.

DRAWER BOTTOM TRAY

Make Cleaning a Breeze



Solid Connection

No More Bird Droppings Build up

Effortless Pull-Out Easy Cleaning

Image: A person attaching the top perch to the openable roof of the bird cage.

3. OPERATING INSTRUCTIONS

3.1 Accessing the Cage

The cage features multiple access points for convenience:

- **Front Doors:** Each front door has small entrances that can be opened for bird access or interaction.
- **Side Feeding Doors:** Located on the side panels, these doors allow for easy refilling of food and water without disturbing your birds.
- **Open-Top Design:** The top of the cage can be opened to provide an additional perch and a convenient way to interact with your birds outside the main enclosure.

2 FEEDING CUPS

More convenient to open doors and feed food



Your birds will always have something to snack on.

Image: The Garvee 40 Inch Bird Cage showing two feeding cups attached to the side doors, illustrating easy access for feeding.

3.2 Moving the Cage

The cage is equipped with four 360-degree swivel wheels for easy movement. Two of these wheels have locks. To move the cage, unlock the wheels. To secure the cage in place, engage the wheel locks.

SAFE AND SECURE

Latches are strong and durable



Flexible Switch

360°
Roller Feet

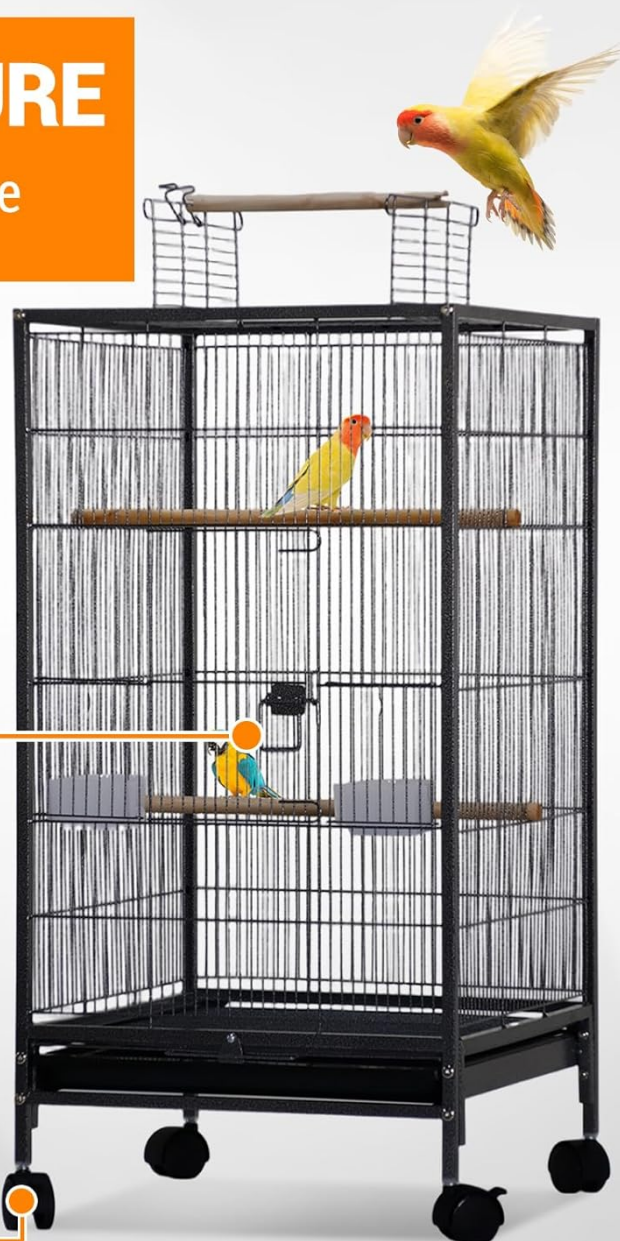


Image: Close-up of the Garvee 40 Inch Bird Cage's 360-degree roller feet, highlighting the mobility feature.

4. MAINTENANCE

4.1 Cleaning the Tray and Grate

The water-resistant plastic tray and metal grate are designed to slide out easily for cleaning. Regularly remove and clean these components to maintain a hygienic environment for your birds. Use mild soap and water, and ensure they are completely dry before returning them to the cage.

EASY CLEANING

Slide out the bottom tray and wash it off



Easy To Clean



Image: The Garvee 40 Inch Bird Cage demonstrating the easy-to-clean slide-out bottom tray.

4.2 General Cage Cleaning

Periodically wipe down the cage bars and surfaces with a bird-safe cleaner. Inspect perches and toys for wear and tear, replacing them as needed to ensure your bird's safety and comfort.

5. TROUBLESHOOTING

- **Difficulty Assembling:** Refer to the detailed illustrated instructions provided with your product. Ensure all parts are correctly oriented before tightening screws.
- **Wobbly Cage:** Check that all screws are securely tightened. Ensure the wheels are properly installed and, if applicable, the locking mechanisms are engaged when stationary.
- **Stuck Tray:** Verify that the tray and grate are aligned correctly in their tracks. Clean any debris that might be

obstructing their movement.

6. SPECIFICATIONS

Feature	Detail
Brand	Garvee
Model Number	34P3K4hUBLNnZaUBg0kxNwUhQ9y
Product Dimensions (L x W x H)	18" x 18" x 40"
Item Weight	16.3 Pounds
Material	Alloy Steel
Color	Black
Special Feature	Durable, Open Top, Wheels, Slide-out Tray
Included Components	Stand, Wooden Perches, Feeding Cups
Target Audience	Small to Mid-Sized Birds (Parrot, Parakeet, Cockatiel, Lovebird, Pigeon)



Image: Detailed diagram showing the dimensions of the Garvee 40 Inch Bird Cage, including height, width, and bar spacing.

7. WARRANTY & SUPPORT

For warranty information, product support, or to inquire about replacement parts, please contact Garvee customer service directly. Refer to the contact details provided in your product packaging or visit the official Garvee website.

