

[Manuals.plus](#) /

> [ChunHee](#) /

> ChunHee Wireless Dog Doorbell for Potty Training User Manual

ChunHee Chunhee

ChunHee Wireless Dog Doorbell User Manual

Model: Chunhee (Black-2 Button & 2 Receiver)

Brand: ChunHee

INTRODUCTION

Thank you for choosing the ChunHee Wireless Dog Doorbell. This system is designed to assist in potty training your dog by providing a clear and consistent way for them to communicate their need to go outside. This manual provides detailed instructions for setup, operation, maintenance, and troubleshooting to ensure optimal performance and a positive training experience for both you and your pet.



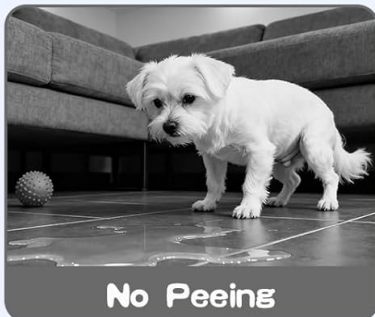
Image: The ChunHee Wireless Dog Doorbell system, featuring two black buttons with paw print icons and two compact receivers.

PACKAGE CONTENTS

Please verify that all items are present in your package:

- Wireless Receiver (2 units)
- Wireless Transmitter Button (2 units)
- CR2430 Battery (2 units, pre-installed in buttons)
- Mounting Accessories (Adhesive pads)
- User Manual (This document)

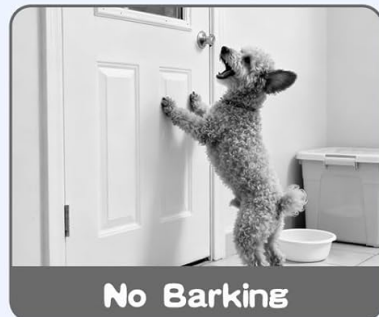
Let Your Dog Tell You When it's Time to Go Outside



No Peeing



No Scratching



No Barking

Image: An illustration showing the individual components included in the ChunHee Wireless Dog Doorbell package.

SETUP INSTRUCTIONS


Follow these steps to set up your ChunHee Wireless Dog Doorbell system:

1. **Install Receiver:** Plug the wireless receiver into a standard wall outlet in a central location where you can easily hear the chime.
2. **Install Transmitter Button:** Choose a suitable location for the transmitter button, such as near a door at your dog's nose or paw height. Ensure the surface is clean and dry. Remove the protective film from the adhesive pad on the back of the button and firmly press it onto the desired surface. Alternatively, the button can be placed on the floor.
3. **Battery Activation:** The CR2430 battery is pre-installed. Ensure the plastic pull tab (if present) has been removed to activate the battery.



Image: A visual guide demonstrating the three-step installation process for the doorbell button and receiver.

Plug and Play



Easy To Install



On Door



On Glass



on Floor




Image: Examples of flexible installation options for the ChunHee dog doorbell, including mounting on a door, glass, or placing on the floor.

Pairing Transmitter and Receiver

Your doorbell system should be pre-paired. If re-pairing is needed or you add more buttons/receivers, follow these steps:

1. Plug the receiver into a socket.
2. Press the "Forward" or "Backward" button on the receiver to select your desired melody.
3. Press and hold the "Volume" button on the receiver for 5 seconds until it makes a "Ding" sound and the receiver indicator flashes.
4. Touch the transmitter button quickly within 8 seconds. The receiver will make a "Ding-Ding" sound, and the indicator will flash, confirming successful pairing.



Image: A step-by-step diagram illustrating the pairing process for the doorbell components.

OPERATING INSTRUCTIONS

Adjusting Ringtones and Volume

The system offers 55 chimes and 5 adjustable volume levels (0-110 dB).

- **Change Melody:** Press the "Forward" or "Backward" button on the receiver to cycle through the 55 available melodies.
- **Adjust Volume:** Press the "Volume" button on the receiver to cycle through the 5 volume levels. The lowest setting is mute.

The system features a memory function, retaining your selected melody and volume settings even after a power outage.

Set Different Ringtones For Each Button



Image: A family interacting with their dog and the doorbell, illustrating how different ringtones can be assigned to multiple buttons.

Using the Transmitter Button

The transmitter button features a 1.6-inch touch surface, making it easy for dogs of all sizes to activate with a gentle touch of their paw or nose.

1.6in Touch Surface 20% Larger!

Easier for all dogs to press with gentle touches.



Image: A detailed view of the doorbell button, emphasizing its large, easy-to-press touch surface.

POTTY TRAINING GUIDE

Consistent training is key to success. Here's a guide to help your dog learn to use the doorbell:

1. **Step 1: Introduce the Doorbell.** Let your dog explore the bell. Treat and reward any interest. Ensure they are comfortable with the sound.
2. **Step 2: Teach to Touch.** Cut treats into small pieces. When your dog touches the bell, say "Touch!", then "Yes!" and reward with a treat.
3. **Step 3: Teach When to Ring.** Ask your dog to touch the bell before opening the door. Say "Yes!" and treat. Repeat every time you go out. Treat them again after they potty outside.
4. **Step 4: Be Patient.** If your dog rings the bell to play, take them out. If they potty, praise and treat. If not, go back inside. They'll learn the bell means potty time!

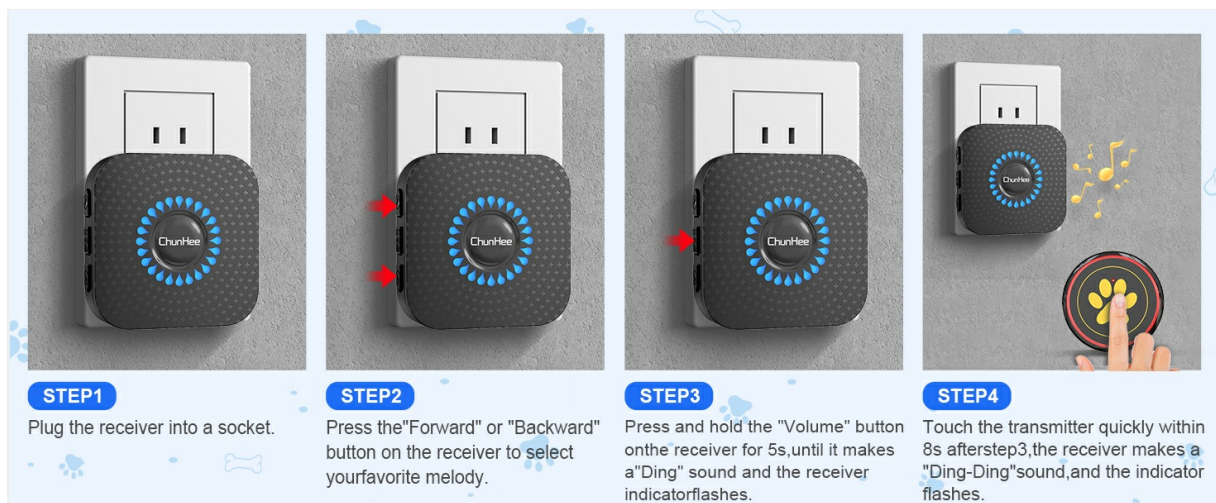


Image: A visual representation of the four key steps in training your dog to use the doorbell for potty breaks. This training method helps reduce unwanted behaviors like scratching, barking, or whining at the door, providing a clear communication channel.



Image: Contrasting a dog successfully using the doorbell with undesirable behaviors like scratching doors or urinating indoors.

Official Product Video: The Cutest Dog Potty Training Doorbell

Your browser does not support the video tag.

Video: This short video demonstrates the ChunHee Wireless Dog Doorbell in action, showing a dog using the button to signal its need to go outside for potty breaks. It highlights the ease of use and the clear communication it provides.

MAINTENANCE

To ensure the longevity and proper function of your ChunHee Wireless Dog Doorbell, follow these maintenance guidelines:

- **Cleaning:** Wipe the receiver and transmitter buttons with a soft, dry cloth. Avoid using harsh chemicals or abrasive cleaners.
- **Battery Replacement:** The transmitter button uses a CR2430 battery, which typically lasts 2-3 years or up to 80,000 presses. When the button's indicator light no longer flashes or the signal becomes unreliable, it's time to replace the battery. To replace, carefully open the button casing, remove the old battery, and insert a new CR2430 battery with the positive (+) side facing up.
- **Waterproof Design:** The transmitter button has an IP55 waterproof rating, making it suitable for

outdoor use. However, avoid submerging it in water.

**Up to 80,000 times,
2-3 years of life**

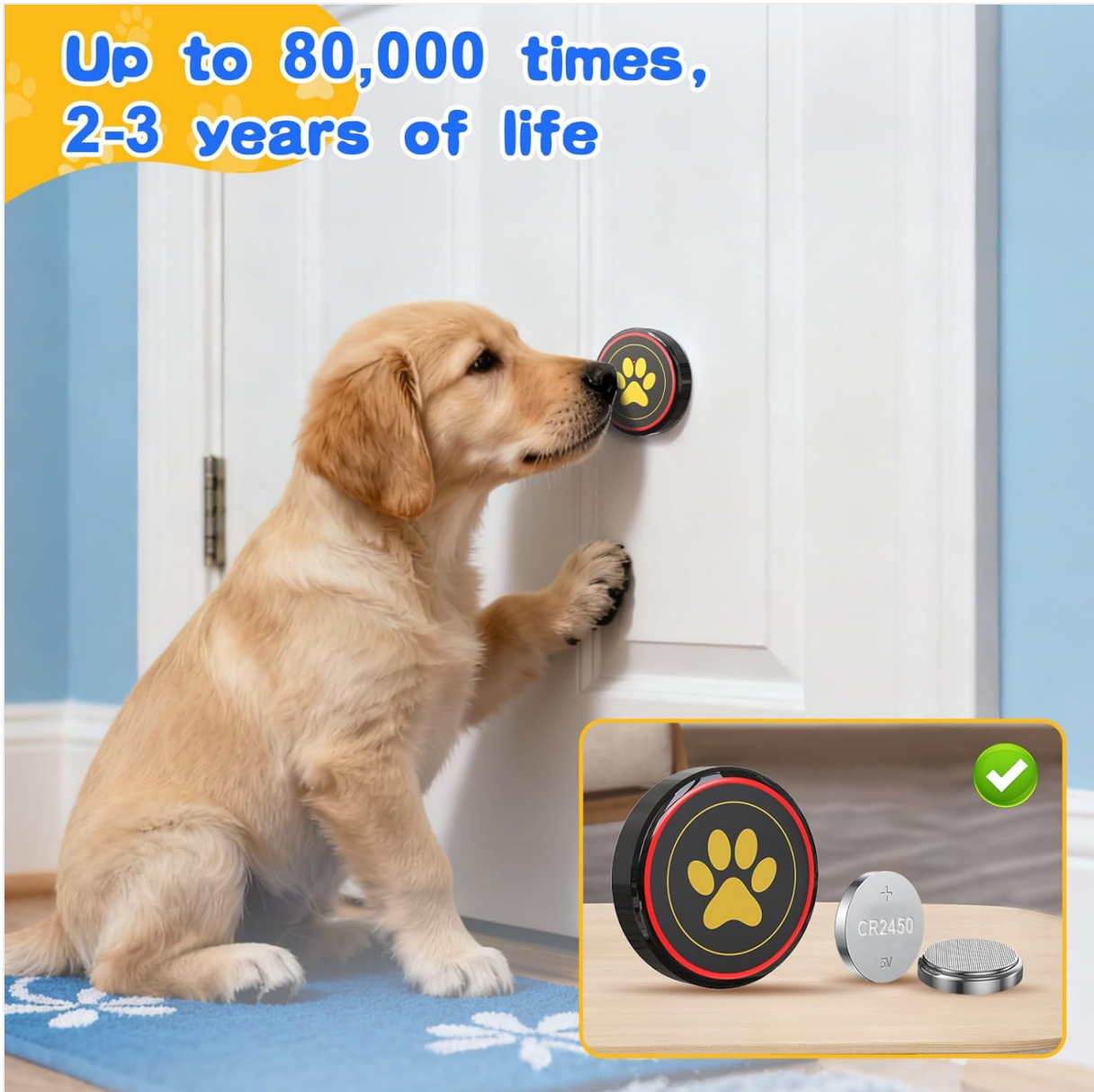


Image: A visual representation of the doorbell button's battery life and the type of battery (CR2450, though the product specs state CR2430, this image is the closest match) required for replacement.

TROUBLESHOOTING

Problem	Possible Cause	Solution
Receiver does not chime.	Receiver unplugged; low battery in transmitter; out of range; not paired.	Ensure receiver is plugged in. Replace transmitter battery. Move receiver closer to transmitter. Re-pair transmitter and receiver (see Setup Instructions).
Short operating range.	Obstructions (thick walls, metal objects); interference from other devices.	Relocate receiver or transmitter to minimize obstructions. Avoid placing near large metal objects or other wireless devices.
False alarms.	Button pressed accidentally; dog playing with button.	Ensure button is mounted securely. Continue training to teach dog appropriate use.

SPECIFICATIONS

Feature	Detail
Model Name	Chunhee
Color	Black-2 Button & 2 Receiver
Material	Plastic
Item Weight	8.8 ounces
Transmitter Battery	1 x CR2430 (included)
Waterproof Rating	IP55 (Transmitter Button)
Ringtones	55 options
Volume Levels	5 levels (0-110 dB)
Touch Area Size	1.6 inches (diameter)

WARRANTY AND SUPPORT

ChunHee products are designed for reliability and performance. For specific warranty details, please refer to the product packaging or contact ChunHee customer support directly. If you encounter any issues or have questions regarding your Wireless Dog Doorbell, please reach out to our support team for assistance.

Contact Information: Please visit the official ChunHee website or your retailer's support page for the most up-to-date contact details.