



Manuals.plus /

› wavytalk /

› Wavytalk Steam Sesh Hair Straightener Instruction Manual

wavytalk Steam Sesh

Wavytalk Steam Sesh Hair Straightener Instruction Manual

Model: Steam Sesh

1. INTRODUCTION

Thank you for choosing the Wavytalk Steam Sesh Hair Straightener. This innovative styling tool utilizes Hydro-Infusion steam technology and Nano Titanium plates to provide efficient and gentle hair straightening, reducing damage and enhancing shine. Please read this manual thoroughly before use to ensure safe and optimal performance.

STEAM SESH

Fewer passes,
less damage,
smoother results



Figure 1: Wavytalk Steam Sesh Hair Straightener in Sakura Pink.

2. IMPORTANT SAFETY INFORMATION

WARNING: To reduce the risk of burns, electrocution, fire, or injury to persons:

- **Burn Hazard:** Surfaces get extremely hot during use. Avoid direct contact with skin.
- **Electric Shock Risk:** Keep away from water. Do not use near bathtubs, sinks, or other water sources.
- **Fire Risk:** Unplug when not in use. Do not leave unattended when plugged in.
- Keep out of reach of children.

3. PRODUCT OVERVIEW AND FEATURES

The Wavytalk Steam Sesh is designed for versatile styling with enhanced hair health benefits. Key

features include:

- **One-Pass Steam Straightening:** Hydro-Infusion technology transforms water into a fine, heated mist for deep hydration, resulting in silky, frizz-free hair in a single glide.
- **3-in-1 Styling Tool:** Capable of straightening, creating loose curls, and nourishing hair.
- **Detachable Comb:** A built-in comb attachment helps detangle hair during styling, ensuring even straightening and reducing tugging. It can be removed for a sleeker pass.
- **All-Day Humidity-Resistant Hold:** Steam technology helps lock in straight styles, maintaining sleekness and frizz-free results even in humid conditions.
- **Nano Titanium Plates:** Wide 1.38-inch plates heat evenly and glide smoothly through hair, suitable for thick or textured hair.
- **5 Temperature Settings:** Adjustable heat from 300°F to 450°F (150°C to 230°C) with an LED screen for precise control, catering to various hair types and textures.

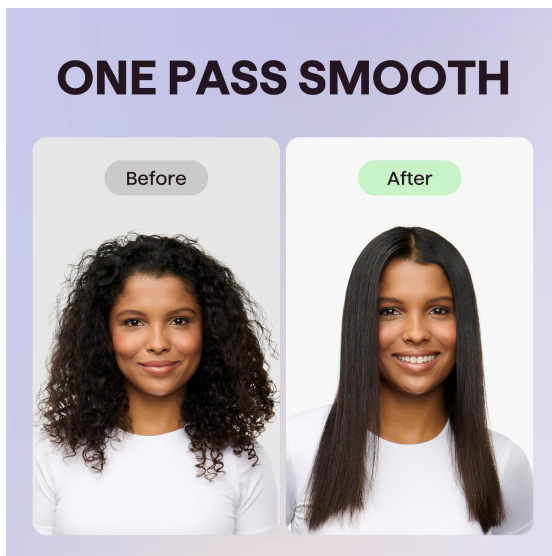


Figure 2: Before and after results of using the straightener.

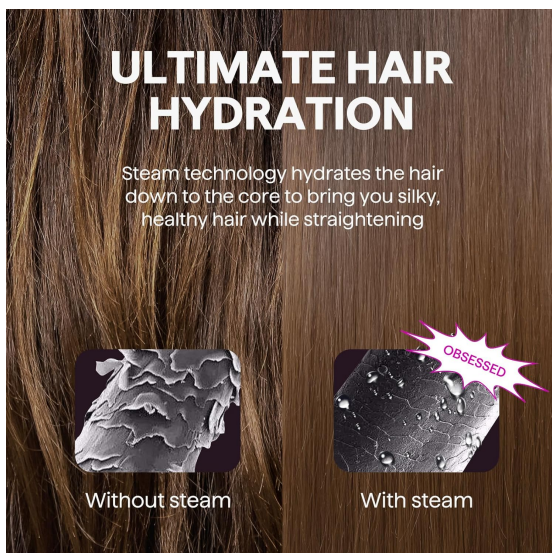


Figure 3: Visual comparison of hair hydration with and without steam.

HYDRO-INFUSION TECH

Transforms water into mist that deeply hydrates each strand while styling



Figure 4: Hydro-Infusion Technology in action.

NANO TITANIUM PLATES

Even heat, smooth glide

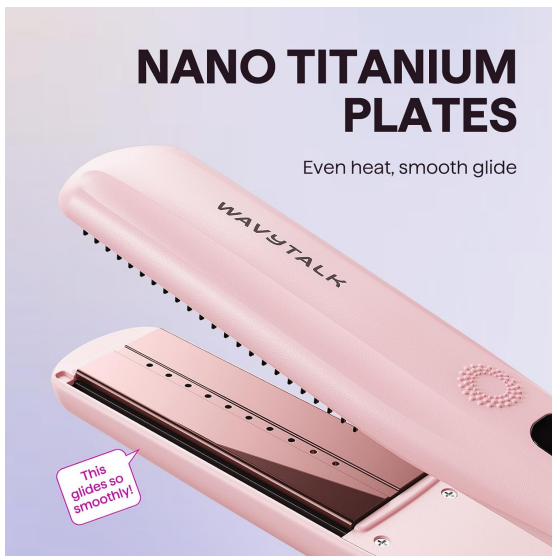


Figure 5: Nano Titanium plates for smooth gliding.

4. SETUP INSTRUCTIONS

Before first use, ensure all packaging materials are removed. Follow these steps to prepare your straightener:

1. Fill the Water Tank:

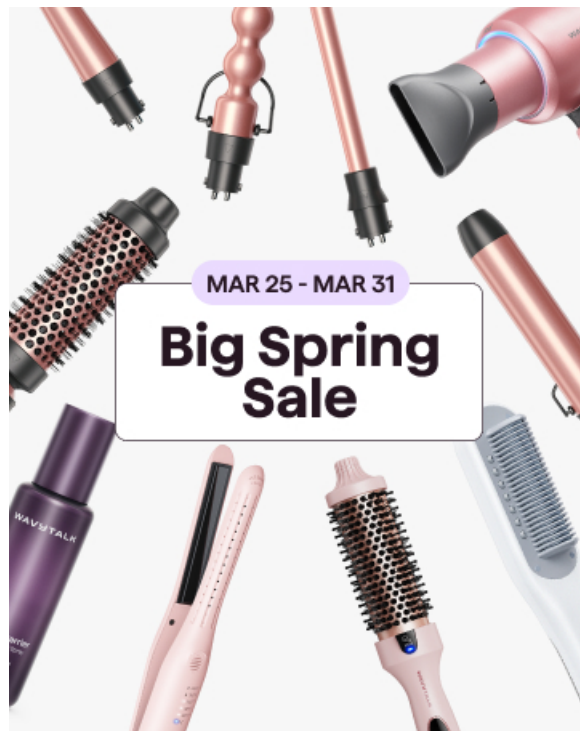


Figure 6: Removing the water tank.

Press the release button and pull out the water tank. Remove the rubber stopper and use the provided dropper to fill the tank with purified or distilled water. Reinsert the rubber stopper securely.



Figure 7: Filling the water tank with water.

Reinsert the water tank into the straightener until it clicks into place.

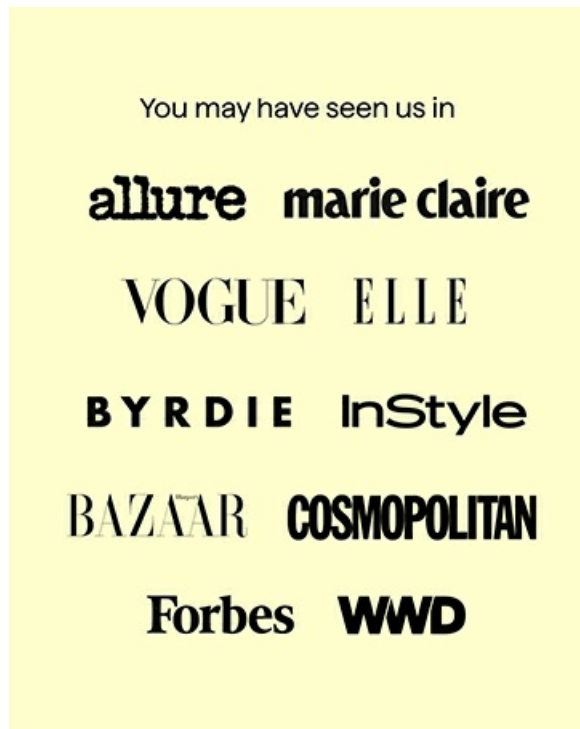


Figure 8: Reinserting the water tank.

2. **Attach the Detachable Comb (Optional):**

The comb attachment helps guide hair for smoother styling. To attach, align the comb with the button-side groove on the straightener and slide it until fully seated.



Figure 9: Attaching the comb attachment.

Usage Tip: Keep the comb side facing down for smooth styling. Facing up may pull and snag hair.

5. OPERATING INSTRUCTIONS

1. **Power On and Set Temperature:** Plug the straightener into a suitable power outlet. Turn on the

device and use the temperature controls to select your desired heat setting (300°F to 450°F). The LED screen will display the temperature.

2. **Activate Steam Function:** Once the desired temperature is reached, press the steam button to activate the steam function.



Figure 10: Activating the steam function.

3. **Temperature Guide:**

5 TEMP SETTINGS

LED display for precision styling



300°F (150°C)
for fine or fragile hair



340°F (170°C)
for medium or straight hair



370°F (190°C)
for wavy or loose curls



410°F (210°C)
for thick or textured hair



450°F (230°C)
for very coarse or natural curls



Figure 11: Recommended temperature settings for various hair types.

- 4. Styling Your Hair:** Ensure your hair is clean and dry before styling. Section your hair into manageable portions. Take a small section of hair and place it between the plates, close to the roots. Gently glide the straightener down the hair shaft in a single, smooth motion. Repeat as necessary for desired results.
- 5. After Use:** Turn off the straightener and unplug it from the power outlet. Allow the device to cool completely before storing.

Official Product Video: Wavytalk Steam Straightener

Your browser does not support the video tag.

Video 1: This video demonstrates the effectiveness of the Wavytalk Steam Straightener in achieving smooth, straight hair with steam technology.

6. MAINTENANCE

Regular cleaning ensures the longevity and optimal performance of your Wavytalk Steam Sesh Hair Straightener.

- Always ensure the device is unplugged and completely cool before cleaning.

- Wipe the plates and exterior with a soft, damp cloth. Do not use abrasive cleaners or harsh chemicals.
- Empty any remaining water from the tank after each use to prevent mineral buildup.
- If the detachable comb becomes clogged with hair, carefully remove it and clean the bristles.

7. TROUBLESHOOTING

If you encounter any issues with your Wavytalk Steam Sesh, please refer to the following common solutions:

- **No Power:** Ensure the straightener is securely plugged into a working electrical outlet. Check the power cord for any damage.
- **No Steam:** Verify that the water tank is filled with purified or distilled water and correctly inserted. Ensure the steam function is activated. Allow a few moments for the steam to generate after activation.
- **Hair Snagging:** Ensure the detachable comb is facing downwards. If not using the comb, ensure hair sections are small and free of tangles.
- **Device Not Heating:** Confirm the power is on and the temperature setting is selected. Allow adequate time for the plates to reach the set temperature.

If problems persist, please contact Wavytalk customer support.

8. SPECIFICATIONS

Feature	Detail
Product Dimensions	12 x 1.7 x 1.7 inches
Item Weight	1.1 Pounds (0.5 Kilograms)
Color	Sakura Pink
Material Type	Nano Titanium
Heater Surface Material	Nano Titanium
Power Source	Corded Electric
Max Temperature Setting	450 Degrees Fahrenheit
Hair Type Compatibility	All
Resulting Hair Type	Straight

9. WARRANTY AND SUPPORT

For warranty information and customer support, please refer to the documentation included with your product or visit the official Wavytalk website. Extended protection plans may also be available for purchase.