



[Manuals.plus](#) /

› [VOOPEAK](#) /

› [VOOPEAK TC36 4G LTE Cellular Trail Camera Instruction Manual](#)

## VOOPEAK TC36

# VOOPEAK TC36 4G LTE Cellular Trail Camera Instruction Manual

Model: TC36

[Introduction](#)   [Safety Information](#)   [Package Contents](#)   [Product Overview](#)   [Setup](#)   [Operating](#)  
[Instructions](#)   [Maintenance](#)   [Troubleshooting](#)   [Specifications](#)   [Warranty & Support](#)

## 1. INTRODUCTION

Thank you for choosing the VOOPEAK TC36 4G LTE Cellular Trail Camera. This manual provides detailed instructions for setting up, operating, and maintaining your camera to ensure optimal performance. The TC36 is designed for outdoor monitoring, featuring 4G LTE connectivity, 2.5K QHD live streaming, night vision, and motion-activated recording, powered by a built-in battery and solar panel.



*Image: VOOPEAK TC36 4G LTE Cellular Trail Camera, showcasing its compact design and camouflage pattern.*

## 2. SAFETY INFORMATION

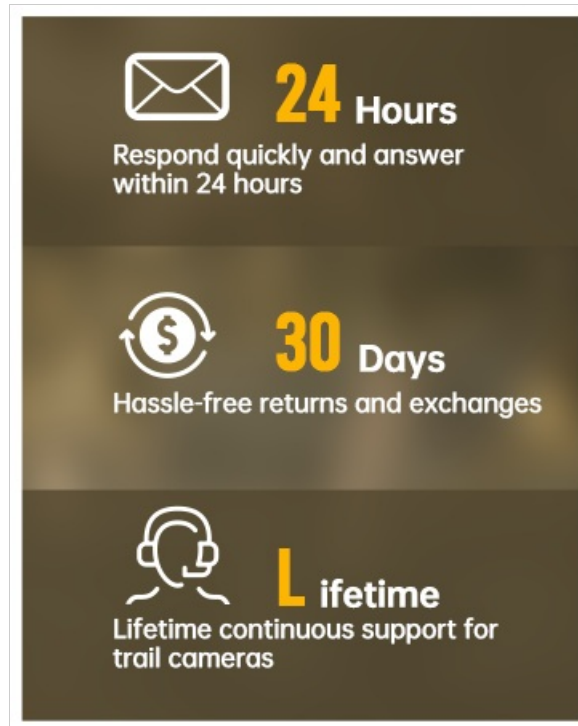
- Read all instructions carefully before using the device.
- Do not expose the camera to extreme temperatures or direct sunlight for prolonged periods without proper ventilation.
- Ensure all ports and covers are securely closed to maintain the IP66 waterproof rating.
- Use only VOOPEAK-approved accessories and power sources.
- Keep the device out of reach of children.
- Dispose of batteries and electronic components responsibly according to local regulations.

## 3. PACKAGE CONTENTS

Verify that all items are present in your package:

- VOOPEAK TC36 Cellular Trail Camera (quantity as per pack)

- Solar Panel
- Mounting Strap
- USB Charging Cable
- Mounting Bracket/Screws
- User Manual

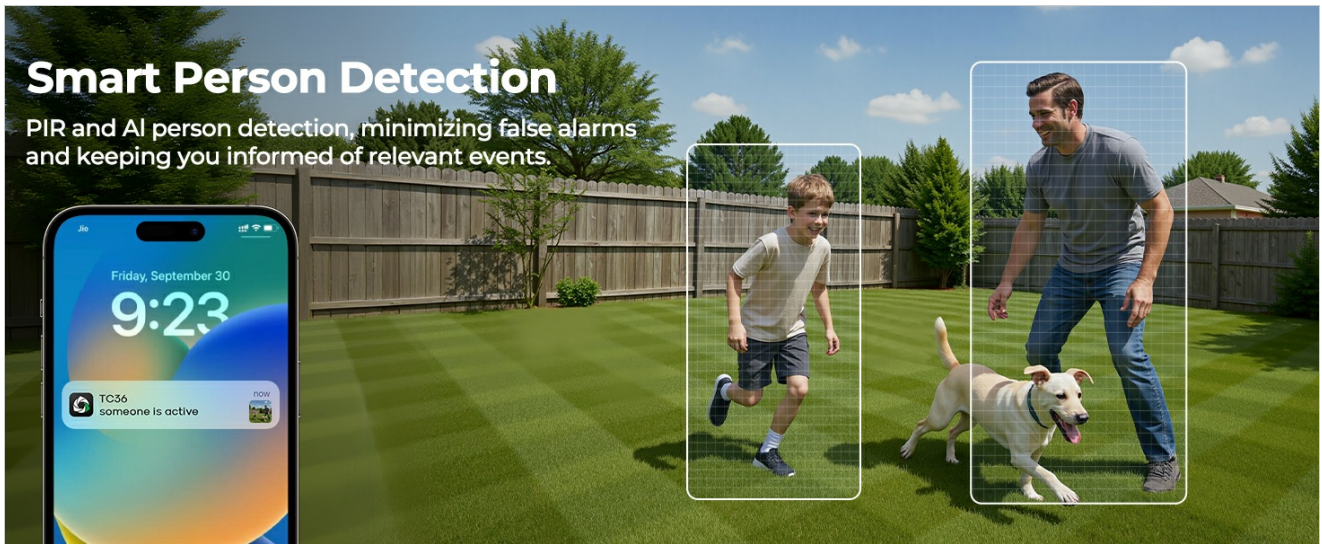


*Image: Contents of the VOOPEAK TC36 package, including the camera, solar panel, and accessories.*

## 4. PRODUCT OVERVIEW

The VOOPEAK TC36 is a robust 4G LTE cellular trail camera designed for reliable outdoor surveillance. Key features include:

- **Built-in 4G SIM Card:** Operates without Wi-Fi, utilizing a built-in SIM card for connectivity (US only). New users receive 100MB trial data for 7 days. Data plan subscription required after trial.
- **2.5K QHD Live Feed:** Provides high-definition video streaming day and night.
- **940nm Low-Light Infrared Night Vision:** Captures clear night images without disturbing wildlife.
- **Smart PIR Detection & 0.1S Trigger:** Rapidly detects human or animal activity within 65 feet and triggers recording.
- **4 Area in 1 Screen:** View real-time images from up to four cameras simultaneously via the CloudEye 365 app.
- **Detection and Privacy Area Settings:** Customize detection zones and block out private areas for enhanced control.
- **10x Digital Zoom:** Adjust focal length via the mobile app to enlarge distant images.
- **365 Days Non-Stop Power:** Equipped with a 4W solar panel and a built-in 7800mAh lithium battery for continuous power.
- **IP66 Waterproof:** Durable housing designed to withstand various weather conditions.



*Image: Overview of the VOOPEAK TC36 4G LTE Cellular Trail Camera highlighting its key features.*

## 5. SETUP

---

### 5.1 Initial Charging

Before first use, fully charge the camera's built-in 7800mAh battery using the provided USB cable. Connect the USB cable to the camera and a standard USB power adapter (not included).

### 5.2 SIM Card Activation (Built-in)

The TC36 features a built-in 4G SIM card. New users receive 100MB trial data for 7 days. After the trial, a data plan subscription is required for continued cellular functionality. The built-in SIM card is non-removable and for use in the United States only.



Image: VOOPEAK TC36 camera connected to its solar panel, illustrating the 365-day non-stop power feature.

### 5.3 Mounting the Camera and Solar Panel

1. Attach the camera to a tree or pole using the provided mounting strap. Ensure it is securely fastened and positioned to capture the desired area.
2. Mount the solar panel in a location that receives ample direct sunlight throughout the day. Use the provided mounting bracket and screws.
3. Connect the solar panel cable to the camera's charging port. This will provide continuous power to the camera.



*Image: Close-up of the solar panel connected to the VOOPEAK TC36 camera, illustrating the power connection.*

### 5.4 App Installation and Connection

1. Download the **CloudEye 365** app from your smartphone's app store.
2. Open the app and follow the on-screen instructions to create an account or log in.
3. Add your TC36 camera to the app by scanning the QR code located on the camera or by manually entering its ID.
4. Ensure the camera is powered on and has a stable 4G connection for successful pairing.

Your browser does not support the video tag.

*Video: Instructions on how to connect the VOOPEAK TC36 camera to the CloudEye 365 mobile application.*

## 6. OPERATING INSTRUCTIONS

---

### 6.1 Live Streaming and Recording

Once connected to the CloudEye 365 app, you can access the camera's live feed. The 2.5K QHD resolution provides clear visuals. The camera automatically records when motion is detected.

# 2.5K Crystal-Clear Live Video View

See Every Clear Detail Day & Night



*Image: A deer captured by the VOOPEAK TC36 camera, demonstrating the 2.5K QHD live feed capability.*

## 6.2 Motion Detection and Notifications

The camera features Smart PIR Detection with a 0.1-second trigger time. When motion is detected, the app will send real-time notifications to your smartphone.

# Real-Time Notifications

The camera detects motion will pop-up an APP message anytime, anywhere.



Image: A smartphone displaying a real-time notification from the VOOPEAK TC36 camera after detecting activity.

# 0.1S Trigger Time

Never miss a fast-moving moment



*Image: A cheetah in motion, illustrating the VOOPEAK TC36's rapid 0.1-second trigger time for capturing fast-moving subjects.*

## 6.3 Multi-Camera View (4 Area in 1 Screen)

The CloudEye 365 app allows you to monitor up to four cameras simultaneously on a single screen, simplifying multi-point surveillance.

# 4 Area in 1 Screen

Multiple devices can be added to watch real-time images at the same time



*Image: A smartphone displaying live feeds from four different VOOPEAK TC36 cameras simultaneously on one screen.*

## 6.4 Detection and Privacy Area Settings

Within the app, you can define specific detection areas to focus on critical zones and set privacy areas to block out sensitive regions from recording.



*Image: Screenshot of the CloudEye 365 app interface showing options for setting detection and privacy areas.*

## 6.5 10x Digital Zoom

Use the mobile app to digitally zoom up to 10x on live or recorded footage, allowing for closer inspection of details.

## 7. MAINTENANCE

- **Cleaning:** Regularly wipe the camera lens and solar panel with a soft, dry cloth to ensure clear images and efficient charging.
- **Battery:** The built-in 7800mAh battery is designed for long-term use with the solar panel. If the camera is stored for extended periods, ensure it is fully charged before storage and recharged every few months to maintain battery health.
- **Firmware Updates:** Check the CloudEye 365 app periodically for any available firmware updates to ensure optimal performance and new features.

# IP66 Waterproof

All Weather Protection, Rugged housing, Easy to mount



Image: VOOPEAK TC36 camera in a rainy environment, highlighting its IP66 waterproof and rugged design.

## 8. TROUBLESHOOTING

- **No Power:** Ensure the camera is fully charged or the solar panel is receiving adequate sunlight and properly connected. Check the USB cable for damage.
- **No 4G Connection:** Verify that the camera is within a 4G LTE coverage area (US only). Check your data plan status via the app. Restart the camera.
- **No Notifications:** Ensure motion detection is enabled in the app settings. Check your phone's notification settings for the CloudEye 365 app.
- **Unclear Images/Videos:** Clean the camera lens. Ensure there are no obstructions in front of the lens. Check lighting conditions.
- **App Connection Issues:** Ensure your smartphone has a stable internet connection. Restart the app and the camera.

## 9. SPECIFICATIONS

| Feature                  | Detail  |
|--------------------------|---|
| Model Name               | TC36 4G cellular trail camera                   |
| Connectivity Technology  | Wireless, Cellular                              |
| Special Feature          | Night Vision                                    |
| Indoor/Outdoor Usage     | Outdoor   |
| Compatible Devices       | Smartphone                                      |
| Mount Type               | Tree Mount                                      |
| Color                    | Green (Camouflage)                              |
| Power Source             | Battery Powered (Built-in 7800mAh), Solar Panel |
| Video Capture Format     | MP4   |
| Video Capture Resolution | 2.7K (2.5K QHD Live Feed)                       |
| Viewing Angle            | 120 Degrees                                     |
| Night Vision Range       | 65 Feet   |
| Item Dimensions          | 10 x 2 x 2.7 inches                             |
| Waterproof Rating        | IP66  |

## 10. WARRANTY & SUPPORT

VOOPEAK is committed to providing high-quality products and professional service. For warranty information, technical support, or any inquiries, please refer to the contact information provided in your product packaging or visit the official VOOPEAK website.

- **Customer Service:** Expect quick responses within 24 hours.
- **Returns & Exchanges:** Hassle-free returns and exchanges within 30 days.
- **Lifetime Support:** Continuous support for your trail camera.