

Manuals+

[Q & A](#) | [Deep Search](#) | [Upload](#)

manuals.plus /

› [Casfuy](#) /

› [Casfuy PWS-154 & PWS-133 Cat Water Fountain Replacement Filters & Sponges Instruction Manual](#)

Casfuy PWS-154, PWS-133

Casfuy PWS-154 & PWS-133 Cat Water Fountain Replacement Filters & Sponges Instruction Manual

INTRODUCTION

This manual provides instructions for the proper use and maintenance of Casfuy PWS-154 and PWS-133 Cat Water Fountain Replacement Filters and Sponges. These filters are designed to ensure your pet's water fountain provides clean and fresh drinking water.

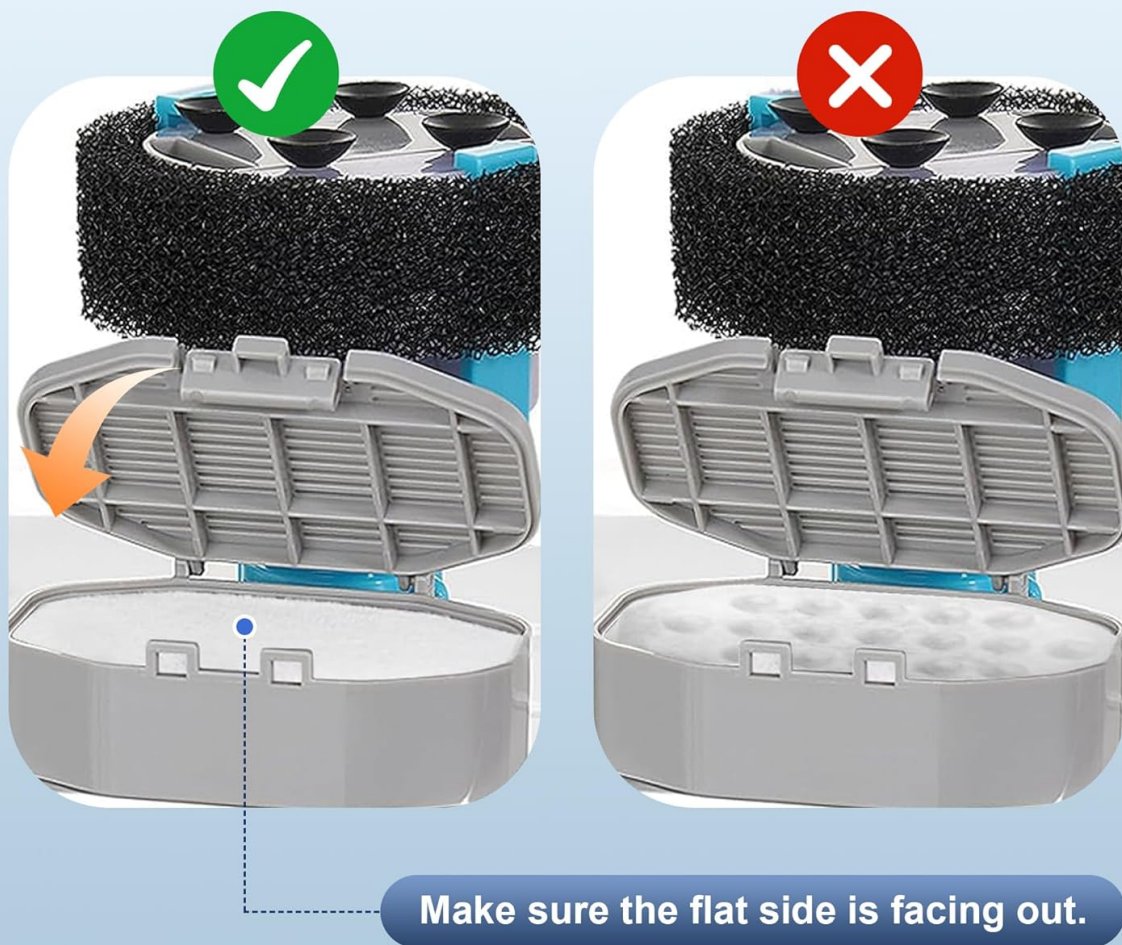
SETUP INSTRUCTIONS

1. **Rinse Filters:** Before initial use, thoroughly rinse the carbon filter and pre-filter sponge under running tap water. This step helps remove any loose carbon dust and prepares the filter for optimal performance.
2. **Install Filter:** Place the filter into the designated slot in your Casfuy cat water fountain. Ensure the flat side of the filter is facing outwards for proper fit and function.



Before initial use, thoroughly rinse the filter under running tap water. This step helps remove any loose carbon dust and prepares the filter for optimal performance.

Installation Instructions



This image demonstrates the correct way to install the filter. Ensure the flat side of the filter is facing outwards for proper fit and function. An incorrect installation example is also shown for clarity.

OPERATING INFORMATION

These replacement filters and sponges are compatible with Casfuy Quiet Stainless Steel Dog & Cat Water Fountains (PWS-154) and Casfuy T-Faucet Stainless Steel Dog & Cat Water Fountains (PWS-133). They are designed to provide a perfect fit and optimal performance within these specific models.

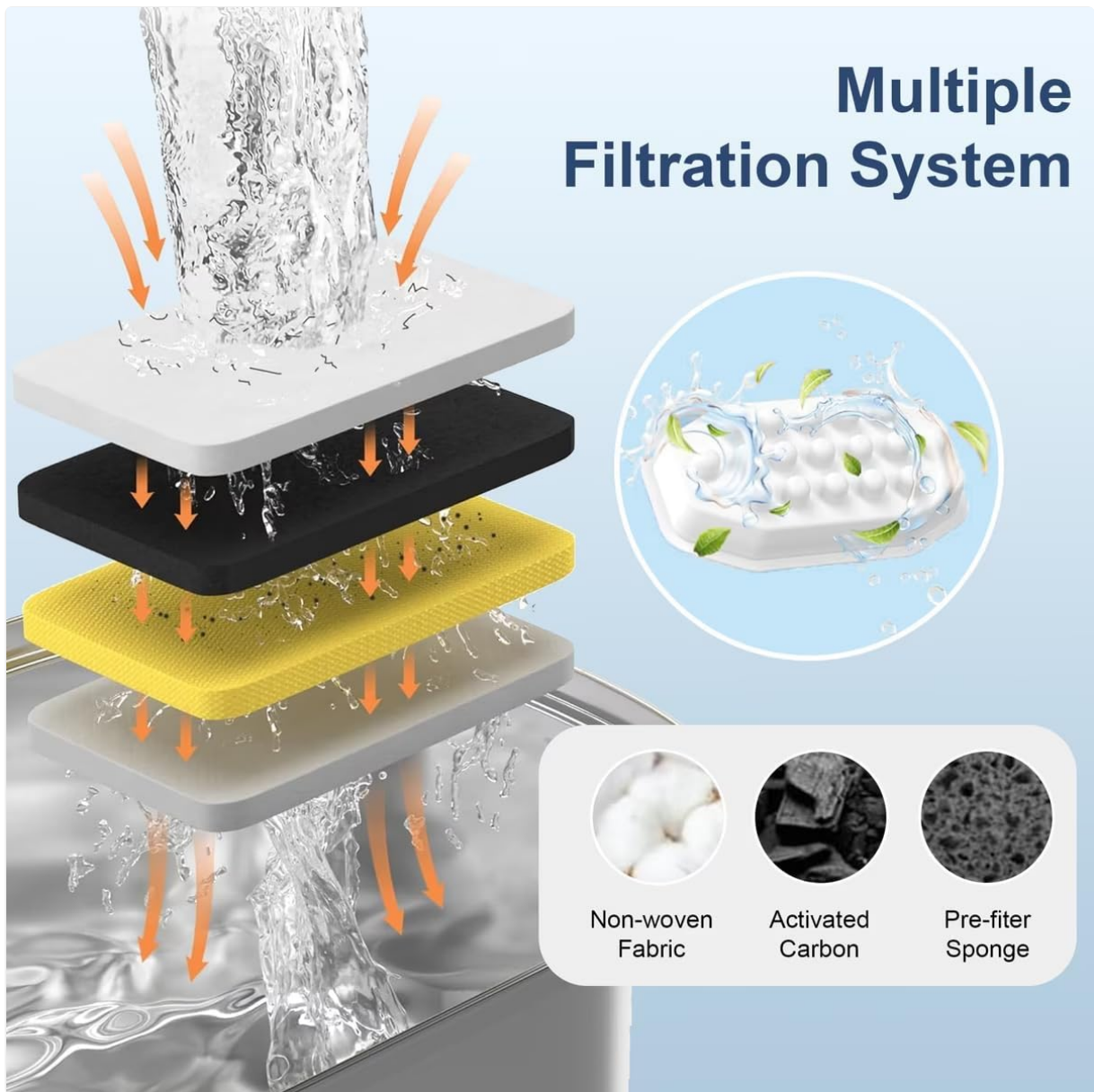
Compatible Perfectly with These Cat Fountains



This image displays the two Casfuy cat water fountain models (PWS-154 and PWS-133) that are compatible with these replacement filters and sponges. The filters are designed for a precise fit within these specific fountain models.

The multiple filtration system effectively removes debris, pet hair, and other particles from the water. It also softens the water and helps eliminate unpleasant tastes or odors, ensuring your pet has access to clean and fresh water.

Multiple Filtration System



This diagram illustrates the multi-stage filtration process. Water passes through a non-woven fabric layer, then an activated carbon layer, and finally a pre-filter sponge, effectively removing impurities.

MAINTENANCE

- **Regular Cleaning:** Clean the water fountain and rinse the filters thoroughly with each water change.
- **Filter Replacement:** For optimal water quality and to promote your pet's health, replace the carbon filter and pre-filter sponge every 2 to 4 weeks.

TROUBLESHOOTING

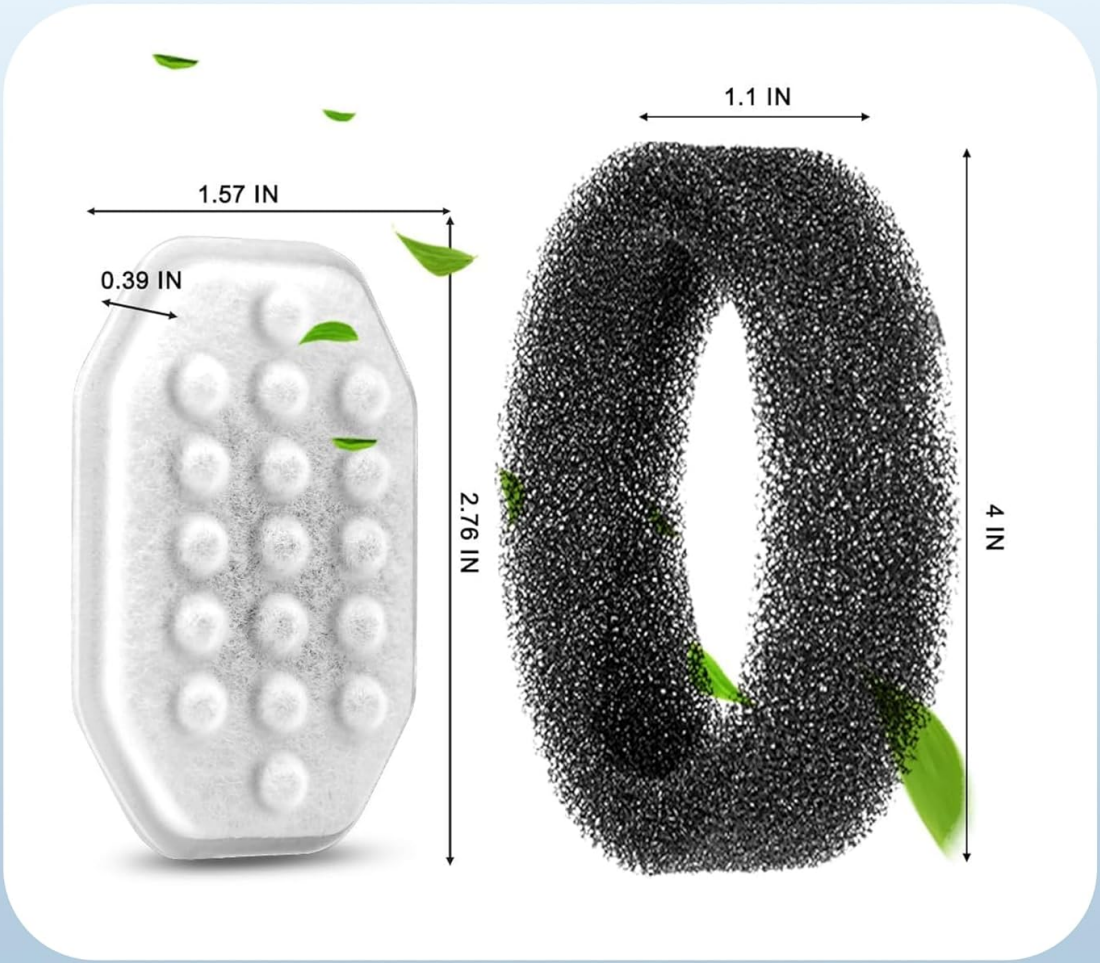
No specific troubleshooting steps are typically required for replacement filters and sponges. If you experience issues with water flow or quality after replacing the filters, please ensure the filters are installed correctly and that the fountain pump is clean and functioning properly. Refer to your Casfuy water fountain's instruction manual for fountain-specific troubleshooting.

SPECIFICATIONS

Brand	Casfuy
-------	--------

Model Numbers	PWS-133, PWS-154
Product Dimensions (Package)	10.5 x 10.5 x 9 cm
Item Weight (Package)	85 Grams
Material	Cotton, Polypropylene
UPC	769044609319
Contents	8 Carbon Filters, 8 Pre-filter Sponges (individually sealed)

Product Size



This image provides the approximate dimensions for both the replacement filter and the pre-filter sponge. The filter measures approximately 2.76 inches in length and 1.57 inches in width. The sponge measures approximately 4 inches in length and 1.1 inches in width.

WARRANTY INFORMATION

Specific warranty information for Casfuy PWS-154 & PWS-133 Cat Water Fountain Replacement Filters & Sponges is not provided in the product details. For warranty inquiries, please refer to the documentation included with your original Casfuy water fountain or contact Casfuy customer support directly.

CUSTOMER SUPPORT

For further assistance or questions regarding your Casfuy replacement filters and sponges, please visit the official Casfuy website or contact their customer service department. Contact information is typically available on the product packaging or the manufacturer's website.