

## Casfuy PWS-120, PWS-136, PWS-140, PWS-143, PWS-161

# Casfuy Pet Fountain Replacement Filters Instruction Manual

Models: PWS-120, PWS-136, PWS-140, PWS-143, PWS-161

## INTRODUCTION

---

This instruction manual provides essential information for the proper use and maintenance of your Casfuy Pet Fountain Replacement Filters. These filters are designed to ensure your pet receives clean and fresh drinking water, contributing to their overall health and well-being. Please read this manual thoroughly before installation and use.

## COMPATIBILITY

---

These replacement filters are perfectly compatible with the following Casfuy pet fountain models:

- Casfuy Stainless Steel Cat & Dog Water Fountain with Copper Swan Neck Faucet
- Casfuy Water Level Window Stainless Steel Dog Water Fountain
- Casfuy Circular Water Level Window Stainless Steel Dog & Cat Water Fountain
- Casfuy Ultra Quiet Stainless Steel Dog & Cat Water Fountain with Oversized Water Window

# Install the Filters

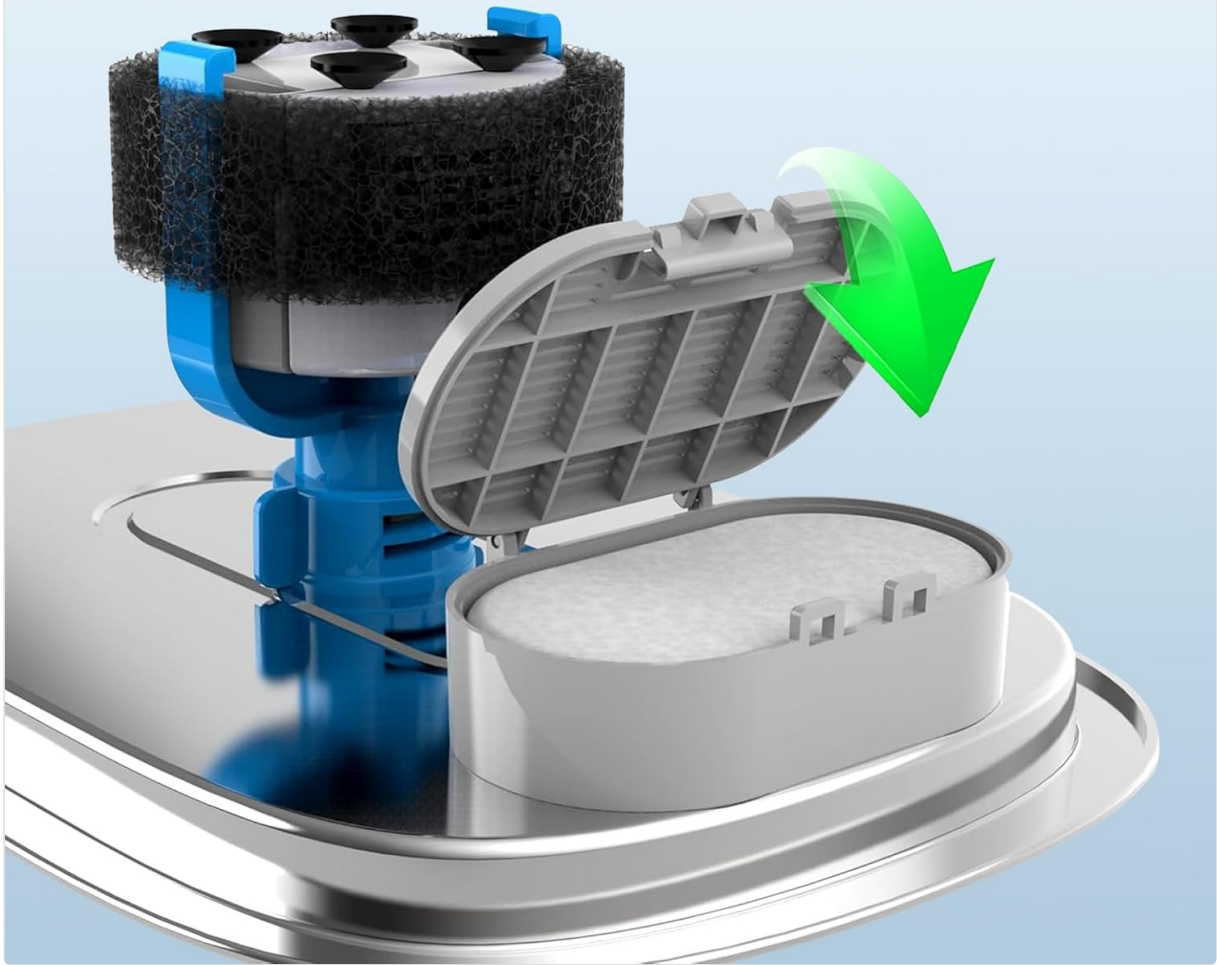


Image: Various Casfuy pet fountain models compatible with these replacement filters.

## PRODUCT FEATURES

The Casfuy Pet Fountain Replacement Filters feature an enhanced filtration system designed to provide clean and healthy water for your pets. Each filter includes:

- **Cotton Layer:** Catches hair and debris.
- **Coconut Shell Activated Carbon:** Removes odors, impurities, and improves water taste.
- **Sponge Filter:** Protects the pump from hair and dirt, extending its lifespan.



Image: Detailed view of the 4-layered filtration system.

## INSTALLATION INSTRUCTIONS

---

1. **Rinse Filters:** Before first use, thoroughly rinse the new filter and sponge filter under running water for at least 5 minutes. This helps remove any loose carbon dust and prepares the filter for optimal performance.
2. **Disassemble Fountain:** Turn off and unplug your pet fountain. Disassemble the top tray and filter housing according to your specific fountain model's instructions.
3. **Remove Old Filters:** Carefully remove the used filter and sponge filter. Dispose of them properly.
4. **Install New Sponge Filter:** Place the new sponge filter around the pump intake.
5. **Install New Carbon Filter:** Insert the new carbon filter into the designated filter tray or housing. Ensure it is seated correctly.
6. **Reassemble Fountain:** Reassemble the fountain components, ensuring all parts are securely in place.
7. **Refill Water:** Fill the fountain with fresh water to the appropriate level.
8. **Plug In:** Plug in the fountain and ensure it is operating correctly.

# 4 Layered Filtration

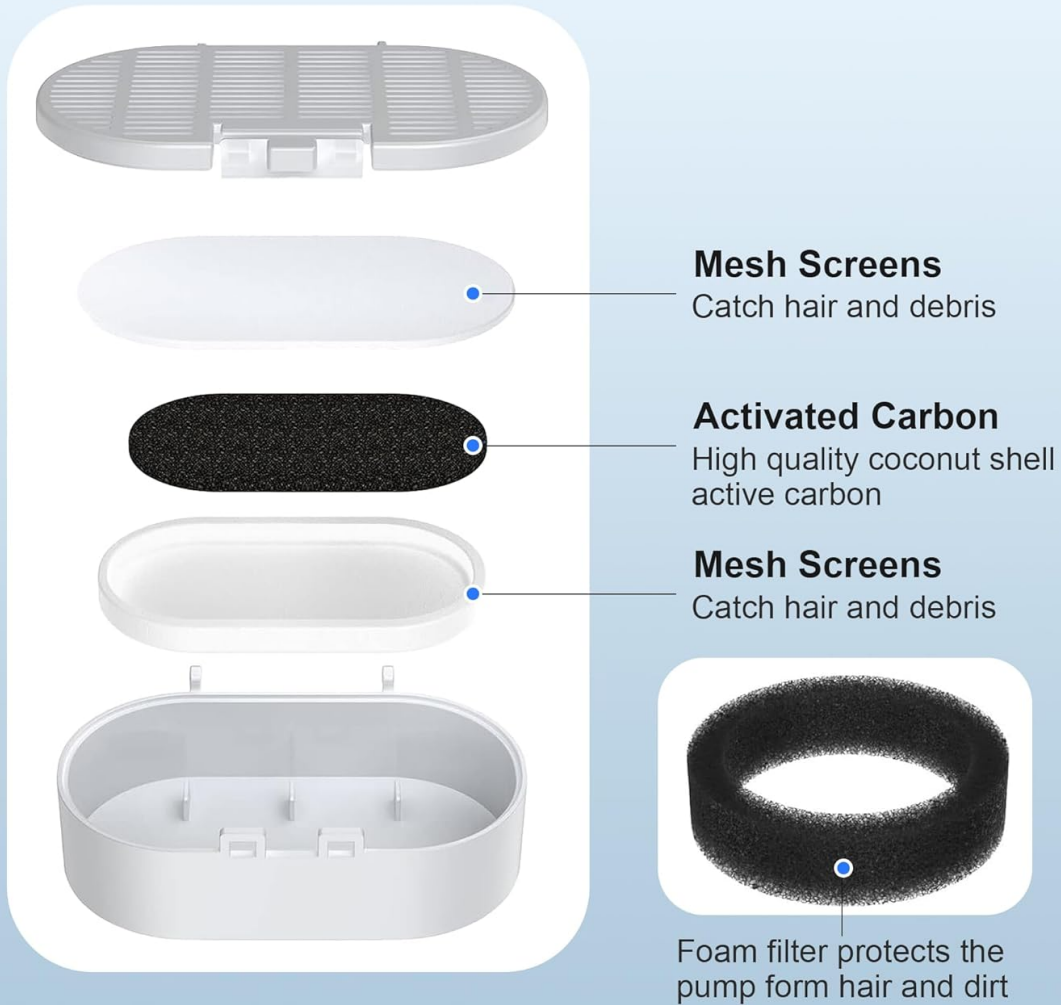


Image: Step-by-step visual guide for installing the filter.



Image: Rinsing the filter before use.

## MAINTENANCE

---

Regular maintenance of your pet fountain filters is crucial for ensuring clean water and the longevity of your fountain. Follow these guidelines:

- **Filter Replacement:** Replace the carbon filter and sponge filter every 2 to 4 weeks. The exact frequency depends on the number of pets using the fountain, water quality, and your pet's drinking habits. More frequent replacement may be necessary for multiple pets or in areas with hard water.
- **Fountain Cleaning:** Clean the entire pet fountain, including the pump, at least once a week to prevent mineral buildup and bacterial growth.
- **Water Level:** Ensure the water level in the fountain is always sufficient to prevent the pump from running dry, which can damage it.

## TROUBLESHOOTING

---

If you encounter issues with your pet fountain's filtration, consider the following:

- **Reduced Water Flow:** Check if the filter is clogged with hair or debris. Replace the filter if necessary. Ensure the pump is clean and free of obstructions.
- **Unpleasant Odor/Taste:** This indicates the activated carbon in the filter is saturated. Replace the filter immediately. Ensure regular filter replacement as recommended.
- **Water Appears Dirty:** The filter may be past its effective lifespan or the fountain needs a thorough cleaning. Replace the filter and clean the fountain components.
- **Filter Not Fitting:** Double-check that you have the correct replacement filters for your specific Casfuy fountain model. Refer to the compatibility section.

## SPECIFICATIONS

---

<b>Brand</b>	Casfuy
<b>Compatible Models</b>	PWS-120, PWS-136, PWS-140, PWS-143, PWS-161
<b>Material</b>	Cotton, Coconut Shell Activated Carbon
<b>Product Dimensions (Filter)</b>	Approx. 2.99 x 1.69 inches (oval filter)
<b>Product Dimensions (Sponge)</b>	Approx. 2.99 x 2.29 inches (circular sponge)
<b>Included Components</b>	8 Filters, 8 Sponges
<b>UPC</b>	769044609531



Image: Product dimensions for the filter and sponge.

## **WARRANTY & SUPPORT**

---

Casfuy provides a **1-Year Warranty** for its products. For any questions, concerns, or warranty claims regarding your replacement filters or pet fountain, please contact Casfuy customer support through the retailer where you purchased the product or visit the official Casfuy website for contact information.