

TizzyToy MT11-GPS

TizzyToy MT11-GPS Drone User Manual

Model: MT11-GPS

INTRODUCTION

The TizzyToy MT11-GPS Drone is a versatile and user-friendly quadcopter designed for beginners, adults, and kids. Weighing less than 249g, it does not require FAA registration or Remote ID, making it convenient for travel and immediate use. This manual provides essential information for setting up, operating, and maintaining your drone to ensure a safe and enjoyable flight experience.



Figure 1: TizzyToy MT11-GPS Drone and included accessories.

SAFETY GUIDELINES

- **No FAA Registration Needed:** The drone weighs less than 249g, eliminating the need for FAA registration or Remote ID in most regions. Always check local regulations before flying.
- **Geo-Fencing:** Utilize the geo-fencing feature to maintain safe flight boundaries, especially when flying in new or restricted areas.
- **Pre-Flight Check:** Always ensure all components are correctly assembled and batteries are fully charged before each flight.
- **Environmental Awareness:** Avoid flying in strong winds (rated for Level 4 wind resistance, up to 17mph) or adverse weather conditions. Maintain visual line of sight with the drone.

PACKAGE CONTENTS

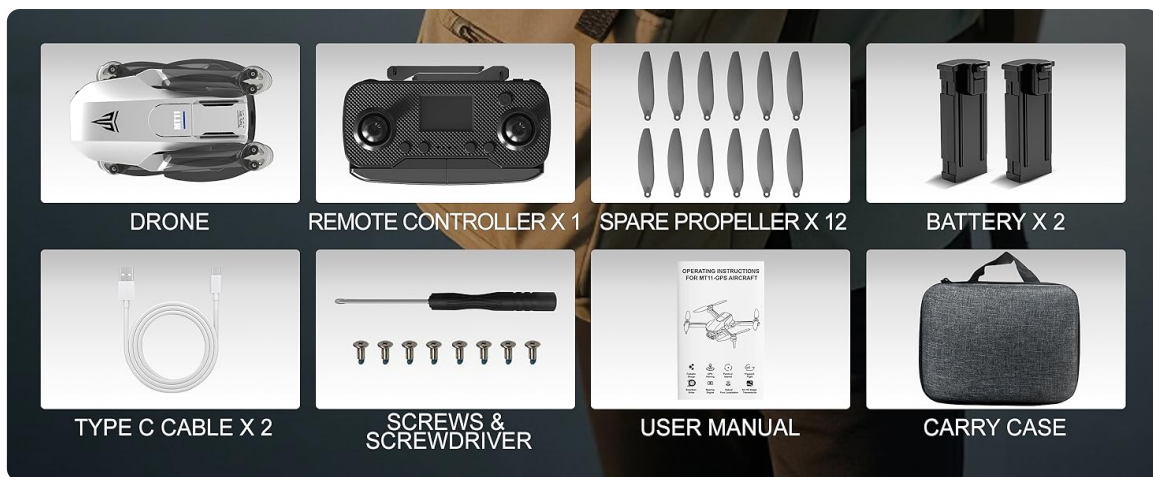


Figure 2: All items included in the TizzyToy MT11-GPS Drone package.

- TizzyToy MT11-GPS Drone
- Remote Controller (1)
- Spare Propellers (12)
- Rechargeable Batteries (2)
- Type C Charging Cables (2)
- Screws & Screwdriver
- User Manual
- Carry Case

SETUP

1. Drone Assembly

The MT11-GPS drone features a foldable design for portability. Gently unfold the drone arms until they lock into place. Ensure all propellers are securely attached. If replacing propellers, use the provided screwdriver and spare propellers, matching the A and B labels.

2. Battery Installation & Charging

Insert a fully charged battery into the drone's battery compartment until it clicks. The drone comes with two rechargeable batteries, each providing up to 20 minutes of flight time (40 minutes total). Use the provided Type C charging cables to charge the batteries. The smart auto power-off feature protects battery life by stopping charging once full.

3. Remote Control Setup

Unfold the phone holder on the remote control and securely place your smartphone. The remote control is also rechargeable via a Type C cable.

4. App Connection & Calibration

Download the dedicated drone application to your smartphone. Turn on both the drone and the remote control. Connect your smartphone to the drone's Wi-Fi network. Follow the in-app instructions for initial calibration (compass and gyroscope) before your first flight or in a new environment.

OPERATING INSTRUCTIONS

1. Basic Flight

- **Takeoff:** Use the one-key takeoff function or manually push the joysticks to initiate flight.
- **Hovering:** The drone's altitude hold feature ensures stable hovering, making it easy to control.
- **Landing:** Use the one-key landing function or manually descend the drone.
- **Headless Mode:** Simplifies flight control by eliminating the need to adjust the drone's orientation relative to the pilot.

2. Smart Flight Modes



Figure 3: Smart flight modes for enhanced aerial photography and videography.

- **Follow Me:** The drone automatically follows your movements, capturing hands-free footage.
- **Orbit Flight:** Perform cinematic 360° shots around a subject with the touch of a button.
- **Waypoint Flight:** Draw a flight path on the app, and the drone will automatically follow the designated route.

- **Gesture Control:** Use specific hand gestures to command the drone for photos or videos.

3. Camera Operation



Figure 4: Dual 2K QHD cameras with 90° adjustable lens for versatile shots.

- **Dual 2K QHD Cameras:** Capture sharp aerial photos and videos with the dual 2K cameras.
- **90° Adjustable Lens:** The shock-absorbing lens can be adjusted by 90° to capture various angles, from wide landscapes to detailed close-ups.
- **5G WiFi FPV Transmission:** Enjoy real-time, smooth, and lag-free video streaming directly to your smartphone.

4. Flight Range and Altitude



5GHz FPV Transmission

Clear view, minimal delay, every flight an experience.

1640 ft Range / **394** Altitude

Figure 5: Extended flight capabilities of the MT11-GPS Drone.

The drone offers a stable 5G transmission range of up to 1640 feet and can reach an altitude of 394 feet, allowing for extensive exploration and capturing distant scenes.

5. Auto Return-to-Home (RTH)

Travel as You Wish



*No exams or training are required in most countries and regions.
For safety, always check and comply with the latest local laws and regulations before flying.

Figure 6: GPS Auto Return-to-Home features for safe drone retrieval.

The built-in GPS ensures stable navigation. The drone will automatically return to its takeoff point in the event of low battery or signal loss, providing a worry-free flying experience.

MAINTENANCE

- **Battery Care:** Always ensure batteries are fully charged before use. The smart auto power-off feature helps protect battery life during charging.
- **Propeller Replacement:** In case of damage, use the provided spare propellers and screwdriver to replace them. Ensure correct propeller (A or B) is installed on the corresponding motor.
- **General Cleaning:** Keep the drone clean from dust and debris to ensure optimal performance.

TROUBLESHOOTING

If you encounter any issues, please refer to the detailed user manual included in the package. Common issues can often be resolved by:

- Ensuring batteries are fully charged for both drone and remote.
- Re-calibrating the drone via the app.
- Checking for any obstructions to propellers or cameras.
- Verifying a stable Wi-Fi connection between the drone and your smartphone.

SPECIFICATIONS

Feature	Detail
Brand	TizzyToy
Model Name	MT11-GPS
Item Weight	1.39 pounds (under 249g)
Video Capture Resolution	2.7K (QHD Dual Cameras)
Connectivity Technology	Wi-Fi (5G Transmission)
Control Type	App Control
Maximum Range	1640 Feet
Battery Cell Composition	Lithium Ion
Batteries Included	Yes (2 Lithium Ion batteries)
Optical Sensor Technology	Optical Flow

OFFICIAL PRODUCT VIDEOS

GPS Drone with Dual 2K QHD Cameras for Beginners

Your browser does not support the video tag.

Video demonstrating the TizzyToy MT11-GPS drone's features, including its dual 2K QHD cameras and ease of use for beginners.

Brushless Motor with WiFi FPV

Your browser does not support the video tag.

Video showcasing the drone's brushless motor for quiet and efficient flight, along with its WiFi FPV capabilities.



Drone review and demo





Your browser does not support the video tag.

A comprehensive review and demonstration of the TizzyToy MT11-GPS drone's features and flight performance.

For further assistance, please refer to the full user manual included in your package or contact TizzyToy customer support.

Related Documents - MT11-GPS

 <p>The image shows the cover of the Holy Stone HS710 drone user manual. It features the Holy Stone logo, the model name HS710, and the text 'Instructions For Use' and 'Gebrauchsanweisung'. There is also a small image of the drone and contact information for customer support.</p>	<p>Holy Stone HS710 Drone User Manual</p> <p>This user manual provides comprehensive instructions for operating the Holy Stone HS710 drone, including setup, safety guidelines, flight operations, and troubleshooting tips.</p>
 <p>The image shows the cover of the Holy Stone HS710 drone user manual. It features the Holy Stone logo, the model name HS710, and the text 'Instructions For Use' and 'Gebrauchsanweisung'. There is also a small image of the drone and contact information for customer support.</p>	<p>Holy Stone HS710 Drone: Instructions for Use and Safety Guidelines</p> <p>Comprehensive guide for the Holy Stone HS710 drone, covering setup, operation, safety, and maintenance. Learn how to fly your drone safely and effectively.</p>

 <p>The cover of the Holy Stone HS720G drone user manual. It features the Holy Stone logo, the text 'Instructions For Use' and 'Gebrauchsanweisung', and a small image of the drone. The age rating '16+' is visible in the top right corner.</p>	<p>Holy Stone HS720G Drone User Manual and Instructions</p> <p>Official user manual and instructions for the Holy Stone HS720G drone. Covers safety, setup, operation, and troubleshooting for users aged 16+.</p>
 <p>The cover of the GPS Smart Drone user manual. It features a 5G logo, a GPS icon, and a small image of the drone. The text 'GPS Smart Drone' is prominently displayed.</p>	<p>GPS Smart Drone User Manual: Features, Operation & Safety</p> <p>This comprehensive user manual guides you through the setup, operation, and safety features of the GPS Smart Drone, highlighting its 4K camera, 5G WiFi, GPS capabilities, and intelligent flight modes for an enhanced aerial experience.</p>
 <p>The cover of the LYZRC L900 PRO drone user manual. It features a collage of various drone-related images and text, including '4K', 'GPS', and '5G'.</p>	<p>LYZRC L900 PRO Drone User Manual: 4K Camera, GPS, 5G WiFi</p> <p>Comprehensive user manual for the LYZRC L900 PRO drone. Learn about its 4K HD dual cameras, GPS positioning, 5G WiFi, brushless motors, foldable design, and FPV capabilities.</p>
 <p>The cover of the TEEROK T18S GPS drone user manual. It features a small image of the drone, a QR code, and various regulatory compliance logos (CE, FCC, etc.). The text 'Instruction Manual' and 'AGE: 14+' are visible.</p>	<p>TEEROK T18S GPS Drone: Instruction Manual and User Guide</p> <p>Comprehensive instruction manual for the TEEROK T18S GPS Drone. Learn about product assembly, safety precautions, flight controls, charging, app usage, and troubleshooting.</p>