

OTTOCAST Cabin Care Car Adapter 2026

OTTOCAST Cabin Care Baby Car Camera and Wireless CarPlay Adapter User Manual

Model: Cabin Care Car Adapter 2026

[Product Overview](#) [Compatibility](#) [What's in the Box](#) [Setup](#) [Operating](#)
[Instructions](#) [Maintenance](#) [Troubleshooting](#) [Specifications](#) [Warranty](#) [Support](#)

1. PRODUCT OVERVIEW

The OTTOCAST Cabin Care Baby Car Camera and Wireless CarPlay Adapter provides a solution for monitoring your baby in the back seat directly on your car's factory display. This system integrates baby monitoring with CarPlay functionality, converting wired CarPlay to wireless. It features 1080P clear no-glow night vision, a 150° wide-angle lens, and multiple display modes for enhanced safety and convenience.

Baby in Sight, Drive Alright



Otlocast

Cabin Care

World's **1st** CarPlay + Baby Monitoring
Combo - Split-Screen Navigation & HD
Ultra-Wide View



Image: The OTTOCAST system displaying a split screen, combining CarPlay navigation with a live feed from the baby camera.

Your browser does not support the video tag.

Video: Demonstration of using navigation while simultaneously monitoring your baby with the OTTOCAST system.

2. COMPATIBILITY REQUIREMENTS

Before using the OTTOCAST Cabin Care system, ensure your vehicle and mobile device meet the following

requirements:

- **Vehicle Compatibility:** Your car must be equipped with factory-installed wired CarPlay.
- **Display Type:** Your car's display must be a touchscreen.
- **Mobile Device Compatibility:** Compatible with iPhone devices only (iOS 10 or later, iPhone 6 and above). Android devices are not supported.

1. Only for Cars with Wired CarPlay



2. Supports 99% of iPhone Devices



iOS 10+

iPhone 6+

3. Only for Cars with Touchscreen Displays



Universal Compatibility

World's **1st**
CarPlay + Baby
Monitoring



Image: Visual guide to compatibility requirements, including wired CarPlay, iPhone support, and touchscreen display necessity.

Your browser does not support the video tag.

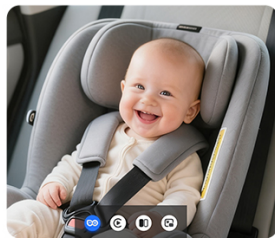
Video: Instructions on how to check if your car has wired CarPlay functionality.

3. WHAT'S IN THE BOX

The package includes the following components:

- Ottocast Wireless CarPlay Adapter (1 unit)
- Ottocast Baby Car Camera (1 unit)
- USB Plug Adapter (USB-A to Type-C) (1 unit)
- 3m Baby Car Camera Power Cable (1 unit)
- Durable Velcro Straps & Snap-On Mount (1 set)

Perfect for Every Family Moment



Newborns



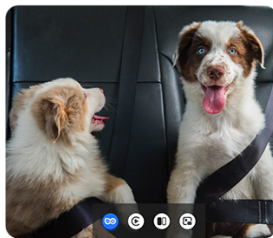
1080P HD



Kids



Night Vision



Pets



Easy to Install



360° Rotation



Plug & Play



Image: An illustration showing all items included in the OTTOCAST Cabin Care product box.

4. SETUP INSTRUCTIONS

Follow these steps to set up your OTTOCAST Cabin Care system:

1. Mount the Camera:

- Attach the baby car camera to a headrest using either the durable velcro straps or the snap-on mount.
- Ensure the camera has a clear, unobstructed view of your baby. The camera rotates 360° for optimal positioning.
- The camera supports both rear-facing and forward-facing child seat orientations.

2. Connect the Wireless CarPlay Adapter:

- Plug the Ottocast wireless CarPlay adapter into your vehicle's USB port that supports wired CarPlay. Use the provided USB-A to Type-C adapter if necessary.

3. Pair with iPhone:

- Turn on Bluetooth and Wi-Fi on your iPhone.
- On your iPhone, search for and pair with the Bluetooth device named "CARR-XXXX" (where XXXX

is a unique identifier).

- Once paired, the CarPlay interface should appear on your car's display, indicating a successful connection.

Simple Mounting

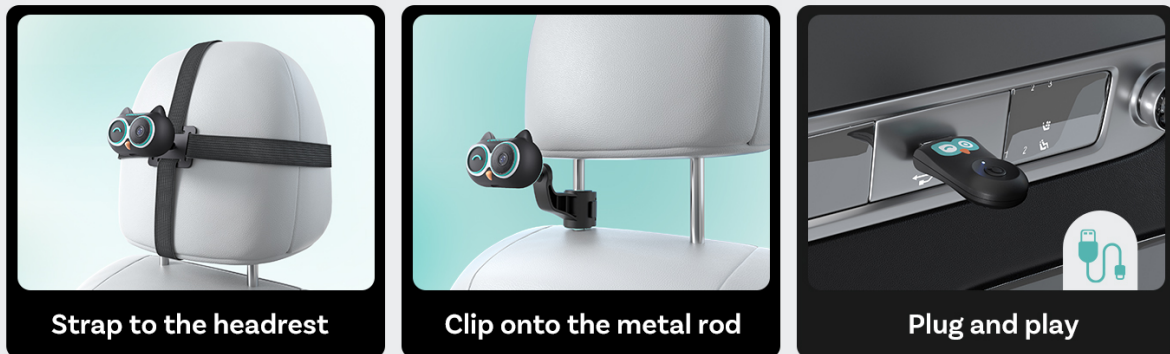


Image: Visual guide for camera mounting options: headrest strap, clip-on mount, and USB adapter connection.

Plug & Play - 10s Setup

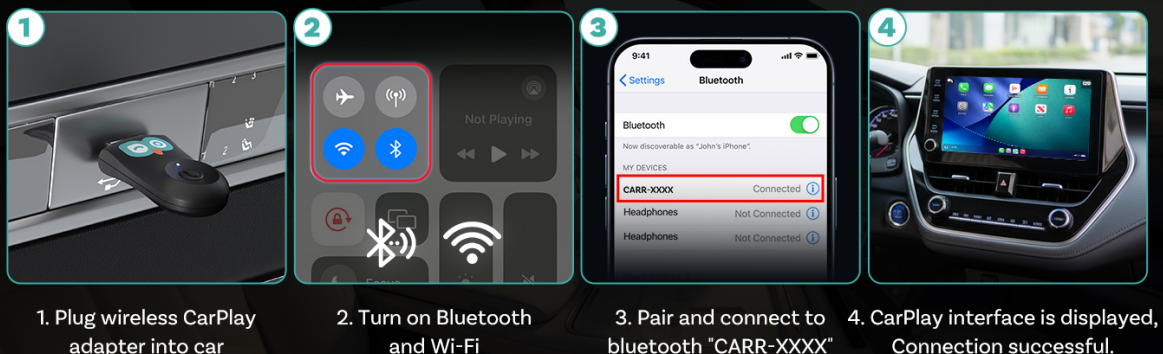


Image: Step-by-step visual instructions for connecting the wireless CarPlay adapter and pairing with an iPhone.

Your browser does not support the video tag.

Video: A guide demonstrating how to connect the Ottocast car baby camera system.

5. OPERATING INSTRUCTIONS

5.1 Display Modes

The system offers four display modes to suit various driving situations:

1. **Split-Screen View:** CarPlay and the baby view each occupy half of the screen.
2. **Full-Screen CarPlay:** Displays only the CarPlay interface.
3. **Full-Screen Baby View:** Displays only the baby camera feed.
4. **Picture-in-Picture (PIP) Mode:** The baby view is displayed as a smaller window with adjustable size and position over the CarPlay interface.

Turn Your Car's Display into a Baby Monitor – 4 Viewing Modes



Image: Illustration of the four available viewing modes for the baby camera and CarPlay on the car's display.

5.2 Night Vision

In low-light conditions, the baby car camera automatically activates its 1080P no-glow night vision mode. This feature provides clear monitoring without emitting bright lights that could disturb your baby's eyes. Advanced infrared technology ensures crisp, detailed images in darkness.

Eye-Safe IR Night Vision



No light disturbance



Image: Comparison demonstrating the no-glow infrared night vision, which prevents light disturbance to the baby.

See Clearly Even in Darkness

1080P



Image: A driver monitoring a baby in the back seat using the 1080P night vision feature on the car's display during nighttime driving.

5.3 Car Controls Integration

The system is designed to integrate seamlessly with your car's original controls, including touchscreen, knob control, and steering wheel controls, for a consistent driving experience.

Keep Original Car Controls

One seamless driving experience



Image: The system supports interaction via the car's original touchscreen, control knob, and steering wheel buttons.

Your browser does not support the video tag.

Video: A demonstration of how the car's display can be used as a baby monitor.

6. MAINTENANCE

To ensure optimal performance and longevity of your OTTOCAST Cabin Care system, follow these

maintenance guidelines:

- **Cleaning:** Use a soft, dry cloth to clean the camera lens and adapter. Avoid abrasive cleaners or solvents.
- **Cable Management:** Ensure all cables are securely routed and not pinched or exposed to excessive wear.
- **Storage:** If storing the device for an extended period, disconnect it from the car's USB port and store it in a cool, dry place.
- **Firmware Updates:** Check the official OTTOCAST website periodically for any available firmware updates for the wireless CarPlay adapter to ensure the best performance and compatibility.

7. TROUBLESHOOTING

If you encounter issues with your OTTOCAST Cabin Care system, refer to the following common problems and solutions:

Problem	Possible Cause	Solution
Device Overheating / Disconnecting	Prolonged use or poor ventilation can cause the adapter to overheat.	<ul style="list-style-type: none">• Ensure the adapter is not covered or in an enclosed space.• Disconnect the adapter for a few minutes to allow it to cool down.• If the issue persists, contact customer support.
Connection Instability / No Connection	<ul style="list-style-type: none">• Incorrect connection sequence.• Bluetooth/Wi-Fi issues on iPhone.• CarPlay system not fully booted.	<ul style="list-style-type: none">• Ensure the car's infotainment system is fully booted before plugging in the adapter.• Unplug and re-plug the adapter.• Restart your iPhone's Bluetooth and Wi-Fi, then re-pair.• Check iPhone settings: Settings > General > CarPlay.
Laggy Video Feed	Network interference or system processing delay.	<ul style="list-style-type: none">• Ensure no other devices are heavily using the car's Wi-Fi or Bluetooth.• Restart the adapter and your iPhone.
Icons appear too small on screen	Display scaling issue with the CarPlay interface.	<ul style="list-style-type: none">• Check your car's display settings for any scaling or resolution options.• Ensure your iPhone's display settings are optimized for CarPlay.

8. SPECIFICATIONS

Feature	Detail
Brand	OTTOCAST
Model	Cabin Care Car Adapter 2026
Connectivity Technology	USB, Wi-Fi
Video Capture Resolution	1080p
Field Of View	150 Degrees (Real Angle of View)
Control Method	Touch
Item Weight	1.8 Ounces
Optical Sensor Technology	CMOS
Compatible Devices	iPhone (iOS 10+), Cars with Wired CarPlay and Touchscreen Displays
Power Source	USB (No Batteries Included)

9. WARRANTY INFORMATION

The OTTOCAST Cabin Care Baby Car Camera and Wireless CarPlay Adapter comes with a comprehensive **2-year manufacturer's warranty**. This warranty covers defects in materials and workmanship under normal use. Please retain your proof of purchase for warranty claims.

10. CUSTOMER SUPPORT

For technical assistance, warranty claims, or any other inquiries, please contact OTTOCAST customer service:

Phone: +1 7179358636

Email: service@ottocast.com

Availability: Monday - Friday, 9 AM - 6 PM (PST)

OTTOCAST offers lifetime professional technical support with guaranteed responses within 24 hours.



Image: OTTOCAST brand logo.