

[Manuals.plus](#) /

› [AGARO](#) /

› AGARO Regent High Pressure Washer Instruction Manual

AGARO 34415

AGARO Regent High Pressure Washer Instruction Manual

Model: 34415

1. INTRODUCTION

This manual provides essential information for the safe and efficient operation, maintenance, and troubleshooting of your AGARO Regent High Pressure Washer. Please read these instructions carefully before using the appliance and retain them for future reference.

The AGARO Regent High Pressure Washer is designed for effective cleaning of various surfaces, including vehicles, walkways, and outdoor furniture. It features a 1600W motor, delivering up to 120 Bar pressure and a 5.5 L/min flow rate.



Image: AGARO Regent High Pressure Washer, showcasing the main unit, spray gun, and hose.

2. SAFETY INFORMATION

Always observe basic safety precautions when using electrical appliances to reduce the risk of fire, electric shock, and personal injury.

- **Electrical Safety:** Ensure the power source matches the appliance's requirements. Do not operate with damaged cords or plugs.
- **Water Pressure:** Never direct the water jet at people, animals, electrical equipment, or the appliance itself. High pressure can cause injury.
- **Stability:** Operate the pressure washer on a stable, level surface to prevent tipping.
- **Ventilation:** Ensure adequate ventilation during operation.
- **Oil Change:** Change oil after approximately 150-200 hours of operation.
- **Overheating Prevention:** Allow the unit to rest for 15-20 minutes after continuous use to prevent overheating.
- **Domestic Use:** This appliance is intended for domestic use only.

AGARO

Regent High Pressure Washer

**Powerful &
Strong Cleaning**



Image: Product accessories and important caution notes, including oil change and overheating prevention.

3. PRODUCT COMPONENTS AND ACCESSORIES

Your AGARO Regent High Pressure Washer comes with the following components:

- Main Pressure Washer Unit
- 3M Inlet Hose
- 8M Outlet Hose
- Foam Bottle
- Inlet Connector
- Extension Rod
- Spray Gun & Nozzle
- Tap Connector
- Inlet Filter
- Bucket Filter
- Rotating Nozzle

AGARO

Regent High Pressure Washer

**Powerful &
Strong Cleaning**



Image: Visual representation of the 10 product accessories, including hoses, connectors, foam bottle, and nozzles.

4. SETUP AND INSTALLATION

Follow these steps to correctly set up your pressure washer:

1. **Connect Inlet Pipe:** Attach the 3M inlet hose to the tap connector. If drawing water from a bucket, connect the bucket filter to the inlet hose.
2. **Attach Inlet Connector:** Connect the inlet pipe to the inlet connector.
3. **Screw Inlet Filter:** Screw the inlet filter onto the main pressure washer unit.
4. **Attach Inlet Connector to Filter:** Securely attach the inlet connector to the inlet filter on the main unit.
5. **Connect Outlet Hose:** Push and screw the 8M outlet hose pipe with the outlet connector onto the main unit.
6. **Release Air:** Turn ON the machine without connecting the spray gun to the outlet hose. Allow water to flow through to release any trapped air.
7. **Attach Outlet Hose to Spray Gun:** Connect the outlet hose pipe to the spray gun.
8. **Connect Extension Rod:** Connect the spray gun extension rod to the spray gun.
9. **Attach Nozzle:** Attach any desired nozzle (e.g., rotating nozzle) to the spray gun extension rod.

Important: Ensure all connections are secure to prevent leaks. A correct water inlet quick connection method ensures no gap in the middle.

Adjustable nozzle



Image: Detailed installation steps for the pressure washer, showing hose and filter connections.

5. OPERATING INSTRUCTIONS

5.1 General Operation

- Ensure the water supply is connected and turned on.
- Plug the power cord into a suitable electrical outlet.
- Turn on the pressure washer using the power switch.
- Press the trigger on the spray gun to begin spraying.
- Release the trigger to stop the water flow. The motor will temporarily shut off and restart when the trigger is pressed again (Total Stop System).

5.2 Adjustable Spray Nozzle

The spray gun features an adjustable nozzle to control the water pressure and spray pattern.

- **Low Speed:** For gentle cleaning or applying detergent.
- **Medium Speed:** For general cleaning tasks.
- **High Speed:** For stubborn dirt and tough stains.

To adjust, twist the nozzle on the extension rod from low to high pressure settings.

High-Pressure Cleaning

For quick and easy removal
of stubborn dirt & oil



1600 Watts



120 Bars Pressure



5.5 L/Min Water Flow Rate

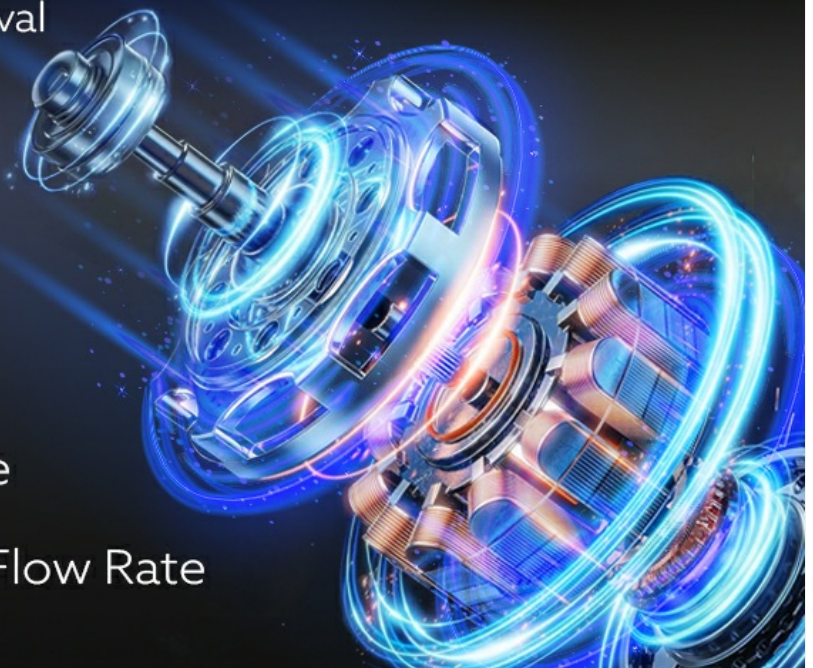


Image: Adjustable spray nozzle settings and foam bottle operation.

5.3 Using the Foam Bottle

The included 350 ml foam bottle allows for easy application of cleaning detergents.

- Fill the foam bottle with appropriate pressure washer detergent.
- Push the foam bottle onto the spray gun to attach it.
- Spray to apply foam.
- Raise the foam bottle to release it from the spray gun.

Note: For optimal foam generation, consider using detergents specifically designed for pressure washers. Some users may find a separate foam lance attachment provides thicker foam.

How to install



1. Attach inlet pipe to tap connector.

or
Connect bucket filter if needed.



2. Attach inlet pipe to inlet connector.



3. Screw inlet filter onto main unit.



4. Attach inlet connector to inlet filter.



5. Push and screw the outlet hose pipe with the outlet connector.



6. Turn ON machine without connecting hose pipe to gun to release air.



7. Attach outlet hose pipe to spray gun.



8. Connect spray gun extension rod to spray gun.



9. Attach any nozzle to spray gun extension rod.



Correct: Water inlet quick connection link method



Wrong: There is a gap in the middle

Image: Demonstrating car washing with the pressure washer.

Car Wash Made Effortless



Image: Demonstrating motorcycle cleaning with the pressure washer.

Blast Mud Off in Seconds



Image: Demonstrating patio cleaning with the pressure washer.

6. MAINTENANCE

Regular maintenance ensures the longevity and optimal performance of your pressure washer.

- **Oil Change:** Change the motor oil after every 150-200 hours of operation. Refer to the oil cap or manufacturer's guidelines for oil type.
- **Filter Cleaning:** Regularly inspect and clean the inlet filter and bucket filter to prevent blockages and ensure consistent water flow.
- **Nozzle Cleaning:** If the nozzle becomes clogged, use a small pin or wire to clear any debris.
- **Hose Inspection:** Check hoses for any signs of wear, cracks, or damage before each use. Replace damaged hoses immediately.
- **Storage:** Before storing, drain all water from the pump and hoses to prevent freezing damage in cold climates. Store the unit in a dry, protected area.

7. TROUBLESHOOTING

Problem	Possible Cause	Solution
No power	Power cord unplugged, circuit breaker tripped, faulty switch.	Check power connection, reset circuit breaker, contact service if switch is faulty.
Low pressure	Insufficient water supply, clogged nozzle, air in pump, kinked hose.	Ensure adequate water flow, clean nozzle, bleed air from pump (run without gun), straighten hose.
Motor runs continuously (without trigger pressed) or excessive noise/vibration	Air in the pump system, faulty unloader valve.	Disconnect outlet pipe and run machine with only inlet to clear airlock. If problem persists, contact customer support.
Water leaks	Loose connections, damaged O-rings or seals.	Tighten all connections, inspect and replace damaged O-rings/seals.
Foam bottle not producing thick foam	Incorrect detergent, diluted solution, clogged foam nozzle.	Use pressure washer specific detergent, ensure correct concentration, clean foam nozzle. Consider a separate foam lance for better results.

8. SPECIFICATIONS

Feature	Detail
Brand	AGARO
Model Number	34415
Power Source	Corded Electric
Power Input	1600W
Maximum Pressure	120 Bar (1740 PSI)
Maximum Flow Rate	5.5 Liters Per Minute
Hose Length (Outlet)	8 Metres
Item Weight	4650 Grams
Product Dimensions (L x W x H)	23L x 13W x 24H Centimeters
Net Quantity	1 Count

Multipurpose use

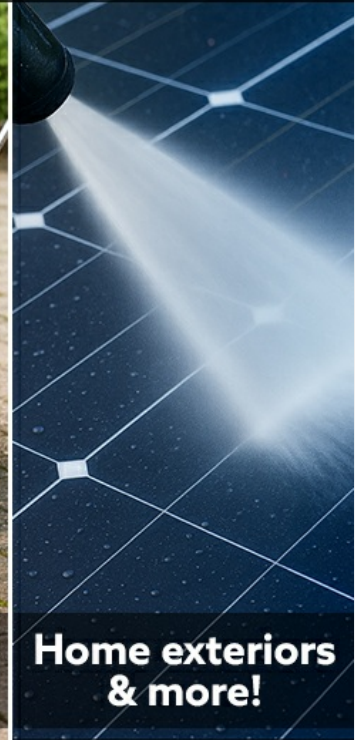


Image: Key features and specifications of the pressure washer.

Dimension



Image: Physical dimensions of the AGARO Regent High Pressure Washer.

9. WARRANTY AND SUPPORT

Your AGARO Regent High Pressure Washer is backed by a manufacturer's warranty. For specific warranty terms and conditions, please refer to the documentation included with your product or contact AGARO customer support.

Extended Warranty: An optional 1-year extended warranty by Onsitego is available for purchase.

For technical assistance, service requests, or warranty claims, please contact:

- **Manufacturer:** Universal Corporation Limited, GuangZhou City, China
- **Importer:** Universal Corporation Limited, 4/1 Middleton street, Sikkim Commerce house, Kolkata-71

Customer reviews indicate positive experiences with AGARO's after-sales service and support.



