

iHome HSTW-18

iHome Luxury 20L Towel Warmer Instruction Manual

MODEL: HSTW-18



1. Introduction

Thank you for choosing the iHome Luxury 20L Towel Warmer. This appliance is designed to provide warm towels, blankets, or robes, enhancing your comfort and relaxation. Please read this manual thoroughly before use to ensure safe and optimal operation. Keep this manual for future reference.

iHome



Image 1.1: A user enjoying the iHome Towel Warmer in a bathroom setting.

2. Safety Information

WARNING: To reduce the risk of fire, electric shock, or injury, always follow basic safety precautions when using electrical appliances.

- Read all instructions before using the appliance.
- Do not immerse the appliance, cord, or plug in water or other liquids.
- Close supervision is necessary when any appliance is used by or near children. The unit includes a child safety lock.
- Unplug from outlet when not in use and before cleaning. Allow to cool before putting on or taking off parts.
- Do not operate any appliance with a damaged cord or plug, or after the appliance malfunctions or has been damaged in any manner.
- Do not use outdoors. This appliance is for indoor household use only.
- Do not let the cord hang over the edge of a table or counter, or touch hot surfaces.

- Do not place on or near a hot gas or electric burner, or in a heated oven.
- Always attach plug to appliance first, then plug cord into the wall outlet. To disconnect, turn any control to 'off', then remove plug from wall outlet.
- Use this appliance only for its intended use as described in this manual.
- The appliance is equipped with overheat protection for enhanced safety.



Image 2.1: Overview of the iHome Towel Warmer's advanced safety features.

3. Product Overview

The iHome Luxury 20L Towel Warmer is designed for convenience and comfort, featuring a generous capacity and user-friendly controls.

Key Features:

- **Fast Heating:** Warms towels evenly within minutes.
- **Aromatherapy Scent Pod:** Infuses towels with a gentle fragrance (fragrance pads sold separately).

- **Adjustable Temperature:** Customize heat levels with an LED display.
- **Child Safety Lock:** Prevents accidental operation.
- **Timer & Auto Shut-off:** Four customizable timer options (5, 15, 45, 60 minutes) and automatic shut-off for safety and energy conservation.
- **Large Capacity:** 20L capacity fits two large bath towels, robes, or small blankets.



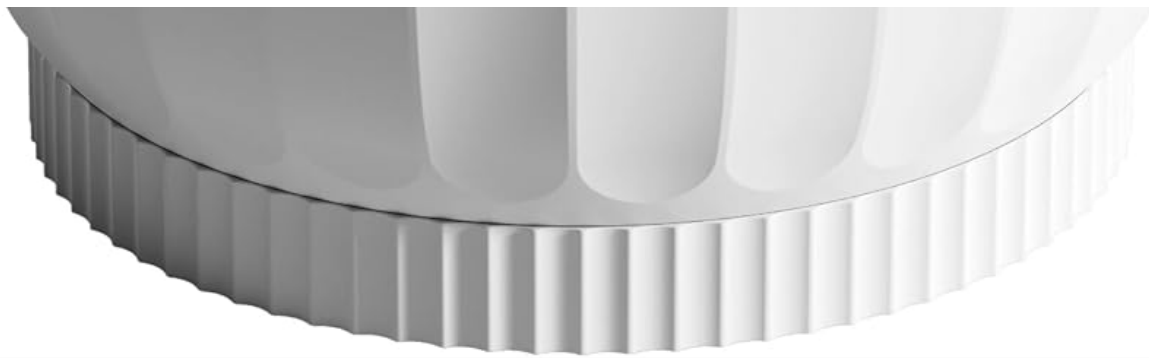


Image 3.1: The iHome Luxury 20L Towel Warmer.



iHome

Towel Warmer

Warm and Luxurious

Wrap Yourself in Comfort After Every Shower.



4 timer option



Child safe lock



LED Display



Auto shut off



Fast heating



160°F Max



Even heating



Aromatherapy

Image 3.2: Key features of the iHome Towel Warmer.

Components:

- Towel Warmer Unit
- Detachable Lid with Handle

- Inner Fragrance Pad Holder
- Power Cord

4. Setup

1. **Unpacking:** Carefully remove the towel warmer from its packaging. Retain packaging for future storage or transport.
2. **Placement:** Place the towel warmer on a flat, stable, heat-resistant surface away from water sources. Ensure adequate clearance around the unit for ventilation.
3. **Power Connection:** Plug the power cord into a standard electrical outlet. The unit is designed for plug-and-play operation.



Image 4.1: Proper placement of the towel warmer on a stable surface.

5. Operating Instructions

5.1 Loading Items

1. Open the detachable lid.
2. Place dry towels, robes, or blankets inside the warmer. The 20L capacity can accommodate up to two oversized bath towels. Do not overload the unit.
3. Close the lid securely.

iHome

Effortless One-Touch Operation.

User-Friendly Design

Designed for Everyday Ease

No setup required – plug in and enjoy instant warmth.



Image 5.1: Loading towels and operating the one-touch control.

5.2 Powering On and Setting Timer

1. **Power On:** Short press the power button to turn the unit on. The LED display will illuminate.
2. **Set Timer:** Press the timer button to cycle through the available warming durations: 5, 15, 45, and 60 minutes. Select your desired time.
3. The unit will begin heating automatically after a timer is selected.

5.3 Aromatherapy Function

1. Locate the inner fragrance pad holder inside the lid.

2. Insert a fragrance pad (sold separately) into the holder.
3. Close the lid. The heat will gently diffuse the fragrance into your towels.



Image 5.2: Using the aromatherapy scent pod.

5.4 Auto Shut-off

The towel warmer will automatically turn off once the selected warming cycle is complete. This feature prevents overheating and conserves energy.

5.5 Heating Technology



Image 5.3: Explanation of the towel warmer's heating technology.

5.6 Product Video

Your browser does not support the video tag.

Video 5.1: Official product video demonstrating the features and use of the iHome Luxury 20L Towel Warmer. This video highlights its fast heating, generous capacity, aromatherapy function, and user-friendly design.

6. Maintenance

6.1 Cleaning

1. Always unplug the unit and allow it to cool completely before cleaning.
2. Wipe the exterior with a soft, damp cloth. Do not use abrasive cleaners or harsh chemicals.
3. The interior can be wiped with a damp cloth. Ensure no water enters the electrical components.
4. Do not immerse the unit in water.

6.2 Storage

When not in use, store the towel warmer in a cool, dry place. Ensure the unit is clean and dry before storing.

7. Troubleshooting

Problem	Possible Cause	Solution
Unit does not turn on.	Not plugged in; power outlet malfunction; unit malfunction.	Ensure the power cord is securely plugged into a working outlet. Test the outlet with another appliance. If the issue persists, contact customer support.
Towels are not warm enough.	Insufficient warming time; unit overloaded; lid not closed properly.	Increase the warming time. Reduce the number of items inside. Ensure the lid is securely closed.
Unit emits unusual odor.	New unit odor; foreign object inside; overheating.	Initial use may produce a slight odor, which should dissipate. Unplug and inspect for foreign objects. If the odor is strong or persistent, discontinue use and contact support.
LED display not working.	Electrical issue; unit malfunction.	Unplug the unit for a few minutes and plug it back in. If the display remains off, contact customer support.

8. Specifications

- **Model Number:** HSTW-18
- **Capacity:** 20 Liters
- **Power:** 400 W (as per product description)
- **Max Temperature:** Up to 160°F (as per product images)
- **Timer Settings:** 5, 15, 45, 60 minutes
- **Dimensions (Approx.):** 13 inches (Diameter) x 19 inches (Height) (as per product images)
- **Item Weight:** 9 pounds
- **Manufacturer:** iHome

iHome

Spa-grade full size **Stands 19" Tall**

20L Capacity

Ideal for families or couples

13 in.



19 in.

Suitable for:



Blankets



Robes



Towels



Pajamas

Image 8.1: Dimensions and capacity of the iHome Towel Warmer.






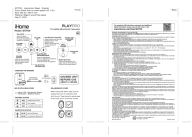
9. Warranty and Support

iHome products are manufactured to the highest quality standards. For specific warranty information and customer support, please refer to the warranty card included with your purchase or visit the official iHome website. Please have your model number (HSTW-18) and purchase date available when contacting support.

Online Support: www.ihome.com/support (Example link, actual link may vary)



Related Documents - HSTW-18

	<p>iHome POWERPAD 2IHQ1052 Qi Wireless Charging Pad User Guide</p> <p>Official guide for the iHome POWERPAD 2IHQ1052 Qi-enabled wireless charging pad. Features include 15W fast charging, ultra-slim design, compatibility with iPhone, AirPods, and Android devices. Includes troubleshooting and FCC compliance information.</p>
	<p>iHome iAVS16 Smart Speaker User Manual and Guide</p> <p>Comprehensive user manual for the iHome iAVS16 Bluetooth Stereo Speaker with Alexa integration. Learn about setup, controls, features, troubleshooting, and safety information.</p>
	<p>iHome iA5 App-Enhanced Alarm Clock Instruction Manual</p> <p>Comprehensive instruction manual for the iHome iA5 app-enhanced alarm clock, covering setup, operation, safety, troubleshooting, and warranty information for iPhone and iPod. Learn how to dock your device, set the clock and alarm, use the sleep timer, and connect external audio.</p>
	<p>iHome iBT920 Quick Start Guide: Color Changing Splash Resistant Boombox</p> <p>Get started with your iHome iBT920 Color Changing Splash Resistant Boombox. This guide covers setup, controls, Bluetooth pairing, wireless stereo, safety instructions, disposal, FCC/ISED compliance, and warranty information.</p>
	<p>iHome+Sleep and iA5 Start Guide: Features, Setup, and FAQ</p> <p>Comprehensive start guide for the iHome+Sleep app and iA5 device, covering setup, features like alarms, sleep tracking, social media integration, and frequently asked questions.</p>
	<p>iHome iBT700 PLAYPRO Portable Bluetooth Speaker User Guide</p> <p>Concise guide for the iHome iBT700 PLAYPRO Portable Bluetooth Speaker, covering controls, charging, battery status, Bluetooth pairing, and safety instructions.</p>